

Complex Problems

- I need a rack that can measure up to my specifications *and* budget.
- Simplicity is important, I need racks with logical and descriptive part numbers
- I have to reduce vendors – Are there any suppliers that also offer high quality racks and cabinets?

Atlas Solutions

Equipment Rack Solutions from Atlas Sound

- Seven primary families of vertical racks, including floor standing and wall mount each with exceptional strength and versatility fit any requirement and budget.
- Straightforward and explanatory part numbers that identify rack series, RU height, and depth.
- Atlas Sound is your true full line supplier! Our robust and cost effective racks can be combined with other Atlas solutions to qualify for the industry's most aggressive free freight program.



244-25



744-36



Ask your Atlas Representative for details and discover how the simple solution is the Atlas Solution!



FMA Series

- Available in the Most Popular Heights & Depths
- Designed With Contractor Input to Meet Storage and Wire Management Needs for Today and Into the Future
- Rear Door Included as Standard Equipment
- 14-gauge Tops / Bottoms / Frames
- 16-gauge Side Panels
- Hat Sections are Completely Redesigned With Rail Slot and Retainer Hole for Extra Strength
- Return Added for "Stop" For Flush Mount Doors
- Two Pairs of 12-gauge CRS Adjustable Mounting Rails Plated, Drilled and Tapped 10-32 With Hash Marks to Indicate Rack Unit Increments
- Slots in Rack Rails for Cable Pass-Through and Front Door Hinge Access (Surface Mount Doors)
- Leg Levelers Included as Standard Equipment
- Holes for Optional Surface Doors are Pre-Drilled & Plugged
- Hat Sections Sized to Facilitate Standard 19" Panels -Handy for Mounting "Stick-On" Modules and Other Hardware
- Slots Maintained in Hat Sections for Wire Management
- Knock Outs on Removable Standard 2 RU Panels (Rear of Cabinet Top & Bottom) Panel Includes $\frac{3}{8}$ " KOs for BNC Connectors (Perfect for Diversity Wireless Systems)
- Increased Vent Space on Top Sections
- Stocked in Scratch Resistant Textured Black (-962)
- Wide Selection of Convenience, Cooling and Electronic Accessories are Available
- 2 RU Panel on Bottom for Cable Pass-Through Between Cabinets
- UL Listed (UL 1678)

G Series (Ganging) Specific Features *(In Addition to Above)*

- Lift-off, Locking Side Panels – "Swing-Out" Design Facilitates Easy Service Access
- Reinforced Stiffeners On All Side Panels
- Holes For Ganging Hardware Pass Through (Joins Racks)



FMA44-25SA
*(Shown with
Optional Front Door & Side Panels)*



The Atlas Racks FMA (Folded Metal Assembly) design incorporates an innovative "Radius" look characterized by sleek corners and seamless joints. This look blends effortlessly in today's ergonomically designed office environment. A wider footprint of over 24" offers installers the luxury of more available working space, particularly valuable in wire management applications where space is often inherently limited.

For optimum wire management, unique, removable 2 RU high panels are positioned behind cutouts at the top & bottom on the rear of the cabinet. These panels include a variety of knockouts ranging in size from $\frac{3}{8}$ " to $1\frac{1}{8}$ " to facilitate rigid or flexible conduit. $\frac{3}{8}$ " knockouts (x2) are also included on this panel to allow installation of BNC connectors commonly used for diversity wireless microphone systems. The cabinet top sections offer large, vent openings for maximum ventilation. This comes in especially handy when thermal sensitive amplifiers and/or digital rack mount equipment are mounted in an FMA cabinet.

Leg levelers are included with the FMA Series at no additional cost to provide alignment regardless of floor evenness but in instances where maneuverability of the cabinet is required, an optional caster kit allows easy positioning without significantly increasing the cabinet's overall height.

Cabinets include two pair (front / back) 11-gauge plated steel rack rails tapped 10-32 and include the new Atlas Sound RU indicators to aid in aligning equipment during installation. Threaded inserts are included on the front of the cabinet to save installation time when a front door is required.

Optional FMA series side panels "swing-out" for easy serviceability of equipment housed in the cabinet while maintaining security. These heavily reinforced side panels install easily on unique "lift-off" hinge assemblies. All mounting holes and cabinet hardware is provided to join multiple FMA G series cabinets.

All units feature 14-gauge steel tops / bottoms and frames. A flush mount 16-gauge steel rear door with integral "stop" to prevent over-travel is included as standard.

700 Series

The 700 Series from Atlas are sturdy, open racks for enhanced wire management and multi-bay configuration; the series is available in 25 ½", 30", & 36" depths and 35, 40, and 44 RU heights. The 14-gauge CRS welded frame provides superior construction and peace of mind when requiring a durable rack for housing costly electronic equipment. The 700s are UL Listed (UL 1678) and seismic certified, in accordance to the Telcordia NEBS (Network Equipment Building Systems) GR-63-CORE standard. When the SBK700 brackets are properly installed, the racks are able to withstand up to a zone 4 earthquake which is comparable to Richter magnitude 8.0.

Common features for all 700 models include:

- Choice of 25½", 30" or 36" Depths
- Welded, 14-gauge CRS Frame With Vented Top Panel, Base and Rear Door
- Optional, Locking Rear Door with Spring Hinges, Flush Lock and Pull, and Right or Left-Hand Hinging Option
- Optional Surface-Mount Front Door in Choice of Solid Steel, Perforated, or Plexiglas® (Right or Left-Hand Hinging)
- Easily Adjustable, 12-gauge, Front-to-Rear Tapped Mounting Rails
- Slotted Mounting Rail Supports are E.I.A. Spaced for Vertical Mounting of 19" Accessories
- Increased Panel Space Opening in Top and Bottom Provides Multiple Panel Options and Wire / Cable Access
- UL Listed (Standard 1678)



Seismic Certified
GR-63-CORE

744-25



500 Series:

The 500 Series from Atlas are designed with open sides for easy wiring access in single or multi-bay configurations. The series offers sturdy construction, quality wire management, ventilation, and styling. The 16-gauge welded racks are available in 25½" and 30" depths and 35, 40, and 44 RU heights. The 500 Series includes one pair of 12-gauge CRS adjustable mounting rails tapped 10-32; 30" depth series includes two pair of rails.

Common features for all 500 models include:

- Choice of 25½" or 30" Depths
- Welded, 16-gauge CRS Frame With Vented Top Panel, Base and Rear Door
- Removable, Locking Rear Door with Spring Hinges, Flush Lock and Pull, and Right or Left-Hand Hinging Option
- Optional Surface-Mount Front Door in Choice of Solid Steel, Perforated, or Plexiglas® (Right or Left-Hand Hinging)
- Easily Adjustable, 12-gauge, Front-to-Rear Tapped Mounting Rails
- Slotted Mounting Rail Supports Facilitate Vertical Wire Management and are E.I.A.-Spaced for Vertical Mounting of 19" Accessories
- Panel Space Opening in Top and Bottom Provides Ample Wire/Cable Access
- 18 Conduit Knockouts (Standard & Concentric)
- UL Listed (Standard 1678)



544-30





Model	Front Doors				Side Panels	Rear Doors
	Plexiglas Front Doors	Metal "Micro-Perf" Front Doors - 1" Deep	Metal "Micro-Perf" Front Doors - 3" Deep	Solid Metal Front Door		
FMA Series						
FMA35-25G	PFD35	MPFD35	MPFD35-3	SFD35	FMA35-25LRPV	Included
FMA44-25G	PFD44	MPFD44	MPFD44-3	SFD44	FMA44-25LRPV	Included
FMA44-36G	PFD44	MPFD44	MPFD44-3	SFD44	FMA44-36LRPV	Included
FMA35-25SA	PFD35	MPFD35	MPFD35-3	SFD35	FMA35-25LRPV	Included
FMA44-25SA	PFD44	MPFD44	MPFD44-3	SFD44	FMA44-25LRPV	Included
700 Series						
744-25	PFD44	MPFD44	MPFD44-3	SFD44	SPS44-25	FRD44
744-30	PFD44	MPFD44	MPFD44-3	SFD44	SPS44-30	FRD44
744-36	PFD44	MPFD44	MPFD44-3	SFD44	SPS44-36	FRD44
740-25	PFD40	MPFD40	MPFD40-3	SFD40	SPS40-25	FRD40
735-25	PFD35	MPFD35	MPFD35-3	SFD35	SPS35-25	FRD35
500 Series						
544-25	PFD44	MPFD44	MPFD44-3	SFD44	SPS44-25	Included
544-30	PFD44	MPFD44	MPFD44-3	SFD44	SPS44-30	Included
540-25	PFD40	MPFD40	MPFD40-3	SFD40	SPS40-25	Included
535-25	PFD35	MPFD35	MPFD35-3	SFD35	SPS35-25	Included
200 Series						
244-18	PFD44	MPFD44	MPFD44-3	SFD44	Included	Included
244-25	PFD44	MPFD44	MPFD44-3	SFD44	Included	Included
244-30	PFD44	MPFD44	MPFD44-3	SFD44	Included	Included
240-18	PFD40	MPFD40	MPFD40-3	SFD40	Included	Included
240-25	PFD40	MPFD40	MPFD40-3	SFD40	Included	Included
240-30	PFD40	MPFD40	MPFD40-3	SFD40	Included	Included
235-18	PFD35	MPFD35	MPFD35-3	SFD35	Included	Included
235-25	PFD35	MPFD35	MPFD35-3	SFD35	Included	Included
235-30	PFD35	MPFD35	MPFD35-3	SFD35	Included	Included
224-18	PFD24	MPFD24	MPFD24-3	SFD24	Included	Included
224-25	PFD24	MPFD24	MPFD24-3	SFD24	Included	Included
224-30	PFD24	MPFD24	MPFD24-3	SFD24	Included	Included
221-18	PFD21	MPFD21	MPFD21-3	SFD21	Included	Included
221-25	PFD21	MPFD21	MPFD21-3	SFD21	Included	Included
221-30	PFD21	MPFD21	MPFD21-3	SFD21	Included	Included
100 Series						
144-18	PFD44	MPFD44	MPFD44-3	SFD44	Included	Included
140-18	PFD40	MPFD40	MPFD40-3	SFD40	Included	Included
135-18	PFD35	MPFD35	MPFD35-3	SFD35	Included	Included
124-18	PFD24	MPFD24	MPFD24-3	SFD24	Included	Included
121-18	PFD21	MPFD21	MPFD21-3	SFD21	Included	Included
WMA Series						
WMA10-23	PFD10	MPFD10	MPFD10-3	SFD10	Included	Included
WMA12-23	PFD12	MPFD12	MPFD12-3	SFD12	Included	Included
WMA16-23	PFD16	MPFD16	MPFD16-3	SFD16	Included	Included
WMA24-23	PFD24	MPFD24	MPFD24-3	SFD24	Included	Included
WMA35-23	PFD35	MPFD35	MPFD35-3	SFD35	Included	Included
300 Series						
307-12	—	—	—	—	Included	Included
310-12	—	—	—	—	Included	Included
312-12	—	—	—	—	Included	Included
316-12	—	—	—	—	Included	Included
324-12	—	—	—	—	Included	Included
310-15	—	—	—	—	Included	Included
312-15	—	—	—	—	Included	Included
316-15	—	—	—	—	Included	Included
324-15	—	—	—	—	Included	Included
335-15	—	—	—	—	Included	Included

Top Panels			Extra Rear Rails	Caster Kit	Roller Truck	Leg Levelers	Bus Bars
Solid	Perforated	Fan					
FMA Series							
TPS-25	TPP-25	EFT-25	FMA-RRK35	FMARTK25	—	Included	BBG35
TPS-25	TPP-25	EFT-25	FMA-RRK44	FMARTK25	—	Included	BBG44
TPS-30	TPP-36	EFT-36	FMA-RRK44	FMARTK36	—	Included	BBG44
TPS-25	TPP-25	EFT-25	FMA-RRK35	FMARTK25	—	Included	BBG35
TPS-25	TPP-25	EFT-25	FMA-RRK44	FMARTK25	—	Included	BBG44
700 Series							
TPS-25	TPP-25	EFT-25	Included	RCK-700	—	Included	BBG44
TPS-30	TPP-30	EFT-30	Included	RCK-700	—	Included	BBG44
TPS-36	TPP-36	EFT-36	Included	RCK-700	—	Included	BBG44
TPS-25	TPP-25	EFT-25	Included	RCK-700	—	Included	BBG40
TPS-25	TPP-25	EFT-25	Included	RCK-700	—	Included	BBG35
500 Series							
SPR6	PPR6	EFT6-4	RR44	RCK-25	—	Included	BBG44
SPR6	PPR6	EFT6-4	Included	RCK-30	—	Included	BBG44
SPR6	PPR6	EFT6-4	RR40	RCK-25	—	Included	BBG40
SPR6	PPR6	EFT6-4	RR35	RCK-25	—	Included	BBG35
200 Series							
SPR6	PPR6	EFT6-4	RR44	RCK-18	CT1020-962	—	BBG44
SPR6	PPR6	EFT6-4	RR44	RCK-25	—	—	BBG44
SPR6	PPR6	EFT6-4	RR44	RCK-30	—	—	BBG44
SPR6	PPR6	EFT6-4	RR40	RCK-18	CT1020-962	—	BBG40
SPR6	PPR6	EFT6-4	RR40	RCK-25	—	—	BBG40
SPR6	PPR6	EFT6-4	RR40	RCK-30	—	—	BBG40
SPR6	PPR6	EFT6-4	RR35	RCK-18	CT1020-962	—	BBG35
SPR6	PPR6	EFT6-4	RR35	RCK-25	—	—	BBG35
SPR6	PPR6	EFT6-4	RR35	RCK-30	—	—	BBG35
SPR6	PPR6	EFT6-4	RR24	RCK-18	CT1020-962	—	BBG24
SPR6	PPR6	EFT6-4	RR24	RCK-25	—	—	BBG24
SPR6	PPR6	EFT6-4	RR24	RCK-30	—	—	BBG24
SPR6	PPR6	EFT6-4	RR21	RCK-18	CT1020-962	—	BBG21
SPR6	PPR6	EFT6-4	RR21	RCK-25	—	—	BBG21
SPR6	PPR6	EFT6-4	RR21	RCK-30	—	—	BBG21
100 Series							
SPR6	PPR6	EFT6-4	—	RCK-18	CT1020-962	—	BBG44
SPR6	PPR6	EFT6-4	—	RCK-18	CT1020-962	—	BBG40
SPR6	PPR6	EFT6-4	—	RCK-18	CT1020-962	—	BBG35
SPR6	PPR6	EFT6-4	—	RCK-18	CT1020-962	—	BBG24
SPR6	PPR6	EFT6-4	—	RCK-18	CT1020-962	—	BBG21
WMA Series							
SPR3	PPR3	EFP3-1, EFP3-2	WMA-RR10	—	—	—	—
SPR3	PPR3	EFP3-1, EFP3-2	WMA-RR12	—	—	—	—
SPR3	PPR3	EFP3-1, EFP3-2	WMA-RR16	—	—	—	—
SPR3	PPR3	EFP3-1, EFP3-2	WMA-RR24	—	—	—	—
SPR3	PPR3	EFP3-1, EFP3-2	WMA-RR35	—	—	—	—
300 Series							
—	—	—	—	CT31A	—	—	—
—	—	—	RR310	CT31A	—	—	—
—	—	—	RR312	CT31A	—	—	—
—	—	—	RR316	CT31A	—	—	—
—	—	—	RR324	CT31A	—	—	—
—	—	—	RR310	CT31A	—	—	—
—	—	—	RR312	CT31A	—	—	—
—	—	—	RR316	CT31A	—	—	—
—	—	—	RR324	CT31A	—	—	BBG24
—	—	—	RR335	CT31A	—	—	—

200 Series

The 200 Series from Atlas is the industry standard utility electronic equipment rack; the series has been engineered to provide value as well as ample ventilation and wire management capabilities. The 16-gauge CRS constructed racks are available in 18½", 25½", and 30" depths and 21, 24, 35, 40, & 44 RU heights. Rear door and one pair of 11-gauge adjustable mounting rails included. The 200 Series is UL Listed (UL 1678).

Common features for all 200 models include:

- Extensive Wire Management Capabilities
- Five Model Heights
- Rear Door Offers Right or Left-Hand Hinging Capability
- Increased Panel Opening in Cabinet Base and Top Offers Wiring Convenience
- Manufactured to E.I.A. Standards
- Includes Perforated Vents, Front/Rear & Sides
- Ideal for Telecommunications, Broadcasting, Manufacturing, Testing Research, Educational and Institutional Application
- UL Listed (UL 1678)

100 Series

The 100 Series from Atlas provides sturdy construction and quality features while maintaining an economical price. The series is available in 18½" depth with 21, 24, 35, 40, & 44 RU heights. Rear door and one pair of 11-gauge fixed mounting rails included. The 100 Series is UL Listed (UL 1678).

Common features for all 100 models include:

- Impressive Wire Management Capabilities
- Five Model Heights
- Rear Door Offers Right or Left-Hand Hinging Capability
- Standard 5¼" Panel Opening in Cabinet Base and Top Offers Wiring Convenience
- Manufactured to E.I.A. Standards
- Includes Perforated Vents
- Ideal for Telecommunications, Broadcasting, Manufacturing, Testing, Research, Educational and Institutional Application
- UL Listed (UL 1678)



244-18



144-18

WMA Series:

The WMA Series from Atlas incorporates several of the same design and manufacturing characteristics as the FMA Series. This series of wall mount racks provide outstanding versatility, strength, and functionality. The innovative design of the WMA racks enable secure and simplified mounting process; which may be accomplished by one person. The 16-gauge CRS constructed racks are available in a 23½" depth and 10, 12, 16, 25, & 35 RU heights.

Common features for all WMA models include:

- Hinging of Center Section Regardless of Orientation
- Exclusive, Integral Atlas Racks "Alignment Frame" Provides Support Throughout the Complete Travel of the Center Section
- Back Pan Boxed Separately on Same Pallet with Center Section Allows Contractor to Send Rear Section to Job Site for Installation by Other Trades
- Top & Bottom Cutouts for Ventilation Panels (Ships with 3 RU Blank Panels)
- Finished in Durable Black Electrostatic Powder Coat
- 12-½" x 12-½" Cut-Out on Back Pan Allows Easy Cable Access Through Mounting Surface
- Continuous Slot "Hat Section" Allows Full Front to Back Adjustment of Rack Rails
- Securing Holes Top & Bottom Provide Fixed Positioning of Rails
- Ships with One (1) Pair of Rack Rails
- Rails Include Hash Marks to Indicate Rack Unit Increments
- Side Lock Security System Provides an Easy & Secure Method of Joining Center Section to Back Pan
- Extensive Internal Bracing Also Provides Cable Management / Pass Through
- Multiple Knockouts Top & Bottom of Rear Section for Conduit & Wireless Antennas
- Back Pan Includes Raised Mounting Embosses to Mount Power & Other Accessories



WMA16-23
(Shown with optional
SFD16 Solid Front Door)

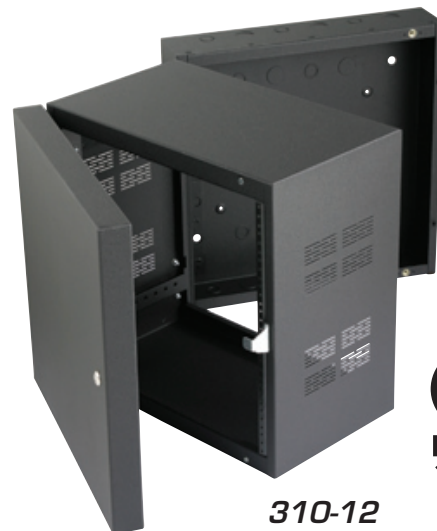


300 Series

The 300 Series from Atlas are sectional wall cabinets for 19" equipment that protect rack mount equipment and maximize valuable floor space. The 300 Series offers 12" & 15" depths; the 12" model is available in 7, 10, 12, 16, 24, or 35 RU heights while the 15" model is available in 10, 12, 16, 24, or 35 RU heights. These pre-assembled sectional wall-mount cabinets feature right or left-hand hinging capabilities and have been engineered to offer increased mounting, wiring and structural capabilities.

Common features for all 300 models include:

- Sturdy Wall-mount Cabinet Protects Equipment and Saves Valuable Floor Space
- Selection Includes Models With 12" and 15", Deep Center Mounting Sections
- Reinforced Frame Flanges, Plus Corner-brace Structural Supports And Electric-welded Seams & Miters Provide Stability For Mounted Equipment
- Punched Vents Assure Heat Dissipation
- Wire Management Provisions Allow Organized Wire Access
- Adjustable Mounting Rails Provide Flexibility
- Includes Solid Front Door



310-12



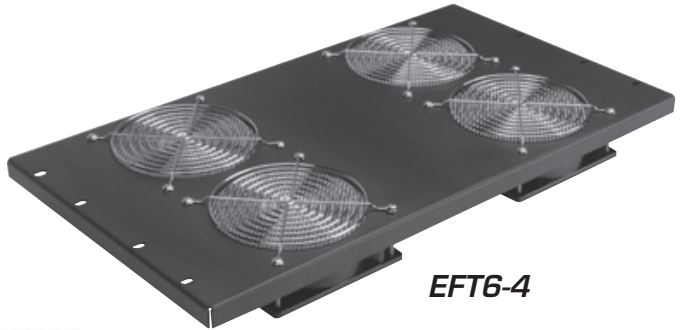
Accessories

All Atlas Rack solutions offer an extensive list of options including*:

- Ventilation Panels & Accessories
- Numerous Doors & Side Panels
- Lacing & Bus Bars
- Solid & Perforated Blank Panels
- Drawers & Shelving Accessories
- Caster & Mounting Kits



MPFD Series Doors



EFT6-4



**MMK17-RM
Keyboard and Monitor Unit**



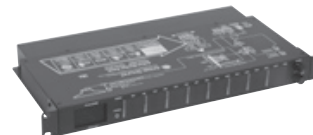
SD Series Drawers



VTD1-16



SH Series Shelves



MVXA-2016



**LR4 and LRS
Lacing Bars**

**Some options may be series specific and not available for all models.*

