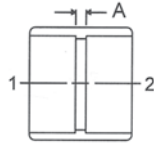


**ADAPTER • TRAP**

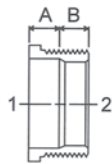
**COPPER DWV**



WROT N/A	WROT		CONNECTION <b>C x O.D. TUBE</b>			CAST D-738*			
	ELKHART		CAST 5180	WROT N/A	NIBCO		CAST 801-T		
I	Nominal Size 2 3		Part Number	Box Qty.	Master Qty.	Approx. Net.Wt.	Dimensions A B C		
	1-1/4" OD		A 07251*	-	-	.21	1/8		
	1-1/2" OD		A 07252*	-	-	.24	7/32		
<b>REDUCING</b>									
	1-1/2" x 1-1/4" OD		A 07253	-	-	.20	9/32		

**ADAPTER • TRAP**

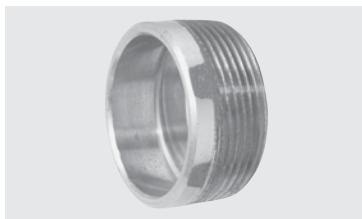
**COPPER DWV**



WROT N/A	WROT		CONNECTION <b>C x M</b>			CAST D-732F*			
	ELKHART		CAST 5804-S	WROT N/A	NIBCO		CAST 802		
I	Nominal Size 2 3		Part Number	Box Qty.	Master Qty.	Approx. Net.Wt.	Dimensions A B C		
	1-1/4"		A 07230*	-	-	.22	15/16 7/16		
	1-1/2"		A 07231*	-	-	.25	1-7/16		
	2"		A 07232*	-	-	.33	1-1/16 7/16		
	3"		A 07264*	-	-	.77	1-1/2 3/4		
<b>REDUCING</b>									
	1-1/4" x 1-1/2"		A 07263*	-	-	.44	1-1/2		

**ADAPTER • TRAP (FLUSH)**

**COPPER DWV**



WROT N/A	WROT		CONNECTION <b>C x M</b>			CAST D-732F*			
	ELKHART		CAST 5802-C	WROT N/A	NIBCO		CAST 802-C		
I	Nominal Size 2 3		Part Number	Box Qty.	Master Qty.	Approx. Net.Wt.	Dimensions A B C		
	1-1/2"		A 07645*	-	-	.19	15/16 9/16		
	2"		A 07646*	-	-	.25	1-1/16 5/8		

**ADAPTER • SLIP JOINT**

**COPPER DWV**



WROT N/A	WROT		CONNECTION <b>C x SJ THD</b>			CAST D-729*			
	ELKHART		CAST 5802	WROT N/A	NIBCO		CAST 802-F		
I	Nominal Size 2 3		Part Number	Box Qty.	Master Qty.	Approx. Net.Wt.	Dimensions A B C		
	1-1/4"		W 07050*	-	-	.05	3/8		
	1-1/2"		W 07051*	-	-	.05	3/8		
	2"		W 07052*	-	-	.06	3/8		

TUBE & PIPE

METAL FITTINGS & NIPPLES

PLASTIC FITTINGS & NIPPLES

VALVES

FAUCETS & BATH ACCESSORIES

SPECIALTIES

