



SD2-14

SD Series - Recessed Storage Drawers

Perfect for storage of discs, microphones, tools, and accessory items in fixed or portable racks. 16-gauge CRS drawers mount into 19" cabinets and ship complete with high impact plastic pull handles and steel ball bearing rollers. Drawer hanger assembly is inverted to prevent contents from spilling if cabinet is tilted. Slots are included in the hanger assembly to allow use of SH Series rear support brackets for additional stability in mobile applications. Optional SD-LOCK may be installed for additional security (discrete hole plug fills cut-out if lock is not required). Overall drawer depth is 14 $\frac{3}{4}$ ". Models available in 2, 3, 4, & 6RU heights.



CD4

CD4 - Media Storage Shelves

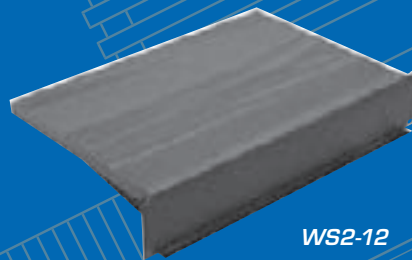
Convenient CD media storage shelf features slot dividers for increased strength. Construction is of 16-gauge cold rolled steel finished in black textured electrostatic powder coat (-052). Unit holds 40 standard CD jewel cases.



SH1-10

Vented One-Piece All-Purpose Shelf

Versatile formed shelving is 16-gauge CRS and includes mounting holes on E.I.A. standard spacing. Finished in black textured finish. Unit is secured using a single pair of front mounting rails. No assembly is required.

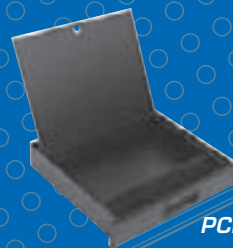


WS2-12

Economical Exterior Shelf / Writing Surface

WS2-12

Cost-effective shelf attaches to front mounting rails of 19" cabinets for application as an exterior component mounting shelf or writing surface. Shelf is wood grain formica-covered particle board supported by 16-gauge CRS spot-welded brackets. Brackets are a -052 Flat Black finish. Use standard panel mounting hardware (not supplied).

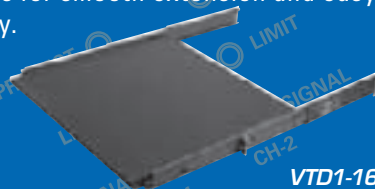


PCD3-16-052

Pencil Drawer

PCD3-16-052

Dual-function sliding pencil drawer features a handy storage area covered by a lift-up writing surface. Unit is constructed of 18-gauge CRS and mounts in most 19" rack or cabinet. Hinged writing surface is 16 $\frac{5}{16}$ " wide particle board covered with wood grain laminate. Drawer slides include hold-in detents and 100lbs (45 kg) rated steel ball bearings for smooth extension and easy content accessibility.



VTD1-16

Sliding Shelf / Tray for Cabinets with Front & Rear Rails

VTD1-16

Versatile shelf provides easy access to keyboards, video tape recorders and control equipment. Solid bearing slides extend to a full 17" (432mm) outside of cabinet rails with lock-out protection. Dual-purpose design may be used right-side up as a shelf or upside-down as a tray with a protective lip according to desired application. Model mounts 19" cabinets (18 $\frac{1}{2}$ " to 25 $\frac{1}{2}$ " deep) equipped with front and rear mounting rails. Load bearing capacity is 85lbs (38.5kg). Constructed of 16-gauge CRS and finished in standard black.