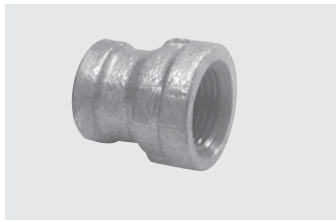


**COUPLING • REDUCING**

**MALLEABLE IRON**



Galvanized Part No.	Black Part No.	Size	Inner/Master Carton Qty.	Master Weight (lbs.)
511-310	521-310	1/4" x 1/8"	25/600	49
511-320	521-320	3/8" x 1/8"	30/360	38
511-321	521-321	3/8" x 1/4"	30/360	41
511-330	521-330	1/2" x 1/8"	50/300	41
511-331	521-331	1/2" x 1/4"	50/300	46
511-332	521-332	1/2" x 3/8"	40/240	41
511-340	521-340	3/4" x 1/8"	35/210	46
511-341	521-341	3/4" x 1/4"	30/180	41
511-342	521-342	3/4" x 3/8"	30/180	65
511-343	521-343	3/4" x 1/2"	60/180	49
511-351	521-351	1" x 1/4"	25/200	69
511-352	521-352	1" x 3/8"	40/120	44
511-353	521-353	1" x 1/2"	30/120	48
511-354	521-354	1" x 3/4"	30/120	55
511-362	521-362	1-1/4" x 3/8"	50/100	52
511-363	521-363	1-1/4" x 1/2"	25/75	40
511-364	521-364	1-1/4" x 3/4"	25/75	45
511-365	521-365	1-1/4" x 1"	25/75	50
511-372	521-372	1-1/2" x 3/8"	20/120	48
511-373	521-373	1-1/2" x 1/2"	20/60	42
511-374	521-374	1-1/2" x 3/4"	30/60	44
511-375	521-375	1-1/2" x 1"	30/60	50
511-376	521-376	1-1/2" x 1-1/4"	25/50	47
511-383	521-383	2" x 1/2"	21/42	47
511-384	521-384	2" x 3/4"	21/42	48
511-385	521-385	2" x 1"	14/28	35
511-386	521-386	2" x 1-1/4"	14/28	37
511-387	521-387	2" x 1-1/2"	14/28	38
511-394	521-394	2 1/2" x 3/4"	NA/20	35
511-395	521-395	2-1/2" x 1"	16/32	59
511-396	521-396	2-1/2" x 1-1/4"	16/32	60
511-397	521-397	2-1/2" x 1-1/2"	16/32	67
511-398	521-398	2-1/2" x 2"	16/32	66
511-304	521-304	3" x 3/4"	NA/24	58
511-305	521-305	3" x 1"	12/24	63
511-306	521-306	3" x 1-1/4"	12/24	64
511-307	521-307	3" x 1-1/2"	12/24	68
511-308	521-308	3" x 2"	7/14	42
511-309	521-309	3" x 2-1/2"	NA/12	41
511-325	521-325	4" x 1"	NA/9	36
511-326	521-326	4" x 1-1/4"	NA/9	41
511-327	521-327	4" x 1-1/2"	NA/9	39
511-328	521-328	4" x 2"	NA/9	43
511-329	521-329	4" x 2-1/2"	NA/9	47
511-300	521-300	4" x 3"	NA/7	40
511-323	521-323	6" x 4"	NA/4	38
511-322	521-322	6" x 3"	NA/4	41

TUBE & PIPE

METAL FITTINGS & NIPPLES

PLASTIC FITTINGS & NIPPLES

VALVES

FAUCETS & BATH ACCESSORIES

SPECIALTIES

