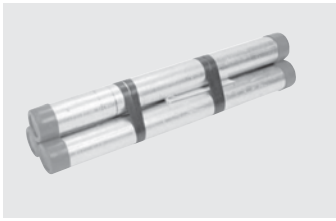


PRE-CUT PIPE

STANDARD WELDED STEEL



3/8"

Galvanized Part No.	Black Part No.	Description	Weight Approx. (Lbs.)	Inner Box	Master Ctn.	Inner/Master Wt.(Lbs.)
562-180	582-180	3/8" x 18"	0.85	5	-	4.2
562-240	582-240	3/8" x 24"	1.13	5	-	5.6
562-300	582-300	3/8" x 30"	1.41	5	-	7.1
562-360	582-360	3/8" x 36"	1.69	5	-	8.5
562-480	582-480	3/8" x 48"	2.26	5	-	11.3
562-600	582-600	3/8" x 60"	2.82	5	-	14.1



1/2"

Galvanized Part No.	Black Part No.	Description	Weight Approx. (Lbs.)	Inner Box	Master Ctn.	Inner/Master Wt.(Lbs.)
563-180	583-180	1/2" x 18"	1.28	5	-	6.4
563-240	583-240	1/2" x 24"	1.71	5	-	8.5
563-300	583-300	1/2" x 30"	2.13	5	-	10.7
563-360	583-360	1/2" x 36"	2.56	5	-	12.8
563-480	583-480	1/2" x 48"	3.41	5	-	17.1
563-600	583-600	1/2" x 60"	4.27	5	-	21.3
563-720	583-720	1/2" x 72"	5.12	5	-	25.6

3/4"

Galvanized Part No.	Black Part No.	Description	Weight Approx. (Lbs.)	Inner Box	Master Ctn.	Inner/Master Wt.(Lbs.)
564-180	584-180	3/4" x 18"	1.70	5	-	8.5
564-240	584-240	3/4" x 24"	2.27	5	-	11.4
564-300	584-300	3/4" x 30"	2.84	5	-	14.2
564-360	584-360	3/4" x 36"	3.41	5	-	17.0
564-480	584-480	3/4" x 48"	4.54	5	-	22.7
564-600	584-600	3/4" x 60"	5.68	5	-	28.4
564-720	584-720	3/4" x 72"	6.81	5	-	34.1

1"

Galvanized Part No.	Black Part No.	Description	Weight Approx. (Lbs.)	Inner Box	Master Ctn.	Inner/Master Wt.(Lbs.)
565-180	585-180	1" x 18"	2.52	3	-	7.6
565-240	585-240	1" x 24"	3.36	3	-	10.1
565-300	585-300	1" x 30"	4.20	3	-	12.6
565-360	585-360	1" x 36"	5.04	3	-	15.1
565-480	585-480	1" x 48"	6.72	3	-	20.2
565-600	585-600	1" x 60"	8.40	3	-	25.2
565-720	585-720	1" x 72"	10.08	3	-	30.2

Cut Pipe in
2-1/2", 3" & 4"
available upon request