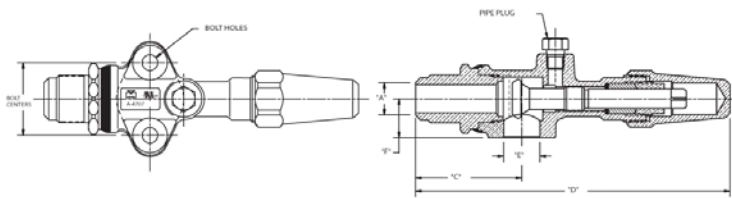
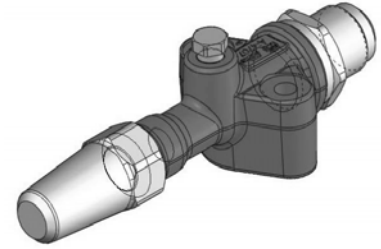


# Brass Compressor Valves

## Straight Port, 45° Flare

### Features:

- Maximum working pressure (PS): 700 psig, 48 bar
- Working temperature range (TS): -40°F/300°F, -40°C/149°C
- Compatible with all CFC, HCFC and HFC refrigerants and oils
- UL/cUL Recognized, CE Certified
- 100% tested
- Asbestos-free valve packing
- Valve openings designed for maximum flow and minimum pressure drop



### References

- \* Valve kit includes valve, gasket and bolts
- \*\* Replacement kit contains components to pack stem (pack gland, packing and pack washer)
- \*\*\* Cap and cap gasket kit
- \*\*\*\* Seal cap and o-ring kit
- \*\*\*\*\* O-ring included

### Dimensions

Valve Part Number	Valve Kit *	A (in)	C (in)	D (in)	E (in)	F (in)	Bolt Centers (in)	Bolt Hole Diameter (in)	Pipe Plug Size (in)	Flange Thickness (in)	Seat Position	Valve Wt (lb)	Kit Wt (lb)
A 13166		3/4	2.37	7.05	0.81	0.85	1 5/8	.34	1/8	1 1/4	Mid	1.78	

### Metric Dimensions

Valve Part Number	Valve Kit *	A (mm)	C (mm)	D (mm)	E (mm)	F (mm)	Bolt Centers (mm)	Bolt Hole Diameter (mm)	Pipe Plug Size (in)	Flange Thickness (mm)	Seat Position	Valve Wt (kg)	Kit Wt (kg)
A 13166		19	60	179	21	19	41	9	1/8	32	Mid	0.81	

### Torque To Seal

Front Seat		Back Seat		Pack Gland		Pipe Plug	Plastic Cap	Brass Cap		Steel Cap		Cast Iron Cap
ft-lb	N-m	ft-lb	N-m	ft-lb	N-m			ft-lb	N-m	ft-lb	N-m	
22 - 40	30 - 54	25 - 45	34 - 61	15 - 25	20 - 34	2 - 3 Threads Exposed	Hand Tight	40 - 50	54 - 68	NA	NA	NA

### References

Valve Part Number	Body	Standard Seal Cap			Replacement Seal Cap			Replacement Kit**	Valve Kit*	Manufacturer Reference	
		Material	Seal Cap	Gasket	Kit*****	Plastic	Brass*****			Steel	Cast Iron
A 13166	A 04707	Brass	A 04775	A 04710	A 15099		A 15099		A 17419		



RoHS Compliant. Comply with ISO 9001 Standards.

12/9/2010

121 Rogers Street • Hartsville, TN 37074  
 (800) 251-8983 or (615) 374-2124  
 FAX (800) 529-0884 or (615) 374-0932

www.muellerindustries.com