

GAS HEATER BALL VALVE • ONE PIECE BODY

FORGED BRASS



Part No.	UPC-A (032888)	Valve Size	I/M	Master Weight
117-592	175921	9/16" x 1/2"	10/100	34

- CSA- 3-88 (2 PSIG) Certified
- CSA Certified – Canadian Standards Association
- One piece body
- 9/16-24 fine flare thread for 3/8" tube
- Chrome plated forged brass ball
- Coated aluminum handle
- Threaded ends comply with ANSI B1.20.1

GAS BALL VALVE • TEXAS PATTERN • ONE PIECE

FORGED BRASS

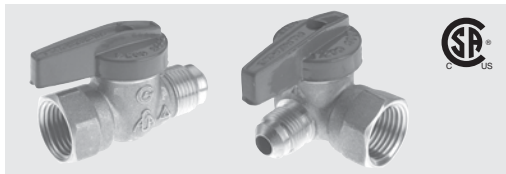


Part No.	UPC-A (032888)	Valve Size	I/M	Master Weight
115-503	155039	1/2"	10/100	37
115-504	155046	3/4"	10/100	42
115-503HC	155039	1/2"	20/NA	8
115-504HC	155046	3/4"	20/NA	8

- For use with water up to 175 PSI
- CSA- 3-88 (2 PSIG) Certified
- CSA Certified – Canadian Standards Association
- One piece body
- Chrome plated forged brass ball
- Coated aluminum handle
- Threaded ends comply with ANSI B1.20.1
- Available in Handy Carton (HC) bin box packaging

GAS BALL VALVE • FLARE END • ONE PIECE BODY

FORGED BRASS

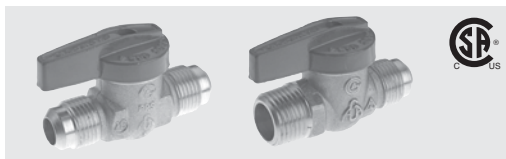


Part No.	UPC-A (032888)	Valve Size	Inner/Master Carton Qty.	Master Weight (lbs.)
Flare x Female				
114-522	145221	3/8" x 1/2"	10/100	34
114-523	145238	1/2" x 1/2"	10/100	37
114-524	145245	15/16" x 3/4"	10/100	58
114-543	145436	15/16" x 1/2"	10/100	40
114-544	145443	1/2" x 3/4"	10/100	41
Flare x Female Angle				
114-533	145337	3/8" x 1/2"	10/100	33
114-534	145344	15/16" x 3/4"	10/100	57

- Manufactured in an ISO 9001 facility
- CSA Z21 (15PSIG) Certified
- CSA Certified – Canadian Standards Association
- One piece body
- Chrome plated forged brass ball
- Coated aluminum handle
- Threaded ends comply with ANSI B1.20.1
- Available in Handy Carton (HC) bin box packaging

GAS BALL VALVE • FULL PORT • 600 PSI

FORGED BRASS



Part No.	UPC-A (032888)	Valve Size	Inner/Master Carton Qty.	Master Weight (lbs.)
Flare x Flare				
116-502	165021	3/8"	10/100	39
116-503	165038	1/2"	10/100	35
116-504	165045	5/8"	10/100	54
Flare x Male				
116-512	165120	3/8" x 1/2"	10/100	33
116-513	165137	1/2" x 1/2"	10/100	36

- Manufactured in an ISO 9001 facility
- CSA- 3-88 (2 PSIG) Certified
- CSA Certified – Canadian Standards Association
- One piece body
- Chrome plated forged brass ball
- Coated aluminum handle
- Threaded ends comply with ANSI B1.20.1

