

FLEXIBLE METAL HOSE

- LITERATURE
 - SUBMITTALS/SPECS
 - DRAWINGS
 - INSTALL INSTRUCTIONS
 - O&M MANUALS
 - WHITE PAPERS
- CASE STUDIES

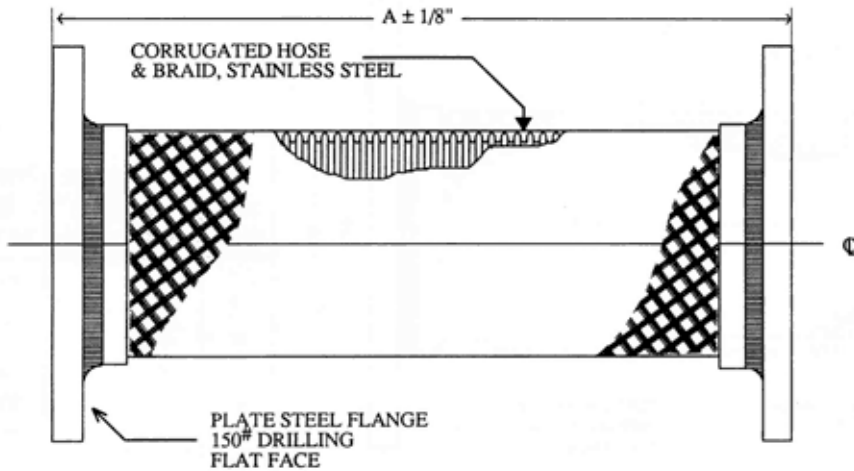
FLEXIBLE METAL HOSE

Model SLP

Flexible metal hose pump connector to minimize vibration.

Maximum Permanent Offset from 3/4".

Maximum Intermittent Offset from 3/8".



MODEL NO.	PIPE SIZE	A ± 1/8"	PERMANENT OFFSET	INTERMITTENT OFFSET	PRESSURE PSI @ 70° F	Weight (lbs)	3D DRAWING
SLP0250	2.5"	10-1/4"	.75"	.375"	345	13	CAD
SLP0300	3"	10-5/8"	.75"	.375"	389	14	CAD
SLP0400	4"	11-3/4"	.75"	.375"	300	19	CAD
SLP0500	5"	13-5/8"	.75"	.375"	220	27	CAD
SLP0600	6"	14-1/8"	.75"	.375"	200	30	CAD
SLP0800	8"	15-3/8"	.75"	.375"	190	62	CAD
SLP1000	10"	17-3/4"	.75"	.375"	150	68	CAD
SLP1200	12"	18-3/8"	.75"	.375"	125	153	CAD
SLP1400	14"	20"	.75"	.375"	105	-	CAD

All dimensions in inches. All units cleaned and degreased. Packed in ply bags.
 *Also identified as nominal size refrigeration and automotive tubing.
 **Sizes from 2-1/2" employ stainless steel braided hose to assure high pressures.

[Top](#)