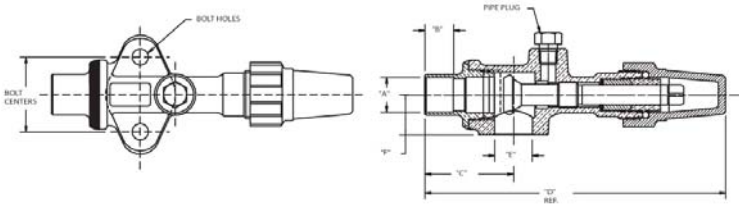
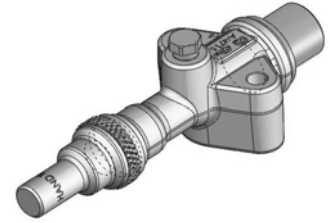


Brass Compressor Valves

Straight Port, Solder

Features:

- Maximum working pressure (PS): 700 psig, 48 bar
- Working temperature range (TS): -40°F/300°F, -40°C/149°C
- Compatible with all CFC, HCFC and HFC refrigerants and oils
- UL/cUL Recognized, CE Certified
- 100% tested
- Asbestos-free valve packing
- Valve openings designed for maximum flow and minimum pressure drop



References

- * Valve kit includes valve, gasket and bolts
- ** Replacement kit contains components to pack stem (pack gland, packing and pack washer)
- *** Cap and cap gasket kit
- **** Seal cap and o-ring kit
- ***** O-ring included

Dimensions

Valve Part Number	Valve Kit *	A (in)	B (in)	C (in)	D (in)	E (in)	F (in)	Bolt Centers (in)	Bolt Hole Diameter (in)	Pipe Plug Size (in)	Flange Thickness (in)	Seat Position	Valve Wt (lb)	Kit Wt (lb)
A 16310		3/7	0.62	1.91	6.49	0.81	0.88	1 5/8	.34	1/8	1 21/64	Front	1.64	
A 16311	A 17545	7/8	0.76	1.97	6.55	0.81	0.88	1 5/8	.34	1/8	1 21/64	Front	1.63	4.97
B 32197	A 17529	7/8	0.76	1.97	6.47	0.81	0.88	1 3/4	.34	1/8	1 21/64	Mid	1.42	1.69
A 15500		1 1/8	0.9	2.06	6.64	0.81	0.88	1 5/8	.34	1/8	1 21/64	Back	1.43	
A 16312	A 17516	1 1/8	0.9	2.06	6.64	0.81	0.88	1 5/8	.34	1/8	1 21/64	Front	1.66	1.55

Metric Dimensions

Valve Part Number	Valve Kit *	A (mm)	B (mm)	C (mm)	D (mm)	E (mm)	F (mm)	Bolt Centers (mm)	Bolt Hole Diameter (mm)	Pipe Plug Size (in)	Flange Thickness (mm)	Seat Position	Valve Wt (kg)	Kit Wt (kg)
A 16310			16	49	165	21		41	9	1/8		Front	0.74	
A 16311	A 17545	22	19	50	166	21	22	41	9	1/8		Front	0.74	2.25
B 32197	A 17529	22	19	50	164	21	22		9	1/8		Mid	0.64	0.77
A 15500		29	23	52	169	21	29	41	9	1/8		Back	0.65	
A 16312	A 17516	29	23	52	169	21	29	41	9	1/8		Front	0.75	0.70

Torque To Seal

Front Seat		Back Seat		Pack Gland		Pipe Plug	Plastic Cap	Brass Cap		Steel Cap		Cast Iron Cap
ft-lb	N-m	ft-lb	N-m	ft-lb	N-m			ft-lb	N-m	ft-lb	N-m	
22 - 40	30 - 54	25 - 45	34 - 61	15 - 25	20 - 34	2 - 3 Threads Exposed	Hand Tight	40 - 50	54 - 68	NA	NA	NA



RoHS Compliant. Comply with ISO 9001 Standards.

12/9/2010

121 Rogers Street • Hartsville, TN 37074
 (800) 251-8983 or (615) 374-2124
 FAX (800) 529-0884 or (615) 374-0932

www.muellerindustries.com