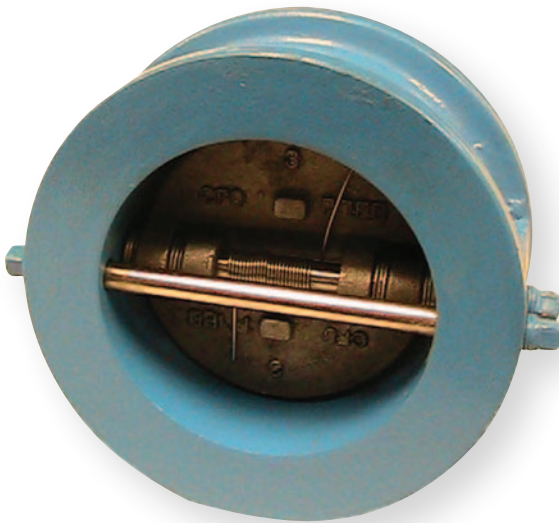


CHECK VALVES

Spring Loaded Check Valves Standard Features

- Spring Loaded for Non-Slam Closure
- Heavy Duty Ductile Iron Body
- Automatic Operation
- Designed for ANSI Class 125 Flange Bolting
- Economical Purchase Price
- Suitable for Horizontal or Vertical (up) Piping
- Stocked in Sizes 2" thru 24"
- Compact Design

Scope of the Line: Double Disc Check Valve – Series 740A

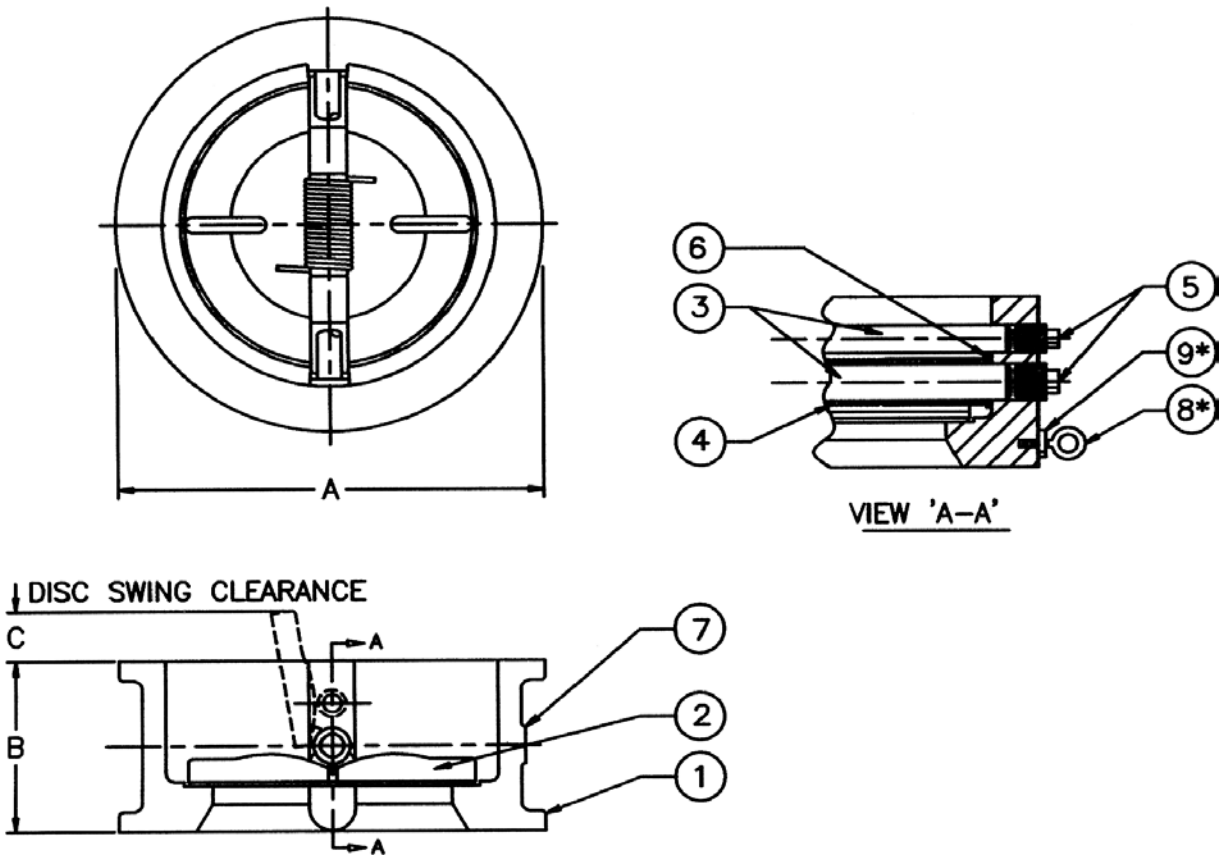


- Body:** Ductile Iron-Wafer Pattern
- Disc:** Stainless Steel
- Seat:** EPDM (elastomer)
- Rating:** 250 psi
- Availability:** 2" thru 36"

Double Disc Check Valve: Technical Specifications

Check valve shall be of the double disc, wafer style with torsion spring induced closure. Valve shall be Wafer style for bolting between ANSI Class 125 flanges. Valves have a Ductile Iron body (ASTM A-536 65-45-12) to fit inside 125# ANSI bolt circles, a two piece Stainless Steel disc (ASTM type 304), type 304 Stainless Steel dual shafts, ASTM A313, type 304 Stainless Steel torsion spring and have an integrally molded elastomer seat vulcanized to the body. Valve for horizontal flow shall be installed with the shafts in vertical position. Double disc check valve shall be Milliken Series 740A as manufactured by Milliken Valve.

Double Disc Check Valve – Series 740A



MATERIALS OF CONSTRUCTION

ITEM	QTY	DESCRIPTION	MATERIAL
1	1	BODY/SEAT	DUCTILE IRON/EPDM
2	2	DISC	304 STN. STL.
3	2	SHAFT	304 STN. STL.
4	2	SPRING	304 STN. STL.
5	4	PLUG	304 STN. STL.
6	AR	WASHER	304 STN. STL.
7	1	NAME PLATE	ALUMINUM
8*	2	EYE BOLT	STEEL
9*	2	HEX NUT	STEEL

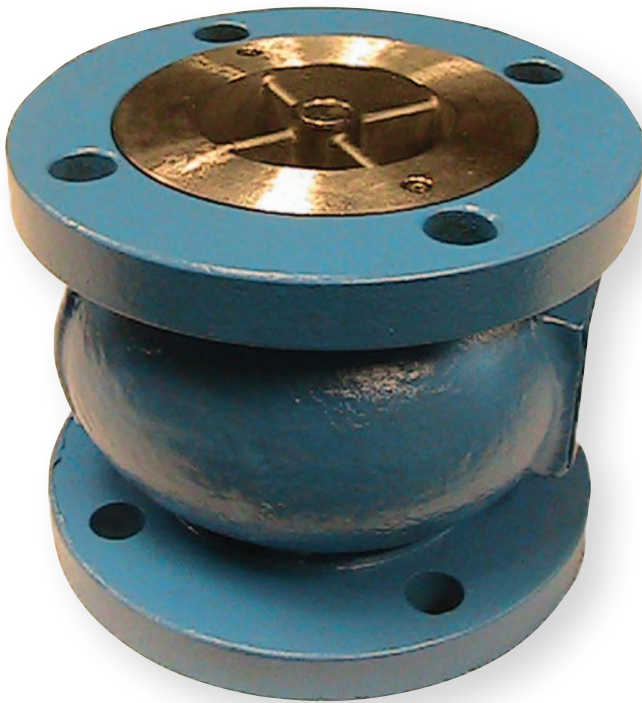
*NOTE: ITEMS 8 & 9 FOR 8" AND LARGER VALVES

SIZE	2	2.5	3	4	5	6	8	10	12	14	16	18	20	24
A	4.10	4.88	5.33	6.88	7.75	8.75	11	13.38	16.13	17.75	20.25	21.63	23.88	28.25
B	2.13	2.13	2.25	2.5	2.75	3	3.75	4.25	5.63	7.25	7.5	8	8.38	8.75
C	—	.16	.63	.94	1.34	1.72	2.5	3.38	4.13	3.13	4.38	5.13	6.0	8.5
WT	8.8	12.6	18.3	26.2	34.8	42.1	75	119.5	188.1	227.3	282.2	337.3	370.6	638.2

NOTE: Drawings are for information purposes only; please request certified drawings before preparing piping diagrams.

Consult factory for sizes larger than 24"

Scope of the Line: Globe Style Check Valve – Series 821A

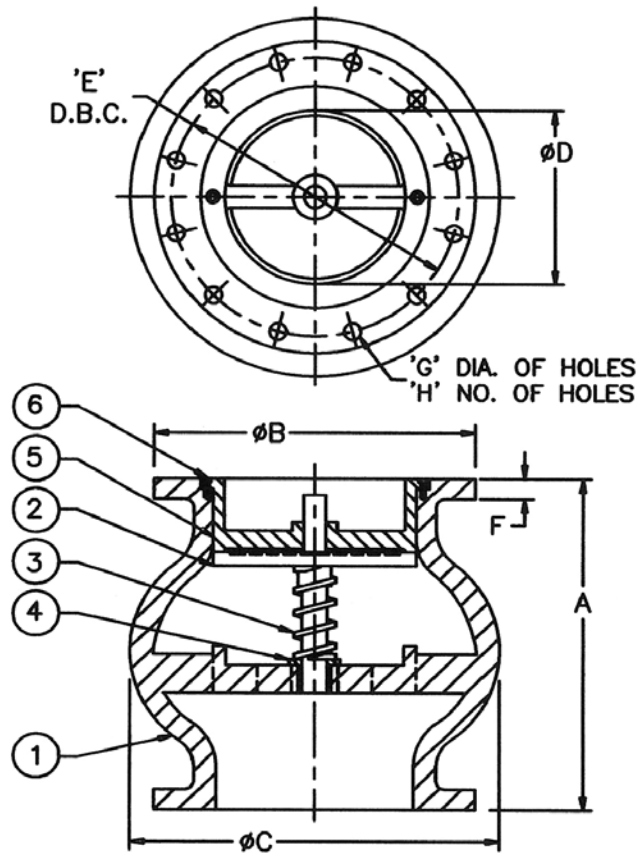


Body:	Ductile Iron
Disc:	Stainless Steel
Seat:	Stainless Steel/EPDM
Rating:	250 psi
Flanges:	ASME B16.1 CL.125
Availability:	2" thru 24"

Globe Style Check Valve: Technical Specifications

Check valve shall be of the silent operating type and the same size as the entering pipe. Globe style thru 24 inches shall be rated 250PSI WOG, have a Ductile Iron body (ASTM A-536 65-45-12), 125# ANSI Flat Face Flanges, ASTM A313 Type 304 Stainless Steel helical or conical spring, a Stainless Steel (ASTM type 304) seat and dual guided disc (top and bottom), 304 Stainless Steel guide bushing and type 304 Stainless Steel guide pins. Check valve to have a minimum open area in the body of 110% of the area of the entering or corresponding pipe. Valve is to operate silently in either vertical or horizontal positions, flow up or down. Globe style check valve shall be Milliken Series 821A as manufactured by Milliken Valve.

Globe Style Check Valve – Series 821A



MATERIALS OF CONSTRUCTION

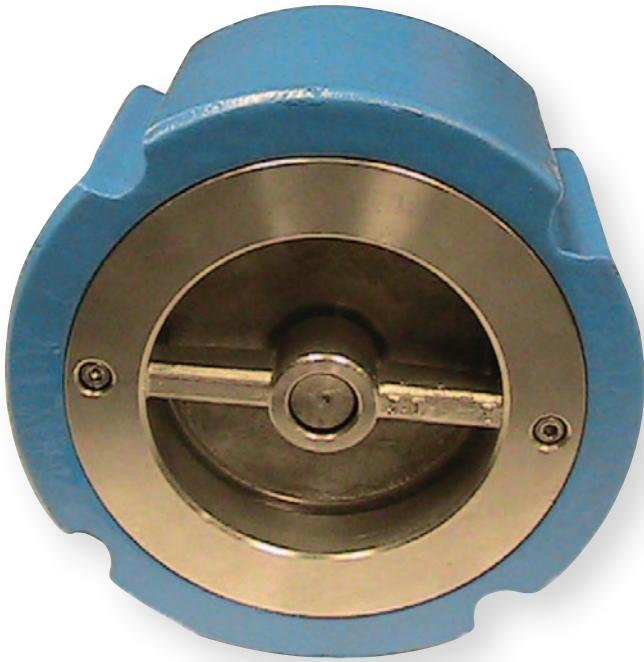
ITEM	QTY	DESCRIPTION	MATERIAL
1	1	BODY	DUCTILE IRON
2	1	DISC	304 STN. STL.
3	1	SPRING	304 STN. STL.
4	1	BUSHING	304 STN. STL.
5	1	SEAT	304 STN. STL./EPDM
6	AR	CAPSCREW	304 STN. STL.

SIZE	2	2.5	3	4	5	6	8	10	12	14	16	18	20	24
A	4	5.5	6	7.25	8.5	9.75	12.5	15.5	14.25	15.75	17.63	18.75	20.63	24
B	6	7	7.5	9	10	11	13.5	16	19	21	23.5	25	27.5	32
C	4.63	6	6.88	8.5	9.75	11.13	16.13	17.88	19.13	22.5	26	29	32.75	34
D	2.13	2.75	3	4	5	6	8	10	12	13.88	15.25	16.75	19.25	20.75
E	4.75	5.5	6	7.5	8.5	9.5	11.75	14.25	17	18.75	21.25	22.75	25	29.5
F	.62	.69	.75	.94	.94	1	1.12	1.19	1.25	1.38	1.44	1.56	1.69	1.88
G	.75	.75	.75	.75	.88	.88	.88	1	1	1.12	1.12	1.25	1.25	1.38
H	4	4	4	8	8	8	8	12	12	12	16	16	20	20
WT	14.3	24.4	28.6	44.1	56	83.4	142.4	219	362.6	465.1	660.5	919	1174	1586

NOTE: Drawings are for information purposes only; please request certified drawings before preparing piping diagrams.

Consult factory for sizes larger than 24"

Scope of the Line: Compact Wafer-Silent Check Valve – Series 720A

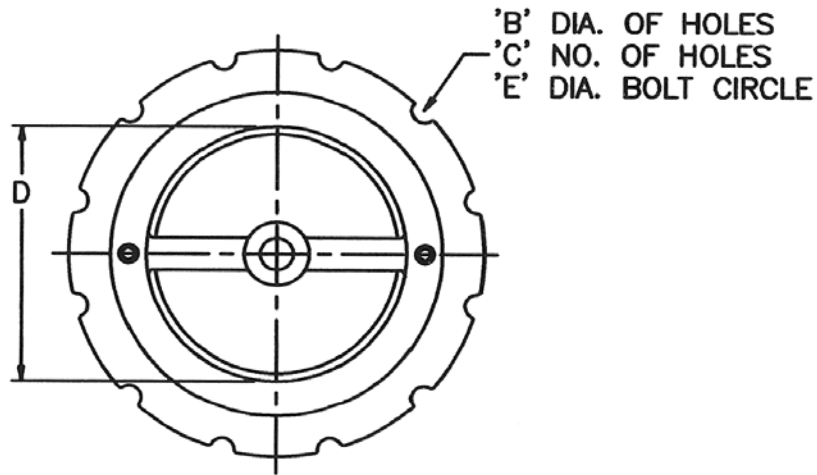


Body:	Ductile Iron
Disc:	Stainless Steel
Seat:	Stainless Steel/EPDM
Rating:	250 psi
Availability:	2" thru 12"

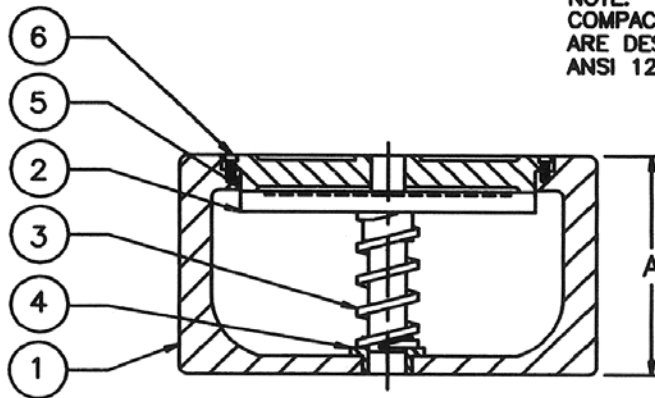
COMPACT WAFER-SILENT CHECK VALVE: TECHNICAL SPECIFICATIONS

Check valve shall be of the silent wafer type and the same size as the entering pipe. Valves shall be the compact wafer style and have a pressure and temperature rating equal to or greater than the pipeline in which they are installed. Compact wafer-silent style check valves thru 12 inches shall be rated for 250PSI WOG for installation between ANSI Class 125 or Class 250 flanges, have a Ductile Iron body (ASTM A-536 65-45-12), ASTM A313, Type 304 Stainless Steel helical or conical spring, a Stainless Steel guide bushing and type 304 Stainless Steel guide pins. Valves are to operate silently in either vertical or horizontal positions, flow up or down. Compact wafer-silent check valve shall be Milliken Series 720A as manufactured by Milliken Valve.

Compact Wafer-Silent Check Valve – Series 720A



NOTE:
COMPACT SILENT CHECK VALVES
ARE DESIGNED TO FIT INSIDE
ANSI 125 AND 250 BOLT CIRCLES.



MATERIALS OF CONSTRUCTION

ITEM	QTY	DESCRIPTION	MATERIAL
1	1	BODY	DUCTILE IRON
2	1	DISC	304 STN. STL.
3	1	SPRING	304 STN. STL.
4	1	BUSHING	304 STN. STL.
5	1	SEAT	304 STN. STL./EPDM
6	AR	CAPSCREW	304 STN. STL.

SIZE	2	2.5	3	4	5	6	8	10	12
A	2.63	2.88	3.13	4	4.75	5.5	6.5	8.25	11.25
B	0.75	0.75	0.75	0.75	0.88	0.88	0.88	1.00	1.00
C	4	4	4	8	8	8	8	12	12
D	2.0	2.5	3.0	4.0	5.0	6.0	8.0	10.0	12.0
E	4.75	5.50	6.00	7.50	8.50	9.50	11.75	14.25	17.0
APPROX. WGT. (LB.)	5.5	8.0	10.0	19.0	27.0	39.0	86.0	165.0	339.0

NOTE: Drawings are for information purposes only; please request certified drawings before preparing piping diagrams.