

# Performance Under Pressure

Most any valve can perform adequately under normal conditions. We build valves that will consistently excel over time, under virtually any condition or installation.

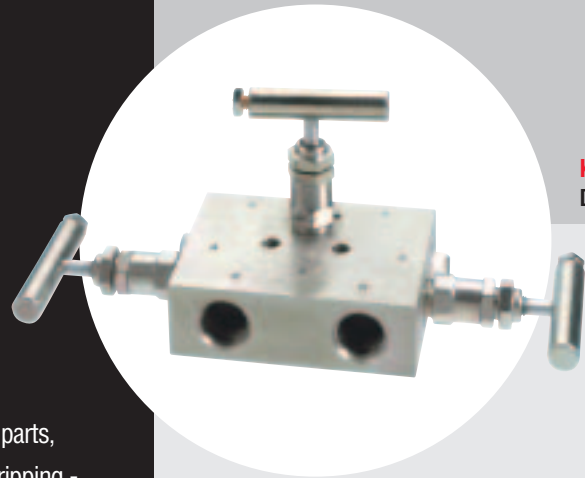
Bubble tight shut-off, lightweight, super strong construction, compact designs that require less parts, chrome plated stems that prevent galling and stripping - these valves are built to perform under pressure. That's why in some of the most rigid tests, Kerotest valves consistently meet or exceed industry standards.

If a valve is going to work as hard as you do, then the people who build it had better be good. Our engineers, designers and machinists are all part of a company committed to "performance under pressure." It means that they work to exceed the specs and add to the design, so that what you get is better than anything you expect.

For over 100 years, we have designed, manufactured and delivered. Every day, we're going to work as hard as you do.

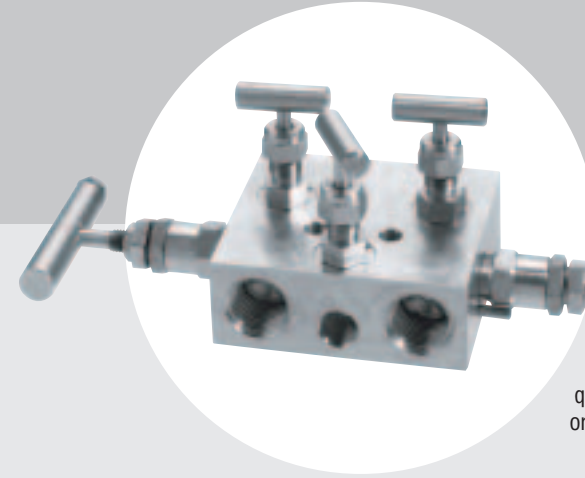
**Kerotest Manifold Valves.**  
**Performance Under Pressure.**

VALVES THAT WORK AS HARD AS YOU DO.



**KM1 3-VALVE**  
**DIFFERENTIAL PRESSURE MANIFOLD**

Designed for remote mount applications. This one manifold does the work of three valves, saving you money and time. Plus, its bonnet cap protection increases valve life and maintains the integrity of the stem threads.



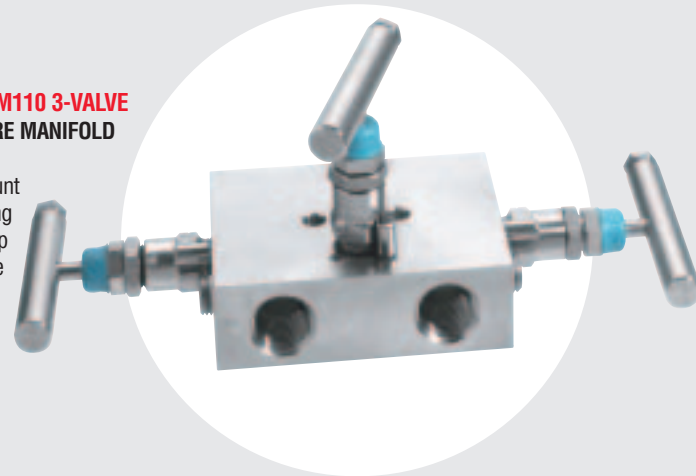
**KM6A 5-VALVE**  
**NATURAL GAS MANIFOLD**

Designed for recording orifice meters, this lightweight manifold eliminates the need for additional support when installed in meter tubing. It also features standard quarter-inch FNPT ports for connecting upstream or downstream static pressure.



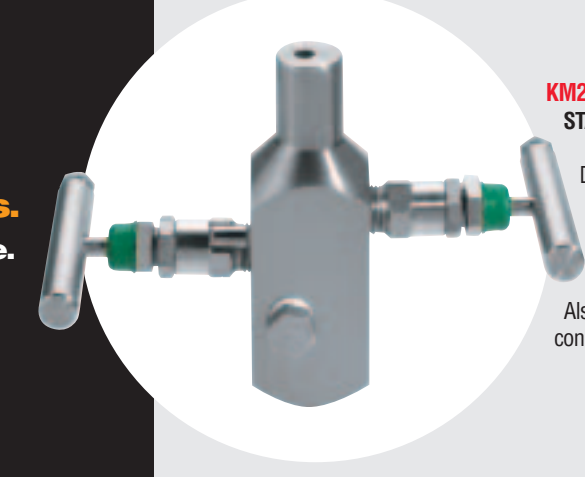
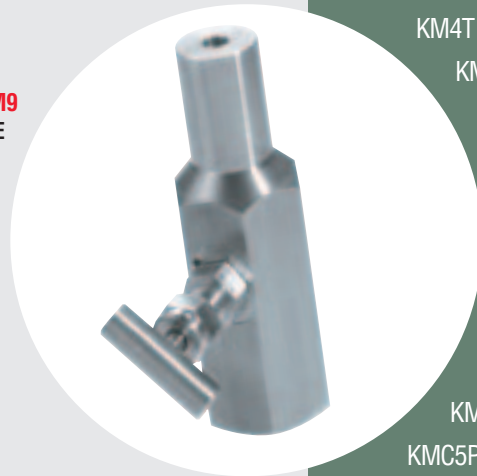
**KM110 3-VALVE**  
**DIFFERENTIAL PRESSURE MANIFOLD**

This high pressure, remote mount manifold features adjustable packing below the stem threads to keep process fluids away and isolate the stem threads. This helps assure a leakproof, long service life.



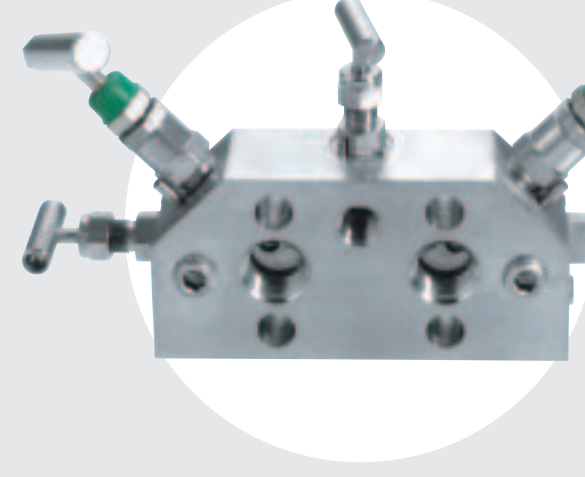
**KM9**  
**BLOCK AND BLEED GAUGE VALVE**

This compact model allows safe and cost efficient gauge installation. A field serviceable soft seat allows replacement while this valve is still in the line. Its one-piece handle design eliminates loss from vibration or misplacement.



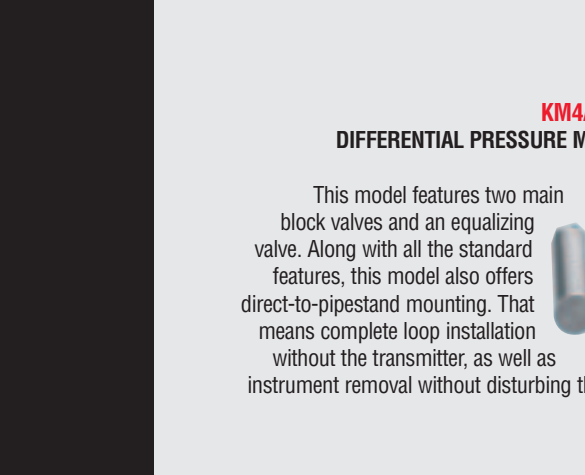
**KM251 2-VALVE**  
**STATIC PRESSURE MANIFOLD**

Designed to isolate, calibrate and vent, this compact model is available with standard, high pressure or high temperature bonnets. In addition, the chrome plated stem prevents freezing and galling problems. Also, features threaded vent ports for easy connections.



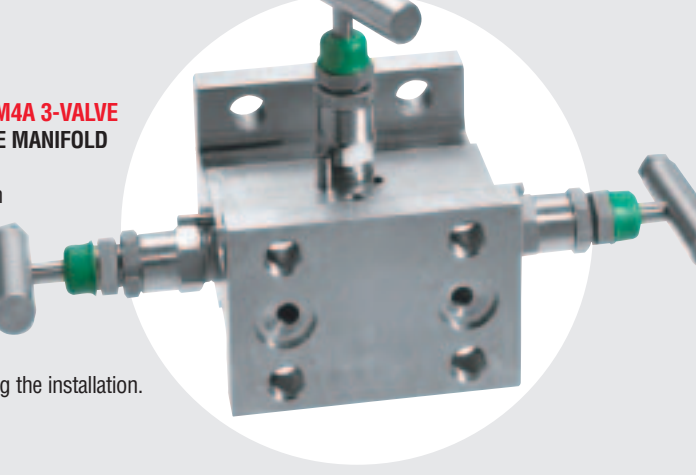
**KMC5G**  
**INTEGRAL MANIFOLD**

Designed to connect to the transmitter of specific manufacturer's models, this manifold's hardened, non-rotating ball assures exact closure every time. And for added safety a bonnet locking pin keeps the bonnet and body together.



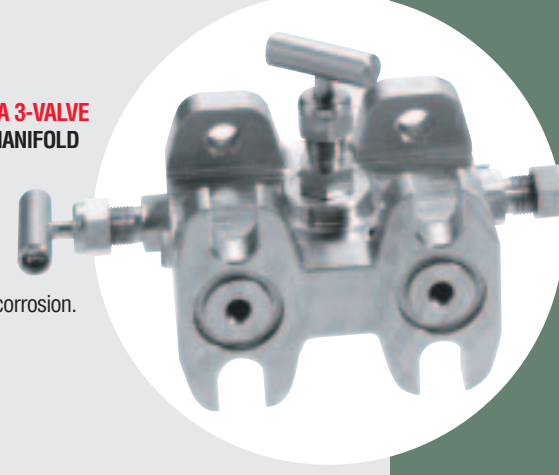
**KM4A 3-VALVE**  
**DIFFERENTIAL PRESSURE MANIFOLD**

This model features two main block valves and an equalizing valve. Along with all the standard features, this model also offers direct-to-pipestand mounting. That means complete loop installation without the transmitter, as well as instrument removal without disturbing the installation.



**KMM4A 3-VALVE**  
**DIFFERENTIAL PRESSURE MINI-MANIFOLD**

The "mini" is a low-cost, small-sized, full-featured manifold. Features include backseat stem design that prevents blowout problems and o-ring stem seal that protects stem threads from corrosion.



# A Model for Every Need

Though not pictured, the complete Kerotest Manifold product line includes the following models. Ask your Sales Representative for information on the model or models to meet your specific needs.

- KM1 3-Valve Differential Pressure Manifold
- KM1H 3-Valve Differential Pressure Manifold
- KMM1 3-Valve Differential Pressure Mini-Manifold
- KM110 3-Valve Differential Pressure Manifold
- KM4A 3-Valve Differential Pressure Manifold
- KM4T 3-Valve Differential Pressure Manifold
- KMM4A 3-Valve Differential Pressure Mini-Manifold
- KM45A 3-Valve Differential Pressure Manifold
- KM6A 5-Valve Natural Gas Manifold
- KM6T 5-Valve Natural Gas Manifold
- KM6TA 5-Valve Natural Gas Manifold
- KMC2 Integral Manifold
- KMC3 Integral Manifold
- KMT3 Integral Manifold
- KMC5G Integral Manifold
- KMC5P Integral Manifold
- KM4AP 2-Valve Static Pressure Manifold
- KM4TP 2-Valve Static Pressure Manifold
- KPTM 2-Valve Static Pressure Manifold
- KPT7 2-Valve Static Pressure Manifold
- KMP1 2-Valve Static Pressure Manifold
- KMP2 2-Valve Static Pressure Manifold
- KM25 Block and Bleed Gauge Valve
- KM251 Block and Bleed Gauge Valve
- KM9 Block and Bleed Gauge Valve
- KM4TL 2-Valve Liquid Level Manifold

# Built to Perform

The Kerotest Manifold product line incorporates proven design and the latest engineering advancements to truly deliver "performance under pressure." Every model comes to you with a full complement of the following features and benefits:

- Isolated Stem Threads. Adjustable packing below stem threads keeps process fluid away. Assures leakproof, long service life.
- Bubble-tight Shutoff.
- Space-saving Design.
- One Valve Does the Work of Many. Saves money and labor.
- Bonnet Cap Protection. Increases valve life and maintains integrity of stem threads.
- Rolled Stem Threads for Increased Strength and Life.
- No More Stem Blowouts. Backseat stem design prevents blowout problems.
- Less Parts Mean Less Leak Points.
- Quarter-inch Test Ports.
- Field Serviceable Soft Seat. Allows replacement with valve still in the line.
- Compact, Remote Mount Design. Saves space and installation costs.
- Chrome plated stem prevents freezing and galling.
- Perfect closure every time with free-swiveling ball end stem.
- Vent ports are threaded for safe, easy piping connections.
- Purge-less cleaning of impulse lines.
- Metal-to-Metal Seal Between Bonnet and Body. Maintains thread integrity, prevents bonnet breakage and assures reliable seal.
- Direct-to-Pipestand Mounting. Allows complete loop installation without the transmitter, and instrument removal without disturbing installation.
- Lightweight Construction. Installs in meter tubing without additional support.
- Quarter-inch FNPT Ports Standard. Connect static pressure to the upstream or downstream ports.
- Two-way Seat Design. Soft seat via simple insert or metal seat when no insert is used.
- One Piece Handle. No way to lose the handle from vibration or misplacement.
- Adjustable Bonnet Packing. Increases valve life and maintains integrity of stem threads.
- Ball End Stem. Hardened, non-rotating ball assures exact closure every time.
- Locking Pin Assures Safety. Bonnet lock pin keeps bonnet and body together.
- O-Ring Stem Seal Protects Stem Threads. Reduces chances of corrosion to stem threads.



SINCE 1909

*An Employee-Owned Total Quality Management Company*

**Kerotest Manufacturing Corp.**  
7734 Highway 1 • Mansura, LA 71350  
318-253-9686 • Fax: 318-253-9845  
www.kerotest.com • kerotest@kerotest.com



SINCE 1909

*An Employee-Owned Total Quality Management Company*

# MANIFOLDS

FLOW, STATIC PRESSURE, LIQUID LEVEL



**DIFFERENTIAL PRESSURE**

**NATURAL GAS**

**INTEGRAL**

**STATIC PRESSURE**

Replaceable Soft Seat  
Bubble-Tight Shutoff  
Rolled Stem Threads