

Fig. 200 - "Trimline" Adjustable Band Hanger Fig. 200R (Import) - "Trimline" Adjustable Band Hanger w/Retainer Ring



Size Range — 1/2" thru 8" pipe

Material — Carbon Steel, Mil. Galvanized to G90 specifications

Function — For fire sprinkler and other general piping purposes. Knurled swivel nut design permits hanger adjustment after installation.

Features —

- (1/2" thru 2") Flared edges ease installation for all pipe types and protect CPVC plastic pipe from abrasion. Captured design keeps adjusting nut from separating with hanger. Hanger is easily installed around pipe.
- (2½" thru 8") Spring tension on nut holds it securely in hanger before installation. Adjusting nut is easily removed.

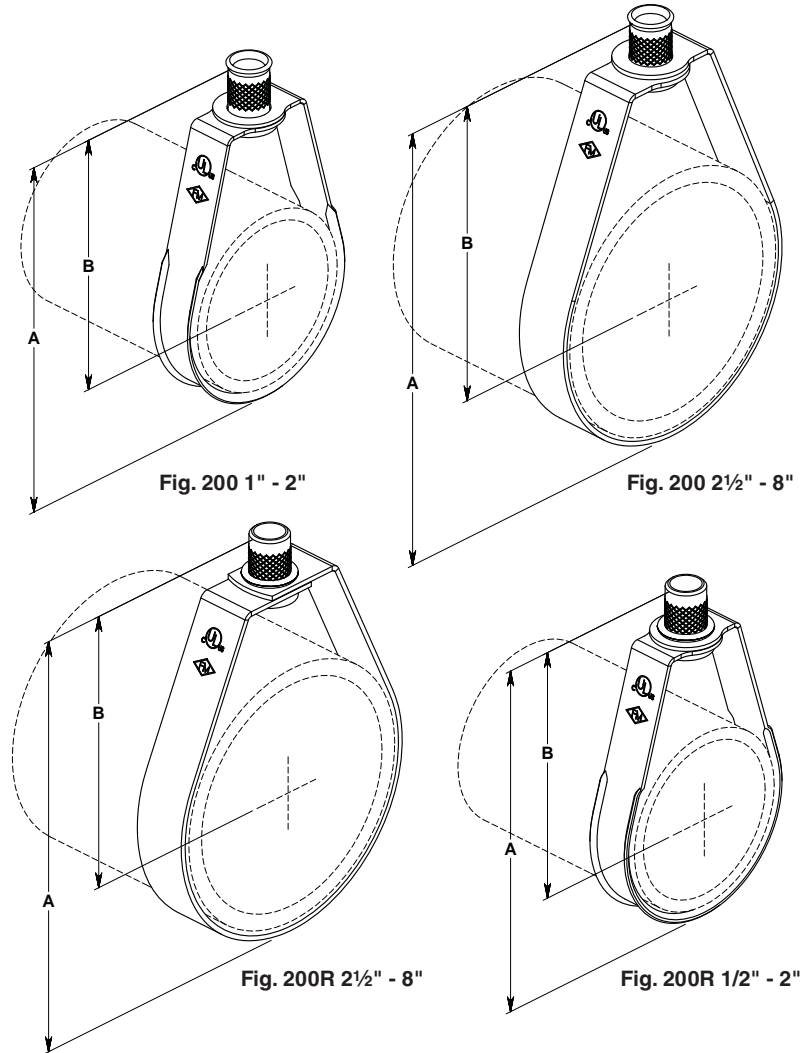
Approvals — Underwriters' Laboratories listed (1/2" thru 8") in the USA (**UL**) and Canada (**cUL**) for steel and CPVC plastic pipe and Factory Mutual Engineering Approved (3/4" thru 8"). Conforms to Federal Specifications WW-H-171E, Type 10 and Manufacturers Standardization Society SP-69, Type 10.

Maximum Temperature — 650°F

Finish — Mil. Galvanized. Stainless Steel materials will be supplied with (2) hex nuts in place of a knurled nut.

Order By — Figure number and pipe size

Note — Figure 200R (import) with retainer ring and non-captured knurled nut.



Dimensions • Weights						
Pipe Size	Rod Size		A	B	Max. Rec. Load Lbs.	Approx. Wt./100
	Inch	Metric				
1/2	3/8	8mm or 10mm	3 1/8	2 5/8	400	11
3/4	3/8	8mm or 10mm	3 1/8	2 1/2	400	11
1	3/8	8mm or 10mm	3 3/8	2 5/8	400	12
1 1/4	3/8	8mm or 10mm	3 3/4	2 7/8	400	13
1 1/2	3/8	8mm or 10mm	3 7/8	2 7/8	400	14
2	3/8	8mm or 10mm	4 1/2	3	400	15
2 1/2	3/8	10mm	5 5/8	4 1/8	600	27
3	3/8	10mm	5 7/8	4	600	29
3 1/2	3/8	10mm	7 3/8	5 1/4	600	34
4	3/8	10mm	7 3/8	5	1000	35
5	1/2	12mm	9 1/8	6 1/4	1250	66
6	1/2	12mm	10 1/8	6 3/4	1250	73
8	1/2	12mm	13 1/8	8 3/4	1250	136

Fig. 200H - Heavy Duty Band Hanger (for Trapeze)



Size Range — 2" thru 4" trapeze pipe size.
 Used to support up to 8" pipe. For 6" and 8" trapeze pipe, consult factory.

Material — Carbon Steel — Pre-Galvanized to G40 Spec

Function — Designed primarily to support substantially heavier loads than is normally intended for the nominal hanger size. Used extensively to support trapeze installations and the increased loads from **both** above and below the trapeze assembly.

Features — Furnished with 3/8" or 1/2" adjusting threaded ring nut.

Approvals — Underwriters' Laboratories listed in the USA (UL) and Canada**

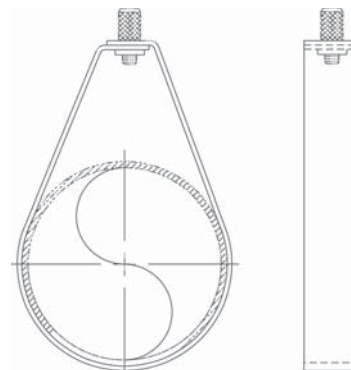
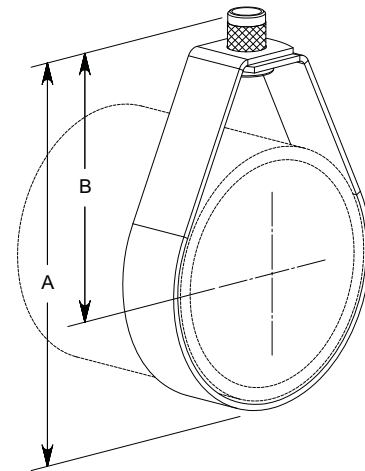
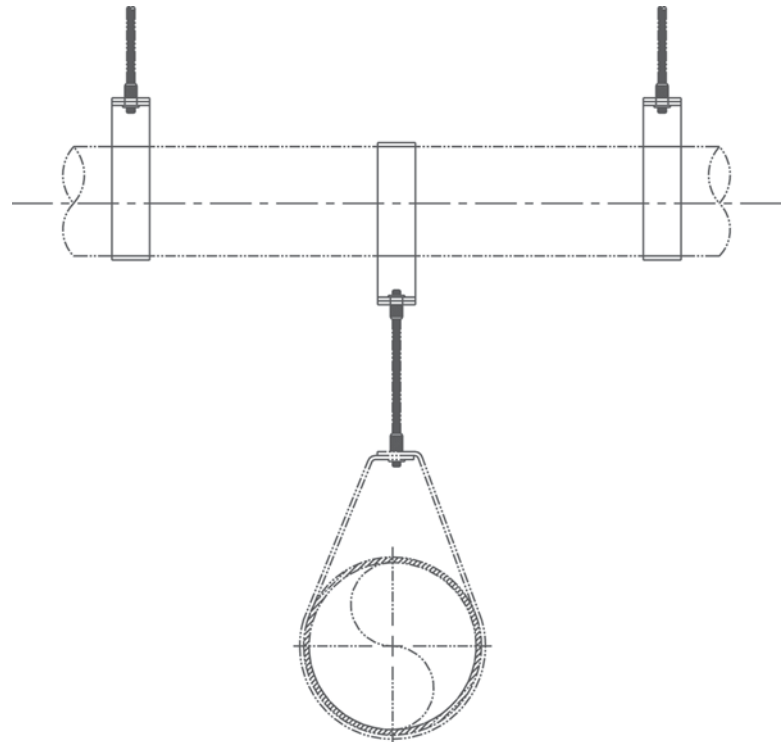
(cUL). Conforms to Federal Specification WW-H-171E, Type 10 and Manufacturers Standardization Society SP-69, Type 10.

Maximum Temperature — 650°F

Finish — Pre-Galvanized

Order By — Figure number, pipe size and rod size.

Important Design Note — Because of the increased loads applied to the trapeze assembly, **both** the upper trapeze supports as well as the lower hanging unit must be able to hold the maximum loads intended*.



Dimensions • Weights				
Trapeze Pipe Size	Rod Size	A	B	**Max. Rec. Load Lbs.
2	3/8	4 ⁹ / ₁₆	3 ⁷ / ₃₂	1250
2	1/2	4 ²³ / ₃₂	3 ³ / ₈	1250
2½	3/8	5 ⁵ / ₁₆	3 ²³ / ₃₂	1250
2½	1/2	5 ¹⁹ / ₃₂	3 ⁷ / ₈	1250
3	3/8	5 ³ / ₄	3 ²⁷ / ₃₂	1250
3	1/2	5 ⁷ / ₈	3 ³¹ / ₃₂	1250
4	3/8	6 ⁷ / ₈	4 ⁷ / ₁₆	1250
4	1/2	7 ¹ / ₃₂	4 ¹⁹ / ₃₂	1250

* Select trapeze pipe size based on section modulus required for span of trapeze per information provided in NFPA 13 (2002) Table 9.1.1.6.1 (a and b).

** All sizes are UL Listed to support up to 8" pipe at max spacing per NFPA 13.

Fig. 200WON - "Trimline" Adjustable Band Hanger w/o Swivel Nut

Size Range — 1/2" thru 8" pipe

Material — Carbon Steel

Function — Recommended for the suspension of fire sprinkler and non-insulated pipe or insulated pipe with Fig. 220 shield. Generally installed with two hex nuts.

Features — Flared edges on sizes 1/2" thru 2". Eases installation and protects CPVC pipe from any abrasion.

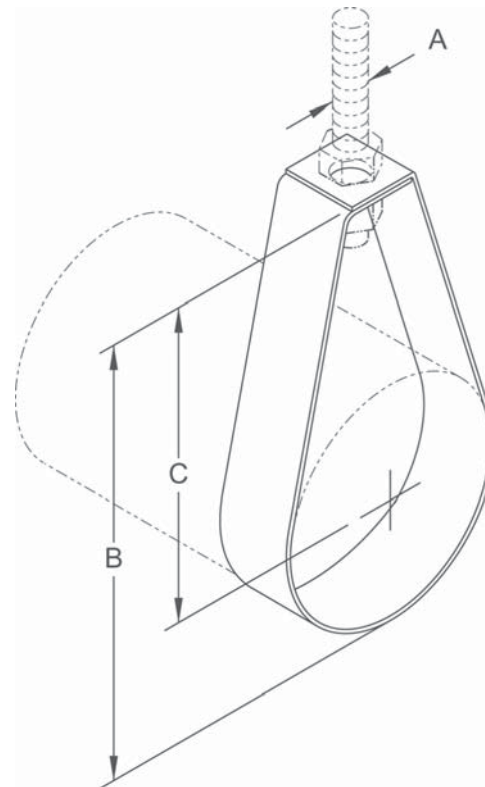
Approvals — Underwriters' Laboratories listed (1/2" thru 8") in the USA (**UL**) and Canada (**cUL**) for steel and CPVC plastic pipe. Conforms to Federal Specifications WW-171E, Type 7 and Manufacturers Standardization Society SP-69, Type 7

Maximum Temperature — 650°F

Finish — Mil. Galvanized to G-90

Note — Available in Stainless Steel materials

Order By — Figure number and pipe size



Dimensions • Weights

Pipe Size	Rod Size A	B	C	Max. Rec. Load Lbs.	Approx. Wt./100
1/2	3/8	2½	2	400	8
3/4	3/8	2½	2	400	8
1	3/8	2⅞	2⅞	400	9
1¼	3/8	3⅞	2½	400	10
1½	3/8	3½	2½	400	11
2	3/8	3¾	2½	400	12
2½	3/8	5⅞	3⅞	600	24
3	3/8	5⅞	3½	600	27
3½	3/8	6¾	4⅞	600	32
4	3/8	6¾	4½	1000	33
5	1/2	8⅞	5½	1250	60
6	1/2	9⅞	6	1250	68
8	1/2	12⅞	8	1250	130