

Models: 1011, 1012

Suction Diffusers

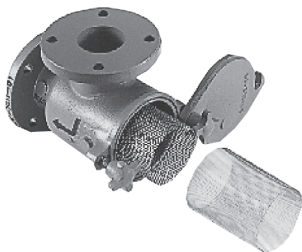
Sizes: 2" x 1¼" - 18" x 14"

Pressure/Temperature – Non-Shock		
Models	Sizes	Rating CWP
1011	2"-12"	150psi @ 150°F (10.3 bar @ 38°C) 165psi @ 300°F EPDM 110psi @ 300°F EPDM
1011	14" and Up	150psi @ 150°F (10.3 bar @ 66°C)
1012	Knob	300psi @ 100°F (21 bar @ 38°C)
1012	Bolted Cover	640psi @ 100°F (44 bar @ 38°C) 565psi @ 300°F EDPM – O-RINGS

Max. temp. can be limited by gasket material. Consult factory.

1011
1012

Class 125
Class 300



Models 1011, 1012

Mueller Steam Specialty Suction Diffusers provide economical and compact pump protection by straining foreign particles and providing proper flow conditions to the pump.

Typical Service

- Mounts directly to the suction side of a pump, in either horizontal or vertical position.

Features

- Compact design enables this one unit to act as an elbow, strainer, and entry pipe to the suction side of the pump. This reduces installation time, overall cost, and reduces joint leak paths.
- Equal size flanges or reduced outlet flange sizes available. Reduced outlet design eliminates the need for a reducing base elbow.
- Quick opening knobs allow for quick maintenance. Bolted cover is available on 1012 model.
- O-ring seal eliminates the need to clean the sealing area and install a new flat gasket in competitive models.
- Straightening vanes on the Suction Diffuser's outlet side reduces turbulence into the pump. These minimize stress and erosion within the pump, and eliminate the need for a length of straight pipe to diminish turbulence.
- Robust 5 to 1 Open Area Ratio and blow off feature extend the time between servicing and allows for ease of draining and flushing
- A separate removable fine mesh screen liner is installed in each Diffuser for start-up. After the start-up period, simply remove and discard, leaving the primary screen for operation.
- Special pads fit the I.D. of standard pipe, eliminating the need for pipe saddles and relieving stress on hanger systems.
- Gauge tapping in available as specified with the order.

Screen

MODEL	SIZES	STANDARD (WATER)	
		MATERIAL	OPENING
1011	2½" – 12"	304SS	.250 perf
1011, 1012	Up to 6"	304SS	.156 perf
1011, 1012	8" and Up	304SS	.125 perf
Sleeve		304SS	20 mesh

Materials

	1011	1012
Body and Cover	Cast Iron ASTM A126-B	Ductile Iron ASTM A536
Knobs	(2"x1¼"-8" x 8") – Ductile Iron ASTM A536	(2"x1¼"-8" x 8") – Ductile Iron ASTM A536
Nuts	(10"x10" and larger) – Carbon Steel ASTM A194-4	(10"x10" and larger) – Carbon Steel ASTM A194-4
Sleeve	20 mesh Stainless Steel	20 mesh Stainless Steel
O-Ring	EPDM	EPDM

Special metals and alloys on request.

Job Name _____

Contractor _____

Job Location _____

Approval _____

Engineer _____

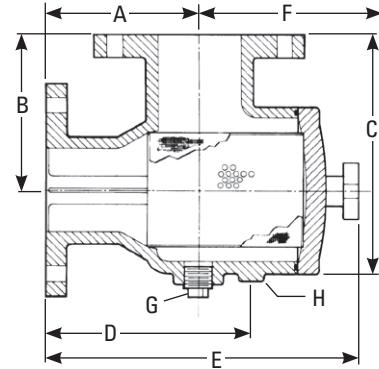
Contractor's P.O. No. _____

Approval _____

Representative _____

Dimensions and Weights

SIZE		DIMENSIONS								WEIGHT									
Inlet x Outlet		A	B	C	D	E	F	G	H										
in.	mm	in.	mm	in.	mm	in.	mm	in.	mm	in.	mm								
in.	mm	in.	mm	in.	mm	in.	mm	in.	mm	in.	mm								
1011																			
2x1¼	50x32	4½	114	4½	114	6¼	170	6⅞	156	10¾	259	8¼	224	¾	20	.824	21	19	9
2x1½	50x40	4½	114	4½	114	6¼	170	6⅞	156	10¾	259	8¼	224	¾	20	.824	21	21	10
2x2	50x50	4½	114	4½	114	6¼	170	6⅞	156	10¾	259	8¼	224	¾	20	.824	21	23	10
2½x2	65x50	5	127	5	127	7½	191	6⅞	167	10⅞	276	9⅞	232	¾	20	1.049	27	32	15
2½x2½	65x65	5	127	5	127	7½	191	6⅞	167	10⅞	276	9⅞	232	¾	20	1.049	27	34	15
3x2	80x50	5½	140	5½	140	8⅞	214	7¼	179	11⅞	294	9⅞	244	¾	20	1.049	27	45	20
3x2½	80x65	5½	140	5½	140	8⅞	214	7¼	179	11⅞	294	9⅞	244	¾	20	1.049	27	46	21
3x3	80x80	5½	140	5½	140	8⅞	214	7¼	179	11⅞	294	9⅞	244	¾	20	1.049	27	47	21
4x3	100x80	6½	165	6½	165	10¼	260	8¾	222	13⅞	333	11½	292	1	25	1.380	35	71	44
4x4	100x100	6½	165	6½	165	10¼	260	8¾	222	13⅞	333	11½	292	1	25	1.380	35	73	33
5x4	125x100	7½	191	7½	191	11½	278	10	254	15¾	400	14⅞	378	1	25	1.380	35	96	34
5x5	125x125	7½	191	7½	191	11½	278	10	254	15¾	400	14⅞	378	1	25	1.380	35	101	46
6x4	150x100	8	203	8	203	13¾	346	10½	267	16⅞	429	16⅞	421	1	25	1.380	35	132	60
6x5	150x125	8	203	8	203	13¾	346	10½	267	16⅞	429	16⅞	421	1	25	1.380	35	136	62
6x6	150x150	8	203	8	203	13¾	346	10½	267	16⅞	429	16⅞	421	1	25	1.380	35	139	63
8x6	200x150	9	229	9	229	14¾	372	11½	292	17⅞	454	16⅞	429	1	25	1.380	35	166	75
8x8	200x200	9	229	9	229	15¼	402	11¾	298	20¾	527	22⅞	581	1¼	32	1.380	35	249	113
10x8	250x200	9	229	11	279	17¼	453	11¾	298	20¾	527	22⅞	581	1¼	32	1.380	35	276	125
10x10	250x250	11	279	11	279	19¾	492	14	357	26¾	670	30¼	768	1¼	32	2.067	53	422	191
12x8	300x200	9	229	12	305	18¾	467	11¾	298	20¾	527	22⅞	581	1¼	32	1.380	35	412	187
12x10	300x250	11	279	12	305	20¾	518	14	357	26¾	670	33	838	1¼	32	2.067	53	491	223
12x12	300x300	12	305	12	305	21¼	541	15¼	387	26¾	665	28¾	730	1¼	32	2.067	53	573	260
14x10	350x250	11	279	14	356	22½	571	14	357	26¾	670	33	838	1¼	32	2.067	53	507	230
14x12	350x300	12	305	14	356	23¾	594	15¼	387	26¾	665	31	787	1¼	32	2.067	53	601	273
14x14	350x350	14	356	14	356	25	635	17½	445	28	711	33¾	841	2	51	2.067	53	706	320
16x12	400x300	12	305	15	305	24¾	619	15¼	387	26¾	665	28¾	730	1¼	32	2.067	53	660	299
16x14	400x350	14	356	15	305	26	660	17½	445	27⅞	708	31	787	2	51	2.067	53	750	340
16x16	400x400	14½	357	14½	357	24½	633	17¾	446	27⅞	706	33¾	841	2	51	2.067	53	820	372
18x12	450x300	12	305	16½	419	25⅞	657	15¼	387	25¾	644	28¾	730	1¼	32	2.067	53	—	—
1012																			
2x2	50x50	4¾	121	4¾	121	6¼	176	6⅞	162	10⅞	265	8¼	224	¾	20	.824	21	30	14
2½x2	65x50	5¼	133	5¼	135	7¼	198	6¼	173	11¼	283	9⅞	232	¾	20	1.380	35	35	16
2½x2½	65x65	5¼	135	5¼	149	7¼	198	6¼	175	11¼	284	9⅞	232	¾	20	1.380	35	39	18
3x2	80x50	5¾	146	5¾	149	8¼	224	7⅞	194	11¼	300	9⅞	244	¾	20	1.380	35	57	26
3x2½	80x65	5¾	148	5¾	149	8¼	224	7⅞	194	11¼	302	9⅞	244	¾	20	1.380	35	59	27
3x3	80x80	5¾	149	5¾	149	8¼	224	7⅞	194	11¼	303	9⅞	244	¾	20	1.380	35	63	29
4x3	100x80	6¼	162	6¼	173	10¼	265	8¼	227	13¼	354	11½	292	1	25	1.380	35	79	36
4x4	100x100	6¼	173	6¼	173	10¼	265	8¼	227	13¼	341	11½	292	1	25	1.380	35	86	39
6x4	150x100	8¼	211	8¼	216	13¼	351	10¼	275	17¼	437	16⅞	421	1	25	1.380	35	161	73
6x5	150x125	8¼	214	8¼	216	13¼	351	10¼	278	17¼	440	16⅞	421	1	25	1.380	35	165	75
6x6	150x150	8¼	214	8¼	216	13¼	351	10¼	278	17¼	440	16⅞	421	1	25	1.380	35	168	76
8x6	200x150	9¼	240	10	720	15¼	389	11¼	303	18¼	465	16⅞	429	1	25	1.380	35	216	98
8x8	200x200	9¼	241	10	720	16¼	425	12¼	313	21¼	541	22⅞	581	1¼	32	1.380	35	317	144
10x8	250x200	9¼	241	11¾	298	18¼	468	12¼	313	21¼	541	22⅞	581	1¼	32	1.380	35	358	163
10x10	250x250	11¾	298	11¾	298	20	508	14¾	375	27¼	689	30¼	768	1¼	32	1.380	35	473	215
12x10	300x250	11¾	298	12¼	327	21¼	537	14¾	375	27¼	689	33	838	1¼	32	1.380	35	524	237



Models 1011, 1012

Mueller Steam Specialty product specifications in U.S. customary units and metric are approximate and are provided for reference only. For precise measurements, please contact Mueller Steam Specialty Technical Service. Mueller Steam Specialty reserves the right to change or modify product design, construction, specifications, or materials without prior notice and without incurring any obligation to make such changes and modifications on Mueller Steam Specialty products previously or subsequently sold.

