

Fig. 62 - Center Load Beam Clamp

Material — Carbon Steel

Function — Recommended for the suspending of hanger rod from the center of an I-beam, equally distributing the load on both sides of the beam. Use with Fig. 102 Eye Rod, Fig. 101 Welded Eye Rod or Fig. 330 Weldless Eye Nut.

Approvals — Conforms to Federal Specification WW-H-171E, Type 21, and Manufacturers Standardization Society SP-58, Type 21.

Finish — Plain

Note — Available in Electro-Galvanized and HDG finish or Stainless Steel materials.

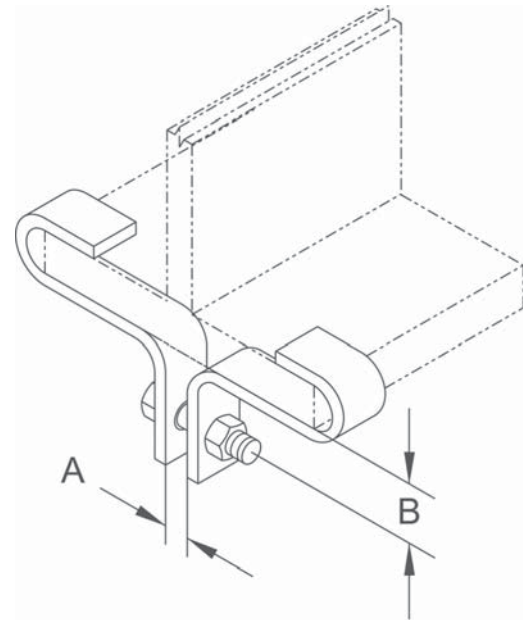
Order By — Figure number, type, width of flange and finish.

Dimensions				
Type	A	B*	Bolt Size	Max. Rec. Load Lbs.
1	1/2	1 ³ / ₈	3/8	1000
2	1/2	1 ³ / ₈	1/2	1250
3	5/8	1 ⁹ / ₁₆	1/2	1500
4	3/4	2 ¹ / ₄	5/8	3000
5	3/4	2 ¹ / ₄	5/8	3250
6	3/4	2 ⁹ / ₁₆	3/4	3500

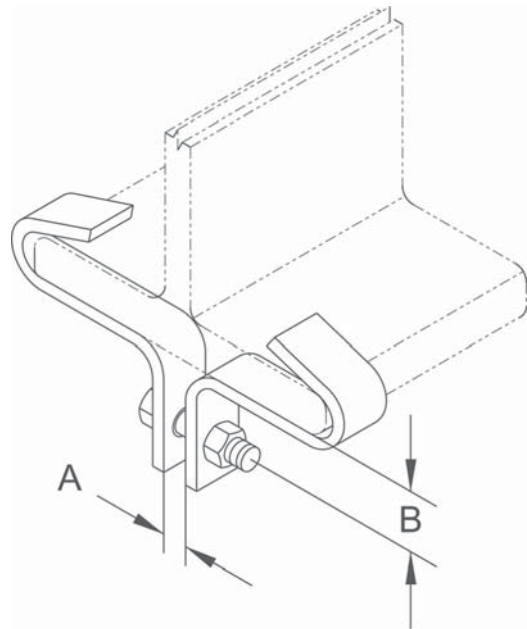
* Not applicable for type 1 — 2" and type 3 — 2" flange widths.

Dimensions • Weights							
Flange Width	Max. Flange Thickness	Approx. Wt./100					
		Type 1	Type 2	Type 3	Type 4	Type 5	Type 6
2	7/16	66	85	—	—	—	—
3	1/2*	75	95	151	355*	—	—
4	1/2	91	114	163	382	470	634
5	5/8	100	125	187	435	536	667
6	3/4	115	143	216	452	558	728
7	7/8	129	16	242	484	606	767
8	7/8	144	177	267	510	659	861
9	1	159	196	295	583	721	913
10	1	172	210	319	625	773	982
11	1	185	227	343	667	826	1048
12	1	198	243	367	709	879	1115

* Maximum flange thickness type 1, 2 and 3 = 7/16"



Types 1 thru 4



Types 5 and 6