

## Fig. 317 - Pipe Saddle

**Size Range** — 1½" thru 36" pipe

**Material** — Carbon Steel

**Function** — Designed to support horizontal pipe from floor stanchion. To complete floor stanchion, use with Fig. 316 Stand Pipe. For complete floor stanchion with vertical adjustment, use Fig. 319 Threaded Pipe with Adjuster and Fig. 316T Threaded Stand Pipe.

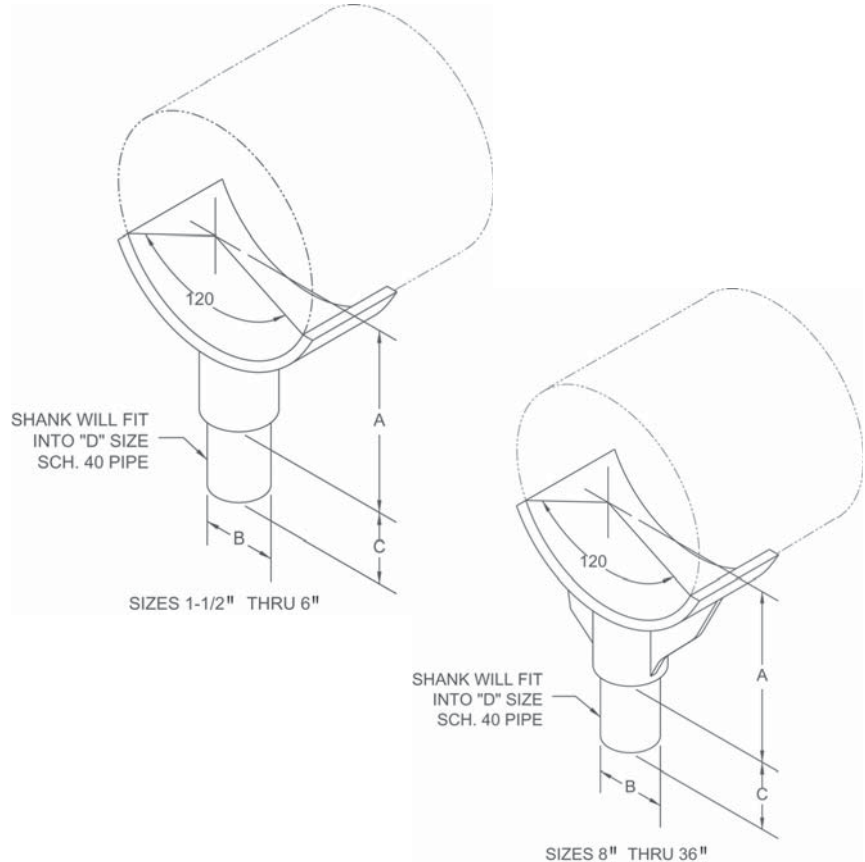
**Approvals** — Conforms to Federal Specification WW-H-171E, Type 37, 4" thru 36", and Manufacturers Standardization Society SP-69, Type 36

**Maximum Temperature** — 750°F

**Finish** — Plain

**Note** — Available in Electro-Galvanized and HDG finish or Stainless Steel materials.

**Order By** — Figure number, pipe size and finish



Dimensions • Weights						
Pipe Size	Max. O.D. Pipe	A	B	C	D	Approx. Wt./100
1½	2	2¼	1*	2	1	127
2	2¾	27/16	1*	2	1	131
2½	27/8	211/16	1½*	2	1½	149
3	3½	3	1½*	2	1½	162
3½	4	3¼	1½*	2	1½	178
4	47/8	313/16	2¾	3	2½	455
5	55/8	49/16	2¾	3	2½	489
6	7	47/8	2¾	3	2½	550
8	9½	615/16	2¾	4	2½	790
10	11½	715/16	2¾	4	2½	872
12	13½	9½	2¾	4	2½	1007
14	14	10½	27/8	4	3	1541
16	16	11½	27/8	4	3	1680
18	18	13½	3¾	4	4	2220
20	20	14½	3¾	4	4	2415
22	22	15½	3¾	4	4	2600
24	24	17½	3¾	4	4	2970
26	26	18½	3¾	4	4	3172
30	30	205/8	3¾	4	4	4047
32	32	215/8	3¾	4	4	4230
36	36	235/8	3¾	4	4	4608

\* For pipe sizes 1½" thru 3½", a rod shank is used.

## Fig. 317A - Pipe Saddle and Threaded Pipe Adjuster

**Size Range** — 2½" thru 36" pipe

**Material** — Carbon Steel with cast iron reducer

**Function** — Designed to support horizontal pipe from floor stanchion where vertical adjustment is required. To complete floor stanchion, use with Fig. 316T Threaded Pipe Stand.

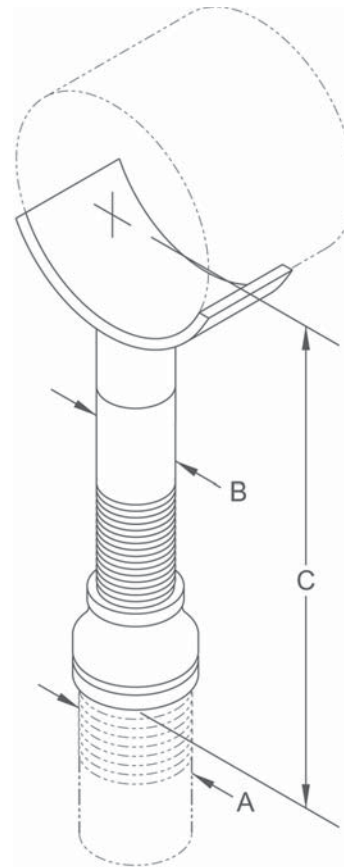
**Approvals** — Conforms to Federal Specification WW-H-171E, Type 39, 4" thru 36", and Manufacturers Standardization Society SP-69, Type 38

**Finish** — Plain

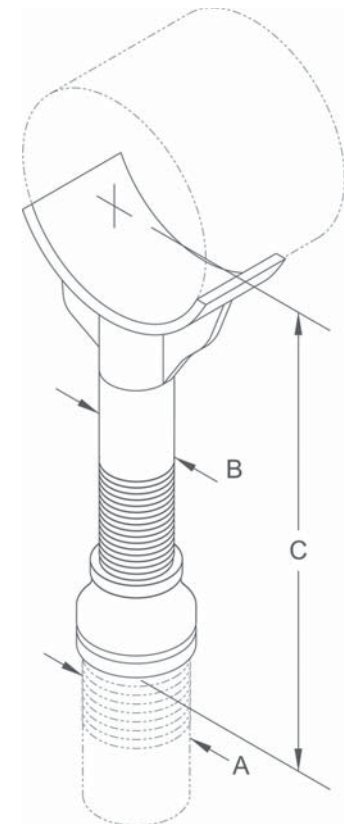
**Note** — Available in Electro-Galvanized and HDG finish or Stainless Steel materials.

**Order By** — Figure number, pipe size, adjuster size and finish

**Note** — Order with TOLCO® Fig. 316T for complete stanchion support



SIZES 2-1/2" THRU 6"



SIZES 8" THRU 36"

### Dimensions • Weights

Pipe Size	A Stand Pipe Size	B Adj. Pipe Size	C Min.	C Max.	Approx. Wt./100
2½	2	1½	7	11½	453
3	2	1½	7 <sup>5</sup> / <sub>16</sub>	11 <sup>13</sup> / <sub>16</sub>	466
3½	2	1½	7 <sup>9</sup> / <sub>16</sub>	12 <sup>1</sup> / <sub>16</sub>	482
4	3	2½	10¼	14¾	1248
5	3	2½	11 <sup>1</sup> / <sub>16</sub>	15 <sup>9</sup> / <sub>16</sub>	1282
6	3	2½	11 <sup>9</sup> / <sub>16</sub>	16 <sup>1</sup> / <sub>16</sub>	1343
8	3	2½	13 <sup>9</sup> / <sub>16</sub>	18 <sup>1</sup> / <sub>16</sub>	1583
10	3	2½	14 <sup>9</sup> / <sub>8</sub>	19 <sup>1</sup> / <sub>8</sub>	1665
12	3	2½	15 <sup>5</sup> / <sub>8</sub>	20 <sup>1</sup> / <sub>8</sub>	1800
14	4	3	18 <sup>7</sup> / <sub>8</sub>	23 <sup>3</sup> / <sub>8</sub>	2761
16	4	3	19 <sup>7</sup> / <sub>8</sub>	24 <sup>3</sup> / <sub>8</sub>	2900
18	6	4	22¼	26¾	4468
20	6	4	23¼	27¾	4663
22	6	4	24¼	28¾	4848
24	6	4	26½	31	5218
26	6	4	27½	32	5420
30	6	4	29 <sup>5</sup> / <sub>8</sub>	34 <sup>1</sup> / <sub>8</sub>	6295
32	6	4	30 <sup>5</sup> / <sub>8</sub>	35 <sup>1</sup> / <sub>8</sub>	6478
36	6	4	32 <sup>5</sup> / <sub>8</sub>	37 <sup>1</sup> / <sub>8</sub>	6856