

## Cable entry plate KDP Metal





# Cable entry plate KDP Metal

## Advantages



## Fits in even confined spaces

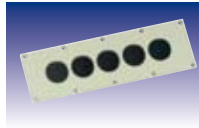
The metal cable entry plate is, like the plastic version, an ideal alternative to cable fittings. Cables can be installed in seconds, even in highly confined spaces. Aluminum and stainless steel versions offer a broad range of applications. Stainless steel version particularly suited for foodstuffs and chemical industries. Quick installation of up to 292 cables even while saving up to 50% of space – thereby reducing costs as well.



- ✓ High packing density
- ✓ Quick installation
- ✓ High IP protection class
- ✓ Low installation height
- ✓ Fits Rittal enclosures.

## Overview

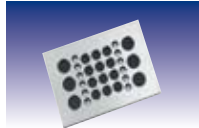
Page 136



### Cable entry plate Product group 90

KDP made of aluminum and stainless steel. Dimensions correspond partially to Rittal flange plates size 2.

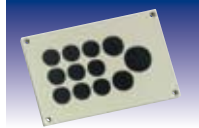
Page 142



### Cable entry plate Product group 100

KDP made of aluminum and stainless steel. Various types with different hole patterns.

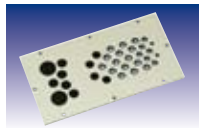
Page 148



### Cable entry plate Product group 105

KDP made of aluminum and stainless steel. Various types with different hole patterns.

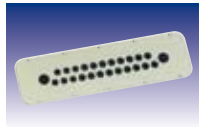
Page 151



### Cable entry plate Product group 134

Cable entry system made of aluminum.

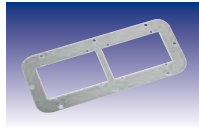
Page 152



### Cable entry plate Product group 149

KDP made of aluminum and stainless steel. Dimensions correspond to Rittal flange plates size 4 and 5.

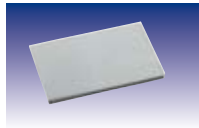
Page 158



### Adapter plate

Adapter plates for accepting cable entry systems from the 100 and 105 product groups. Dimensions correspond to Rittal flange plates size 4 and 5.

Page 161



### Blanking plate

Blanking plates made of aluminum and stainless steel. For sealing unused cut-outs.





# Cable entry plate KDP Metal

## Selection table

Cable diameter in inch	Type																						
	KDP 90/5 ALU	KDP 90/8 ALU	KDP 90/25 ALU	KDP 90/28 ALU and V4A	KDP 90/39+3 ALU and V4A	KDP 90/55 V4A	KDP 100/30 V4A	KDP 100/30B V4A	KDP 100/40 V4A	KDP 100/56 V4A	KDP 100/56B V4A	KDP 100/56C V4A	KDP 105/12 ALU	KDP 105/15 ALU and V4A	KDP 105/32 ALU and V4A	KDP 134/34 ALU	KDP 149/25 ALU	KDP 149/46 ALU	KDP 149/56 V4A	KDP 149/140 V4A	KDP 149/158 V4A	KDP 149/292 V4A	
0.04 - 0.14											48	48											
0.12 - 0.20			9			3									16	2							
0.12 - 0.24					24																		
0.12 - 0.24						32																	
0.14 - 0.24							12	12		48											16	126	250
0.14 - 0.26											8	4											
0.16 - 0.31			16	14	12	16									12	6							
0.18 - 0.33									40												64		
0.24 - 0.39				10			12	12		8	4		8	4	15		8	36	36	24	32		
0.24 - 0.47																6							
0.31 - 0.47					3	4										4				4	6	8	
0.35 - 0.55				2			6	4					9	4	5			8	8				
0.39 - 0.55																	16						
0.47 - 0.71				2				2					2	3		17	18				2	2	
0.55 - 0.71																		8	8				
0.55 - 0.79																2							
0.63 - 1.10	5	8																					
0.71 - 0.98													1				2	4	4	4			
Pre-fabricated conduits Max. connector size 1.89 x 0.94 inch (48 x 24 mm)	0.24				1																		
	0.33				2																		
<b>Total count Openings</b>	<b>5</b>	<b>8</b>	<b>25</b>	<b>28</b>	<b>42</b>	<b>55</b>	<b>30</b>	<b>30</b>	<b>40</b>	<b>56</b>	<b>56</b>	<b>56</b>	<b>12</b>	<b>15</b>	<b>32</b>	<b>34</b>	<b>25</b>	<b>46</b>	<b>56</b>	<b>140</b>	<b>158</b>	<b>292</b>	

## Selection table/Rittal housings

Rittal housing			Cable entry systems for Rittal enclosures																																
			87663029	87663026	87663022	87663032	87663034	87663036	87663038	87663058	87663062	87663063	87663061	87663060	87663065	87663067	87663090	87663080	87663082	87663056	87663014	87663016	87663010	87663012	87663092	87663094	87663084	87663024	87663040	87663064	87663086	87663088	87663068	87663066	
Number	Type	Cut-outs	KDP 90/5 ALU	KDP 90/8 ALU	KDP 90/25 ALU	KDP 90/28 ALU	KDP 90/28 V4A	KDP 90/39+3 ALU	KDP 90/39+3 V4A	KDP 90/55 V4A	KDP 100/30 V4A	KDP 100/30B V4A	KDP 100/40 V4A	KDP 100/56 V4A	KDP 100/56B V4A	KDP 100/56C V4A	KDP BP 100/145 V4A	KDP AP 149/100/2 V4A	KDP AP 149/100/3 V4A	KDP 105/12 ALU	KDP 105/15 ALU	KDP 105/15 V4A	KDP 105/32 ALU	KDP 105/32 V4A	KDP BP 105/55 ALU	KDP BP 105/55 V4A	KDP AP 149/105/3 St.	KDP 134/34 ALU	KDP 149/25 ALU	KDP 149/46 ALU	KDP 149/56 V4A	KDP 149/140 V4A	KDP 149/158 V4A	KDP 149/292 V4A	
1039.500	AE	5	-	-	-	-	-	-	-	-	O	O	O	O	O	O	O	-	X	O	O	O	O	O	O	O	X	-	X	X	-	X	-	X	
1045.500	AE	4	-	-	-	-	-	-	-	-	O	O	O	O	O	O	O	X	-	-	-	-	-	-	-	-	-	-	-	-	X	-	X	-	
1050.500	AE	4	-	-	-	-	-	-	-	-	O	O	O	O	O	O	O	X	-	-	-	-	-	-	-	-	-	-	-	-	X	-	X	-	
1057.500	AE	4	-	-	-	-	-	-	-	-	O	O	O	O	O	O	O	X	-	-	-	-	-	-	-	-	-	-	-	-	X	-	X	-	
1058.500	AE	5	-	-	-	-	-	-	-	-	O	O	O	O	O	O	O	-	X	O	O	O	O	O	O	O	O	X	-	X	X	-	X	-	X
1060.500	AE	5	-	-	-	-	-	-	-	-	O	O	O	O	O	O	O	-	X	O	O	O	O	O	O	O	O	X	-	X	X	-	X	-	X
1073.500	AE	5	-	-	-	-	-	-	-	-	O	O	O	O	O	O	O	-	X	O	O	O	O	O	O	O	O	X	-	X	X	-	X	-	X
1076.290	IN	5	-	-	-	-	-	-	-	-	O	O	O	O	O	O	O	-	X	O	O	O	O	O	O	O	O	X	-	X	X	-	X	-	X
1076.500	AE	5	-	-	-	-	-	-	-	-	O	O	O	O	O	O	O	-	X	O	O	O	O	O	O	O	O	X	-	X	X	-	X	-	X
1077.500	AE	5	-	-	-	-	-	-	-	-	O	O	O	O	O	O	O	-	X	O	O	O	O	O	O	O	O	X	-	X	X	-	X	-	X
1090.500	AE	5	-	-	-	-	-	-	-	-	O	O	O	O	O	O	O	-	X	O	O	O	O	O	O	O	O	X	-	X	X	-	X	-	X
1100.500	AE	4	-	-	-	-	-	-	-	-	O	O	O	O	O	O	O	X	-	-	-	-	-	-	-	-	-	-	-	-	X	-	X	-	
1110.500	AE	4	-	-	-	-	-	-	-	-	O	O	O	O	O	O	O	X	-	-	-	-	-	-	-	-	-	-	-	-	X	-	X	-	
1114.500	AE	4	-	-	-	-	-	-	-	-	O	O	O	O	O	O	O	X	-	-	-	-	-	-	-	-	-	-	-	-	X	-	X	-	
1130.500	AE	4	-	-	-	-	-	-	-	-	O	O	O	O	O	O	O	X	-	-	-	-	-	-	-	-	-	-	-	-	X	-	X	-	
1180.500	AE	5	-	-	-	-	-	-	-	-	O	O	O	O	O	O	O	-	X	O	O	O	O	O	O	O	O	X	-	X	X	-	X	-	X
1213.500	AE	4	-	-	-	-	-	-	-	-	O	O	O	O	O	O	O	X	-	-	-	-	-	-	-	-	-	-	-	-	X	-	X	-	
1260.500	AE	5	-	-	-	-	-	-	-	-	O	O	O	O	O	O	O	-	X	O	O	O	O	O	O	O	O	X	-	X	X	-	X	-	X
1280.500	AE	5	-	-	-	-	-	-	-	-	O	O	O	O	O	O	O	-	X	O	O	O	O	O	O	O	O	X	-	X	X	-	X	-	X
1338.500	AE	4	-	-	-	-	-	-	-	-	O	O	O	O	O	O	O	X	-	-	-	-	-	-	-	-	-	-	-	-	X	-	X	-	
1339.500	AE	5	-	-	-	-	-	-	-	-	O	O	O	O	O	O	O	-	X	O	O	O	O	O	O	O	O	X	-	X	X	-	X	-	X
1350.500	AE	4	-	-	-	-	-	-	-	-	O	O	O	O	O	O	O	X	-	-	-	-	-	-	-	-	-	-	-	-	X	-	X	-	
1360.500	AE	5	-	-	-	-	-	-	-	-	O	O	O	O	O	O	O	-	X	O	O	O	O	O	O	O	O	X	-	X	X	-	X	-	X
1376.500	AE	5	-	-	-	-	-	-	-	-	O	O	O	O	O	O	O	-	X	O	O	O	O	O	O	O	O	X	-	X	X	-	X	-	X
1530.510	KL	2	-	-	-	X	X	X	X	X	-	-	-	-	-	-	-	-	-	-	-	-	-	-	-	-	-	-	-	-	-	-	-	-	
1531.510	KL	2	-	-	-	X	X	X	X	X	-	-	-	-	-	-	-	-	-	-	-	-	-	-	-	-	-	-	-	-	-	-	-	-	
1532.510	KL	2	-	-	-	X	X	X	X	X	-	-	-	-	-	-	-	-	-	-	-	-	-	-	-	-	-	-	-	-	-	-	-	-	
1533.510	KL	2	-	-	-	X	X	X	X	X	-	-	-	-	-	-	-	-	-	-	-	-	-	-	-	-	-	-	-	-	-	-	-	-	
1534.510	KL	2	-	-	-	X	X	X	X	X	-	-	-	-	-	-	-	-	-	-	-	-	-	-	-	-	-	-	-	-	-	-	-	-	
1535.510	KL	2	-	-	-	X	X	X	X	X	-	-	-	-	-	-	-	-	-	-	-	-	-	-	-	-	-	-	-	-	-	-	-	-	
1536.510	KL	2	-	-	-	X	X	X	X	X	-	-	-	-	-	-	-	-	-	-	-	-	-	-	-	-	-	-	-	-	-	-	-	-	
1537.510	KL	2	-	-	-	X	X	X	X	X	-	-	-	-	-	-	-	-	-	-	-	-	-	-	-	-	-	-	-	-	-	-	-	-	
1538.510	KL	2	-	-	-	X	X	X	X	X	-	-	-	-	-	-	-	-	-	-	-	-	-	-	-	-	-	-	-	-	-	-	-	-	
1539.510	KL	2	-	-	-	X	X	X	X	X	-	-	-	-	-	-	-	-	-	-	-	-	-	-	-	-	-	-	-	-	-	-	-	-	
1540.510	KL	2	-	-	-	X	X	X	X	X	-	-	-	-	-	-	-	-	-	-	-	-	-	-	-	-	-	-	-	-	-	-	-	-	
1541.510	KL	2	-	-	-	X	X	X	X	X	-	-	-	-	-	-	-	-	-	-	-	-	-	-	-	-	-	-	-	-	-	-	-	-	
1542.510	KL	2	-	-	-	X	X	X	X	X	-	-	-	-	-	-	-	-	-	-	-	-	-	-	-	-	-	-	-	-	-	-	-	-	

- X can be directly fitted into the casing
- O fits in the enclosure via an adapter plate
- cannot be combined



# Cable entry plate KDP Metal

## Selection table/Rittal housings

Rittal housing				Cable entry systems for Rittal enclosures																																										
Number	Type	Cut-outs	Cable entry systems for Rittal enclosures																																											
			87663029	87663026	87663022	87663032	87663034	87663036	87663038	87663058	87663062	87663063	87663061	87663060	87663065	87663067	87663090	87663080	87663082	87663056	87663014	87663016	87663010	87663012	87663092	87663094	87663084	87663024	87663040	87663064	87663086	87663088	87663068	87663066												
1919.500	EL	5	-	-	-	-	-	-	-	-	-	O	O	O	O	O	O	O	O	O	O	O	O	O	O	O	O	O	X	O	O	O	O	O	O	O	X	-	X	X	-	X	-	X		
1920.500	EL	5	-	-	-	-	-	-	-	-	-	O	O	O	O	O	O	O	O	O	O	O	O	O	O	O	O	O	O	X	O	O	O	O	O	O	O	X	-	X	X	-	X	-	X	
1926.500	EL	5	-	-	-	-	-	-	-	-	-	O	O	O	O	O	O	O	O	O	O	O	O	O	O	O	O	O	O	X	O	O	O	O	O	O	O	X	-	X	X	-	X	-	X	
6214.xx0	CP	2	-	-	-	X	X	X	X	X	-	-	-	-	-	-	-	-	-	-	-	-	-	-	-	-	-	-	-	-	-	-	-	-	-	-	-	-	-	-	-	-	-			
6220.xx0	CP	2	-	-	-	X	X	X	X	X	-	-	-	-	-	-	-	-	-	-	-	-	-	-	-	-	-	-	-	-	-	-	-	-	-	-	-	-	-	-	-	-	-	-		
6900.xxx	IW	2	-	-	-	X	X	X	X	X	-	-	-	-	-	-	-	-	-	-	-	-	-	-	-	-	-	-	-	-	-	-	-	-	-	-	-	-	-	-	-	-	-	-		
6901.xxx	IW	2	-	-	-	X	X	X	X	X	-	-	-	-	-	-	-	-	-	-	-	-	-	-	-	-	-	-	-	-	-	-	-	-	-	-	-	-	-	-	-	-	-	-	-	
7011.535	DK	5	-	-	-	-	-	-	-	-	O	O	O	O	O	O	O	O	O	O	O	O	O	O	O	O	O	O	X	O	O	O	O	O	O	O	X	-	X	X	-	X	-	X		
7012.535	DK	5	-	-	-	-	-	-	-	-	O	O	O	O	O	O	O	O	O	O	O	O	O	O	O	O	O	O	X	O	O	O	O	O	O	O	X	-	X	X	-	X	-	X		
7013.535	DK	5	-	-	-	-	-	-	-	-	O	O	O	O	O	O	O	O	O	O	O	O	O	O	O	O	O	O	X	O	O	O	O	O	O	O	X	-	X	X	-	X	-	X		
7014.535	DK	5	-	-	-	-	-	-	-	-	O	O	O	O	O	O	O	O	O	O	O	O	O	O	O	O	O	O	X	O	O	O	O	O	O	O	X	-	X	X	-	X	-	X		
7454.xxx	DK	2	-	-	-	X	X	X	X	X	-	-	-	-	-	-	-	-	-	-	-	-	-	-	-	-	-	-	-	-	-	-	-	-	-	-	-	-	-	-	-	-	-	-	-	
7641.000	DK	5	-	-	-	-	-	-	-	-	O	O	O	O	O	O	O	O	O	O	O	O	O	O	O	O	O	O	X	O	O	O	O	O	O	O	X	-	X	X	-	X	-	X		
7643.000	DK	5	-	-	-	-	-	-	-	-	O	O	O	O	O	O	O	O	O	O	O	O	O	O	O	O	O	O	X	O	O	O	O	O	O	O	X	-	X	X	-	X	-	X		
7644.000	DK	5	-	-	-	-	-	-	-	-	O	O	O	O	O	O	O	O	O	O	O	O	O	O	O	O	O	O	X	O	O	O	O	O	O	O	X	-	X	X	-	X	-	X		
7645.000	DK	5	-	-	-	-	-	-	-	-	O	O	O	O	O	O	O	O	O	O	O	O	O	O	O	O	O	O	X	O	O	O	O	O	O	O	X	-	X	X	-	X	-	X		
9665.815	SV	4	-	-	-	-	-	-	-	-	O	O	O	O	O	O	O	O	O	O	O	O	O	O	O	O	O	X	-	-	-	-	-	-	-	-	-	-	-	-	-	X	-	X	-	
9665.825	SV	5	-	-	-	-	-	-	-	-	O	O	O	O	O	O	O	O	O	O	O	O	O	O	O	O	O	X	-	-	-	-	-	-	-	-	-	-	-	-	-	X	-	X	-	X
9665.835	SV	5	-	-	-	-	-	-	-	-	O	O	O	O	O	O	O	O	O	O	O	O	O	O	O	O	O	X	-	-	-	-	-	-	-	-	-	-	-	-	-	X	-	X	-	X
9665.845	SV	5	-	-	-	-	-	-	-	-	O	O	O	O	O	O	O	O	O	O	O	O	O	O	O	O	O	X	-	-	-	-	-	-	-	-	-	-	-	-	-	X	-	X	-	X
9665.855	SV	4	-	-	-	-	-	-	-	-	O	O	O	O	O	O	O	O	O	O	O	O	O	O	O	O	O	X	-	-	-	-	-	-	-	-	-	-	-	-	-	X	-	X	-	
9751.125	CS	4	-	-	-	-	-	-	-	-	O	O	O	O	O	O	O	O	O	O	O	O	O	O	O	O	X	-	-	-	-	-	-	-	-	-	-	-	-	-	-	X	-	X	-	
9751.145	CS	4	-	-	-	-	-	-	-	-	O	O	O	O	O	O	O	O	O	O	O	O	O	O	O	O	X	-	-	-	-	-	-	-	-	-	-	-	-	-	-	X	-	X	-	
9751.165	CS	4	-	-	-	-	-	-	-	-	O	O	O	O	O	O	O	O	O	O	O	O	O	O	O	O	X	-	-	-	-	-	-	-	-	-	-	-	-	-	-	X	-	X	-	
9752.125	CS	4	-	-	-	-	-	-	-	-	O	O	O	O	O	O	O	O	O	O	O	O	O	O	O	O	X	-	-	-	-	-	-	-	-	-	-	-	-	-	-	X	-	X	-	
9771.111	CS	4	-	-	-	-	-	-	-	-	O	O	O	O	O	O	O	O	O	O	O	O	O	O	O	O	X	-	-	-	-	-	-	-	-	-	-	-	-	-	-	X	-	X	-	
9771.115	CS	4	-	-	-	-	-	-	-	-	O	O	O	O	O	O	O	O	O	O	O	O	O	O	O	O	X	-	-	-	-	-	-	-	-	-	-	-	-	-	-	X	-	X	-	
9772.111	CS	4	-	-	-	-	-	-	-	-	O	O	O	O	O	O	O	O	O	O	O	O	O	O	O	O	X	-	-	-	-	-	-	-	-	-	-	-	-	-	-	X	-	X	-	
9772.111	CS	5	-	-	-	-	-	-	-	-	O	O	O	O	O	O	O	O	O	O	O	O	O	O	O	O	X	-	-	-	-	-	-	-	-	-	-	-	-	-	-	X	-	X	-	
9772.115	CS	4	-	-	-	-	-	-	-	-	O	O	O	O	O	O	O	O	O	O	O	O	O	O	O	O	X	-	-	-	-	-	-	-	-	-	-	-	-	-	-	X	-	X	-	
9772.115	CS	5	-	-	-	-	-	-	-	-	O	O	O	O	O	O	O	O	O	O	O	O	O	O	O	O	X	-	-	-	-	-	-	-	-	-	-	-	-	-	-	X	-	X	-	
9774.200	CS	4	-	-	-	-	-	-	-	-	O	O	O	O	O	O	O	O	O	O	O	O	O	O	O	O	X	-	-	-	-	-	-	-	-	-	-	-	-	-	-	X	-	X	-	
9774.210	CS	4	-	-	-	-	-	-	-	-	O	O	O	O	O	O	O	O	O	O	O	O	O	O	O	O	X	-	-	-	-	-	-	-	-	-	-	-	-	-	-	X	-	X	-	
9774.250	CS	4	-	-	-	-	-	-	-	-	O	O	O	O	O	O	O	O	O	O	O	O	O	O	O	O	X	-	-	-	-	-	-	-	-	-	-	-	-	-	-	X	-	X	-	
9774.400	CS	4	-	-	-	-	-	-	-	-	O	O	O	O	O	O	O	O	O	O	O	O	O	O	O	O	X	-	-	-	-	-	-	-	-	-	-	-	-	-	-	X	-	X	-	
9774.410	CS	4	-	-	-	-	-	-	-	-	O	O	O	O	O	O	O	O	O	O	O	O	O	O	O	O	X	-	-	-	-	-	-	-	-	-	-	-	-	-	-	X	-	X	-	
9774.450	CS	4	-	-	-	-	-	-	-	-	O	O	O	O	O	O	O	O	O	O	O	O	O	O	O	O	X	-	-	-	-	-	-	-	-	-	-	-	-	-	-	X	-	X	-	
9775.100	CS	4	-	-	-	-	-	-	-	-	O	O	O	O	O	O	O	O	O	O	O	O	O	O	O	O	X	-	-	-	-	-	-	-	-	-	-	-	-	-	-	X	-	X	-	
9775.200	CS	4	-	-	-	-	-	-	-	-	O	O	O	O	O	O	O	O	O	O	O	O	O	O	O	O	X	-	-	-	-	-	-	-	-	-	-	-	-	-	-	X	-	X	-	
9775.300	CS	4	-	-	-	-	-	-	-	-	O	O	O	O	O	O	O	O	O	O	O	O	O	O	O	O	X	-	-	-	-	-	-	-	-	-	-	-	-	-	-	X	-	X	-	
9775.400	CS	4	-	-	-	-	-	-	-	-	O	O	O	O	O	O	O	O	O	O	O	O	O	O	O	O	X	-	-	-	-	-	-	-	-	-	-	-	-	-	-	X	-	X	-	

X can be directly fitted into the casing  
 O fits in the enclosure via an adapter plate  
 - cannot be combined

## Selection Table/ Ensto housings

Ensto housing		Cable entry systems for Ensto enclosures							
		KDP 90/5 ALU	KDP 90/8 ALU	KDP 90/25 ALU	KDP 90/28 ALU	KDP 90/28 V4A	KDP 90/39+3 ALU	KDP 90/39+3 V4A	KDP 90/55 V4A
Number	Type	87663029	87663026	87663022	87663032	87663034	87663036	87663038	87663058
FFUF153012G	Cubo F	-	-	-	Δ	Δ	Δ	Δ	Δ
FFUF203012G	Cubo F	-	-	-	Δ	Δ	Δ	Δ	Δ
FFUF204012G	Cubo F	-	-	-	Δ	Δ	Δ	Δ	Δ
FFUF205012G	Cubo F	-	-	-	Δ	Δ	Δ	Δ	Δ
FFUF206012G	Cubo F	-	-	-	Δ	Δ	Δ	Δ	Δ
FFUF208012G	Cubo F	-	-	-	Δ	Δ	Δ	Δ	Δ
FFUF302012	Cubo F	-	-	-	Δ	Δ	Δ	Δ	Δ
FFUF303012G	Cubo F	-	-	-	Δ	Δ	Δ	Δ	Δ
FFUF304012G	Cubo F	-	-	-	Δ	Δ	Δ	Δ	Δ
FFUF305012G	Cubo F	-	-	-	Δ	Δ	Δ	Δ	Δ
FFUF306012G	Cubo F	-	-	-	Δ	Δ	Δ	Δ	Δ
FFUF404012G	Cubo F	-	-	-	Δ	Δ	Δ	Δ	Δ
FFUF406012G	Cubo F	-	-	-	Δ	Δ	Δ	Δ	Δ
FFUF408012G	Cubo F	-	-	-	Δ	Δ	Δ	Δ	Δ
FFUF502012	Cubo F	-	-	-	Δ	Δ	Δ	Δ	Δ
FFUF602012	Cubo F	-	-	-	Δ	Δ	Δ	Δ	Δ
FFUF802012	Cubo F	-	-	-	Δ	Δ	Δ	Δ	Δ

Δ can be directly fitted into the casing following modification through 2 centre holes in the enclosure  
 - cannot be combined



# Cable entry plate KDP Metal

## Material data

Type Cable entry plate	Material	Temperature		RoHS Compliant	IP protection class	Halogen-free	Phosphorous-free	Cadmium-free	Asbestos-free	Lead-free	Silicone-free
		Min.	Max.								
90/5 ALU	Plate: AlMg3 (3.3535) Seal: NBR/EPDM	-22 °F	+194 °F	✓	IP 65	✓	✓	✓	✓	✓	✓
90/8 ALU	Plate: AlMg3 (3.3535) Seal: NBR/EPDM	-22 °F	+194 °F	✓	IP 65	✓	✓	✓	✓	✓	✓
90/25 ALU	Plate: AlMg3 (3.3535) Seal: NBR/EPDM	-22 °F	+194 °F	✓	IP 65	✓	✓	✓	✓	✓	✓
90/28 ALU	Plate: AlMg3 (3.3535) Seal: NBR/EPDM	-22 °F	+194 °F	✓	IP 65	✓	✓	✓	✓	✓	✓
90/28 V4A	Plate: V4A (1.4571) Seal: NBR/EPDM	-22 °F	+194 °F	✓	IP 65	✓	✓	✓	✓	✓	✓
90/39+3 ALU	Plate: AlMg3 (3.3535) Seal: NBR/EPDM	-22 °F	+194 °F	✓	IP 65	✓	✓	✓	✓	✓	✓
90/39+3 V4A	Plate: V4A (1.4571) Seal: NBR/EPDM	-22 °F	+194 °F	✓	IP 65	✓	✓	✓	✓	✓	✓
90/55 V4A	Plate: V4A (1.4571) Seal: NBR/EPDM	-22 °F	+194 °F	✓	IP 65	✓	✓	✓	✓	✓	✓
100/30 V4A	Plate: V4A (1.4571) Seal: NBR/EPDM	-22 °F	+194 °F	✓	IP 65	✓	✓	✓	✓	✓	✓
100/30B V4A	Plate: V4A (1.4571) Seal: NBR/EPDM	-22 °F	+194 °F	✓	IP 65	✓	✓	✓	✓	✓	✓
100/40 V4A	Plate: V4A (1.4571) Seal: NBR/EPDM	-22 °F	+194 °F	✓	IP 65	✓	✓	✓	✓	✓	✓
100/56 V4A	Plate: V4A (1.4571) Seal: NBR/EPDM	-22 °F	+194 °F	✓	IP 65	✓	✓	✓	✓	✓	✓
100/56B V4A	Plate: V4A (1.4571) Seal: NBR/EPDM	-22 °F	+194 °F	✓	IP 65	✓	✓	✓	✓	✓	✓
100/56C V4A	Plate: V4A (1.4571) Seal: NBR/EPDM	-22 °F	+194 °F	✓	IP 65	✓	✓	✓	✓	✓	✓
105/12 ALU	Plate: AlMg3 (3.3535) Seal: NBR/EPDM	-22 °F	+194 °F	✓	IP 65	✓	✓	✓	✓	✓	✓
105/15 ALU	Plate: AlMg3 (3.3535) Seal: NBR/EPDM	-22 °F	+194 °F	✓	IP 65	✓	✓	✓	✓	✓	✓
105/15 V4A	Plate: V4A (1.4571) Seal: NBR/EPDM	-22 °F	+194 °F	✓	IP 65	✓	✓	✓	✓	✓	✓
105/32 ALU	Plate: AlMg3 (3.3535) Seal: NBR/EPDM	-22 °F	+194 °F	✓	IP 65	✓	✓	✓	✓	✓	✓

\*\* = not certified



## Material data

Type Cable entry plate	Material	Temperature		RoHS Compliant	IP protection class	Halogen- free	Phosphorous- free	Cadmium- free	Asbestos- free	Lead- free	Silicone- free
		Min.	Max.								
105/32 V4A	Plate: V4A (1.4571) Seal: NBR/EPDM	-22 °F	+194 °F	✓	IP 65	✓	✓	✓	✓	✓	✓
134/34 ALU	Plate: AlMg3 (3.3535) Seal: NBR/EPDM	-22 °F	+194 °F	✓	IP 65	✓	✓	✓	✓	✓	✓
149/25 ALU	Plate: AlMg3 (3.3535) Seal: NBR/EPDM	-22 °F	+194 °F	✓	IP 65	✓	✓	✓	✓	✓	✓
149/46 ALU	Plate: AlMg3 (3.3535) Seal: NBR/EPDM	-22 °F	+194 °F	✓	IP 65	✓	✓	✓	✓	✓	✓
149/56 V4A	Plate: V4A (1.4571) Seal: NBR/EPDM	-22 °F	+194 °F	✓	IP 65	✓	✓	✓	✓	✓	✓
149/140 V4A	Plate: V4A (1.4571) Seal: NBR/EPDM	-22 °F	+194 °F	✓	IP 65	✓	✓	✓	✓	✓	✓
149/158 V4A	Plate: V4A (1.4571) Seal: NBR/EPDM	-22 °F	+194 °F	✓	IP 65	✓	✓	✓	✓	✓	✓
149/292 V4A	Plate: V4A (1.4571) Seal: NBR/EPDM	-22 °F	+194 °F	✓	IP 65	✓	✓	✓	✓	✓	✓


Type Adapter plate Blanking plate	Material	Temperature		RoHS Compliant	IP protection class	Halogen- free	Phosphorous- free	Cadmium- free	Asbestos- free	Lead- free	Silicone- free
		Min.	Max.								
149/100/2 V4A	V4A (1.4571)			✓	✓	✓	✓	✓	✓	✓	✓
149/100/3 V4A	V4A (1.4571)			✓	✓	✓	✓	✓	✓	✓	✓
149/105/3 Pce.	Steel (1.1203)			✓	✓	✓	✓	✓	✓	✓	✓
100/145 V4A	V4A (1.4571)			✓	✓	✓	✓	✓	✓	✓	✓
105/155 ALU	AlMg3 (3.3535)			✓	✓	✓	✓	✓	✓	✓	✓
105/155 V4A	V4A (1.4571)			✓	✓	✓	✓	✓	✓	✓	✓


\*\* = not certified



# Cable entry plate KDP Metal

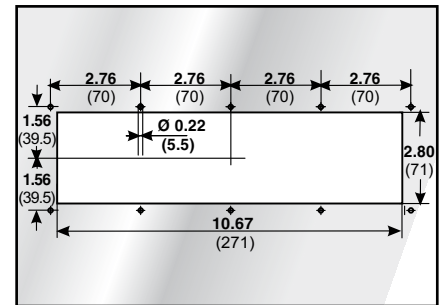
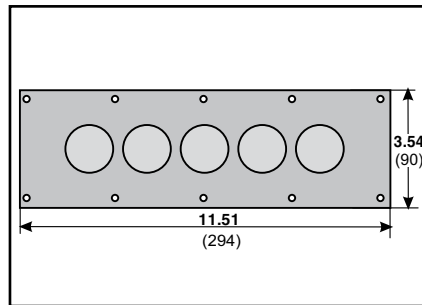
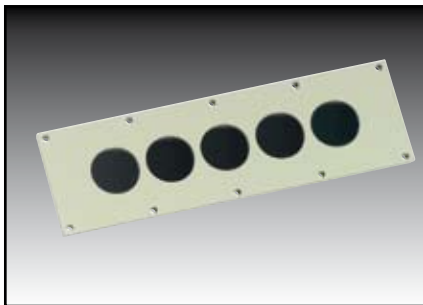
## Cable entry plate Metal Type 90/5 RoHS compliant

 -22 to +194 °F

 Plate: See article  
Seal: NBR/EPDM

 IP 65

Cable entry plate for insertion of power cables. Ideally suited for roof or floor openings at switch cabinets.



KDP 90/5...

Type	Order no.	Color	Openings Total	Openings Quantity / Ø	Material Plate	Pack qty
------	-----------	-------	-------------------	--------------------------	-------------------	-------------

KDP 90/5 ALU	87663029	RAL 7035	5	5 / 0.63 - 1.10 inch *	AlMg3 (3.3535)	1
--------------	----------	----------	---	------------------------	----------------	---

\* The maximum cable lug width of power cables is 1.26 inch

## Cable entry plate Metal Type 90/8

RoHS  
compliant



-22 to +194 °F

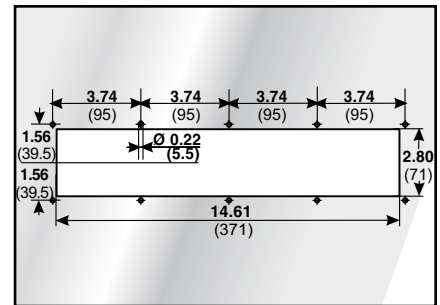
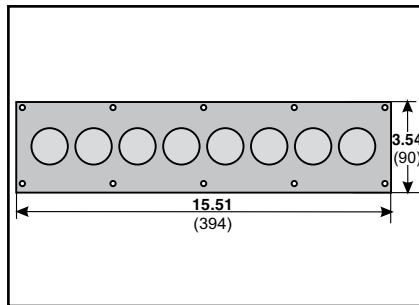
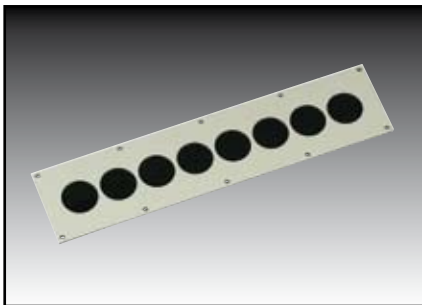


Plate: See article  
Seal: NBR/EPDM



IP 65

Cable entry plate for insertion of power cables. Ideally suited for roof or floor openings at switch cabinets.



KDP 90/8...

Type	Order no.	Color	Openings Total	Openings Quantity / Ø	Material Plate	Pack qty
------	-----------	-------	-------------------	--------------------------	-------------------	-------------

KDP 90/8 ALU	87663026	RAL 7035	8	8 / 0.63 - 1.10 inch *	AlMg3 (3.3535)	1
--------------	----------	----------	---	------------------------	----------------	---

\* The maximum cable lug width of power cables is 1.26 inch



## Cable entry plate Metal Type 90/28

RoHS  
compliant



-22 to +194 °F

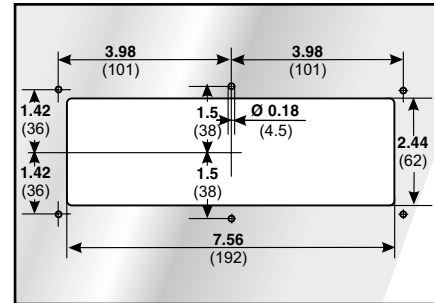
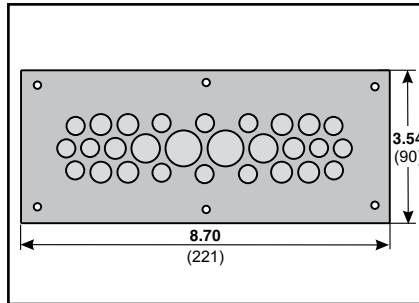
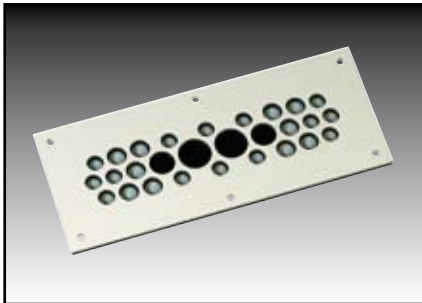


Plate: See article  
Seal: NBR/EPDM



IP 65

Efficient connection technology for terminal housings and control cabinets for tool-free introduction of actuators, sensors, measuring and control instrumentation, optoelectronics, pneumatic lines and drive technology into a control housing. The stainless steel version is particularly suitable for application in the food and chemical areas. Integrated threaded bolts mean that no screws are visible from outside. Mounting set included in delivery.



KDP 90/28...

Type	Order no.	Color	Openings Total	Openings Quantity / Ø	Material Plate	Pack qty
KDP 90/28 ALU	87663032	RAL 7035	28	14 / 0.16 - 0.31 inch	AlMg3 (3.3535)	1
KDP 90/28 V4A	87663034	smoothed	28	10 / 0.24 - 0.39 inch 2 / 0.35 - 0.55 inch 2 / 0.47 - 0.71 inch	V4A (1.4571)	1
Corresponds to Rittal flange plate size 2						
Cable entry plate matching						
Rittal terminal boxes type KL						
1530.510; 1531.510; 1532.510; 1533.510; 1534.510; 1535.510; 1536.510; 1537.510; 1538.510; 1539.510;						
1540.510; 1541.510; 1542.510						
Rittal Pillar type CP						
6214.xx0; 6220.xx0						
Rittal enclosure / under-desk enclosure / printer cabinet / worktop feet type IW						
6900.xxx; 6901.xxx						
Rittal wall-mounted enclosure type DK						
7454.xxx						



# Cable entry plate KDP Metal

## Cable entry plate Metal Type 90/39+3

RoHS  
compliant



-22 to +194 °F



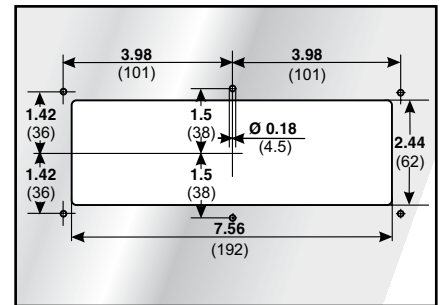
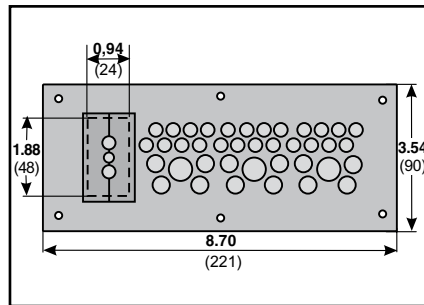
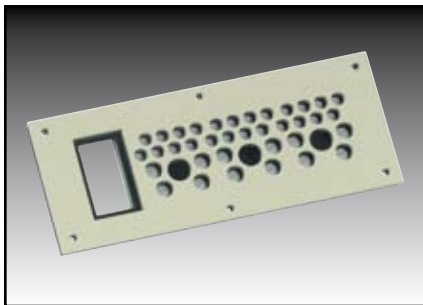
Plate: See article  
Seal: NBR/EPDM



IP 65

Efficient connection technology for terminal housings and control cabinets for tool-free introduction of actuators, sensors, measuring and control instrumentation, optoelectronics, pneumatic lines and drive technology into a control housing. The cut-out of the KDP 90/39+3 enables up to three pre-assembled cables with a maximum connector size of 1.89 x 0.94 inch to be introduced. The connector grommet is simply inserted into the plate and locked from behind by means of a quick-release lock.

The stainless steel version is particularly suitable for application in the food and chemical areas. Integrated threaded bolts mean that no screws are visible from outside. Mounting set included in delivery.



KDP 90/39+3...

Type	Order no.	Color	Openings Total	Openings Quantity / Ø	Material Plate	Pack qty
KDP 90/39+3 ALU	87663036	RAL 7035	42	24 / 0.12 - 0.24 inch	AlMg3 (3.3535)	1
KDP 90/39+3 V4A	87663038	smoothed	42	12 / 0.16 - 0.31 inch 3 / 0.31 - 0.47 inch for pre-assembled cables 1 x 0.24 inch / 2 x 0.33 inch Max. connector size 1.89 x 0.94 inch	V4A (1.4571)	1
Corresponds to Rittal flange plate size 2						
Cable entry plate matching						
Rittal terminal boxes type KL						
1530.510; 1531.510; 1532.510; 1533.510; 1534.510; 1535.510; 1536.510; 1537.510; 1538.510; 1539.510;						
1540.510; 1541.510; 1542.510						
Rittal Pillar type CP						
6214.xx0; 6220.xx0						
Rittal enclosure / under-desk enclosure / printer cabinet / worktop feet type IW						
6900.xxx; 6901.xxx						
Rittal wall-mounted enclosure type DK						
7454.xxx						

## Cable entry plate Metal Type 90/55

RoHS  
compliant



-22 to +194 °F



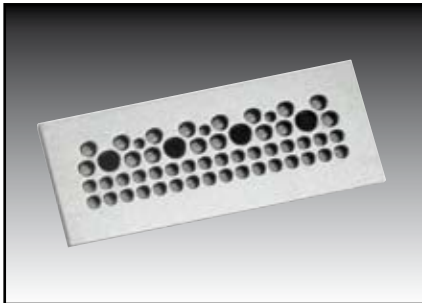
Plate: See article  
Seal: NBR/EPDM



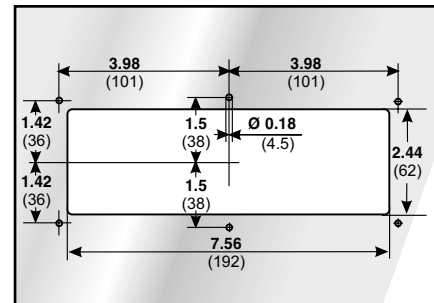
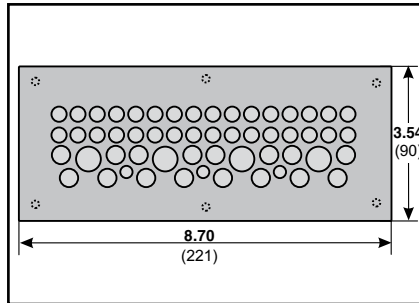
IP 65

Efficient connection technology for terminal housings and control cabinets for tool-free introduction of actuators, sensors, measuring and control instrumentation, optoelectronics, pneumatic lines and drive technology into a control housing.

The stainless steel version is particularly suitable for application in the food and chemical areas. Integrated threaded bolts mean that no screws are visible from outside. Mounting set included in delivery.



KDP 90/55...



Type	Order no.	Color	Openings Total	Openings Quantity / Ø	Material Plate	Pack qty
KDP 90/55 V4A	87663058	smoothed	55	3 / 0.12 - 0.20 inch 32 / 0.12 - 0.24 inch 16 / 0.16 - 0.31 inch 4 / 0.31 - 0.47 inch	V4A (1.4571)	1
Corresponds to Rittal flange plate size 2						
Cable entry plate matching						
Rittal terminal boxes type KL						
1530.510; 1531.510; 1532.510; 1533.510; 1534.510; 1535.510; 1536.510; 1537.510; 1538.510; 1539.510;						
1540.510; 1541.510; 1542.510						
Rittal Pillar type CP						
6214.xx0; 6220.xx0						
Rittal enclosure / under-desk enclosure / printer cabinet / worktop feet type IW						
6900.xxx; 6901.xxx						
Rittal wall-mounted enclosure type DK						
7454.xxx						



# Cable entry plate KDP Metal

## Cable entry plate Metal Type 100/30

RoHS compliant



-22 to +194 °F



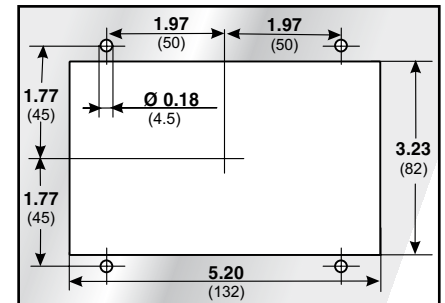
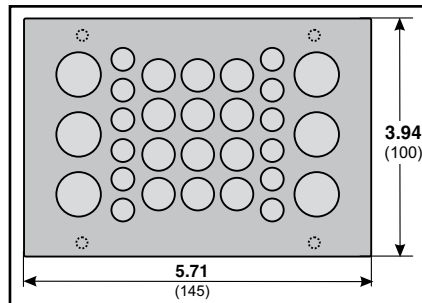
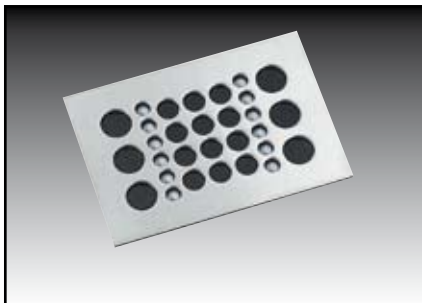
Plate: See article  
Seal: NBR/EPDM



IP 65

Efficient connection technology for terminal housings and control cabinets for tool-free introduction of actuators, sensors, measuring and control instrumentation, optoelectronics, pneumatic lines and drive technology into a control housing. KDPs of product group 100 fit into standard cut-outs for RITTAL cabinets when combined with adapter plates KDP AP 149/100/... These adapter plates can be configured individually.

The stainless steel version is particularly suitable for application in the food and chemical areas. Integrated threaded bolts mean that no screws are visible from outside. Mounting set included in delivery.



KDP 100/30...

Type	Order no.	Color	Openings Total	Openings Quantity / Ø	Material Plate	Pack qty
KDP 100/30 V4A	87663062	smoothed	30	12 / 0.14 - 0.24 inch 12 / 0.24 - 0.39 inch 6 / 0.35 - 0.55 inch	V4A (1.4571)	1
In connection with adapter plate KDP AP 149/100/2 (Ord. No. 87663080) matching						
Rittal compact control cabinet type AE						
1045.500; 1050.500; 1057.500; 1100.500; 1110.500; 1114.500; 1130.500; 1213.500; 1338.500; 1350.500						
Rittal module enclosure, compact enclosure, Toptec type CS						
9751.125; 9751.145; 9751.165; 9752.125; 9771.111; 9771.115; 9772.111; 9772.115; 9774.200; 9774.210;						
9774.250; 9774.400; 9774.410; 9774.450; 9775.100; 9775.200; 9775.300; 9775.400						
Rittal wall-mounted distributor type SV						
9665.815; 9665.855						
In connection with adapter plate KDP AP 149/100/3 (Ord. No. 87663082) matching						
Rittal compact control cabinet type AE						
1039.500; 1058.500; 1060.500; 1073.500; 1076.500; 1077.500; 1090.500; 1180.500; 1260.500; 1280.500;						
1339.500; 1360.500; 1376.500						
Rittal wall-mounted enclosure type EL						
1919.500; 1920.500; 1926.500						
Rittal wall-mounted enclosure / distributor type DK						
7011.535; 7012.535; 7013.535; 7014.535; 7641.000; 7643.000; 7644.000; 7645.000						
Rittal module enclosure, compact enclosure, Toptec type CS						
9772.111; 9772.115						
Rittal empty enclosure for industrial distributor type IN						
1076.290						
Rittal wall-mounted distributor type SV						
9665.825; 9665.835; 9665.845						



## Cable entry plate Metal Type 100/30B

RoHS  
compliant



-22 to +194 °F



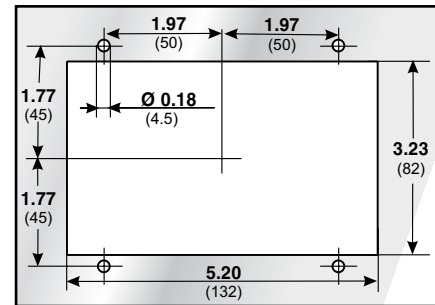
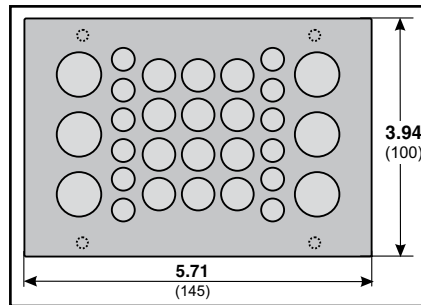
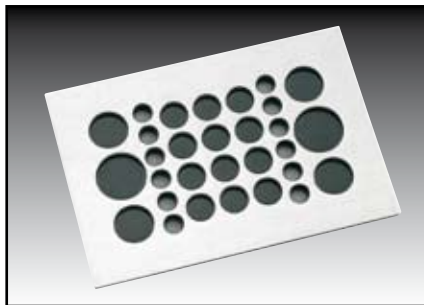
Plate: See article  
Seal: NBR/EPDM



IP 65

Efficient connection technology for terminal housings and control cabinets for tool-free introduction of actuators, sensors, measuring and control instrumentation, optoelectronics, pneumatic lines and drive technology into a control housing. KDPs of product group 100 fit into standard cut-outs for RITTAL cabinets when combined with adapter plates KDP AP 149/100/... These adapter plates can be configured individually.

The stainless steel version is particularly suitable for application in the food and chemical areas. Integrated threaded bolts mean that no screws are visible from outside. Mounting set included in delivery.



KDP 100/30b...

Type	Order no.	Color	Openings Total	Openings Quantity / Ø	Material Plate	Pack qty
KDP 100/30B V4A	87663063	smoothed	30	12 / 0.14 - 0.24 inch 12 / 0.24 - 0.39 inch 4 / 0.35 - 0.55 inch 2 / 0.47 - 0.71 inch	V4A (1.4571)	1
In connection with adapter plate KDP AP 149/100/2 (Ord. No. 87663080) matching						
Rittal compact control cabinet type AE						
1045.500; 1050.500; 1057.500; 1100.500; 1110.500; 1114.500; 1130.500; 1213.500; 1338.500; 1350.500						
Rittal module enclosure, compact enclosure, Toptec type CS						
9751.125; 9751.145; 9751.165; 9752.125; 9771.111; 9771.115; 9772.111; 9772.115; 9774.200; 9774.210; 9774.250; 9774.400; 9774.410; 9774.450; 9775.100; 9775.200; 9775.300; 9775.400						
Rittal wall-mounted distributor type SV						
9665.815; 9665.855						
In connection with adapter plate KDP AP 149/100/3 (Ord. No. 87663082) matching						
Rittal compact control cabinet type AE						
1039.500; 1058.500; 1060.500; 1073.500; 1076.500; 1077.500; 1090.500; 1180.500; 1260.500; 1280.500; 1339.500; 1360.500; 1376.500						
Rittal wall-mounted enclosure type EL						
1919.500; 1920.500; 1926.500						
Rittal wall-mounted enclosure / distributor type DK						
7011.535; 7012.535; 7013.535; 7014.535; 7641.000; 7643.000; 7644.000; 7645.000						
Rittal module enclosure, compact enclosure, Toptec type CS						
9772.111; 9772.115						
Rittal empty enclosure for industrial distributor type IN						
1076.290						
Rittal wall-mounted distributor type SV						
9665.825; 9665.835; 9665.845						



# Cable entry plate KDP Metal

## Cable entry plate Metal Type 100/40

RoHS compliant



-22 to +194 °F



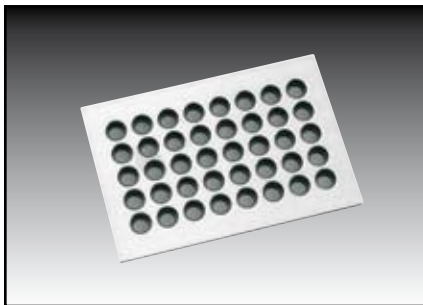
Plate: See article  
Seal: NBR/EPDM



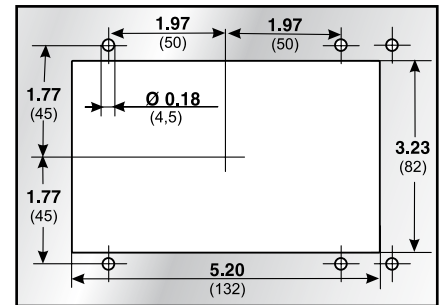
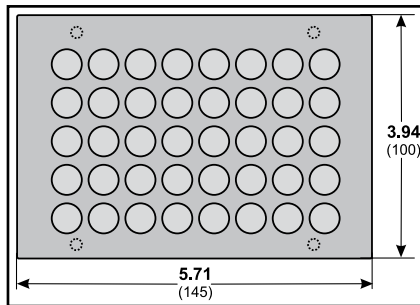
IP 65

Efficient connection technology for terminal housings and control cabinets for tool-free introduction of actuators, sensors, measuring and control instrumentation, optoelectronics, pneumatic lines and drive technology into a control housing. KDPs of product group 100 fit into standard cut-outs for RITTAL cabinets when combined with adapter plates KDP AP 149/100/... These adapter plates can be configured individually.

The stainless steel version is particularly suitable for application in the food and chemical areas. Integrated threaded bolts mean that no screws are visible from outside. Mounting set included in delivery.



KDP 100/40...



Type	Order no.	Color	Openings Total	Openings Quantity / Ø	Material Plate	Pack qty
KDP 100/40 V4A	87663061	smoothed	40	40 / 0.18 - 0.33 inch	V4A (1.4571)	1
In connection with adapter plate KDP AP 149/100/2 (Ord. No. 87663080) matching						
Rittal compact control cabinet type AE						
1045.500; 1050.500; 1057.500; 1100.500; 1110.500; 1114.500; 1130.500; 1213.500; 1338.500; 1350.500						
Rittal module enclosure, compact enclosure, Toptec type CS						
9751.125; 9751.145; 9751.165; 9752.125; 9771.111; 9771.115; 9772.111; 9772.115; 9774.200; 9774.210; 9774.250; 9774.400; 9774.410; 9774.450; 9775.100; 9775.200; 9775.300; 9775.400						
Rittal wall-mounted distributor type SV						
9665.815; 9665.855						
In connection with adapter plate KDP AP 149/100/3 (Ord. No. 87663082) matching						
Rittal compact control cabinet type AE						
1039.500; 1058.500; 1060.500; 1073.500; 1076.500; 1077.500; 1090.500; 1180.500; 1260.500; 1280.500; 1339.500; 1360.500; 1376.500						
Rittal wall-mounted enclosure type EL						
1919.500; 1920.500; 1926.500						
Rittal wall-mounted enclosure / distributor type DK						
7011.535; 7012.535; 7013.535; 7014.535; 7641.000; 7643.000; 7644.000; 7645.000						
Rittal module enclosure, compact enclosure, Toptec type CS						
9772.111; 9772.115						
Rittal empty enclosure for industrial distributor type IN						
1076.290						
Rittal wall-mounted distributor type SV						
9665.825; 9665.835; 9665.845						

## Cable entry plate Metal Type 100/56

RoHS  
compliant



-22 to +194 °F



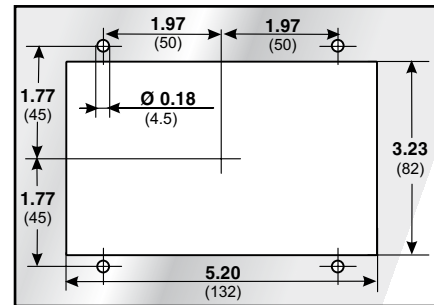
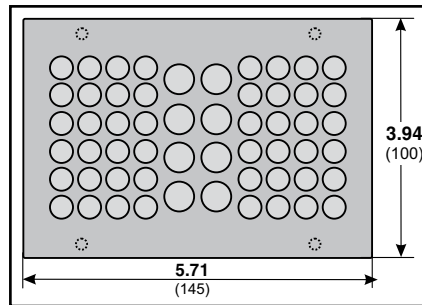
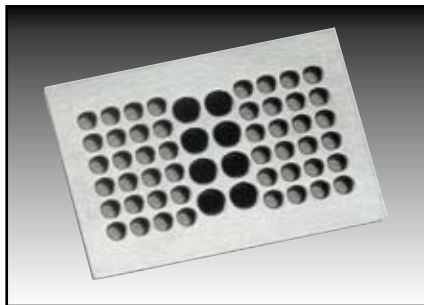
Plate: See article  
Seal: NBR/EPDM



IP 65

Efficient connection technology for terminal housings and control cabinets for tool-free introduction of actuators, sensors, measuring and control instrumentation, optoelectronics, pneumatic lines and drive technology into a control housing. KDPs of product group 100 fit into standard cut-outs for RITTAL cabinets when combined with adapter plates KDP AP 149/100/... These adapter plates can be configured individually.

The stainless steel version is particularly suitable for application in the food and chemical areas. Integrated threaded bolts mean that no screws are visible from outside. Mounting set included in delivery.



KDP 100/56...

Type	Order no.	Color	Openings Total	Openings Quantity / Ø	Material Plate	Pack qty
KDP 100/56 V4A	87663060	smoothed	56	48 / 0.14 - 0.24 inch 8 / 0.24 - 0.39 inch	V4A (1.4571)	1
In connection with adapter plate KDP AP 149/100/2 (Ord. No. 87663080) matching						
Rittal compact control cabinet type AE						
1045.500; 1050.500; 1057.500; 1100.500; 1110.500; 1114.500; 1130.500; 1213.500; 1338.500; 1350.500						
Rittal module enclosure, compact enclosure, Toptec type CS						
9751.125; 9751.145; 9751.165; 9752.125; 9771.111; 9771.115; 9772.111; 9772.115; 9774.200; 9774.210;						
9774.250; 9774.400; 9774.410; 9774.450; 9775.100; 9775.200; 9775.300; 9775.400						
Rittal wall-mounted distributor type SV						
9665.815; 9665.855						
In connection with adapter plate KDP AP 149/100/3 (Ord. No. 87663082) matching						
Rittal compact control cabinet type AE						
1039.500; 1058.500; 1060.500; 1073.500; 1076.500; 1077.500; 1090.500; 1180.500; 1260.500; 1280.500;						
1339.500; 1360.500; 1376.500						
Rittal wall-mounted enclosure type EL						
1919.500; 1920.500; 1926.500						
Rittal wall-mounted enclosure / distributor type DK						
7011.535; 7012.535; 7013.535; 7014.535; 7641.000; 7643.000; 7644.000; 7645.000						
Rittal module enclosure, compact enclosure, Toptec type CS						
9772.111; 9772.115						
Rittal empty enclosure for industrial distributor type IN						
1076.290						
Rittal wall-mounted distributor type SV						
9665.825; 9665.835; 9665.845						



# Cable entry plate KDP Metal

## Cable entry plate Metal Type 100/56B

RoHS  
compliant



-22 to +194 °F



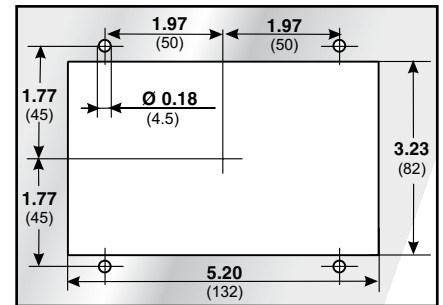
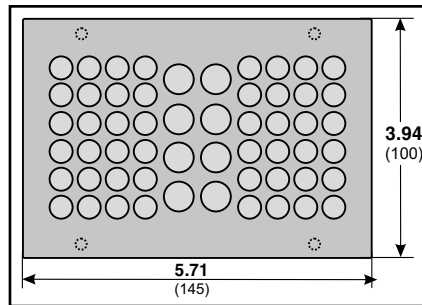
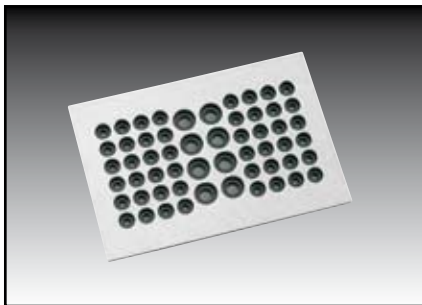
Plate: See article  
Seal: NBR/EPDM



IP 65

Efficient connection technology for terminal housings and control cabinets for tool-free introduction of actuators, sensors, measuring and control instrumentation, optoelectronics, pneumatic lines and drive technology into a control housing. KDPs of product group 100 fit into standard cut-outs for RITTAL cabinets when combined with adapter plates KDP AP 149/100/... These adapter plates can be configured individually.

The stainless steel version is particularly suitable for application in the food and chemical areas. Integrated threaded bolts mean that no screws are visible from outside. Mounting set included in delivery.



KDP 100/56b...

Type	Order no.	Color	Openings Total	Openings Quantity / Ø	Material Plate	Pack qty
KDP 100/56B V4A	87663065	smoothed	56	48 / 0.04 - 0.14 inch 8 / 0.14 - 0.26 inch	V4A (1.4571)	1
In connection with adapter plate KDP AP 149/100/2 (Ord. No. 87663080) matching						
Rittal compact control cabinet type AE						
1045.500; 1050.500; 1057.500; 1100.500; 1110.500; 1114.500; 1130.500; 1213.500; 1338.500; 1350.500						
Rittal module enclosure, compact enclosure, Toptec type CS						
9751.125; 9751.145; 9751.165; 9752.125; 9771.111; 9771.115; 9772.111; 9772.115; 9774.200; 9774.210;						
9774.250; 9774.400; 9774.410; 9774.450; 9775.100; 9775.200; 9775.300; 9775.400						
Rittal wall-mounted distributor type SV						
9665.815; 9665.855						
In connection with adapter plate KDP AP 149/100/3 (Ord. No. 87663082) matching						
Rittal compact control cabinet type AE						
1039.500; 1058.500; 1060.500; 1073.500; 1076.500; 1077.500; 1090.500; 1180.500; 1260.500; 1280.500;						
1339.500; 1360.500; 1376.500						
Rittal wall-mounted enclosure type EL						
1919.500; 1920.500; 1926.500						
Rittal wall-mounted enclosure / distributor type DK						
7011.535; 7012.535; 7013.535; 7014.535; 7641.000; 7643.000; 7644.000; 7645.000						
Rittal module enclosure, compact enclosure, Toptec type CS						
9772.111; 9772.115						
Rittal empty enclosure for industrial distributor type IN						
1076.290						
Rittal wall-mounted distributor type SV						
9665.825; 9665.835; 9665.845						

## Cable entry plate Metal Type 100/56C

RoHS  
compliant



-22 to +194 °F



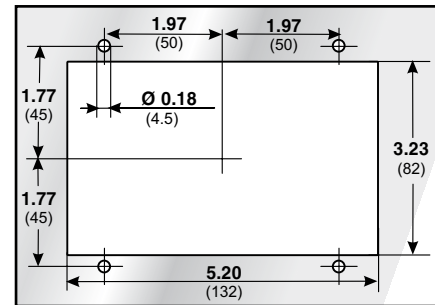
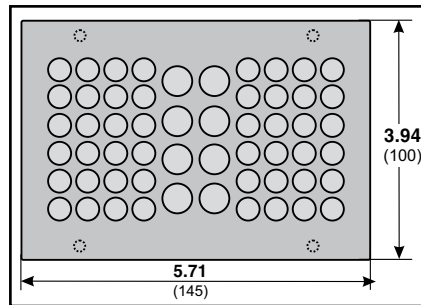
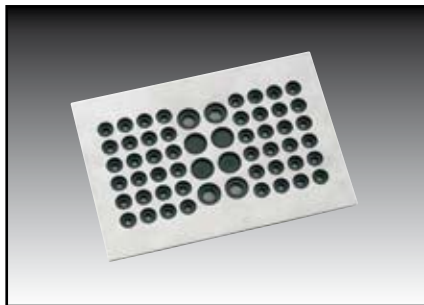
Plate: See article  
Seal: NBR/EPDM



IP 65

Efficient connection technology for terminal housings and control cabinets for tool-free introduction of actuators, sensors, measuring and control instrumentation, optoelectronics, pneumatic lines and drive technology into a control housing. KDPs of product group 100 fit into standard cut-outs for RITTAL cabinets when combined with adapter plates KDP AP 149/100/... These adapter plates can be configured individually.

The stainless steel version is particularly suitable for application in the food and chemical areas. Integrated threaded bolts mean that no screws are visible from outside. Mounting set included in delivery.



KDP 100/56c...

Type	Order no.	Color	Openings Total	Openings Quantity / Ø	Material Plate	Pack qty
KDP 100/56C V4A	87663067	smoothed	56	48 / 0.04 - 0.14 inch 4 / 0.14 - 0.26 inch 4 / 0.24 - 0.39 inch	V4A (1.4571)	1
In connection with adapter plate KDP AP 149/100/2 (Ord. No. 87663080) matching						
Rittal compact control cabinet type AE						
1045.500; 1050.500; 1057.500; 1100.500; 1110.500; 1114.500; 1130.500; 1213.500; 1338.500; 1350.500						
Rittal module enclosure, compact enclosure, Toptec type CS						
9751.125; 9751.145; 9751.165; 9752.125; 9771.111; 9771.115; 9772.111; 9772.115; 9774.200; 9774.210; 9774.250; 9774.400; 9774.410; 9774.450; 9775.100; 9775.200; 9775.300; 9775.400						
Rittal wall-mounted distributor type SV						
9665.815; 9665.855						
In connection with adapter plate KDP AP 149/100/3 (Ord. No. 87663082) matching						
Rittal compact control cabinet type AE						
1039.500; 1058.500; 1060.500; 1073.500; 1076.500; 1077.500; 1090.500; 1180.500; 1260.500; 1280.500; 1339.500; 1360.500; 1376.500						
Rittal wall-mounted enclosure type EL						
1919.500; 1920.500; 1926.500						
Rittal wall-mounted enclosure / distributor type DK						
7011.535; 7012.535; 7013.535; 7014.535; 7641.000; 7643.000; 7644.000; 7645.000						
Rittal module enclosure, compact enclosure, Toptec type CS						
9772.111; 9772.115						
Rittal empty enclosure for industrial distributor type IN						
1076.290						
Rittal wall-mounted distributor type SV						
9665.825; 9665.835; 9665.845						



# Cable entry plate KDP Metal

## Cable entry plate Metal Type 105/12

RoHS  
compliant



-22 to +194 °F



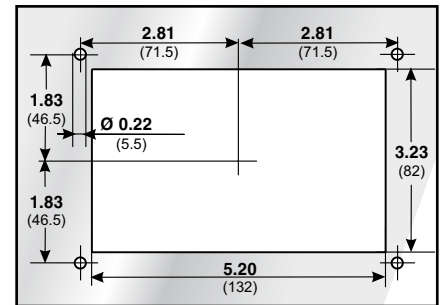
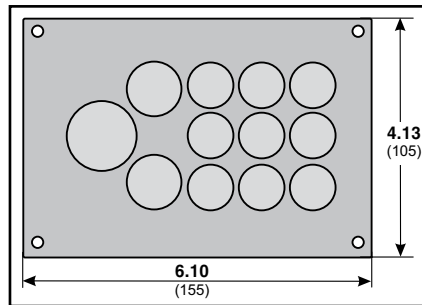
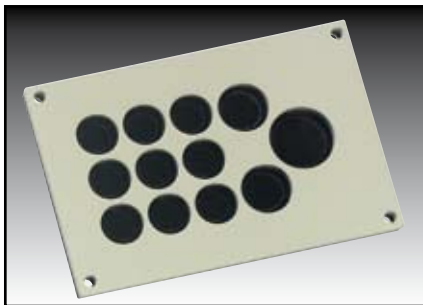
Plate: See article  
Seal: NBR/EPDM



IP 65

Efficient connection technology for terminal housings and control cabinets for tool-free introduction of actuators, sensors, measuring and control instrumentation, optoelectronics, pneumatic lines and drive technology into a control housing. KDPs of product group 105 fit into standard cut-outs for RITTAL cabinets when combined with adapter plates KDP AP 149/105/... These adapter plates can be configured individually.

The stainless steel version is particularly suitable for application in the food and chemical areas. Integrated threaded bolts mean that no screws are visible from outside. Mounting set included in delivery.



KDP 105/12...

Type	Order no.	Color	Openings Total	Openings Quantity / Ø	Material Plate	Pack qty
KDP 105/12 ALU	87663056	RAL 7035	12	9 / 0.35 - 0.55 inch	AlMg3 (3.3535)	1
KDP 105/12 V4A	87663057	smoothed	12	2 / 0.47 - 0.71 inch	V4A 1.4571	1
				1 / 0.71 - 0.98 inch		
In connection with adapter plate KDP AP 149/105/3 (Ord. No. 87663084) matching						
Rittal compact control cabinet type AE						
1039.500; 1058.500; 1060.500; 1073.500; 1076.500; 1077.500; 1090.500; 1180.500; 1260.500; 1280.500;						
1339.500; 1360.500; 1376.500						
Rittal wall-mounted enclosure type EL						
1919.500; 1920.500; 1926.500						
Rittal wall-mounted enclosure / distributor type DK						
7011.535; 7012.535; 7013.535; 7014.535; 7641.00; 7643.00; 7644.00; 7645.00						
Rittal module enclosure, compact enclosure, Toptec type CS						
9772.111; 9772.115						
Rittal empty enclosure for industrial distributor type IN						
1076.290						
Rittal wall-mounted distributor type SV						
9665.825; 9665.835; 9665.845						

## Cable entry plate Metal Type 105/15

RoHS  
compliant



-22 to +194 °F



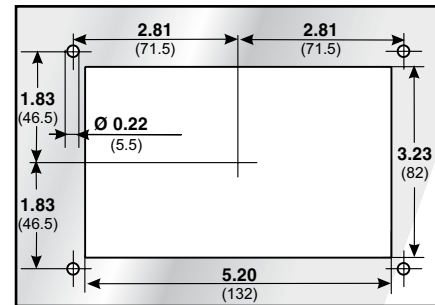
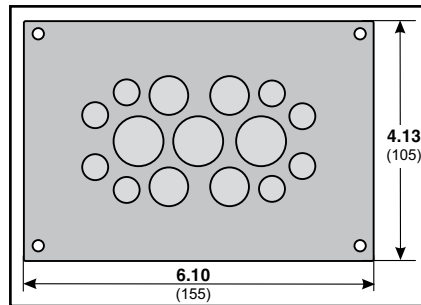
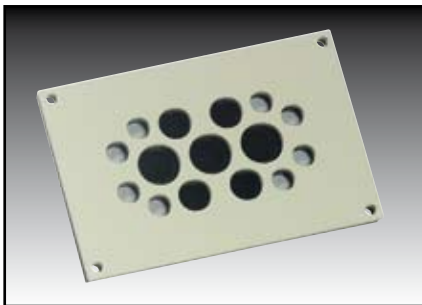
Plate: See article  
Seal: NBR/EPDM



IP 65

Efficient connection technology for terminal housings and control cabinets for tool-free introduction of actuators, sensors, measuring and control instrumentation, optoelectronics, pneumatic lines and drive technology into a control housing. KDPs of product group 105 fit into standard cut-outs for RITTAL cabinets when combined with adapter plates KDP AP 149/105/... These adapter plates can be configured individually.

The stainless steel version is particularly suitable for application in the food and chemical areas. Integrated threaded bolts mean that no screws are visible from outside. Mounting set included in delivery.



KDP 105/15...

Type	Order no.	Color	Openings Total	Openings Quantity / Ø	Material Plate	Pack qty
KDP 105/15 ALU	87663014	RAL 7035	15	8 / 0.24 - 0.39 inch	AlMg3 (3.3535)	1
KDP 105/15 V4A	87663016	smoothed	15	4 / 0.35 - 0.55 inch 3 / 0.47 - 0.71 inch	V4A (1.4571)	1
In connection with adapter plate KDP AP 149/105/3 (Ord. No. 87663084) matching						
Rittal compact control cabinet type AE						
1039.500; 1058.500; 1060.500; 1073.500; 1076.500; 1077.500; 1090.500; 1180.500; 1260.500; 1280.500;						
1339.500; 1360.500; 1376.500						
Rittal wall-mounted enclosure type EL						
1919.500; 1920.500; 1926.500						
Rittal wall-mounted enclosure / distributor type DK						
7011.535; 7012.535; 7013.535; 7014.535; 7641.00; 7643.00; 7644.00; 7645.00						
Rittal module enclosure, compact enclosure, Toptec type CS						
9772.111; 9772.115						
Rittal empty enclosure for industrial distributor type IN						
1076.290						
Rittal wall-mounted distributor type SV						
9665.825; 9665.835; 9665.845						



# Cable entry plate KDP Metal

## Cable entry plate Metal Type 105/32



-22 to +194 °F

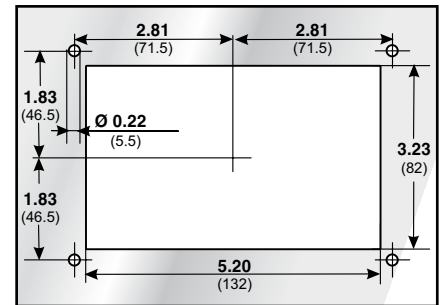
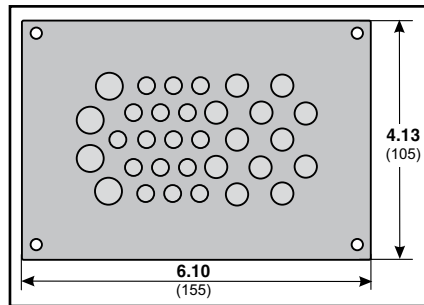
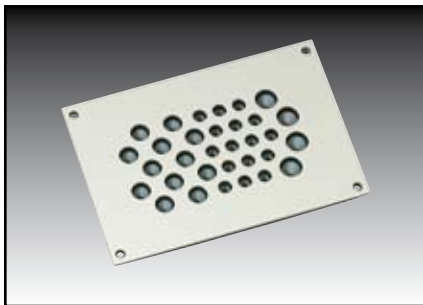


Plate: See article  
Seal: NBR/EPDM



IP 65

Efficient connection technology for terminal housings and control cabinets for tool-free introduction of actuators, sensors, measuring and control instrumentation, optoelectronics, pneumatic lines and drive technology into a control housing. KDPs of product group 105 fit into standard cut-outs for RITTAL cabinets when combined with adapter plates KDP AP 149/105/... These adapter plates can be configured individually. The stainless steel version is particularly suitable for application in the food and chemical areas. Integrated threaded bolts mean that no screws are visible from outside. Mounting set included in delivery.



KDP 105/32...

Type	Order no.	Color	Openings Total	Openings Quantity / Ø	Material Plate	Pack qty
KDP 105/32 ALU	87663010	RAL 7035	32	16 / 0.12 - 0.20 inch	AlMg3 (3.3535)	1
KDP 105/32 V4A	87663012	smoothed	32	12 / 0.16 - 0.31 inch	V4A (1.4571)	1
				4 / 0.24 - 0.39 inch		
In connection with adapter plate KDP AP 149/105/3 (Ord. No. 87663084) matching						
Rittal compact control cabinet type AE						
1039.500; 1058.500; 1060.500; 1073.500; 1076.500; 1077.500; 1090.500; 1180.500; 1260.500; 1280.500;						
1339.500; 1360.500; 1376.500						
Rittal wall-mounted enclosure type EL						
1919.500; 1920.500; 1926.500						
Rittal wall-mounted enclosure / distributor type DK						
7011.535; 7012.535; 7013.535; 7014.535; 7641.00; 7643.00; 7644.00; 7645.00						
Rittal module enclosure, compact enclosure, Toptec type CS						
9772.111; 9772.115						
Rittal empty enclosure for industrial distributor type IN						
1076.290						
Rittal wall-mounted distributor type SV						
9665.825; 9665.835; 9665.845						







# Cable entry plate KDP Metal

## Cable entry plate Metal Type 149/25

RoHS  
compliant



-22 to +194 °F

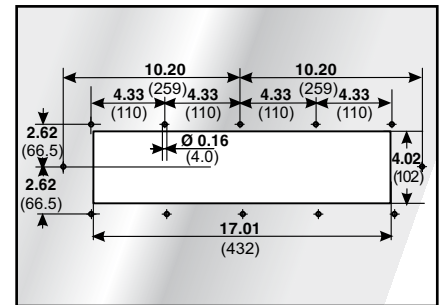
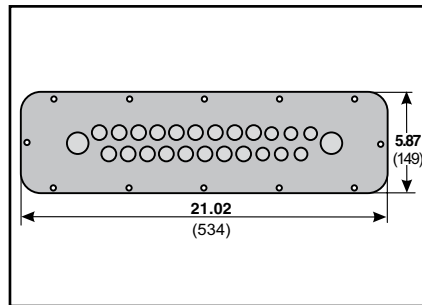
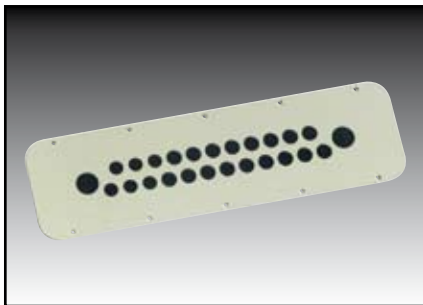


Plate: See article  
Seal: NBR/EPDM



IP 65

Efficient connection technology for terminal housings and control cabinets for tool-free introduction of actuators, sensors, measuring and control instrumentation, optoelectronics, pneumatic lines and drive technology into a control housing. KDPs of product group 149 can be fitted directly into the standard cut-outs of RITTAL cabinets.



KDP 149/25...

Type	Order no.	Color	Openings Total	Openings Quantity / Ø	Material Plate	Pack qty
KDP 149/25 ALU	87663040	RAL 7035	25	6 / 0.24 - 0.47 inch 17 / 0.47 - 0.71 inch 2 / 0.71 - 0.98 inch	AlMg3 (3.3535)	1
Corresponds to Rittal flange plate size 5						
Cable entry plate matching						
Rittal compact control cabinet type AE						
1039.500; 1058.500; 1060.500; 1073.500; 1076.500; 1077.500; 1090.500; 1180.500; 1260.500; 1280.500;						
1339.500; 1360.500; 1376.500						
Rittal wall-mounted enclosure type EL						
1919.500; 1920.500; 1926.500						
Rittal wall-mounted enclosure / distributor type DK						
7011.535; 7012.535; 7013.535; 7014.535; 7641.00; 7643.000; 7644.000; 7645.000						
Rittal module enclosure, compact enclosure, Topotec type CS						
9772.111; 9772.115						
Rittal empty enclosure for industrial distributor type IN						
1076.290						
Rittal wall-mounted distributor type SV						
9665.825; 9665.835; 9665.845						

## Cable entry plate Metal Type 149/46

RoHS  
compliant



-22 to +194 °F

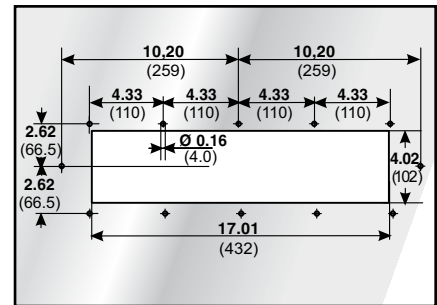
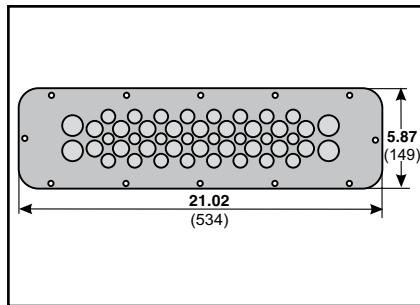
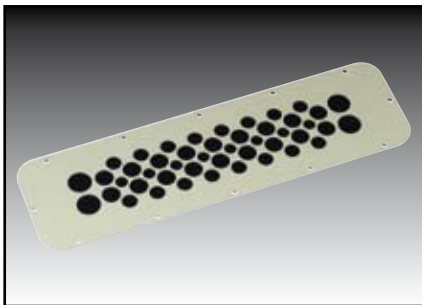


Plate: See article  
Seal: NBR/EPDM



IP 65

Efficient connection technology for terminal housings and control cabinets for tool-free introduction of actuators, sensors, measuring and control instrumentation, optoelectronics, pneumatic lines and drive technology into a control housing. KDPs of product group 149 can be fitted directly into the standard cut-outs of RITTAL cabinets.



KDP 149/46...

Type	Order no.	Color	Openings Total	Openings Quantity / Ø	Material Plate	Pack qty
KDP 149/46 ALU	87663064	RAL 7035	46	8 / 0.24 - 0.39 inch 16 / 0.39 - 0.55 inch 18 / 0.47 - 0.71 inch 4 / 0.71 - 0.98 inch	AlMg3 (3.3535)	1
Corresponds to Rittal flange plate size 5						
Cable entry plate matching						
Rittal compact control cabinet type AE						
1039.500; 1058.500; 1060.500; 1073.500; 1076.500; 1077.500; 1090.500; 1180.500; 1260.500; 1280.500;						
1339.500; 1360.500; 1376.500						
Rittal wall-mounted enclosure type EL						
1919.500; 1920.500; 1926.500						
Rittal wall-mounted enclosure / distributor type DK						
7011.535; 7012.535; 7013.535; 7014.535; 7641.00; 7643.000; 7644.000; 7645.000						
Rittal module enclosure, compact enclosure, Toptec type CS						
9772.111; 9772.115						
Rittal empty enclosure for industrial distributor type IN						
1076.290						
Rittal wall-mounted distributor type SV						
9665.825; 9665.835; 9665.845						



## Cable entry plate Metal Type 149/140

RoHS  
compliant



-22 to +194 °F



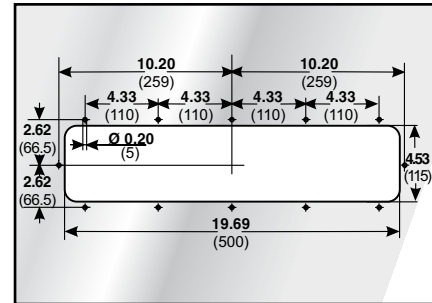
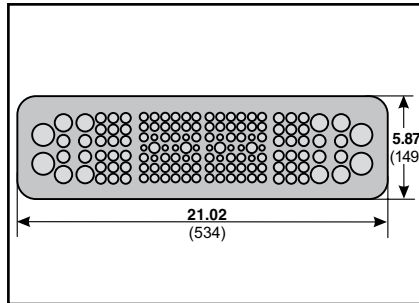
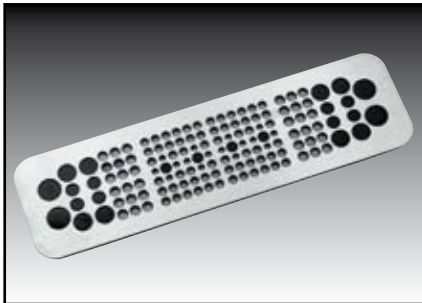
Plate: See article  
Seal: NBR/EPDM



IP 65

Efficient connection technology for terminal housings and control cabinets for tool-free introduction of actuators, sensors, measuring and control instrumentation, optoelectronics, pneumatic lines and drive technology into a control housing. KDPs of product group 149 can be fitted directly into the standard cut-outs of RITTAL cabinets.

The stainless steel version is particularly suitable for application in the food and chemical areas. Integrated threaded bolts mean that no screws are visible from outside. Mounting set included in delivery.






KDP 149/140...

Type	Order no.	Color	Openings Total	Openings Quantity / Ø	Material Plate	Pack qty
KDP 149/140 V4A	87663088	smoothed	140	16 / 0.14 - 0.24 inch	V4A (1.4571)	1
				64 / 0.18 - 0.33 inch		
				36 / 0.24 - 0.39 inch		
				4 / 0.31 - 0.47 inch		
				8 / 0.35 - 0.55 inch		
				8 / 0.55 - 0.71 inch		
				4 / 0.71 - 0.98 inch		
Corresponds to Rittal flange plate size 5						
Cable entry plate matching						
Rittal compact control cabinet type AE						
1039.500; 1058.500; 1060.500; 1073.500; 1076.500; 1077.500; 1090.500; 1180.500; 1260.500; 1280.500;						
1339.500; 1360.500; 1376.500						
Rittal wall-mounted enclosure type EL						
1919.500; 1920.500; 1926.500						
Rittal wall-mounted enclosure / distributor type DK						
7011.535; 7012.535; 7013.535; 7014.535; 7641.00; 7643.000; 7644.000; 7645.000						
Rittal module enclosure, compact enclosure, Toptec type CS						
9772.111; 9772.115						
Rittal empty enclosure for industrial distributor type IN						
1076.290						
Rittal wall-mounted distributor type SV						
9665.825; 9665.835; 9665.845						



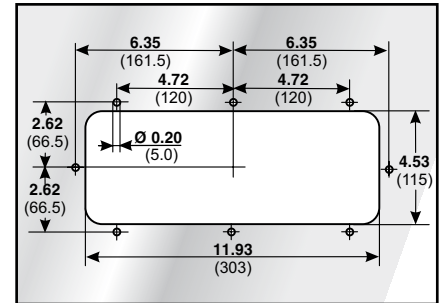
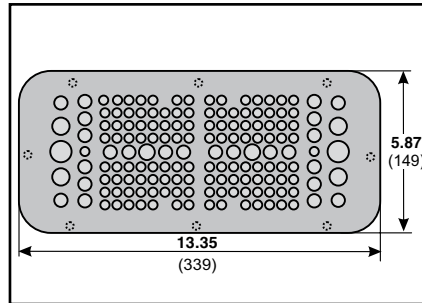
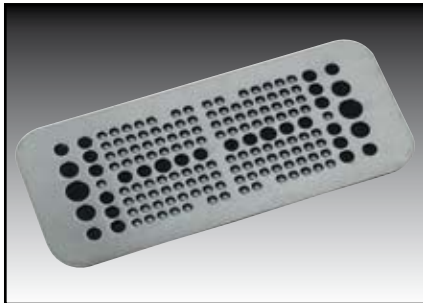
# Cable entry plate KDP Metal

## Cable entry plate Metal Type 149/158 RoHS compliant

-  -22 to +194 °F
-  Plate: See article  
Seal: NBR/EPDM
-  IP 65

Efficient connection technology for terminal housings and control cabinets for tool-free introduction of actuators, sensors, measuring and control instrumentation, optoelectronics, pneumatic lines and drive technology into a control housing. KDPs of product group 149 can be fitted directly into the standard cut-outs of RITTAL cabinets.

The stainless steel version is particularly suitable for application in the food and chemical areas. Integrated threaded bolts mean that no screws are visible from outside. Mounting set included in delivery.



KDP 149/158...

Type	Order no.	Color	Openings Total	Openings Quantity / Ø	Material Plate	Pack qty
KDP 149/158 V4A	87663068	smoothed	158	126 / 0.14 - 0.24 inch 24 / 0.24 - 0.39 inch 6 / 0.31 - 0.47 inch 2 / 0.47 - 0.71 inch	V4A (1.4571)	1
Corresponds to Rittal flange plate size 4						
Cable entry plate matching						
Rittal compact control cabinet type AE						
1045.500; 1050.500; 1057.500; 1100.500; 1110.500; 1114.500; 1130.500; 1213.500; 1338.500; 1350.500						
Rittal module enclosure, compact enclosure, Topotec type CS						
9751.125; 9751.145; 9751.165; 9752.125; 9771.111; 9771.115; 9772.111; 9772.115; 9774.200; 9774.210; 9774.250; 9774.400; 9774.410; 9774.450; 9775.100; 9775.200; 9775.300; 9775.400						
Rittal wall-mounted distributor type SV						
9665.815; 9665.855						

# Cable entry plate Metal Type 149/292

RoHS  
compliant



-22 to +194 °F



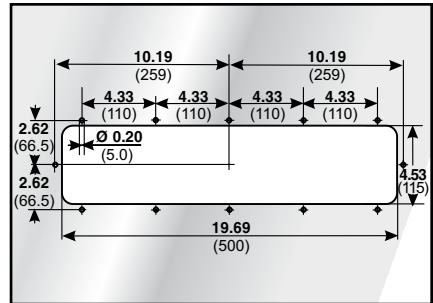
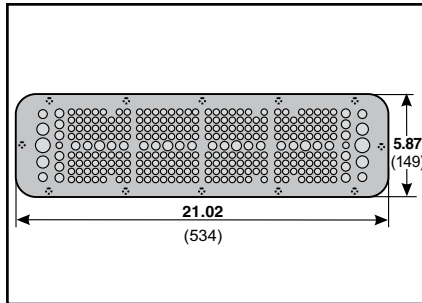
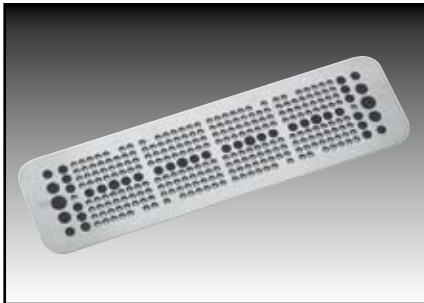
Plate: See article  
Seal: NBR/EPDM



IP 65

Efficient connection technology for terminal housings and control cabinets for tool-free introduction of actuators, sensors, measuring and control instrumentation, optoelectronics, pneumatic lines and drive technology into a control housing. KDPs of product group 149 can be fitted directly into the standard cut-outs of RITTAL cabinets.

The stainless steel version is particularly suitable for application in the food and chemical areas. Integrated threaded bolts mean that no screws are visible from outside. Mounting set included in delivery.



KDP 149/292...

Type	Order no.	Color	Openings Total	Openings Quantity / Ø	Material Plate	Pack qty
KDP 149/292 V4A	87663066	smoothed	292	250 / 0.14 - 0.24 inch 32 / 0.24 - 0.39 inch 8 / 0.31 - 0.47 inch 2 / 0.47 - 0.71 inch	V4A (1.4571)	1
Corresponds to Rittal flange plate size 5						
Cable entry plate matching						
Rittal compact control cabinet type AE						
1039.500; 1058.500; 1060.500; 1073.500; 1076.500; 1077.500; 1090.500; 1180.500; 1260.500; 1280.500;						
1339.500; 1360.500; 1376.500						
Rittal wall-mounted enclosure type EL						
1919.500; 1920.500; 1926.500						
Rittal wall-mounted enclosure / distributor type DK						
7011.535; 7012.535; 7013.535; 7014.535; 7641.00; 7643.000; 7644.000; 7645.000						
Rittal module enclosure, compact enclosure, Toptec type CS						
9772.111; 9772.115						
Rittal empty enclosure for industrial distributor type IN						
1076.290						
Rittal wall-mounted distributor type SV						
9665.825; 9665.835; 9665.845						

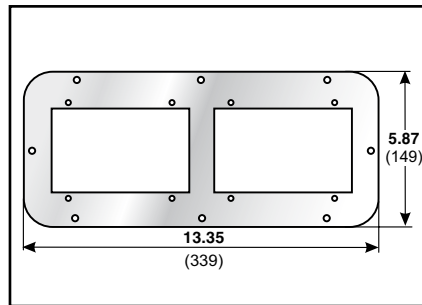
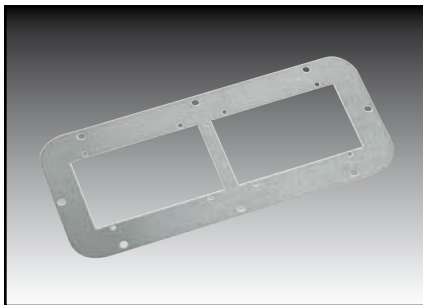


# Cable entry plate KDP Metal

## Adapter plate Type 149/100/2 RoHS compliant

See article

KDP AP adapter plates can be fitted directly into the standard cut-outs of RITTAL cabinets. They serve to hold the cable entry plate of product group 100. Unused adapter positions can be closed off using blanking plates of type KDP BP.



KDP AP 149/100/2...

Type	Order no.	Color	Location spaces	Openings Quantity / Ø	Material Plate	Pack qty
KDP AP 149/100/2 V4A	87663080	smoothed	2	2 x PG 100	V4A (1.4571)	1
Corresponds to Rittal flange plate size 4						
Cable entry plate matching						
Rittal compact control cabinet type AE						
1045.500; 1050.500; 1057.500; 1100.500; 1110.500; 1114.500; 1130.500; 1213.500; 1338.500; 1350.500						
Rittal module enclosure, compact enclosure, Toptec type CS						
9751.125; 9751.145; 9751.165; 9752.125; 9771.111; 9771.115; 9772.111; 9772.115; 9774.200; 9774.210;						
9774.250; 9774.400; 9774.410; 9774.450; 9775.100; 9775.200; 9775.300; 9775.400						
Rittal wall-mounted distributor type SV						
9665.815; 9665.855						
matching cable entry plate:						
KDP 100/30 V4A; KDP 100/30B V4A; KDP 100/40 V4A; KDP 100/56 V4A; KDP 100/56B V4A; KDP 100/56C V4A						
matching blanking plate:						
KDP BP 100/145 V4A						



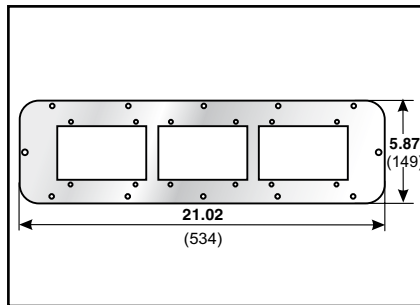
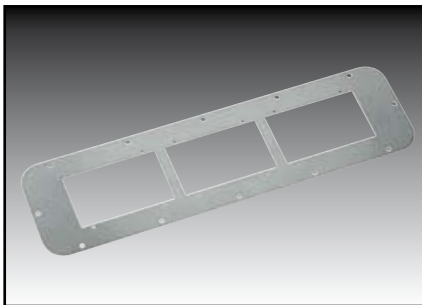
## Adapter plate Type 149/100/3

RoHS  
compliant



See article

KDP AP adapter plates can be fitted directly into the standard cut-outs of RITTAL cabinets. They serve to hold the cable entry plate of product group 100. Unused adapter positions can be closed off using blanking plates of type KDP BP.



KDP AP 149/100/3...

Type	Order no.	Color	Location spaces	Openings Quantity / Ø	Material Plate	Pack qty
KDP AP 149/100/3 V4A	87663082	smoothed	3	3 x PG 100	V4A (1.4571)	1
Corresponds to Rittal flange plate size 5						
Adapter plate matches						
Rittal compact control cabinet type AE						
1039.500; 1058.500; 1060.500; 1073.500; 1076.500; 1077.500; 1090.500; 1180.500; 1260.500; 1280.500;						
1339.500; 1360.500; 1376.500						
Rittal wall-mounted enclosure type EL						
1919.500; 1920.500; 1926.500						
Rittal wall-mounted enclosure / distributor type DK						
7011.535; 7012.535; 7013.535; 7014.535; 7641.00; 7643.000; 7644.000; 7645.000						
Rittal module enclosure, compact enclosure, Toptec type CS						
9772.111; 9772.115						
Rittal empty enclosure for industrial distributor type IN						
1076.290						
Rittal wall-mounted distributor type SV						
9665.825; 9665.835; 9665.845						
matching cable entry plate:						
KDP 100/30 V4A; KDP 100/30B V4A; KDP 100/40 V4A; KDP 100/56 V4A; KDP 100/56B V4A; KDP 100/56C V4A						
matching blanking plate:						
KDP BP 100/145 V4A						

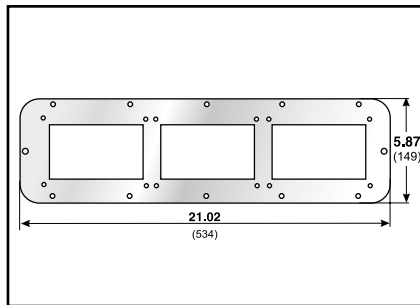
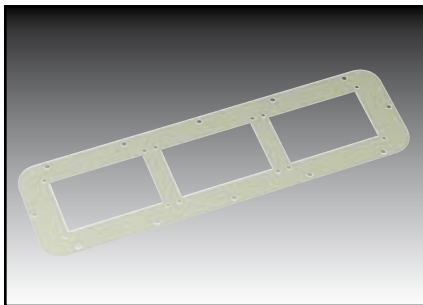


# Cable entry plate KDP Metal

## Adapter plate Type 149/105/3 RoHS compliant

See article

KDP AP adapter plates can be fitted directly into the standard cut-outs of RITTAL cabinets. They serve to hold the cable entry plate of product group 100. Unused adapter positions can be closed off using blanking plates of type KDP BP. The stainless steel version is particularly suitable for application in the food and chemical areas. Integrated threaded bolts mean that no screws are visible from outside. Mounting set included in delivery.



KDP AP 149/105/3...

Type	Order no.	Color	Location spaces	Openings Quantity / Ø	Material Plate	Pack qty
KDP AP 149/105/3 St	87663084	RAL 7035	3	3 x PG 105	Steel (1.1203)	1
Corresponds to Rittal flange plate size 5						
Cable entry plate matching						
Rittal compact control cabinet type AE						
1039.500; 1058.500; 1060.500; 1073.500; 1076.500; 1077.500; 1090.500; 1180.500; 1260.500; 1280.500;						
1339.500; 1360.500; 1376.500						
Rittal wall-mounted enclosure type EL						
1919.500; 1920.500; 1926.500						
Rittal wall-mounted enclosure / distributor type DK						
7011.535; 7012.535; 7013.535; 7014.535; 7641.00; 7643.000; 7644.000; 7645.000						
Rittal module enclosure, compact enclosure, Toptec type CS						
9772.111; 9772.115						
Rittal empty enclosure for industrial distributor type IN						
1076.290						
Rittal wall-mounted distributor type SV						
9665.825; 9665.835; 9665.845						
matching cable entry plate:						
KDP 105/12 ALU; KDP 105/15 ALU and V2A; KDP 105/32 ALU and V2A						
matching blanking plate:						
KDP BP 105/155 ALU and V2A						

## Blanking plate type 100/145

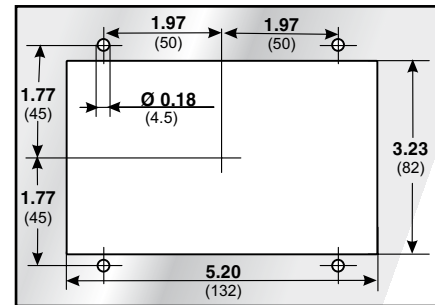
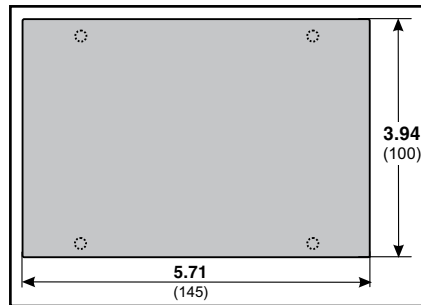
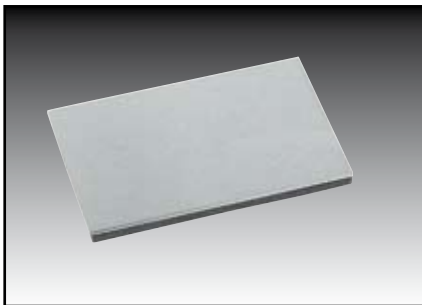
RoHS  
compliant



See article

Blanking plate for closing off unused adapter positions and cut-outs.

The stainless steel version is particularly suitable for application in the food and chemical areas. Integrated threaded bolts mean that no screws are visible from outside. Mounting set included in delivery.

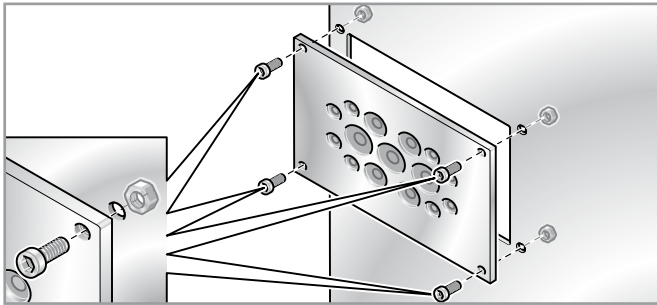


KDP BP 100/145...

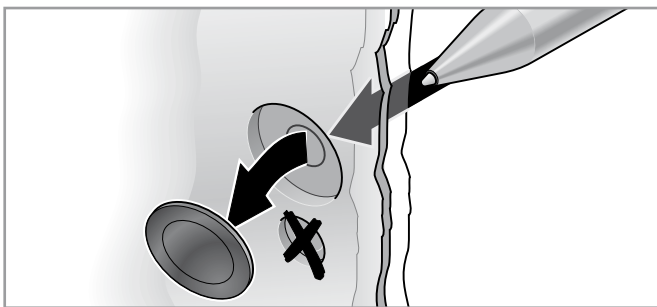
Type	Order no.	Color	Material Plate	Pack qty
KDP BP 100/145 V4A	87663090	smoothed	V4A (1.4571)	1
In connection with adapter plate KDP AP 149/100/2 (Ord. No. 87663080) matching				
Rittal compact control cabinet type AE				
1045.500; 1050.500; 1057.500; 1100.500; 1110.500; 1114.500; 1130.500; 1213.500; 1338.500; 1350.500				
Rittal module enclosure, compact enclosure, Toptec type CS				
9751.125; 9751.145; 9751.165; 9752.125; 9771.111; 9771.115; 9772.111; 9772.115; 9774.200; 9774.210; 9774.250; 9774.400; 9774.410; 9774.450; 9775.100; 9775.200; 9775.300; 9775.400				
Rittal wall-mounted distributor type SV				
9665.815; 9665.855				
In connection with adapter plate KDP AP 149/100/3 (Ord. No. 87663082) matching				
Rittal compact control cabinet type AE				
1039.500; 1058.500; 1060.500; 1073.500; 1076.500; 1077.500; 1090.500; 1180.500; 1260.500; 1280.500; 1339.500; 1360.500; 1376.500				
Rittal wall-mounted enclosure type EL				
1919.500; 1920.500; 1926.500				
Rittal wall-mounted enclosure / distributor type DK				
7011.535; 7012.535; 7013.535; 7014.535; 7641.000; 7643.000; 7644.000; 7645.000				
Rittal module enclosure, compact enclosure, Toptec type CS				
9772.111; 9772.115				
Rittal empty enclosure for industrial distributor type IN				
1076.290				
Rittal wall-mounted distributor type SV				
9665.825; 9665.835; 9665.845				



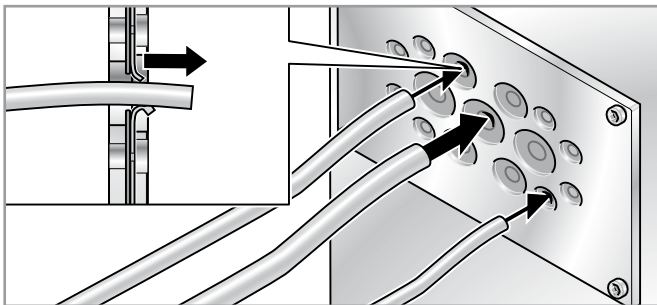
## Mounting of type KDP x/x ALU



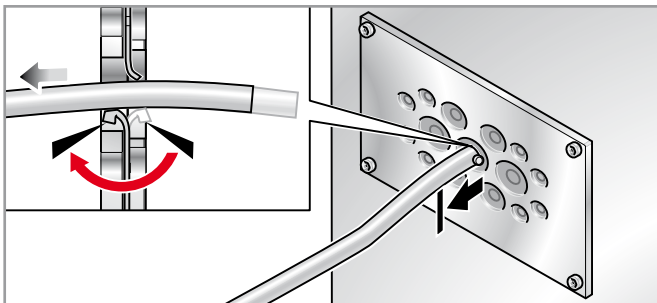
Set cable entry plate onto the cut-out and screw down.



Where necessary, remove the optional black cover from the locking plate. To do so, press the opening through from the rear until the cover falls out.



Select an opening appropriate for the cable diameter and push the cable through the opening from the front. The indicator becomes visible on the rear side. Pull cable through to desired length.

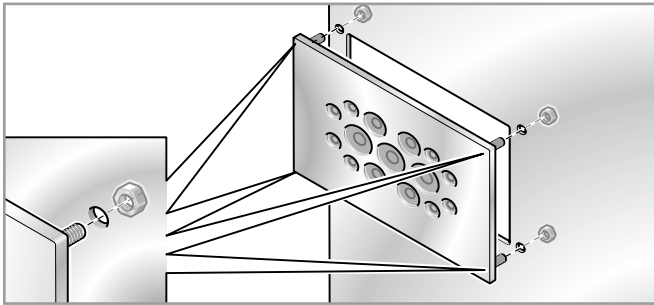


Retract cable approx. 0.39-0.59 inch until the indicator on the rear is no longer visible. Depending on cable diameter and insertion size, the indicator may well become visible on the front side again.

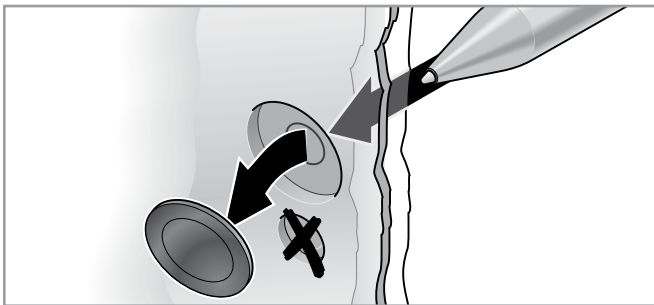


# Cable entry plate KDP Metal

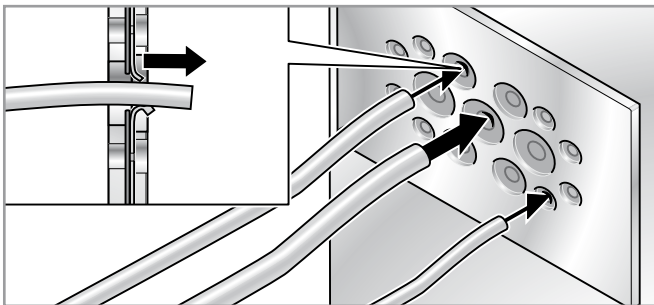
## Mounting of type KDP x/x V4A



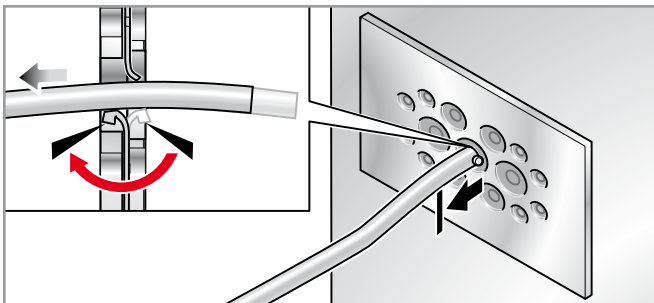
Set cable entry plate onto the cut-out and screw down from the rear.



Where necessary, remove the optional black cover from the locking plate. To do so, press the opening through from the rear until the cover falls out.



Select an opening appropriate for the cable diameter and push the cable through the opening from the front. The indicator becomes visible on the rear side. Pull cable through to desired length.



Retract cable approx. 0.39-0.59 inch until the indicator on the rear is no longer visible. Depending on cable diameter and insertion size, the indicator may well become visible on the front side again.