

Handles are available for on/off and throttling control of Crane resilient seated butterfly valves. These handles can be used for manual actuation of 2" to 12" valves at 200 psi and for 2" to 6" valves at 285 psi. For valves larger than 8", excessive operator effort and extreme handle reaction to internal valve forces are possible. In these cases, a gear operator is recommended for safe operation.

## Features

The rugged construction of Crane handles makes them ideally suited for manually actuating smaller valves. The latchplate permits the valve to be locked in any of the 10 positions on DIT handles or in any position on IOL handles.

## Specifications

**DIT** Mechanically locks the valve in any of the 10 positions from 0° to 90° in 10° increments

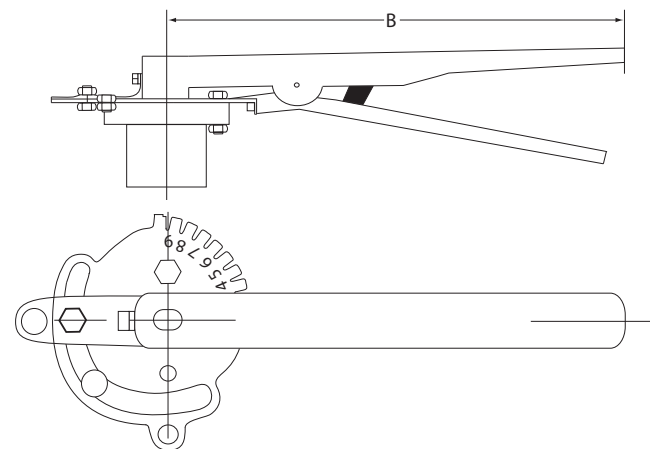
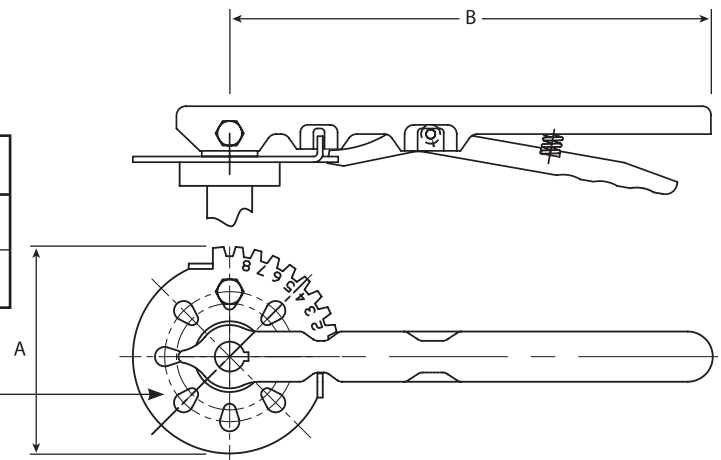
**DIT/IOL** Can hold the valve in intermediate positions (32°, 68°, etc.) and can also be locked in 0° and 90° positions



## Dimensions and Weights

Valve Size		A	B	Weight	
				DIT	DIT/IOL
2-6	in.	2.25	10.5	1.8	2.0
50-150	mm	57.15	266.7	0.8	0.9
8-12	in.	3.34	14.0	4.0	-
200-300	mm	84.84	355.6	1.8	-

Plates are adaptable for ISO or standard mounting flange.



Gear operators can be used for on/off and throttling control of Crane resilient seated butterfly valves. All models are weatherproof and usable for above ground or buried service. For manual operation of valves, gear operators are required for valves 14" and larger and are recommended for valves 8" and larger.

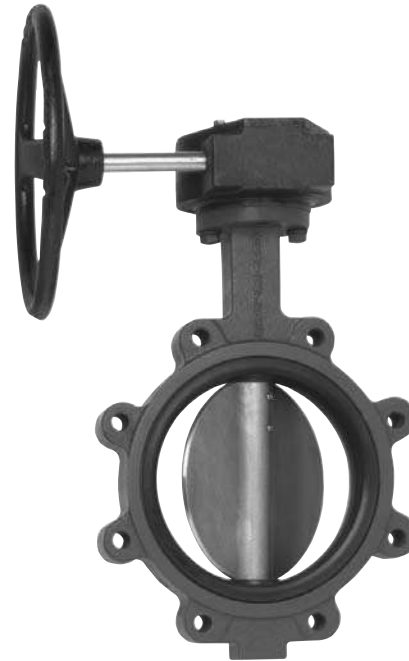
## Features

Gear operators from Crane are 90° manual actuators, and they come with a handwheel, chainwheel, or square nut input device. The durable housing completely encloses the worm gear (on the input shaft) and the segment gear (on the output). Adjustable stops are standard and factory set when installed at the factory. Fully adjustable memory stops are available as an option. A position indicator is standard on all models for above ground service. An optional version is available for buried service applications. Contact customer service for more information.

## Specifications

**Operation** Handwheel or chainwheel (12" standard, others available) or 2" square nut. Input shaft extension available.

**Mounting** Available with bolt patterns and bore/keyway for direct mount to all 2" through 30" Crane resilient seated butterfly valves. Gears are drilled for ISO pattern through 24". Contact factory for 30" and above.

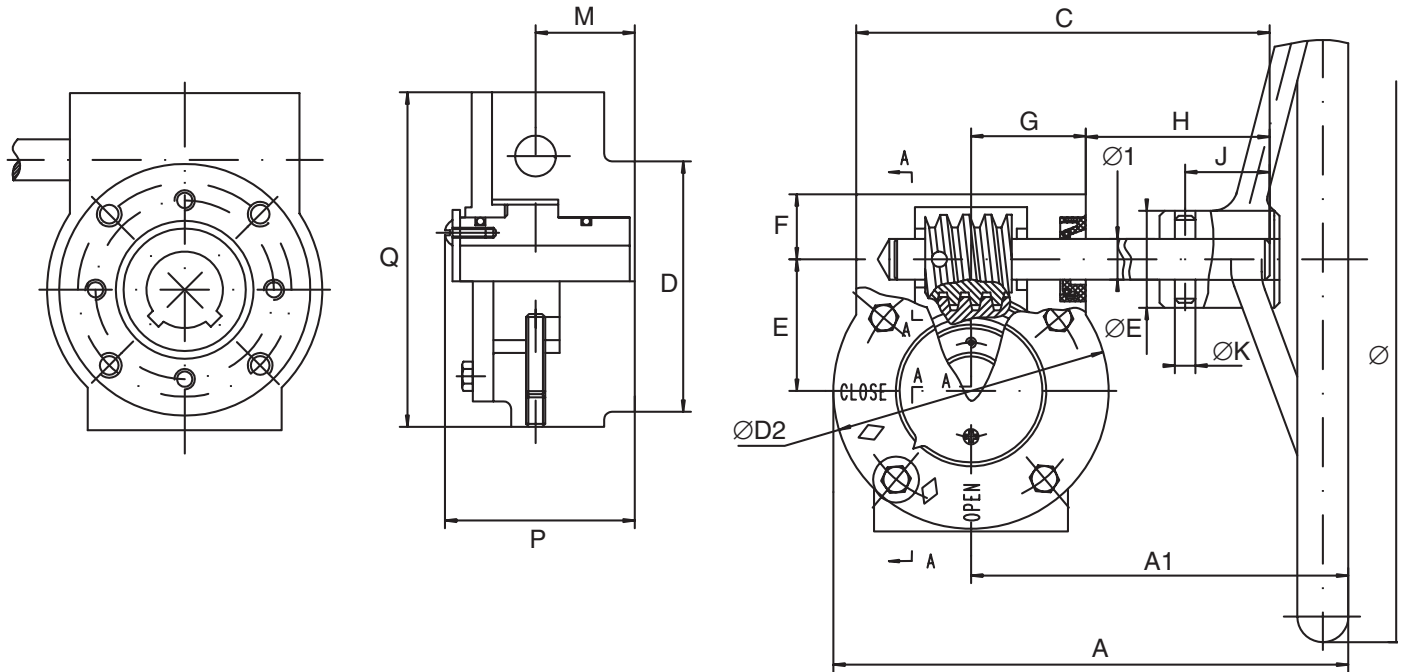


## Dimensions and Weights

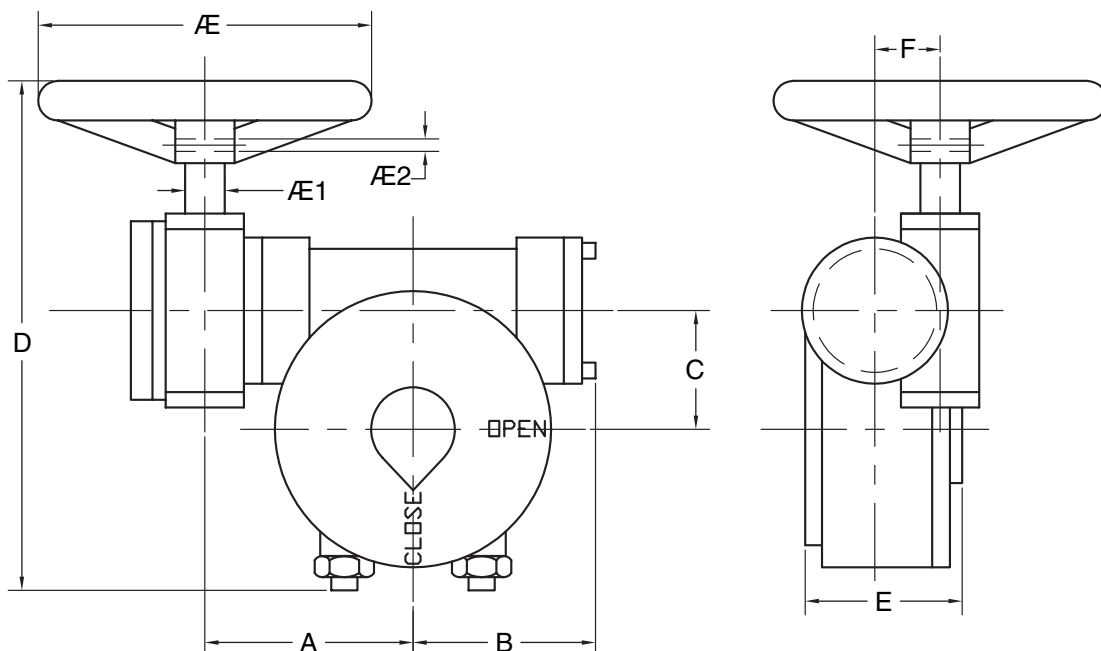
Valve Size		Oper.	A	A1	C	E	F	G	H	Ø1	J	ØK	M	D	P	Q	Ø	ØD2	Ø3	Wt. (Kg.)
2-6 50-150	in. mm	XJ30	12.56 314.00	9.52 238.00	10.72 268.00	2.52 63.00	14.80 37.00	2.36 59.00	6.00 150.00	0.76 19.00	1.36 34.00	0.24 6.00	1.66 41.50	3.68 92.00	3.36 84.00	7.06 176.50	12.00 300.00	6.08 152.00	1.52 38.00	27.1 (12.3)
8-14 200-350	in. mm	XJ50	12.28 307.00	9.04 226.00	10.60 265.00	3.12 78.00	1.54 38.50	2.74 68.50	5.12 128.00	0.76 19.00	1.36 34.00	0.24 6.00	1.53 38.20	5.60 140.00	3.36 84.00	7.90 197.50	12.00 300.00	6.48 162.00	1.52 38.00	31.7 (14.4)
16-18 400-450	in. mm	XJ80	16.28 407.00	11.08 277.00	13.76 344.00	4.80 120.00	1.60 40.00	4.08 102.00	5.60 140.00	1.00 25.00	1.36 34.00	0.32 8.00	2.28 57.00	7.88 197.00	5.00 125.00	11.60 290.00	18.00 450.00	10.40 260.00	2.00 50.00	77.4 (35.2)
Valve Size		Oper.	A	B	C	D	E	F	Ø	Ø1	Ø2	Wt. (Kg.)								
20 500	in. mm	XJ300	7.40 185.00	6.40 160.00	4.40 110.00	18.90 473.00	4.60 115.00	2.50 63.00	18.00 450.00	0.98 25.00	0.32 8.00	121.0 (55.0)								
24 600	in. mm	XJ300	7.40 185.00	6.40 160.00	5.00 125.00	20.00 500.00	4.80 120.00	2.50 63.00	18.00 450.00	0.98 25.00	0.32 8.00	132.0 (60.0)								
30 750	in. mm	DG 50 202	10.60 265.00	6.60 165.00	6.40 160.00	21.80 545.00	5.12 128.00	3.12 78.00	18.00 450.00	0.98 25.00	0.32 8.00	198.0 (90.0)								
36 900	in. mm	DG 160 466	11.12 278.00	8.04 201.00	7.84 196.00	21.44 611.00	10.32 258.00	5.04 126.00	17.40 435.00	0.98 25.00	0.32 8.00	424.6 (193.0)								
42 1050	in. mm	DG 160 466	16.72 418.00	10.20 255.00	9.60 240.00	25.56 611.00	12.40 310.00	5.04 126.00	17.40 435.00	0.98 25.00	0.32 8.00	792.0 (360.0)								
48 1200	in. mm	DG 160 466	16.72 418.00	10.20 255.00	9.60 240.00	25.56 639.00	12.40 310.00	5.04 126.00	17.40 435.00	0.98 25.00	0.32 8.00	792.0 (360.0)								

Some sizes require different operators, please consult factory.

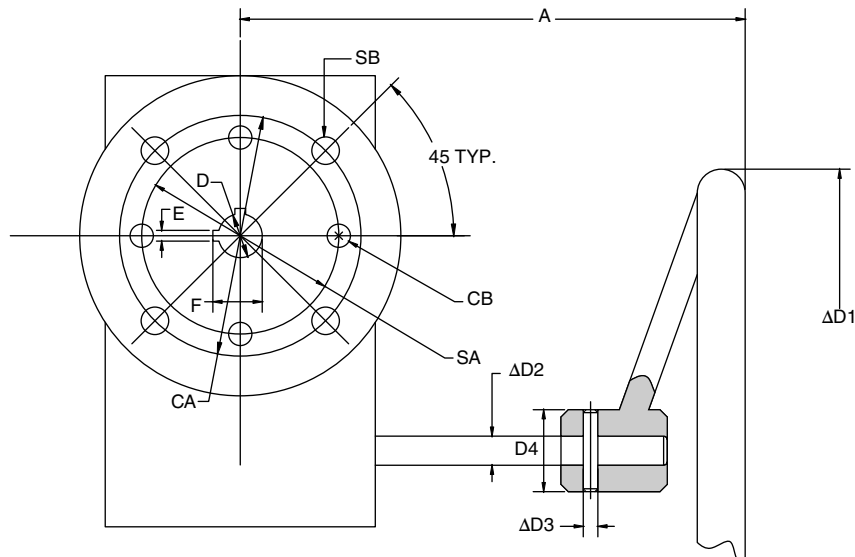
## XJ30-50-80



## XJ300-BA800-3D-60-3D-120



## Gear Operator Drilling Patterns



## Dimensions

Valve Size	Operator Model	CA	CB	SA	SB	D	D1	D2	D3	D4	A	E	F
2 in. 50 mm	XJ30	2.25 57.15	M6-1	2.76 70.00	M8-1.25	0.50 12.70	11.81 300.00	0.75 19.00	0.24 6.00	1.50 38.00	9.37 238.00	0.13 3.18	0.56 14.30
3 in. 75 mm	XJ30	2.25 57.15	M6-1	2.76 70.00	M8-1.25	0.50 12.70	11.81 300.00	0.75 19.00	0.24 6.00	1.50 38.00	9.37 238.00	0.13 3.18	0.56 14.30
4 in. 100 mm	XJ30	2.75 69.85	M8-1.25	2.76 70.00	M8-1.25	0.63 15.90	11.81 300.00	0.75 19.00	0.24 6.00	1.50 38.00	9.37 238.00	0.13 3.18	0.72 18.30
5 in. 125 mm	XJ30	2.75 69.85	M8-1.25	2.76 70.00	M8-1.25	0.75 19.05	11.81 300.00	0.75 19.00	0.24 6.00	1.50 38.00	9.37 238.00	0.13 3.18	0.84 21.40
6 in. 150 mm	XJ30	2.75 69.85	M8-1.25	2.76 70.00	M8-1.25	0.75 19.05	11.81 300.00	0.75 19.00	0.24 6.00	1.50 38.00	9.37 238.00	0.13 3.18	0.84 21.40
8 in. 200 mm	XJ50	3.50 88.90	M12-1.75	4.02 102.00	M10-1.5	0.87 22.20	11.81 300.00	0.75 19.00	0.24 6.00	1.50 38.00	8.89 226.00	0.19 4.76	0.97 24.50
10 in. 250 mm	XJ50	3.50 88.90	M12-1.75	4.02 102.00	M10-1.5	1.13 28.60	11.81 300.00	0.75 19.00	0.24 6.00	1.50 38.00	8.89 226.00	0.25 6.35	1.25 31.80
12 in. 300 mm	XJ50	4.25 107.95	M12-1.75	4.02 102.00	M10-1.5	1.25 31.80	11.81 300.00	0.75 19.00	0.24 6.00	1.50 38.00	8.89 226.00	0.25 6.35	1.39 35.00
14 in. 350 mm	XJ50	4.25 107.95	M12-1.75	4.02 102.00	M10-1.5	1.25 31.80	11.81 300.00	0.75 19.00	0.24 6.00	1.50 38.00	8.89 226.00	0.25 6.35	1.39 35.00
16 in. 400 mm	XJ80	6.25 158.75	M18-2.5	6.50 165.00	M20-2.5	1.31 33.30	18.00 450.00	0.98 25.00	0.32 8.00	1.99 50.00	10.90 277.00	0.31 7.90	1.49 37.30
18 in. 450 mm	XJ80 (42/44)	6.25 158.75	M18-2.5	6.50 165.00	M20-2.5	1.50 38.10	18.00 450.00	0.98 25.00	0.32 8.00	1.99 50.00	10.90 277.00	0.38 9.53	1.69 42.80
18 in. 450 mm	XJ300 (21/23)	6.25 158.75	M18-2.5	6.50 165.00	M20-2.5	1.63 41.30	18.00 450.00	0.98 25.00	0.32 8.00	1.99 50.00	12.64 321.00	0.38 9.53	1.81 46.00
20 in. 500 mm	XJ300	6.25 158.75	M18-2.5	6.50 165.00	M20-2.5	1.63 41.30	18.00 450.00	0.98 25.00	0.32 8.00	1.99 50.00	12.64 321.00	0.38 9.53	1.81 46.00
24 in. 600 mm	XJ300 (42/44)	8.50 215.90	M20-2.5	6.50 165.00	M20-2.5	2.00 50.80	18.00 450.00	0.98 25.00	0.32 8.00	1.99 50.00	13.19 335.00	0.50 12.70	2.24 56.80
24 in. 600 mm	XJ300 (21/23)	8.50 215.90	M20-2.5	6.50 165.00	M20-2.5	2.00 50.80	18.00 450.00	0.98 25.00	0.32 8.00	1.99 50.00	13.19 335.00	0.50 12.70	2.24 56.80