

Fig. 101 - Welded Eye Rod

Size Range — 3/8" thru 1" rod

Material — Carbon Steel

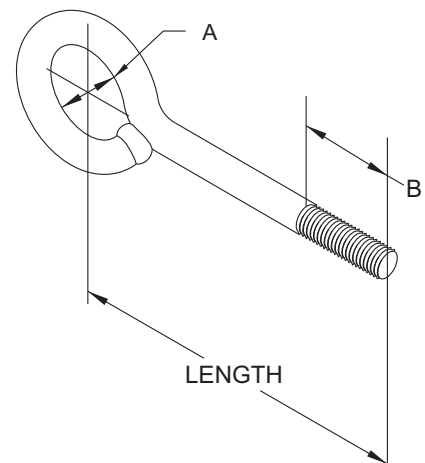
Function — Designed for use as support hanger rod that may be attached directly to structure or to other pipe support product. The welded eye allows for heavier loads.

Finish — Plain

Note — Available in Electro-Galvanized and HDG finish or Stainless Steel materials.

Order By — Figure number, rod size, length and finish

Important Note — "A" dimension should be 1/16" larger than fastener. Please notify factory if larger "A" dimension is needed.



Dimensions				
Rod Size	A	B*	Max. Rec. Load Lbs. for Service Temps.	
			650°F	750°F
3/8	7/16	2½	610	540
1/2	9/16	2½	1130	1010
5/8	13/16	2½	1810	1610
3/4	1	3	2710	2420
7/8	1⅛	3½	3770	3360
1	1¼	4	4960	4420

NOTE: Consult Factory for Additional Sizes.

* Where length is shorter than 10" consult factory for thread length.

Fig. 102 - Eye Rod

Size Range — 3/8" thru 1" rod

Material — Carbon Steel

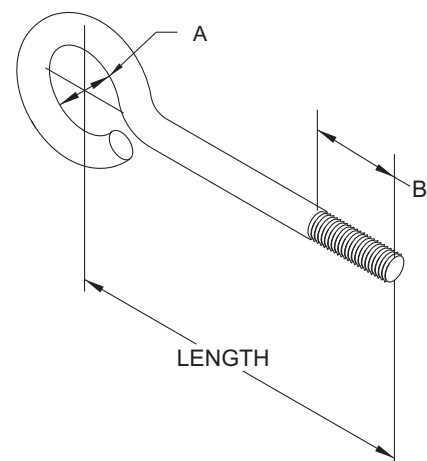
Function — Designed for use as support hanger rod that may be attached directly to structure or to other pipe support product.

Finish — Plain

Note — Available in Electro-Galvanized and HDG finish or Stainless Steel materials.

Order By — Figure number, rod size, length and finish

Important Note — "A" dimension should be 1/16" larger than fastener. Please notify factory if larger "A" dimension is needed.



Dimensions			
Rod Size	A	B*	Max. Rec. Load Lbs. for Service Temps.
			650°F
3/8	7/16	2½	210
1/2	9/16	2½	395
5/8	13/16	2½	630
3/4	1	3	945
7/8	1⅛	3½	1315
1	1¼	4	1735

NOTE: Consult Factory for Additional Sizes.

* Where length is shorter than 10" consult factory for thread length.

Fig. 101L - Linked Welded Eye Rod

Size Range — 3/8" thru 1" rod

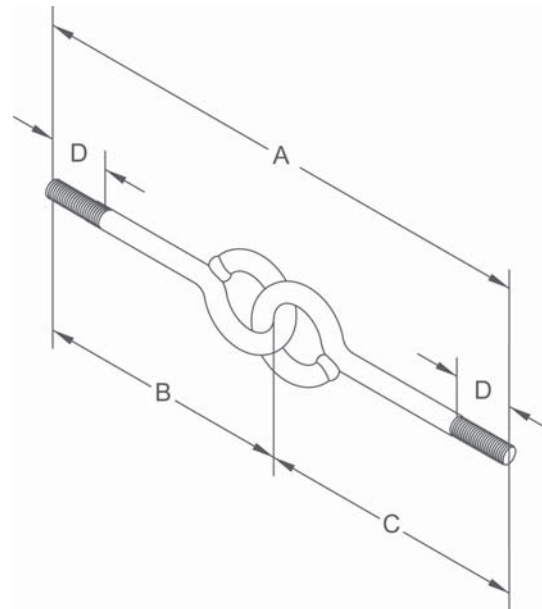
Material — Carbon Steel

Function — Designed for use in a hanger assembly where universal movement is necessary. The welded eye rods allow for heavier loads.

Finish — Plain

Note — Available in Electro-Galvanized and HDG finish or Stainless Steel materials.

Order By — Figure number, rod size, dimension A, B, and C.



Dimensions		
Rod Size	D*	Max. Rec. Load Lbs. for Service Temps. 650°F
3/8	2½	610
1/2	2½	1130
5/8	2½	1810
3/4	3	2710
7/8	3½	3770
1	4	4960

NOTE: Consult Factory for Additional Sizes.

* Where length is shorter than 10" consult factory for thread length.

Fig. 102L - Linked Eye Rod Not Welded

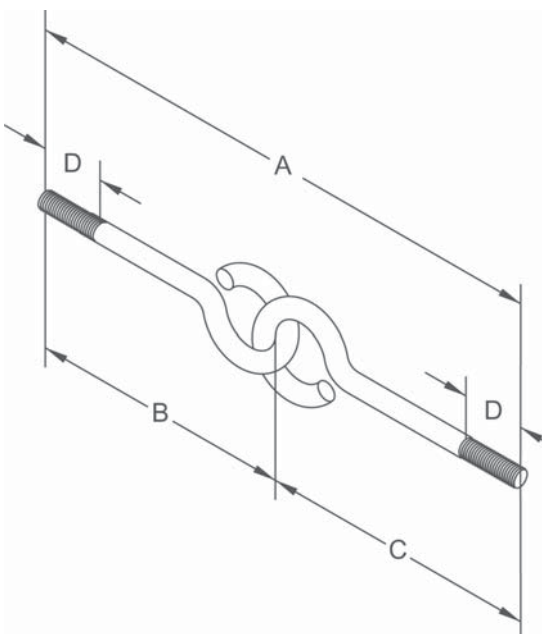
Size Range — 3/8" thru 1" rod

Material — Carbon Steel

Function — Designed for use in a hanger assembly where universal movement is necessary.

Finish — Plain

Note — Available in Electro-Galvanized and HDG finish or Stainless Steel materials.



Dimensions		
Rod Size	D*	Max. Rec. Load Lbs. for Service Temps. 650°F
3/8	2½	240
1/2	2½	440
5/8	2½	705
3/4	3	1050
7/8	3½	1470
1	4	1940

NOTE: Consult Factory for Additional Sizes.

* Where length is shorter than 10" consult factory for thread length.