

Fig. 318 - Pipe Saddle with U-Bolt

Size Range — 4" thru 36" pipe

Material — Carbon Steel

Function — Designed to support horizontal pipe from floor stanchion. U-bolts and hex nuts are provided to hold pipe securely to saddle. To complete floor stanchion, use with Fig. 316 Stand Pipe. For complete floor stanchion with vertical adjustment, use Fig. 319 Threaded Pipe with Adjuster and Fig. 316T Threaded Pipe Stand.

Approvals — Conforms to Federal Specification

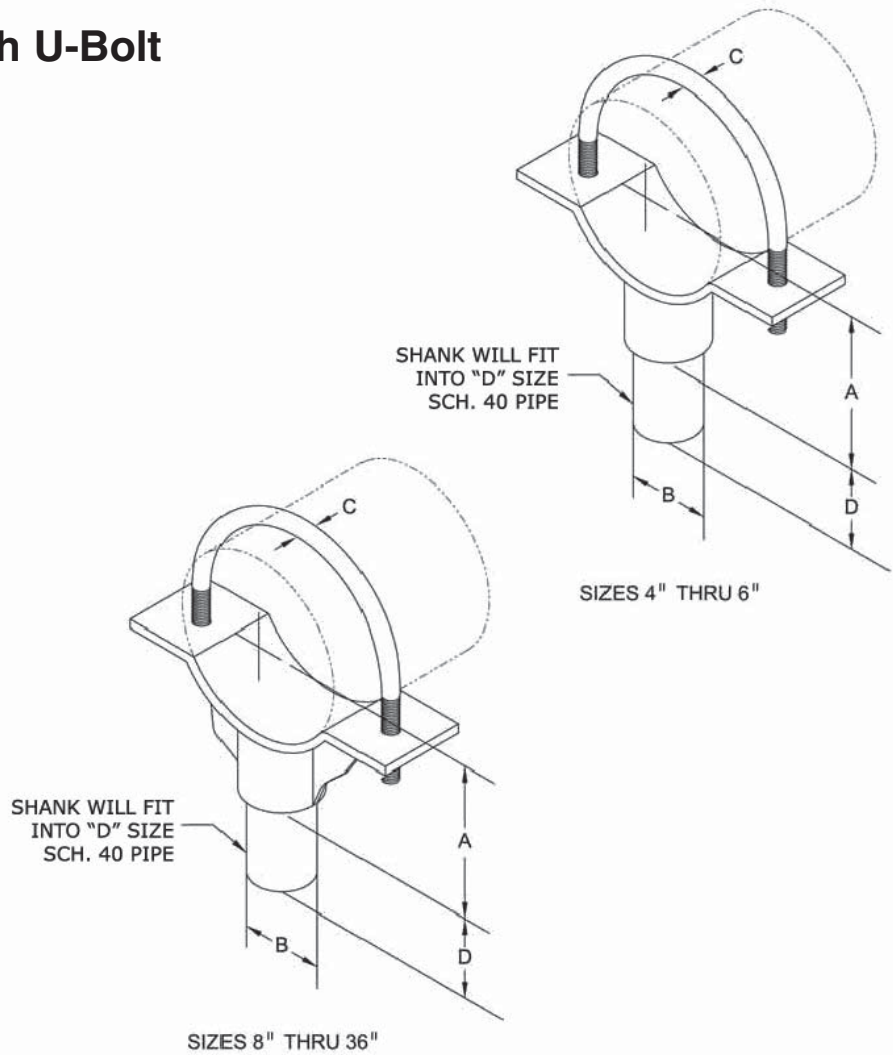
WW-H-171E, Type 38, 4" thru 36", and Manufacturers Standardization Society SP-69, Type 37

Maximum Temperature — 750°F

Finish — Plain

Note — Available in Electro-Galvanized and HDG finish or Stainless Steel materials.

Order By — Figure number and pipe size



Dimensions • Weights

Pipe Size	Max. O.D. Pipe	A	B	C	D	Approx. Wt./100
4	4 ⁷ / ₈	3 ¹³ / ₁₆	2 ³ / ₈	1/2	2 ¹ / ₂	620
5	5 ⁵ / ₈	4 ³ / ₁₆	2 ³ / ₈	1/2	2 ¹ / ₂	660
6	7	4 ⁷ / ₈	2 ³ / ₈	5/8	2 ¹ / ₂	835
8	9 ¹ / ₈	6 ¹⁵ / ₁₆	2 ³ / ₈	5/8	2 ¹ / ₂	1120
10	11 ¹ / ₈	7 ¹⁵ / ₁₆	2 ³ / ₈	3/4	2 ¹ / ₂	1400
12	13 ¹ / ₂	9 ¹ / ₈	2 ³ / ₈	7/8	3	1800
14	14	10 ¹ / ₂	2 ⁷ / ₈	7/8	3	2930
16	16	11 ¹ / ₂	2 ⁷ / ₈	7/8	3	3225
18	18	13 ¹ / ₂	3 ³ / ₄	1	4	3960
20	20	14 ¹ / ₂	3 ³ / ₄	1	4	4309
22	22	15 ¹ / ₂	3 ³ / ₄	1	4	4660
24	24	17 ¹ / ₂	3 ³ / ₄	1	4	5188
26	26	18 ¹ / ₂	3 ³ / ₄	1	4	5520
30	30	20 ⁵ / ₈	3 ³ / ₄	1	4	6948
32	32	21 ⁵ / ₈	3 ³ / ₄	1	4	7327
36	36	23 ⁵ / ₈	3 ³ / ₄	1	4	8046

Fig. 318A - Pipe Saddle with U-Bolt and Threaded Pipe Adjuster

Size Range — 4" thru 36" pipe

Material — Carbon Steel with cast iron reducer

Function — Designed to support horizontal pipe from floor stanchion where vertical adjustment is required. U-bolt and hex nuts are provided to hold pipe securely to saddle. To complete floor stanchion, use with Fig. 316T Threaded Pipe Stand.

Approvals — Conforms to Federal Specification

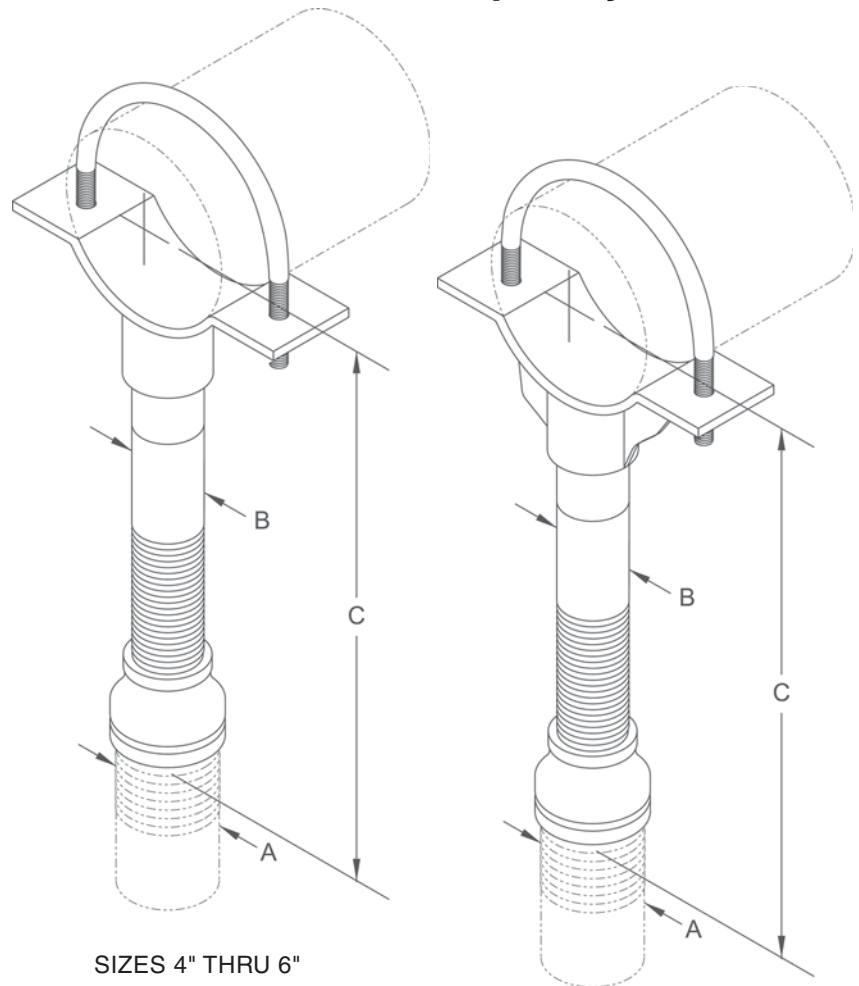
WW-H-171E, Type 38, 4" thru 36", and Manufacturers Standardization Society SP-69, Type 37

Finish — Plain

Note — Available in Electro-Galvanized and HDG finish or Stainless Steel materials.

Order By — Figure number, pipe size, adjuster size and finish

Note — Order with TOLCO® Fig. 316T for complete stanchion support.



SIZES 4" THRU 6"

SIZES 8" THRU 36"

Dimensions • Weights

Pipe Size	A Stand Pipe Size	B Adj. Pipe Size	C Min.	C Max.	Approx. Wt./100
4	3	2½	10¼	14¾	1413
5	3	2½	11¼	15¼	1453
6	3	2½	11¾	16¼	1628
8	3	2½	13¾	18¼	1913
10	3	2½	14¾	19¼	2193
12	3	2½	15¾	20¼	2593
14	4	3	18¾	23¾	4150
16	4	3	19¾	24¾	4445
18	6	4	22¼	26¾	4468
20	6	4	23¼	27¾	6557
22	6	4	24¼	28¾	6908
24	6	4	26½	31	7436
26	6	4	27½	32	7768
30	6	4	29¾	34¼	9196
32	6	4	30¾	35¼	9575
36	6	4	32¾	37¼	10294