

Fig. 33 - Concrete Single Lug Plate

Size Range — 1/2" thru 2" rod

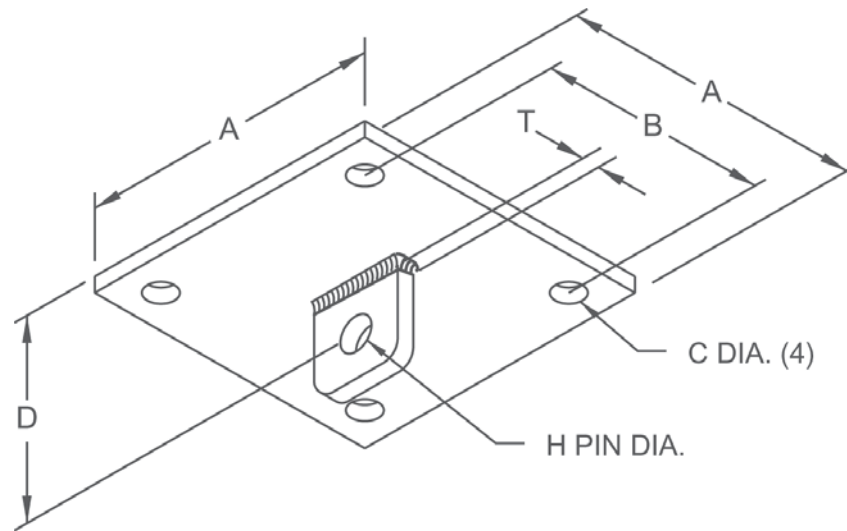
Material — Carbon Steel

Function — Structural attachment to concrete ceiling. Use with Fig. 332 Bridge Clevis to attach to center lug.

Finish — Plain

Note — Available in Electro-Galvanized and HDG finish or Stainless Steel materials.

Order By — Figure number, rod size and finish



Dimensions • Weights

Rod Size	A	B	C	D	H	T	Max. Rec. Load Lbs.*	Approx. Wt./100
1/2	10	8	9/16	1 7/8	5/8	1/4	1130	1115
5/8	10	8	9/16	2	3/4	1/4	1810	1465
3/4	10	8	11/16	2	7/8	3/8	2710	1478
7/8	10	8	11/16	2 3/4	1	3/8	3770	2195
1	12	8	13/16	2 3/4	1 1/8	1/2	4960	3185
1 1/4	12	8	15/16	4	1 3/8	5/8	8000	4385
1 1/2	12	8	1 1/8	4	1 5/8	3/4	11630	4568
1 3/4	12	8	1 3/8	4 1/4	1 7/8	3/4	15700	5578
2	12	8	1 3/8	4 1/4	2 1/4	3/4	20630	5820

* Based on allowable stresses shown in the ANSI code for pressure piping.