



**FIG. 343•** **Welding Lug  
Long and Short Radius**

MSS-SP-69 Type 57 OSHPD

Rod Size	List Price		UPC		Approx. Wt./100		Pkg
	Short Radius	039923-	Long Radius	039923-	Short Radius	Long Radius	
1/2	\$ 7.60	023964	\$ 9.49	189301	33	54	BULK
5/8	7.60	023971	9.49	045782	32	53	BULK
3/4	8.84	023988	11.67	045799	64	104	BULK
7/8	10.43	023995	12.30	045805	74	101	BULK
1	24.56	024008	27.65	045812	121	164	BULK
1 1/8	49.22	024015	55.15	045829	160	203	BULK
1 1/4	49.22	024022	55.15	045836	288	359	BULK
1 1/2	100.39	024039	110.54	045843	469	629	BULK
1 3/4	94.72	024046	104.24	045850	453	613	BULK
2	158.38	024053	128.18	045867	718	782	BULK



Fig. 405

**FIG. 405•** **Anchor Hold Down Clamp**

Consult factory for size and pricing information

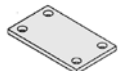


Fig. 406

**FIG. 406•** **Anchor Base Plate**

Consult factory for size and pricing information



**FIG. 420•** **Pipe Alignment Guide  
Long Traverse**

Consult factory for size and pricing information



**FIG. 421•** **Pipe Alignment Guide  
Intermediate Traverse**

Consult factory for size and pricing information



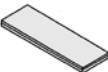
**FIG. 422•** **Light Duty Pipe Alignment Guide**

Consult factory for size and pricing information



**FIG. 422C•** **Copper Tubing Alignment Guide**

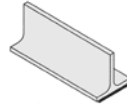
Consult factory for size and pricing information



**FIG. 425•** **PTFE Bearing Pads and Strips**

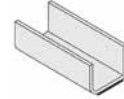
DESCRIPTION	OVERALL THICKNESS IN INCHES	PRICE AND WEIGHT
		On application. All sizes made to order. Overall thickness includes PTFE and backing plate: Backing plate may be Carbon Steel (CS), Stainless Steel (SS), Galvanized Steel (GS) or Aluminum (AL) <b>PTFE always 3/32" thick.</b>
1010	7/32	
1025	11/32	
1050	19/32	
1075	27/32	
10100	1 3/32	

• Non-cancelable and non-returnable



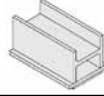
**FIG. 426•** **T-Pipe Slide (PTFE)**

Consult factory for size and pricing information



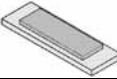
**FIG. 427•** **U-Pipe Slide (PTFE)**

Consult factory for size and pricing information



**FIG. 428•** **H-Pipe Slide (PTFE)**

Consult factory for size and pricing information



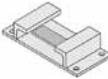
**FIG. 429•** **Slide Plate (PTFE)**

Consult factory for size and pricing information



**FIG. 430•** **Guided Slide Plate (PTFE)**

Consult factory for size and pricing information



**FIG. 431•** **Hold Down  
Guided Slide Plate (PTFE)**

Consult factory for size and pricing information



**FIG. 432•** **Slide Plate For Tolstrut  
Channel (PTFE)**

Consult factory for size and pricing information



**FIG. 500** **Spring Cushion**

Consult factory for size and pricing information



**FIG. 506** **Vibration Isolation - Springs**

Consult factory for size and pricing information