



PE X STEEL FITTINGS

SERVICE HEAD ADAPTERS PE Compression x Male Pipe Thread x Female Pipe Thread

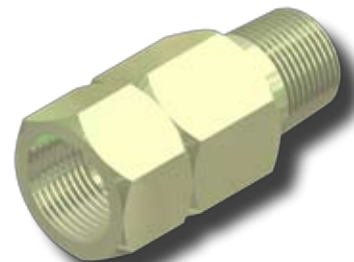
PE SIZE	WALL	MPT	FPT	PART NUMBER	PART NUMBER (Zinc Plated)
1/4" CTS (3/8" OD)	.062	3/4"	3/4"	9942-00-0187-00	
1/2" CTS (5/8" OD)	.090	1/2"	3/4"	0442-00-0912-05	0442-95-0912-05
		3/4"	3/4"	0442-00-0913-05‡	9942-99-0089-00
		3/4"	1"	0442-00-0913-06	0442-95-0913-06
		1"	3/4"	0442-00-0914-05	0442-95-0914-05
		1"	1"	0442-00-0914-06	0442-95-0914-06
3/4" CTS (7/8" OD)	.090	1 1/4"	3/4"	0442-00-0915-05	0442-95-0915-05
		3/4"	1"	0642-00-0913-06	0642-95-0913-06
		1"	1"	0642-00-0914-06	0642-95-0914-06
1" CTS (1 1/8" OD)	.099/.101	1"	1 1/4"	0642-00-0914-07	0642-95-0914-07
		3/4"	1 1/4"	0842-00-0913-07‡	0842-95-0913-07
		1 1/4"	1 1/4"	0842-00-0915-07	0842-95-0915-07
	.090	3/4"	1 1/4"	0842-00-0915-07	0842-95-0915-07
		1"	1 1/4"	9942-00-0184-00	9942-00-0200-00
		1 1/4"	1 1/4"	9942-00-0199-00	9942-00-0201-00
1/2" IPS	SDR-9.33 (.090)	1 1/4"	1 1/4"	9942-00-0185-00	9942-00-0116-00
		3/4"	1"	1242-00-0913-06	1242-95-0913-06
		1"	1"	1242-00-0914-06	1242-95-0914-06
3/4" IPS	SDR-11 (.095)	1 1/4"	1"	1242-00-0915-06	1242-95-0915-06
		3/4"	1 1/4"	1342-00-0913-07‡	1342-95-0913-07
		1"	1 1/4"	1342-00-0914-07	1342-95-0914-07
		1 1/4"	1 1/4"	1342-00-0915-07	1342-95-0915-07



- For sizes not listed, contact Continental Industries.
- PE Compression Outlets rated at 125 psig.
- ‡ = IAPMO/UPC Listed

ID STEEL[®] SERVICE HEAD ADAPTERS PE Compression x Male Pipe Thread x Female Pipe Thread

PE SIZE	WALL	MPT	FPT	PART NUMBER (Zinc Plated)
1/2" CTS (5/8" OD)	.090	1/2"	3/4"	0430-00-0912-13
		3/4"	3/4"	0430-00-0913-13
		3/4"	1"	0430-00-0913-14
		3/4"	1 1/4"	0430-00-0913-15
		1"	1"	0430-00-0914-14
3/4" CTS (7/8" OD)	.090	3/4"	1"	0630-00-0913-14
		1"	1"	0630-00-0914-14
		1"	1 1/4"	0630-00-0914-15
1" CTS (1 1/8" OD)	.099/.101	3/4"	1 1/4"	0830-00-0913-15
		1"	1 1/4"	0830-00-0914-15
		1 1/4"	1 1/4"	0830-00-0915-15
1/2" IPS	SDR-9.33 (.090)	1/2"	1"	1230-00-0912-14
		3/4"	1"	1230-00-0913-14
		3/4"	1 1/4"	1230-00-0913-15
		1"	1"	1230-00-0914-14
3/4" IPS	SDR-11 (.095)	3/4"	1 1/4"	1330-00-0913-15
		1"	1 1/4"	1330-00-0914-15
		1 1/4"	1 1/4"	1330-00-0915-15
1" IPS	SDR-11 (.119)	1"	1 1/2"	1430-00-0914-16
		1 1/4"	1 1/2"	1430-00-0915-16



- For sizes not listed, contact Continental Industries.
- PE Compression Outlets rated at 125 psig.