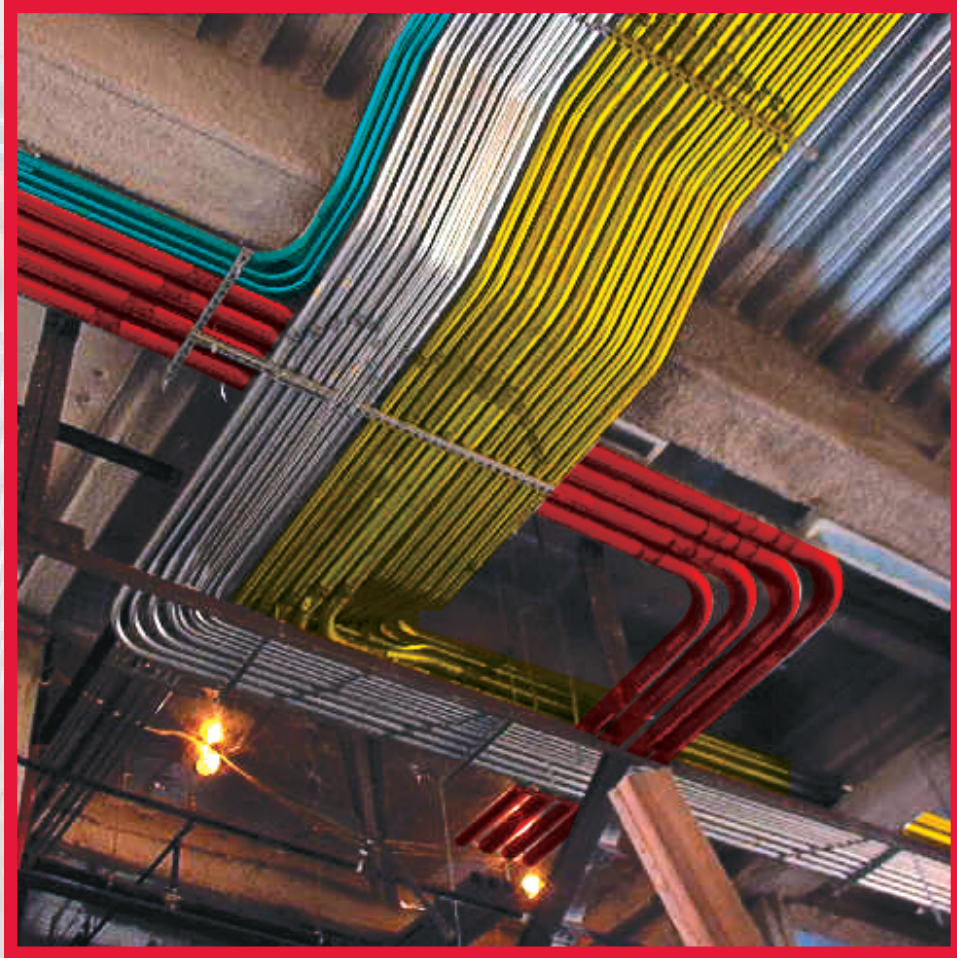


Color Check™ Color-Coded EMT



Wheatland *Tube*

JMC STEEL GROUP

Color Check. Quick Identification of Your Critical Electrical Systems

Wheatland's Color Check™, color-coded EMT steel conduit, gives you on-the-spot identification of your critical and emergency electrical systems — fire and alarm; high or low voltage; hospital or healthcare; fiber optic; data, voice or video.

Features/Benefits of Color Check

- 9 vivid, durable colors
- 10-ft. and 20-ft lengths provide quick, easy installation
- no spray painting or taping needed at the job site
- in-line, hot-dip galvanizing provides superior OD corrosion protection
- a proprietary slick, smooth ID coating is applied to make wire pulling easier, installation faster
- faster, easier installation. EMT's lighter weight allows the use of hand benders and easier handling
- complies with all local, state and federal code specifications

The Winning Team

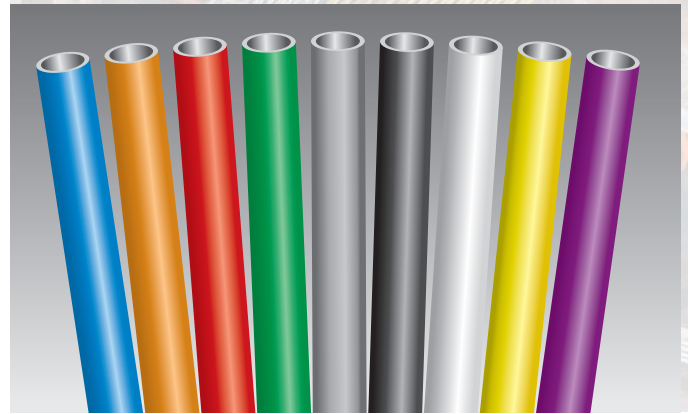
When the job needs to be done on time and within budget, rely on Wheatland. Wheatland's Color Check EMT is produced on our state-of-the-art ERW mills using the latest technology to assure the highest quality. Whether you use 10 ft. or 20 ft. lengths, you can save installation time and money. Experience. Quality. Total in house capabilities. You and Wheatland. That's the winning team.

A Quick Look at Wheatland's Color Check EMT

Wheatland's Color Check steel electrical metallic tubing is manufactured from mild steel strip. It has an accurate circular cross section, a uniform wall thickness, a defect free interior surface, and continuously welded seams.

Coatings: Initially the exterior surface is thoroughly and evenly coated with zinc, using an in-line galvanizing process, so that metal-to-metal contact and galvanic protection against corrosion are provided. Color Check color coatings are then applied over the in-line galvanized coating. The interior surface of the tube is coated with a proprietary slick, lubricating coating that reduces friction during wire insertion, and also retards corrosion.

Sizes: Nominal trade sizes from ½" to 4"



Lengths: Color Check is produced and stocked in traditional 10 foot lengths. (Twenty-foot lengths are available as a special order.) Wheatland was the first to introduce 20 foot lengths, which are factory inventoried in all EMT trade sizes in silver.

Protection: EMT provides mechanical protection for the cables and conductors, reduces Electro-Magnetic Field (EMF) exposure, shields against Electro-Magnetic Interference (EMI) and provides an excellent electrical path to ground.

Sustainability/Green: The steel used to produce Wheatland's Color Check EMT contains recycled steel and is virtually totally recyclable. Steel is the most recycled material in the world, but the recycling may not take place for decades, since the service life of steel conduit is very long. Conductors can easily be removed and new conductors inserted; additional circuits may be added in the same conduit, if permitted by the Code.

Specifications

EMT is dual labeled, certified by CSA® and listed by UL®. It is manufactured in accordance with ANSI® C80.3, UL-6 and federal specifications WW-C-581.

Note: The Electrical industry does not have a circuit-color standard for conduit or EMT but a de facto relationship has been established. Wheatland does not suggest the use of any color for any specific circuit or voltage application. The NEC(r) does not require or designate any EMT color for any circuit, including Fire Alarm. Remember, the previous installer may have used color EMT because of architectural considerations and not as circuit designations.

Electrical Metallic Tubing (EMT)

Colors and Sizes - Stocked in Mill

Sizes	1/2	3/4	1	1 1/4	1 1/2	2
Blue	✓	✓	✓	✓	✓	✓
Orange	✓	✓	✓			
Red	✓	✓	✓	✓	✓	✓
Green	✓	✓	✓			✓
Silver (Standard EMT)*	✓	✓	✓	✓	✓	✓
Black	✓	✓	✓	✓		
White	✓	✓	✓	✓		
Yellow	✓	✓	✓	✓		
Purple	✓	✓	✓			

*Silver available from stock 1/2" - 4".

Other sizes available as special order. Minimum order quantities may apply.

Weights and Dimensions (For 10' EMT)

Trade Size	Metric Designator	Weight		Outside Diameter(1)		Inside Diameter(2)		Wall Thickness(2)	
		10 Unit Lengths		in.		mm		in.	
		lb	kg	in.	mm	in.	mm	in.	mm
1/2	16	30	13.6	0.706	17.93	0.622	15.80	.042	1.07
3/4	21	46	20.9	0.922	23.42	0.824	20.93	.049	1.24
1	27	67	30.4	1.163	29.54	1.049	26.64	.057	1.45
1 1/4	35	101	45.8	1.510	38.35	1.380	35.05	.065	1.65
1 1/2	41	116	52.6	1.740	44.20	1.610	40.89	.065	1.65
2	53	148	67.1	2.197	55.80	2.067	52.50	.065	1.65
2 1/2	63	216	98.0	2.875	73.03	2.731	69.37	.072	1.83
3	78	263	119.3	3.500	88.90	3.356	85.24	.072	1.83
3 1/2	91	349	158.3	4.000	101.60	3.834	97.38	.083	2.11
4	103	393	178.3	4.500	114.30	4.334	110.08	.083	2.11

Notes : Applicable tolerances Length: 10 Ft. (3.05 m) +/- 1/4 in. (+/-6 mm)

(1) Outside Diameter: 1/2 - 2 +/- 0.005 in. (16 - 53 +/- 0.13mm), 2-1/2 +/- 0.010 in. (63 +/- 0.25 mm), 3 +/- 0.015 in. (78 +/- 0.38 mm) , 3-1/2 - 4 +/- 0.020 in. (91 - 103 +/- 0.50 mm).

(2) For information only, not a UL 797 requirement.

Packaging

Trade Size	Metric Designator	Quantity Per Bundle		Quantity Per Lift				Weight Per Lift		Volume Per Lift	
		Feet	Meters	Pieces	Bundles	Feet	Meters	Pounds	Kilograms	Cu. Feet	Cu. m
		1/2	16	100	30.5	---	70	7000	2134	2100	952.5
3/4	21	100	30.5	---	50	5000	1524	2300	1043.3	36.1	1.0
1	27	100	30.5	---	30	3000	914	2010	911.7	36.5	1.0
1 1/4	35	50	15.2	---	40	2000	610	2020	916.3	38.2	1.1
1 1/2	41	50	15.2	---	30	1500	457	1740	789.3	37.9	1.1
2	53	---	---	120	---	1200	366	1776	805.6	46.7	1.3
2 1/2	63	---	---	61	---	610	186	1318	597.8	41.5	1.2
3	78	---	---	51	---	510	155	1341	608.3	48.9	1.4
3 1/2	91	---	---	37	---	370	113	1291	585.6	48.6	1.4
4	103	---	---	30	---	300	91	1179	534.8	50.0	1.4

The quantity per Lift conforms to the National Electrical Manufacturers Association Standards Publication RN-2 Packaging of Master Bundles for Steel Rigid Conduit, Intermediate Metal Conduit (IMC), and Electrical Metallic Tubing.



JMC Steel Group
Pipe and Tube Solutions

Corporate Office
3201 Enterprise Parkway
Suite 150
Beachwood, OH 44122
216.910.3700
info@jmcsteelgroup.com
jmcsteelgroup.com



Wheatland Tube
JMC STEEL GROUP

700 South Dock Street
Sharon, PA 16146
800.257.8182
info@wheatland.com
wheatland.com

Wheatland produces a full line of listed electrical conduit, EMT and tubular fittings. We supply Steel and Aluminum Rigid Metal Conduit (RMC), Steel Intermediate Metal Conduit (IMC) and Steel Electrical Metallic Tubing (EMT). We also manufacture a full line of complementary tubular fittings made from the same materials as our raceways — nipples, elbows, couplings and running thread. (See Wheatland's individual product literature for specific product details.)

All Wheatland manufacturing locations' quality management systems are certified to the ISO 9001:2008 requirements.

For more information contact Wheatland's Electrical Sales Department at 800-257-8182, email: info@wheatland.com or visit our website at www.wheatland.com.



Made in U.S.A.