

## Fig. 60 - Top Beam Clamp

**Size Range** — 3/4" thru 6" pipe

**Material** — Carbon Steel

**Function** — Recommended for use on top flange of standard I-beams, wide flange beams and roof trusses where the flange thickness does not exceed 0.81".

**Installation** — Slide steel clip against beam flange and attach hook rod and I-rod (Fig. 102). Tighten hook rod and I-rod (Fig. 102). Hammer clip firmly against the underside of the beam to complete the installation.

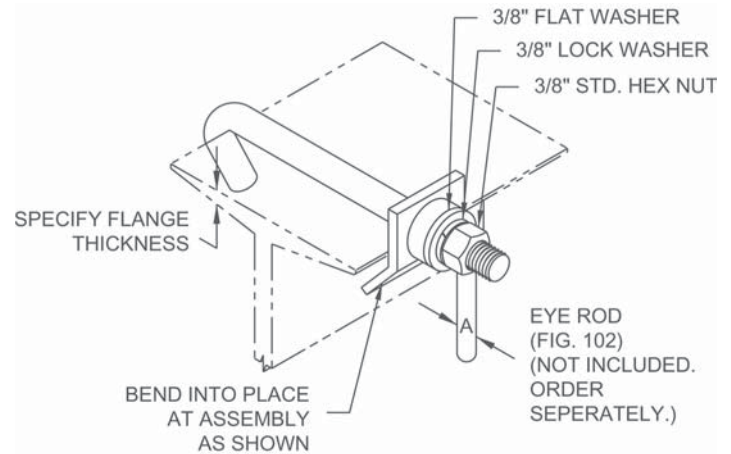
**Features** — The clamp holds firmly to the beam providing an efficient and economical means of supporting small piping from the top flange of steel beams and roof trusses.

**Maximum Temperature** — 650°F

**Finish** — Plain

**Note** — Available in Electro-Galvanized and HDG finish or Stainless Steel materials.

**Order By** — Figure number, flange width and flange thickness



### Dimensions

Pipe Size	Hook Rod Diameter	I-Rod (Fig. 102) A	Max. Rec. Load Lbs.
3/4 - 2	3/8	3/8	610
2½ - 3½	1/2	1/2	940
4 - 5	1/2	5/8	940
6	1/2	3/4	940

## Fig. 61 - Top Beam Hook

**Material** — Carbon Steel

**Function** — Designed to hook onto top flange of beam or angle truss. The support rod completes assembly and secures it to flange.

**Finish** — Plain

**Note** — Available in Electro-Galvanized and HDG finish or Stainless Steel materials.

### Dimensions

Type	A	B	C	Max. Rec. Load Lbs.
1	3/8	5/16	1	300
2	1/2	3/8	1	500
3	5/8	7/16	1	700
4	3/4	1/2	1½	1000
5	7/8	9/16	1½	2000

