

Flange

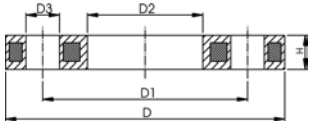
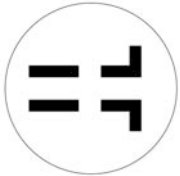
27 70 02
27 70 03

Backing Flanges, PP/Steel For butt fusion systems metric

Model:

- Material: PP (30 % glass-fibre reinforced) with steel ring
- UV-resistant. Applicable for outside applications
- Connecting dimension: ISO 7005, EN 1092, BS 4504, DIN 2501
- **Bolt circle PN 10**

AL: number of holes



d [mm]	d [inch]	DN [mm]	PN	Code	kg	D [mm]	D1 [mm]	D2 [mm]	D3 [mm]	H [mm]	AL	SC
20		15	16	727 700 206	0.220	95	65	28	14	12	4	M12
25		20	16	727 700 207	0.260	105	75	34	14	12	4	M12
32		25	16	727 700 208	0.430	115	85	42	14	16	4	M12
40		32	16	727 700 209	0.650	140	100	51	18	16	4	M16
50		40	16	727 700 210	0.820	150	110	62	18	20	4	M16
63		50	16	727 700 211	0.940	165	125	78	18	20	4	M16
75		65	16	727 700 212	1.300	185	145	92	18	20	4	M16
90		80	16	727 700 313	1.400	200	160	108	18	20	8	M16
110		100	16	727 700 314	1.580	220	180	128	18	20	8	M16
125		100	16	727 700 315	1.550	220	180	135	18	20	8	M16
140		125	16	727 700 316	2.360	250	210	158	18	24	8	M16
160	6	150	16	727 700 317	3.890	285	240	178	22	24	8	M20
180		150	16	727 700 318	3.410	285	240	188	22	24	8	M20
200		200	16	727 700 319	5.180	340	295	235	22	27	8	M20
225		200	16	727 700 320	5.150	340	295	238	22	27	8	M20
250		250	16	727 700 321	6.680	395	350	288	22	30	12	M20
280		250	16	727 700 322	6.580	395	350	294	22	30	12	M20
315		300	16	727 700 323	8.420	445	400	338	22	34	12	M20
355		350	16	727 700 324	15.790	515	460	376	22	40	16	M20
400		400	16	727 700 325	19.320	574	515	430	26	40	16	M24

PF 2 34 238 022

24 70 04

Profiled Backing Flanges, PP/Steel for Butt Fusion Systems metric

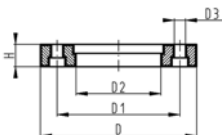
Model:

- PP with glass-fibre reinforcement and GGG 50 insert
- UV-resistant. Applicable for outside applications
- Connecting dimensions: ISO 7005, EN 1092, DIN 2501
- **Bolt circle PN 10**

Note:

flat side = bolt side
profiled side = flange adaptor side

AL: number of holes



d [mm]	DN [mm]	PN	Code	kg	D [mm]	D1 [mm]	D2 [mm]	D3 [mm]	H [mm]	AL	SC
450	500	10	724 700 426	25.600	685	620	517	26	54	20	M24
500	500	10	724 700 427	24.300	685	620	533	26	54	20	M24
560	600	10	724 700 428	35.700	796	725	618	30	64	20	M27
630	600	10	724 700 429	32.500	800	725	645	30	58	20	M27
710	700	6	724 700 430	28.600	912	840	740	30	49	24	M27
800	800	6	724 700 431	39.300	1026	950	843	33	58	24	M30
900	900	6	724 700 432	48.500	1129	1050	947	33	62	28	M30

PF 2 55 337 003