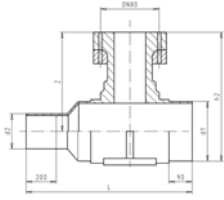




## Duckfoot bend (kit) EN - piece

- PE 100 SDR 11 (ISO S5)
- 16 bar Water
- With flange outlet DN 80 and integrated service outlet d63
- Delivered with ELGEF® Plus Coupler
- For pipe covers according to DIN 3221
- Flange dimensions according to DIN 2501/BS 4504
- O-ring seal at flange front side
- Backing flange material GGG40



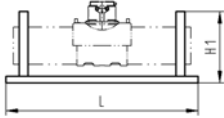
PF 2 51 697 002

d [mm]	Code	GP	kg	d1 [mm]	H1 [mm]	H2 [mm]	L [mm]	DN [mm]
90	<b>193 281 147</b>	1	7.330	63	205	275	690	80
110	<b>193 281 148</b>	1	6.450	63	205	275	690	80



## Pipe support

- PE
- For mainlines d 90 up to d 160
- Rubber coated bearing surface
- Delivered with fixation belts



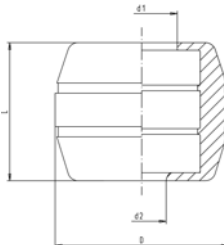
PF 2 51 697 002

d [mm]	Code	GP	kg	L [mm]	H1 [mm]
90 - 160	<b>193 281 105</b>	1	2.480	435	160



## Drainage stone For PE-hydrant

- Suitable for spigot and flange edition
- Consists of 2 polystyrene half-shells
- Fits exactly onto hydrants' shape
- Self-locking feature
- Groves for tape fit
- Volumetric capacity 8.5 l
- Drain away slots underside



PF 2 51 697 002

L [mm]	D [mm]	Code	GP	kg	d1 [mm]	d2 [mm]
275	342	<b>193 281 465</b>	-	0.175	140	96