



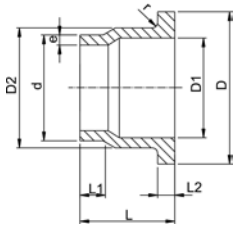
Outlet flange adaptor PE80 SDR11

Model:

- Conventional butt-welding according to DVS 2207 part 1
- Suitable for wafer check valves Type 369

Attention:

- In conjunction with outlet flange adaptors, **flange rings for socket systems** must be used.



d [mm]	DN [mm]	Code	GP	kg	D [mm]	D1 [mm]	D2 [mm]	L [mm]	L1 [mm]	L2 [mm]	e [mm]	r [mm]
40	32	733 808 034	-	0.064	80	37	50	64	30	11	3,7	3
50	40	733 808 035	-	0.088	90	43	61	67	30	12	4,6	3
63	50	733 808 036	-	0.126	105	54	76	74	30	14	5,8	4
75	65	733 808 037	-	0.187	125	70	90	78	30	16	6,8	4
90	80	733 808 038	-	0.346	140	82	108	87	35	17	8,2	4
110	100	733 808 039	-	0.500	160	105	131	102	41	18	10,0	4
140	125	733 808 041	-	0.710	190	130	165	124	47	25	12,7	4
160	150	733 808 042	-	0.910	215	158	188	149	52	25	14,6	4
225	200	733 808 045	-	1.830	270	206	248	180	55	32	20,5	4
280	250	733 808 047	-	3.550	325	259	308	240	63	35	25,4	4
315	300	733 808 048	-	4.960	375	308	346	272	66	35	28,6	4

PF 2 68 240 010



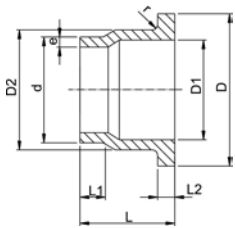
Outlet flange adaptor PE80 SDR17.6

Model:

- Conventional butt-welding according to DVS 2207 part 11
- Suitable for wafer check valves Type 369

Attention:

- In conjunction with outlet flange adaptors, **flange rings for socket systems** must be used.



d [mm]	DN [mm]	Code	GP	kg	D [mm]	D1 [mm]	D2 [mm]	L [mm]	L1 [mm]	L2 [mm]	e [mm]	r [mm]
40	32	733 808 009	-	0.060	80	37	50	64	30	11	2,3	3
50	40	733 808 010	-	0.067	90	43	61	67	30	12	2,9	3
63	50	733 808 011	-	0.096	105	54	76	74	30	14	3,6	4
75	65	733 808 012	-	0.170	125	70	90	78	30	16	4,3	4
90	80	733 808 013	-	0.260	140	82	108	87	35	17	5,1	4
110	100	733 808 014	-	0.355	160	105	131	102	41	18	6,3	4
140	125	733 808 016	-	0.500	190	130	165	124	47	18	8,0	4
160	150	733 808 017	-	0.630	215	158	188	149	52	18	9,1	4
225	200	733 808 020	-	1.225	270	206	248	180	55	24	12,8	4
280	250	733 808 022	-	2.230	325	259	308	240	63	25	15,9	4
315	300	733 808 023	-	2.450	375	308	346	272	66	25	17,9	4

PF 2 68 240 024