

rotork®

Process Controls

LA Series - Electric Linear Actuators

Rotork Process Controls designs and manufactures high quality, durable actuators designed for trouble-free performance under the most demanding conditions. The LA-2000 Series, with its field-proven design, is a perfect fit for all of your critical linear actuator applications.

The LA-2000 Series are self-contained, bi-directional, linear actuators internally geared to produce up to 1,600 lbs. (7,117 N) of thrust. Some models also offer continuous modulating duty up to 2,000 starts per hour.

A variety of speeds, thrusts, motors, voltages and control options are available which make the LA-2000 Series ideally suited for reliable positioning of dampers, combustion controls, gates, diverters, hydraulic variable speed drives, or other linear positioning applications.

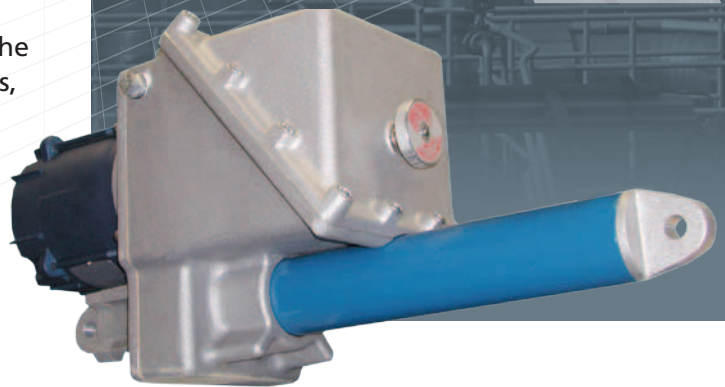
LA-2000 Series actuators are also available with an internal or external amplifier. These amplifiers are all full-featured AC or DC switching devices designed to work seamlessly with the actuator for closed loop control.

Features

- Mechanical Thrust Overload Protection
- High Modulating Duty
- Highly Accurate Control
- Many Voltage Options
- Minimal Maintenance
- Cast Aluminum Housing
- Grease Lubricated
- Rain Shield & Bellows Cover

Benefits

- Protects Unit from Costly Motor Burnout
- Improves Process Control
- Better Control of Flow or Process
- Optimizes Wiring Costs
- Minimizes Downtime
- Lightweight & Anti-corrosive
- Any Position Mounting
- Prevents Damage Due to Water Intrusion



LA-2000 Series

Electric Linear Actuators



Established Leaders in Actuation Technology

rotork®

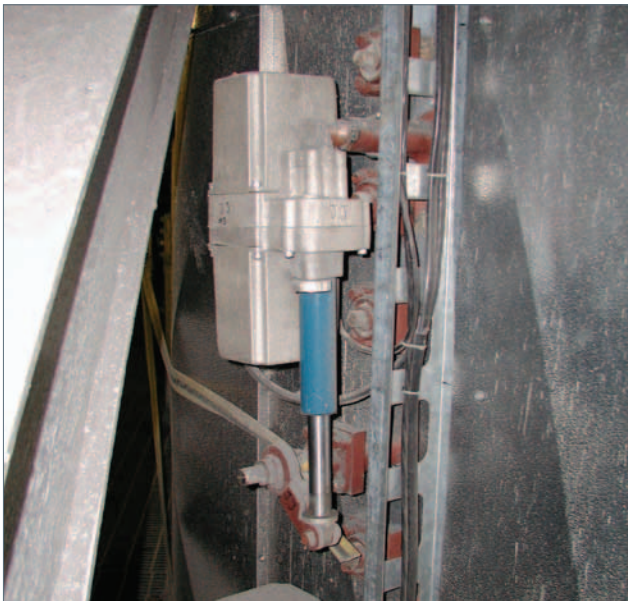
Process Controls

Popular Options:

- 4 to 20 mA proportional control and position feedback
- Auxiliary position limit switches
- High temperature operation over 150 °F (65 °C)
- Trunnion mount (Not available on 6 inch models)
- Anti-condensation heater and thermostat for LA-2300
- Integral reversing starter with overload protection (3-phase models)
- Potentiometer, contactless feedback element
- Battery back-up
- ATEX approval for LA-2520
- Bellows seal to protect extension tube from dirt and moisture

Applications:

- Slide Gate Control
 - Blending
 - Open / Close
- Diverter Operation
- Weigh Hopper Gates
- Flop Gates
- Clam Shell Gates
- Air Damper Control
- Burner Shroud Positioning
- Burner Tilt
- Igniter Retract
- Hydraulic Cylinder Replacement
- Pneumatic Cylinder Replacement
- Valve Automation



LA-2400 - Linear

2400 series



- Thrusts from 150 to 1,500 lbf. (667 to 6,672 N)
- Stroke distance from 6" to 24" (152 to 610 mm)
- Modulating Duty: 2,000 starts per hour
- Manual override standard
- HART available
- Automatic thrust limiting
- Anti-condensation heater and thermostat
- Self-locking drive system to hold in last position and prevent backdriving up to thrust rating
- AC input power (single and three-phase) or DC input power versions
- Temperature range from -40 to 150 °F (-40 to 65 °C)
- Two year warranty

LA-2500 - Linear

2500 series



- Thrusts from 800 to 1,600 lbf. (3,558 to 7,117 N)
- Stroke distance from 6" to 24" (152 to 610 mm)
- Modulating Duty: 2,000 starts per hour (indoor/outdoor)
- Manual override standard
- HART available
- Automatic thrust limiting
- Anti-condensation heater and thermostat
- Self-locking drive system to hold in last position and prevent backdriving up to thrust rating
- AC input power (single and three-phase)
- Temperature range from -40 to 150 °F (-40 to 65 °C)
- Two year warranty

Established Leaders in Actuation Technology