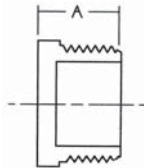


BlazeMaster® Fire Protection Fittings – THREADED

TEST PLUG

450-005



Test Plugs

UNIV. FIG. NO.	NOM. SIZE	APPROX. NET WT./LBS.	DIM. A INCHES	JOINT
450-005	1/2"	0.03	1.06	MPT

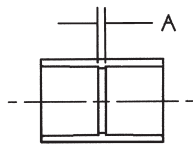
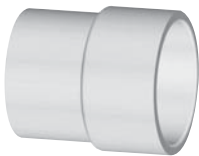
Note: Test plug is white PVC Schedule 40 material and is intended for testing the system only. Test plug should not be included as a component in the completed system.

IPS TO CTS TRANSITION FITTINGS

FLOWGUARD GOLD®
CPVC

FOR USE IN MULTI-PURPOSE NFPA-13D SYSTEMS (WHERE APPROVED).

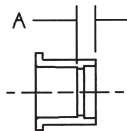
4701-T



Transition Couplings (Slip IPS x Slip CTS)

NOM. SIZE		APPROX. NET WT./LBS.	DIM. A INCHES
3/4	(IPS) x 3/4 (CTS)	.039	1/8
1	(IPS) x 1 (CTS)	.068	1/8
2	(IPS) x 2 (CTS)	.330	1/8

4718-T



Transition Bushings (Spigot IPS x Slip CTS)

NOM. SIZE		APPROX. NET WT./LBS.	DIM. A INCHES
1	(IPS) x 1 (CTS)	.030	9/32
1 1/4	(IPS) x 1 1/4 (CTS)	.057	1/4
1 1/2	(IPS) x 1 1/2 (CTS)	.070	3/16
2	(IPS) x 2 (CTS)	.111	1/8

Note: For joining BlazeMaster® and FlowGuard Gold® pipe and fittings, use NIBCO® FP-1000 One-Step Cement.

IPS = Iron Pipe Size
CTS = Copper Tube Size