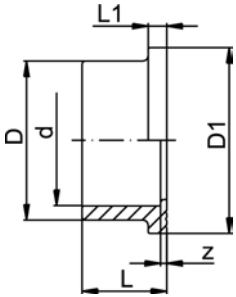


# Flange Adaptor

## Flange Adaptor, PVC-U Combined Jointing face flat and serrated, metric



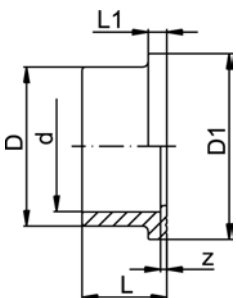
**Model:**

- Solvent cement socket metric
- d16 - d50: Jointing face flat
- d63 - d400: Combined Jointing face flat and serrated
- Gasket: Profile flange gasket EPDM No. 48 44 07, FPM No. 49 44 07 or Flat gasket EPDM No. 48 40 03  
Only use O-ring EPDM No. 48 41 01, FPM No. 49 41 01 in combination with counterpart Flange Adaptor No. 21 81 01
- Flange: PVC-U No. 21 70 00, PP with steel ring No. 27 70 02, Backing Flange PP-V for socket systems metric No. 27 70 04

**Note: The flat gasket affects the maximum allowable operating pressure!**

d [mm]	d [inch]	DN [mm]	PN	Code	z [mm]	D [mm]	D1 [mm]	L [mm]	L1 [mm]
63		50	16	721 790 111	3	77	90	41	9
75	2 ½	65	16	721 790 112	3	91	106	47	10
90		80	16	721 790 113	5	108	125	56	11
110		100	16	721 790 114	5	131	150	66	12
140	5	125	16	721 790 116	5	165	188	81	14
160		150	16	721 790 117	5	188	213	91	16
225		200	10	721 790 120	6	248	274	125	25
280		250	10	721 790 122	5	308	329	151	23
315		300	6	721 790 123	8	346	379	172	27

## PVC-C Flange adaptor PVC-C Jointing face flat / serrated metric



**Model:**

- Solvent cement socket metric

d [mm]	DN [mm]	PN	Code	z [mm]	D [mm]	D1 [mm]	L [mm]	L1 [mm]
63	50	16	723 790 111	3	76	90	41	9
75	65	16	723 790 112	3	91	106	47	10
90	80	16	723 790 113	5	108	125	56	11
110	100	16	723 790 114	5	131	150	66	12
160	150	16	723 790 117	5	188	213	91	16
225	200	10	723 790 120	6	248	274	125	25