

WK44 HIGH PURITY VALVES**Features**

- High Purity, Cast 316L
- Class 100 Clean Room Assembly
- 30Ra interior surface finish
- Diverter and Three-way porting
- Aseptic purge connections
- Quick disconnect & Extended weld ends

Specifications

- Size Range: ½" - 2.0"
- Body Styles: 2-way and 3-way

Materials:

- ASTM A351-CF3M, ASTM A479
- Interior Surface Finish: 30Ra std, 15Ra electropolished
- Seats/Seals: PTFE, UHMWPE, Polyfill

Agency Approvals

- FDA(21CFR), USDA, USP

Applications

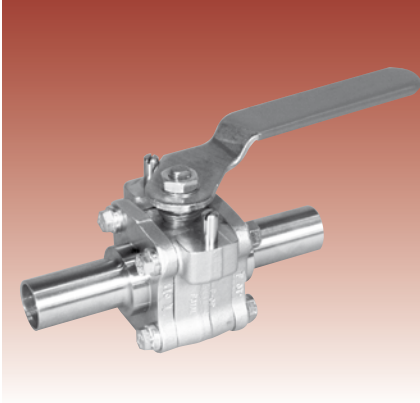
- Sterile steam, cosmetics and creams, oils, detergents, food processing

Get more information:

Product catalog:
WCABR1035

IOMs
WCAIM2030

See page 2.

WK74 HIGH PURITY VALVES**Features**

- High Purity, Cast 316L - Tube bore
- Class 100 Clean Room Assembly
- 20Ra interior surface finish
- Controlled ferrite <5%
- Controlled sulfur for orbital welding
- CMTRs standard

Specifications

- Size Range: ½" - 4.0"
- Body Styles: 2-way and 3-way

Materials:

- ASTM A351-CF3M, ASTM A479
- Interior Surface Finish: 20Ra std, 10Ra electropolished
- Seats/Seals: PTFE, TFM, Polyfill

Agency Approvals

- ASME BPE, FDA(21CFR), USP Class 6, USDA

Applications

- High purity and aseptic processes, sterile steam, high purity water, fermentation, lyophilization, food processing

Get more information:

Product catalog:
WCABR1037

IOMs
WCAIM2018

See page 2.

WK70 HIGH PURITY VALVES**Features**

- High Purity, Forged F316L - Tube bore
- Class 100 Clean Room Assembly
- 20Ra interior surface finish
- Controlled ferrite <5% (<1% optional)
- Controlled sulfur for orbital welding
- CMTRs

Specifications

- Size Range: ½" - 4.0" (6.0" optional)
- Body Styles: 2-way and 3-way

Materials: ASTM A182 F316L, ASTM A479

- Interior Surface Finish: 20Ra std, 10Ra electropolished
- Seats/Seals: PTFE, TFM, Polyfill

Agency Approvals

- ASME BPE, FDA(21CFR), USP Class 6, USDA

Applications

- Pharmaceutical/Biotech, microelectronics, steam distribution and distillation, fermentation, lyophilization, food and beverage

Get more information:

Product catalog:
WCABR1036

IOMs
WCAIM2018

See page 2.