



PROGEF Standard installation fitting type 314



Model:

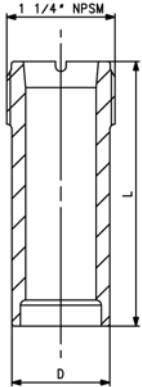
- Material: PP-H
- Threaded outlet 1 1/4" NPSM
- for conventional hot gas back welding according to DVS 2207 part 3

Range of use:

- compatible signet flow sensors: type 2551, 2537, 515, 8510, 2536, 8512
- compatible signet pH/ORP sensors: type 2724, 2725, 2726

Attention:

- only for pressureless or low pressure application
- pressure rate depends on quality of hot gas back welding
- please consult the instruction manual
- Installation by trained and certified welders only
- sensor length depends on installation fitting



d [mm]	DN	PN* [bar]	Code	kg	D [mm]	L [mm]	Sensor Type
75 - 180	65 - 150	-	727 314 000	3.540	37.5	68	flow X0, pH XX
200 - 355	200 - 350	-	727 314 001	5.160	37.5	102	flow X1
400 - 630	350 - 600	-	727 314 002	8.854	37.5	178	flow X2

27 31 80



PROGEF Standard installation fitting type 318 S5/SDR11 for butt fusion systems metric

Model:

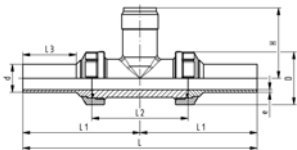
- Material: PP-H
- Threaded outlet 1 1/4" NPSM
- Union end with butt fusion spigot PP-H

Range of use:

- compatible signet flow sensors: type 2551, 2537, 515, 8510, 2536, 8512
- compatible signet pH/ORP sensors: type 2724, 2725, 2726

Attention:

- sensor length depends on installation fitting



d [mm]	DN [mm]	PN	FM	EPDM Code	FPM Code	kg
20	15	10	IR	727 318 006	727 318 036	0.136
25	20	10	IR	727 318 007	727 318 037	0.190
32	25	10	IR	727 318 008	727 318 038	0.250
40	32	10	IR	727 318 009	727 318 039	0.356
50	40	10	IR	727 318 010	727 318 040	0.510
63	50	10	IR	727 318 011	727 318 041	0.800

d [mm]	e [mm]	D [mm]	L [mm]	L1 [mm]	L2 [mm]	L3 [mm]	H [mm]	Sensor Type
20	1.9	48	224	112	90	52	76	flow X0, pH XX
25	2.3	58	242	121	100	53	78	flow X0, pH XX
32	2.9	65	256	128	110	55	81	flow X0, pH XX
40	3.7	79	272	136	110	60	85	flow X0, pH XX
50	4.6	91	294	147	120	66	89	flow X0, pH XX
63	5.8	105	316	158	130	70	95	flow X0, pH XX