

Flange

Backing Flange, PVC-U metric



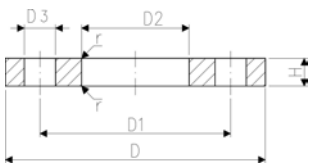
Model:

- For socket systems
- Connecting dimension: ISO 7005, EN 1092, BS 4504, DIN 2501
- Maximum medium- or ambient temperature 45 °C
- **Bolt circle PN 10**

¹ Connecting dimension: ISO 2536, bolt circle acc. DN125, suitable for flange adaptor d125/DN100

² Connecting dimension: ISO 2536, bolt circle acc. DN225, suitable for flange adaptor d250/DN250

AL: number of holes



d [mm]	DN [mm]	Inch	PN	Code	D [mm]	D1 [mm]	D2 [mm]	D3 [mm]	H [mm]	r [mm]	AL	SC
63	50	2	10	721 700 011	165	125	78	18	18	3	4	M16
75	65	2 ½	10	721 700 012	185	145	92	18	19	3	4	M16
90	80	3	10	721 700 013	200	160	110	18	20	3	8	M16
110	100	4	10	721 700 014	220	180	133	18	22	3	8	M16
140	125	5	10	721 700 016	250	210	167	18	26	4	8	M16
160	150	6	10	721 700 017	285	240	190	22	28	4	8	M20
225	200	8	10	721 700 020	340	295	250	22	32	4	8	M20
280	250	10	6	721 700 137	395	350	310	22	36	4	12	M20
315	300	12	6	721 700 138	445	400	348	22	36	4	12	M20

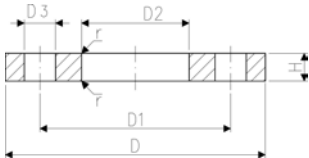
Backing flange PVC-U Inch ASTM / ANSI



Model:

- For socket systems
- For Flange Adaptors BS/ANSI
- Connecting dimension: ANSI/ASME B 16.5 class 150, ASTM D 4024, BS 1560, BS EN 1759

* Only for use with metric flange adaptors



d [mm]	DN [mm]	Inch	PN	Code	D [mm]	D1 [mm]	D2 [mm]	D3 [mm]	H [mm]	r [mm]	AL
* 110	50	2	10	721 702 211	165	121	78	19	18	3	4
	65	2 ½	10	721 702 212	185	140	92	19	19	3	4
	80	3	10	721 702 213	200	152	110	19	20	3	4
	100	4	10	721 702 214	220	190	138	19	22	3	8
	100	4	10	161 483 180	220	190	133	19	22	3	8
	125	5	10	721 702 216	250	216	167	22	26	4	8
	150	6	10	721 702 217	285	241	200	22	28	4	8
	200	8	10	721 702 220	340	298	250	22	32	4	8