

Sensor installation fittings

27 31 10

PROGEF Standard installation fitting type 311



Model:

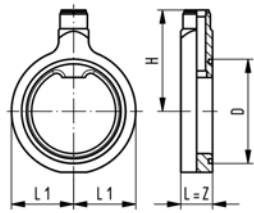
- Material: PP-H
- Threaded outlet 1 ¼" NPSM
- Suitable for backing flanges metric and inch
- Suitable for SDR 11 - SDR 17.6
- Delivered with profile O-ring

Range of use:

- compatible signet flow sensors: type 2551, 2537, 515, 8510, 2536, 8512

Attention:

- sensor length depends on installation fitting



d [mm]	DN [mm]	PN	EPDM Code	FPM Code	kg	D [mm]	H [mm]	L [mm]	L1 [mm]	Sensor Type
75	65	16	727 311 012	727 311 042	0.460	88	133	48	61	flow X1
90	80	16	727 311 013	727 311 043	0.542	102	140	48	69	flow X1
110	100	16	727 311 014	727 311 044	0.668	132	149	48	79	flow X1
125	100	16	727 311 015	727 311 045	0.595	132	144	48	79	flow X1
140	125	16	727 311 016	727 311 046	0.842	157	149	48	94	flow X1
160	150	16	727 311 017	727 311 047	1.023	182	156	48	106	flow X1
180	150	16	727 311 018	727 311 048	0.868	182	163	48	106	flow X1
200	200	16	727 311 019	727 311 049	1.578	236	170	48	134	flow X1
225	200	16	727 311 020	727 311 050	1.332	236	178	48	134	flow X1
250	250	16	727 311 021	727 311 051	2.209	289	263	48	160	flow X2
280	250	16	727 311 022	727 311 052	1.836	289	273	48	160	flow X2
315	300	16	727 311 023	727 311 053	2.495	329	285	48	185	flow X2

27 31 20

PROGEF Standard installation fitting type 312 metric



Model:

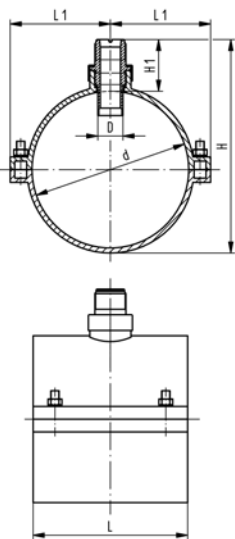
- Material: PP-H
- Threaded outlet 1 ¼" NPSM
- Top saddle with EPDM gasket
- Stainless steel bolts and nuts

Range of use:

- compatible signet flow sensors: type 2551, 2537, 515, 8510, 2536, 8512

Attention:

- sensor length depends on installation fitting



d [mm]	DN [mm]	PN	Code	kg	D [mm]	L [mm]	L1 [mm]	H [mm]	H1 [mm]	Sensor Type
75	65	8	727 312 072	0.458	34	78	62	172	88	flow X1
90	80	8	727 312 073	0.514	34	86	69	186	87	flow X1
110	100	8	727 312 074	0.598	34	98	79	206	86	flow X1
125	100	8	727 312 075	0.667	34	101	85	212	78	flow X1
140	125	6	727 312 076	0.911	34	114	104	227	75	flow X1
160	150	6	727 312 077	0.985	34	114	114	243	72	flow X1
180	150	6	727 312 078	2.085	34	168	134	348	144	flow X2
200	200	6	727 312 079	2.045	34	168	132	357	142	flow X2
225	200	5	727 312 080	2.142	34	174	146	375	136	flow X2
250	250	5	727 312 081	2.566	34	179	159	397	131	flow X2
280	250	5	727 312 082	3.594	34	179	167	426	127	flow X2
315	300	5	727 312 083	4.250	34	248	202	450	120	flow X2