

Stainless Steel Check Valves

200 CWP • Y-Pattern • Threaded Cap

Figure 49
Threaded Ends

Size Range:

½ through 2 inches

Design Features:

- Integral Seat
- Y Pattern

Pressure Temperature Ratings:

- 200 psi @ -20°F to 100°F
- 135 psi @ 500°F Max

Industry Standards

Pipe Threads	ASME B1.20.1
--------------	--------------

Materials of Construction

1	Body	ASTM A351 CF8M
2	Cap	ASTM A351 CF8M
3	Disc	ASTM A351 CF8M
4	Hinge Arm	ASTM A351 CF8M
5	Hinge Pin	316 SS
6	Disc Nut	316 SS
7	Disc Washer	316 SS
8	Plug	316 SS
9	Seal	PTFE
10	Gasket	PTFE

Dimensions and Weights

Valve Size	Weight (lbs)	Dimensions (inches)	
		A	B
½	0.7	2.56	1.8
¾	1.1	3.15	2.0
1	1.5	3.54	2.4
1 ½	3.1	4.72	3.2
2	4.6	5.51	3.7

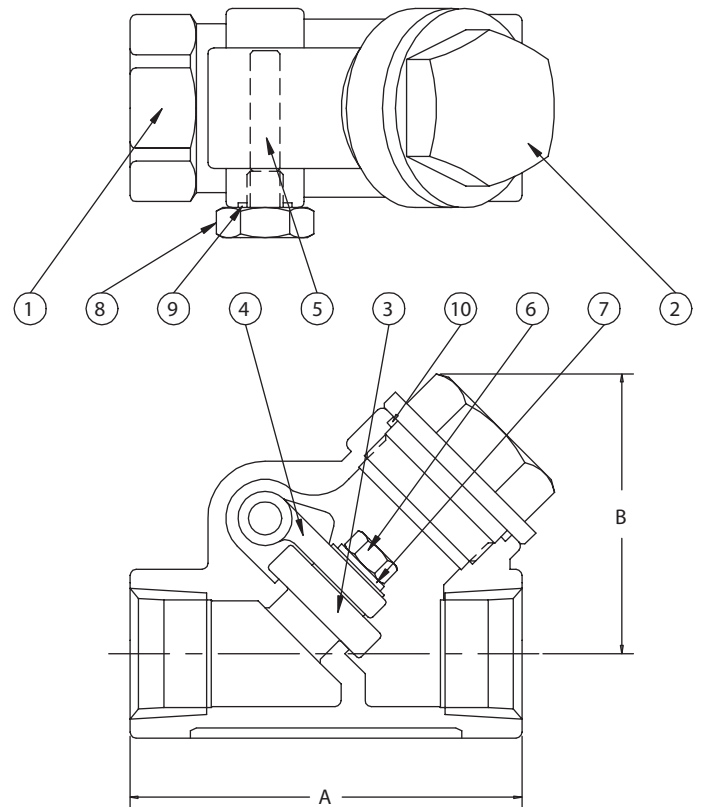


Fig. 49

Class 150 • Bolted Cover

Figure 370

Threaded Ends

Figure 374

Socket Weld Ends

Size Range:

½ through 2 inches

Design Features:

- Retained Gasket
- Integral Seat
- ASME B16.34

Industry Standards

Pipe Threads	ASME B2.1
Wall Section	ASME B16.34
Socket Weld Ends	ASME B16.11
End-to-End	Manufacturer's Standard
Pressure Temp. Ratings	ASME B16.34
Testing	API 598

Materials of Construction

1	Body	ASTM A351 CF3M
2	Cover	ASTM A351 CF8M
3	Disc	ASTM A351 CF8M
4	Hinge Arm	ASTM A351 CF8M
5	Hinge Pin	ASTM A276 T316
6	Disc Washer	ASTM A276 T304
7	Disc Nut	ASTM A194 GR 8
8	Plug	ASTM A276 T316
9	Gasket	PTFE
10	Plug Seal	PTFE
11	Cover Bolt	ASTM A193 GR B8
12	Cover Bolt Nut	ASTM A194 GR 8
13	ID Tag	ASTM A276 T304

Dimensions and Weights

Valve Size	Weight (lbs)	Dimensions (inches)		
		A	B	C*
½	3.5	3.35	2.4	38
¾	3.7	3.74	2.8	50
1	5.5	4.53	3.1	50
1½	8.6	4.92	4.1	50
2	10.3	5.91	4.6	62

* For Figure 374 only - socket weld depth

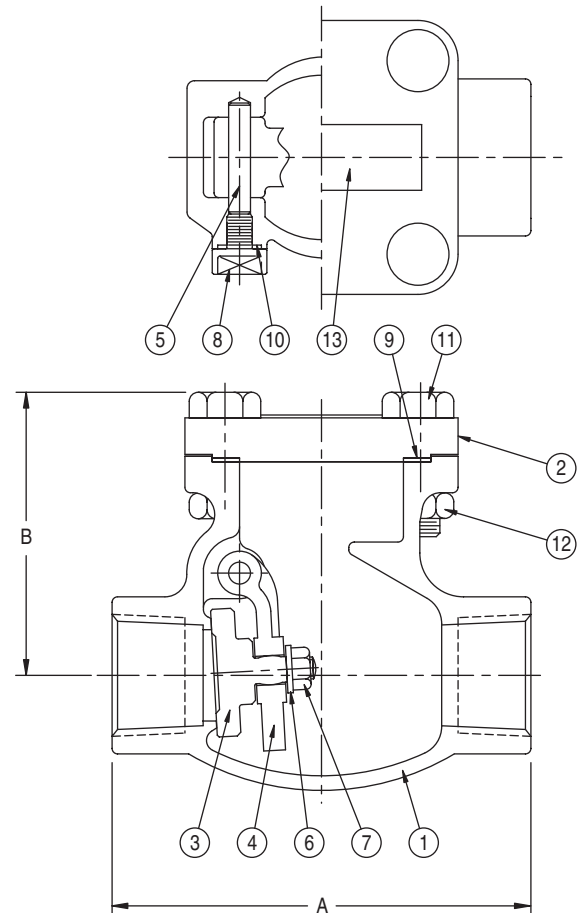


Fig. 370

Stainless Steel Check Valves

Class 150 • Bolted Cover

Figure 377
Raised Face, Flanged Ends

Size Range:

½ through 24 inches

Design Features:

- Retained Gasket
- Integral Seat
- MSS SP-42
- ASME B16.34

Industry Standards

End Flanges	ASME B16.5
Wall Section	ASME B16.34
Face-to-Face	ASME B16.10
Pressure-Temp. Ratings	ASME B16.34
Testing	API 598

Materials of Construction

1	Body	ASTM A351 CF8M
2	Cover	ASTM A351 CF8M
3	Disc	ASTM A351 CF8M
4	Hinge Arm	ASTM A351 CF8M
5	Hinge Pin	ASTM A276 T316
6	Disc Washer	ASTM A276 T304
7	Disc Nut	ASTM A194 GR 8M
8	Plug	ASTM A276 T316
9	Gasket	PTFE
10	Plug Seal	PTFE
11	Cover Bolt	ASTM A193 GR B8
12	Cover Bolt Nut	ASTM A194 GR 8
13	ID Tag	ASTM A276 T304

Dimensions and Weights

Valve Size	Weight (lbs)	Dimensions (inches)	
		A	B
½	4.2	4.25	2.4
¾	5.6	4.63	2.8
1	8.4	5.00	3.1
1 ½	13.5	6.50	4.1
2	20.4	8.00	4.6
2 ½	50.7	8.50	6.1
3	57.3	9.50	6.3
4	99.2	11.50	7.9
6	172.0	14.00	9.8
8	299.9	19.50	11.5
10	471.9	24.50	13.0
12	707.8	27.50	13.9
14	904.1	31.00	15.5
16	1133.4	34.00	16.5
18	1633.9	38.50	20.1
20	2070.5	38.50	21.7
24	2967.9	51.00	22.0

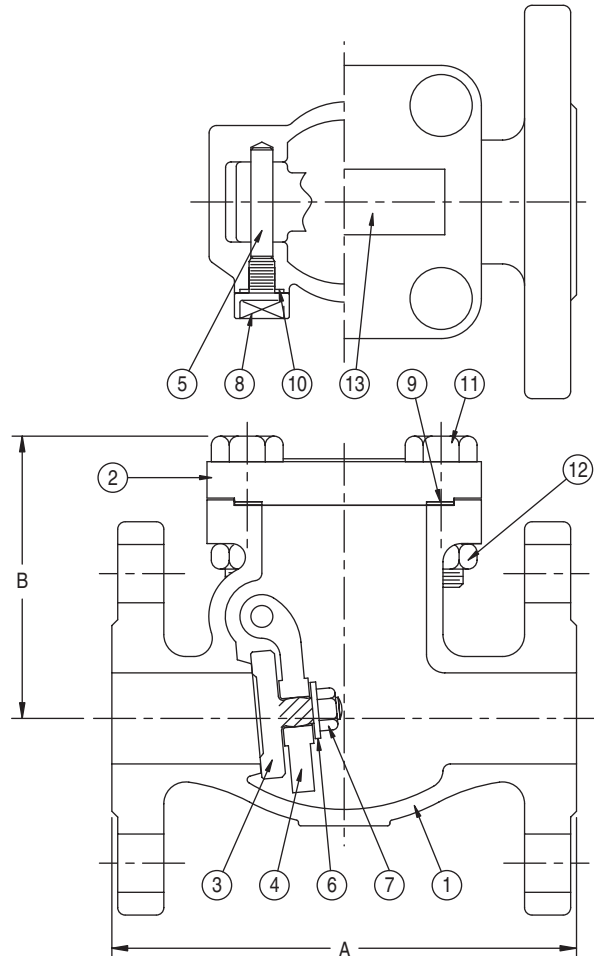


Fig. 377



Class 300 • Bolted Cover

Figure 2370

Threaded Ends

Figure 2374

Socket Weld Ends

Size Range:

½ through 2 inches

Design Features:

- Retained Gasket
- Integral Seat

Industry Standards

Pipe Threads	ASME B1.20.1
Wall Section	ASME B16.34
Socket Weld Ends	ASME B16.11
End-to-End	Manufacturer's Standard
Pressure Temp. Ratings	ASME B16.34
Testing	API 598

Materials of Construction

1	Body	ASTM A351 CF3M
2	Cover	ASTM A351 CF8M
3	Disc	ASTM A351 CF8M
4	Hinge Arm	ASTM A351 CF8M
5	Hinge Pin	ASTM A276 T316
6	Disc Washer	ASTM A276 T304
7	Disc Nut	ASTM A194 GR 8
8	Gasket	PTFE
9	Cover Bolt	ASTM A193 GR B8
10	Cover Bolt Nut	ASTM A194 GR 8
11	ID Tag	ASTM A276 T304

Dimensions and Weights

Valve Size	Weight (lbs)	Dimensions (inches)		
		A	B	C*
½	4.2	3.23	3.3	38
¾	4.2	3.23	3.3	50
1	5.8	4.13	3.4	50
1½	10.1	4.92	3.9	50
2	13.1	5.31	4.1	62

* For Figure 2374 only - socket weld depth

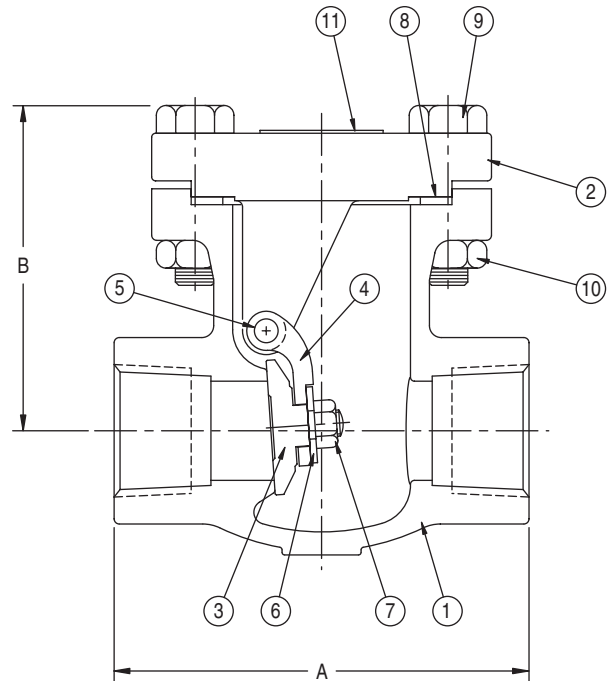


Fig. 2370

Stainless Steel Check Valves

Class 300 • Bolted Cover

Figure 2377
Raised Face, Flanged Ends

Size Range:

½ through 24 inches

Design Features:

- Retained Gasket
- Integral Seat
- MSS SP-42

Industry Standards

End Flanges	ASME B16.5
Wall Section	ASME B16.34
Face-to-Face	ASME B16.10
Pressure-Temp. Ratings	ASME B16.34
Testing	API 598

Materials of Construction

1	Body	ASTM A351 CF8M
2	Cover	ASTM A351 CF8M
3	Disc	ASTM A351 CF8M
4	Hinge Arm	ASTM A351 CF8M
5	Hinge Pin	ASTM A276 T316
6	Disc Washer	ASTM A276 T304
7	Disc Nut	ASTM A194 GR 8
8	Gasket	PTFE
9	Cover Bolt	ASTM A193 GR B8
10	Cover Bolt Nut	ASTM A194 GR 8
11	ID Tag	ASTM A276 T304

Dimensions and Weights

Valve Size	Weight (lbs)	Dimensions (inches)	
		A	B
½	---	6.00	3.3
¾	---	7.00	3.3
1	---	8.50	3.4
1 ½	---	9.50	3.9
2	---	10.50	4.1
2 ½	81.6	11.50	6.5
3	92.6	12.50	6.9
4	141.1	14.00	7.3
6	273.4	17.50	10.3
8	489.5	21.00	12.3
10	643.9	24.50	14.0
12	979.0	28.00	15.5
14	1420.0	33.00	20.1
16	1753.0	34.00	20.5
18	2319.7	38.50	22.5
20	2668.1	40.00	24.5
24	4224.8	53.00	28.0

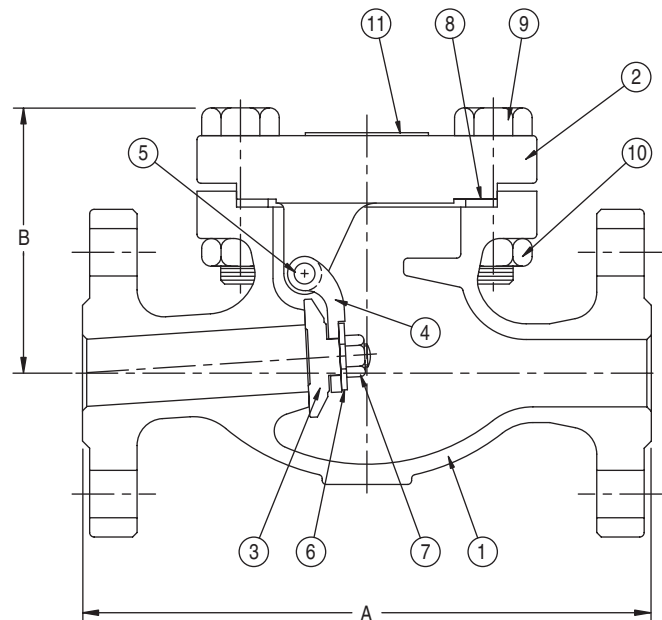


Fig. 2377

Class 600 • Bolted Cover

Figure 4370

Threaded Ends

Figure 4374

Socket Weld Ends

Size Range:

½ through 2 inches

Design Features:

- Retained Gasket
- Integral Seat

Industry Standards

Pipe Threads	ASME B1.20.1
Wall Section	ASME B16.34
Socket Weld Ends	ASME B16.11
End-to-End	Manufacturer's Standard
Pressure Temp. Ratings	ASME B16.34
Testing	API 598

Materials of Construction

1	Body	ASTM A351 CF3M
2	Cover	ASTM A351 CF8M
3	Disc	ASTM A351 CF8M
4	Hinge Arm	ASTM A351 CF8M
5	Hinge Pin	ASTM A276 T316
6	Disc Washer	ASTM A276 T304
7	Disc Nut	ASTM A194 GR 8
8	Gasket	PTFE
9	Cover Bolt	ASTM A193 GR B8
10	Cover Bolt Nut	ASTM A194 GR 8
11	ID Tag	ASTM A276 T304

Dimensions and Weights

Valve Size	Weight (lbs)	Dimensions (inches)		
		A	B	C*
½	4.2	3.23	3.3	.38
¾	4.2	3.23	3.3	.50
1	5.8	4.13	3.4	.50
1 ½	10.1	4.92	3.9	.50
2	13.1	5.31	4.1	.62

* For Figure 4374 only - socket weld depth

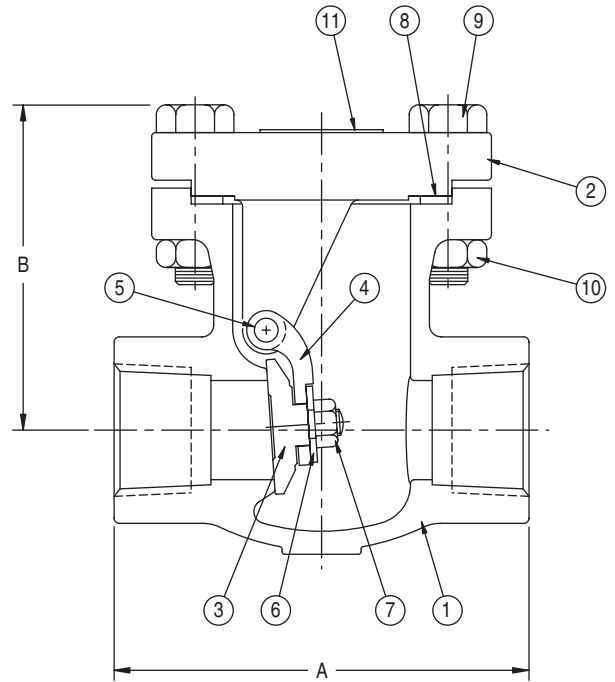


Fig. 4370

Stainless Steel Check Valves

Class 600 • Bolted Cover

Figure 4377
Raised Face, Flanged Ends

Size Range:

½ through 12 inches

Design Features:

- Retained Gasket
- Integral Seat
- MSS SP-42

Industry Standards

End Flanges	ASME B16.5
Wall Section	ASME B16.34
Face-to-Face	ASME B16.10
Pressure-Temp. Ratings	ASME B16.34
Testing	API 598

Materials of Construction

1	Body	ASTM A351 CF8M
2	Cover	ASTM A351 CF8M
3	Disc	ASTM A351 CF8M
4	Hinge Arm	ASTM A351 CF8M
5	Hinge Pin	ASTM A276 T316
6	Disc Washer	ASTM A276 T304
7	Disc Nut	ASTM A194 GR 8
8	Gasket	PTFE
9	Cover Bolt	ASTM A193 GR B8
10	Cover Bolt Nut	ASTM A194 GR 8
11	ID Tag	ASTM A276 T304

Dimensions and Weights

Valve Size	Weight (lbs)	Dimensions (inches)	
		A	B
½	---	6.50	3.3
¾	---	7.50	3.3
1	---	8.50	3.4
1 ½	---	9.50	3.9
2	---	11.50	4.1
2 ½	108.0	13.00	7.9
3	123.5	14.00	8.3
4	227.1	17.00	10.1
6	449.8	22.00	13.0
8	754.1	26.00	14.3
10	1375.9	31.00	18.3
12	1711.1	33.00	19.1

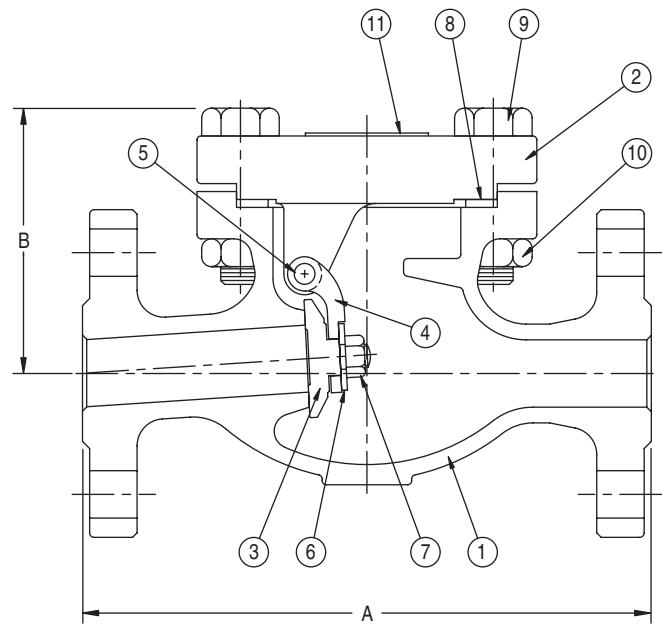


Fig. 4377