

FC-3ETH

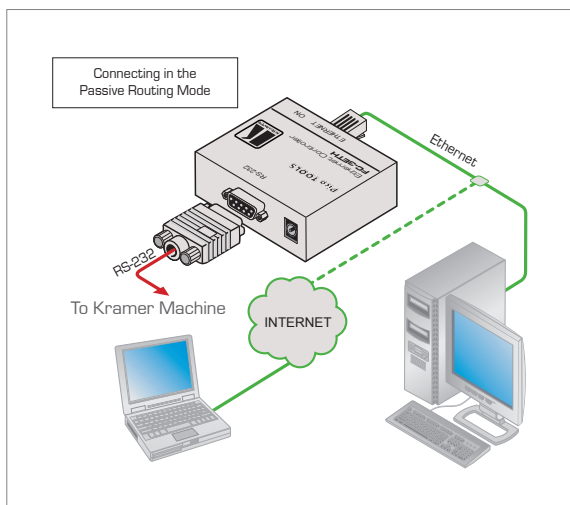
RS-232 to Ethernet Interface



The **FC-3ETH** is a bidirectional RS-232 to Ethernet interface. It allows RS-232 controllable Kramer devices to be controlled via an Ethernet or LAN connection.

FEATURES

- Interface - RS-232.
- Serial & Network Programming.
- Remote Control & IP Settings.
- Master & Slave Routing Modes.
- Built-In Web Page Server.
- Control - Windows®-based configuration management software for serial and network programming (including routing mode settings, network settings, serial settings, and destination device settings).
- Ultra-Compact Pico TOOLS™ - 4 units can be rack mounted side-by-side in a 1U rack space with the optional RK-4PT rack adapter.



TECHNICAL SPECIFICATIONS

ETHERNET INTERFACE:	10/100BaseT Ethernet.
SERIAL INTERFACES:	RS 232, 9-pin D-sub(M), signals: RX, TX, RTS, CTS, Ground.
NETWORK PROTOCOLS:	ICMP (ping), ARP, TCP, UDP.
POWER SOURCE:	12V DC, <80mA.
DIMENSIONS:	6.23cm x 5.23cm x 2.41cm (2.45" x 2.06" x 0.95") W, D, H.
WEIGHT:	0.115kg (0.25lbs) approx.
ACCESSORIES:	Power supply, mounting bracket.
OPTIONS:	RK-4PT 19" rack adapter.

