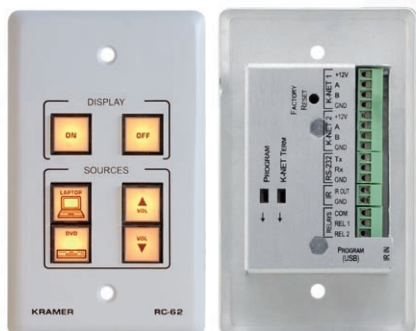
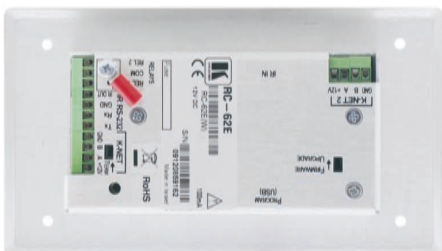
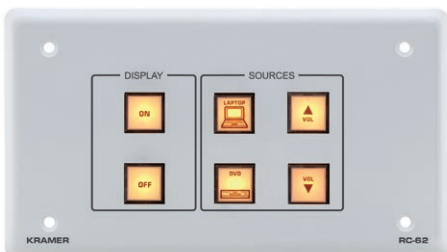


RC-62L/RC-62

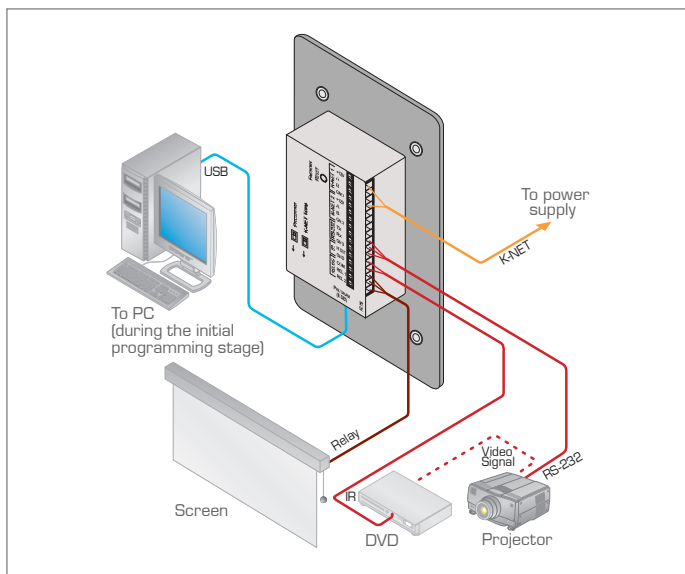
6-Button Room Controllers



▲ RC-62 (US version)



◀ RC-62 (European versions)



The **RC-62L** and **RC-62** are 6-button room controllers for multimedia rooms. The units can function either as standalone controllers or as part of the SummitView™ system to control audio components, video components and other room facilities such as lights and screens.

FEATURES

- 6 Programmable Buttons - Color, back-lit & label capable.
- Group Labels - Programmable back-lit LCD group labels (RC62L); printed group labels (RC-62).
- Macro Capability - Carries out multiple commands with a single press of a button.
- Command Banks - Each button offers multiple layers of functions for alternate behavior, toggle functionality, and more.
- Internal Clock - Schedules recurring tasks, defines system shutdown timer for economic operation, and more.
- 1 USB - For programming.
- 1 Bidirectional RS-232 - Controls AV equipment such as projectors, LCD and PDP displays, power amplifiers, switchers and scalers.
- 1 IR Out - Additional control port for AV equipment.
- IR Learning Function - Learns commands from IR remotes.
- 2 Relay Contact Closure Ports - Conveniently controls other room items related to the AV system such as raising and lowering drapes, the screen or the projector.
- 2 K-NET™ Connectors - Connects to other control panels or a central control processor.
- K-NET™ Control Channel - Provides power and control data to the wall plate controllers over a single cable.
- Wall Plate Sizes - RC-62/RC-62L - 1 gang US, RC-62E/RC-62EL - 2 gang EU. Available in white.

TECHNICAL SPECIFICATIONS

PORTS:	1 RS-232 on terminal block connectors; 2 K-NET™ on terminal block connectors; 1 USB port.
OUTPUTS:	2 relays on terminal block connectors (36V AC or DC, 2A, 60V AC maximum on non-inductive load); 1 IR emitter on terminal block connectors.
POWER SOURCE:	12V DC, 100mA.
FUSE:	500mA, FSMD 2920.
ADAPTER:	SummitView™ kits: 12V, 5A; Independent: 12V, 500mA.
DIMENSIONS:	6.9cm x 2.6cm x 11.4cm (2.72" x 1.02" x 4.49") W, D, H.
WEIGHT:	0.14kg (0.31lbs) approx.
ACCESSORIES:	Power supply, USB cable 0.91m (3ft), screwdriver, Kramer's Windows®-based configuration software.
OPTIONS:	Kramer 3.5mm to IR Emitter Control Cable (C-A35/IRE-10); 15m and 20m IR emitter extension cables.

