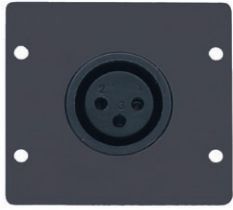


## WA-1 XLF

Wall Plate Insert - XLR (F)



XLR Wall Plate Insert

### FEATURES

- Front Panel Connection - XLR 3-pin (F).
- Rear Panel Connections - Solder cups.
- Size - Dual slot wall plate insert.

## WA-1 XLM

Wall Plate Insert - XLR (M)



XLR Audio Wall Plate Insert

### FEATURES

- Front Panel Connection - XLR 3-pin (M).
- Rear Panel Connections - Solder cups.
- Size - Dual slot wall plate insert.

## W-LM

Volume Control and Switch for Insert Plates

NEW



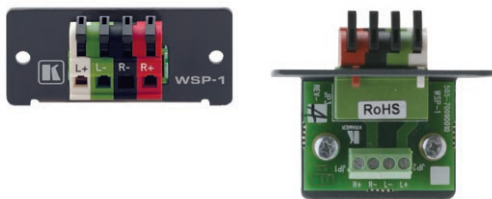
The **W-LM** is a combined volume control and push-ON/push-OFF switch module for line level audio signals.

### FEATURES

- Controls - Combined volume control and push-ON/push-OFF switch.
- Size - Single slot wall plate insert.

## WSP-1

Wall Plate Insert - Loudspeaker



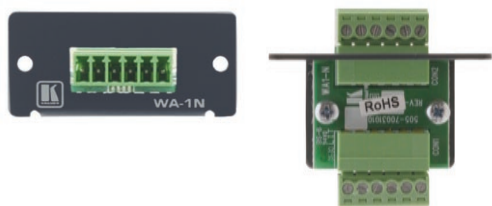
Loudspeaker Wall Plate Insert

### FEATURES

- Front Panel Connections - 4-pole with clips.
- Rear Panel Connections - 4-pin terminal block.
- Size - Single slot wall plate insert.

## WA-1 N

Wall Plate Insert - 6-Pole Terminal Block



Terminal Block Wall Plate Insert

### FEATURES

- Front Panel Connections - 6-pole terminal block.
- Rear Panel Connections - 6-pole terminal block.
- Size - Single slot wall plate insert.