

VS-21 HDCP-IR

2x1 HDCP Compliant DVI Video Switcher

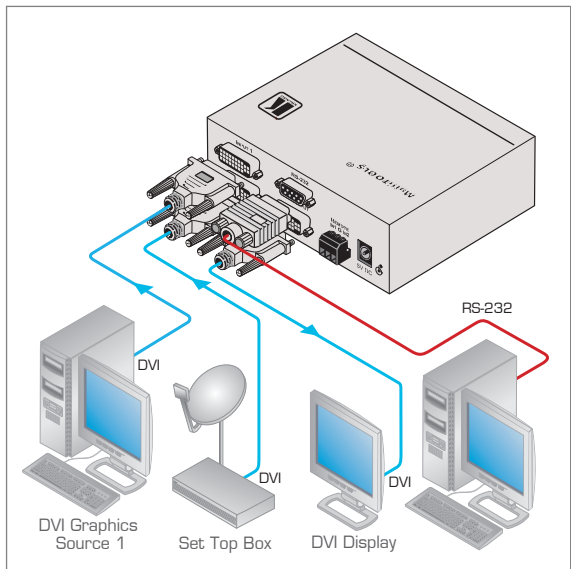
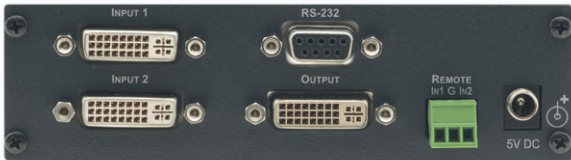
NEW



The VS-21 HDCP-IR is a high-quality switcher for DVI signals. It switches either of two inputs to a single output.

FEATURES

- Max. Data Rate - 2.25Gbps.
- HDCP Compliant.
- HDTV Compatible.
- EDID PassThru - Passes EDID/HDCP signals from source to display.
- Flexible Control Options - Front panel, RS-232 (K-Router™ Windows®-based software is included), contact closure & IR remote (included).
- Compact MultiTOOLS® - 3 units can be rack mounted side-by-side in a 1U rack space with the optional RK-13 universal rack adapter.



TECHNICAL SPECIFICATIONS

- INPUTS:** 2 DVI, 1.2Vpp on a DVI Molex 24-pin female connector; DDC signal 5Vpp (TTL).
- OUTPUT:** 1 DVI, 1.2Vpp on DVI Molex 24-pin female connectors; DDC signal 5Vpp (TTL).
- BANDWIDTH:** 2.25Gbps per graphic channel.
- POWER SOURCE:** 5V DC, 210mA.
- DIMENSIONS:** 14.3cm x 12.2cm x 4.36cm (5.63" x 4.8" x 1.72") W, D, H.
- WEIGHT:** 0.3kg (0.66lbs) approx.
- ACCESSORIES:** Power supply, infrared remote controller.
- OPTIONS:** Kramer DVI cables. RK-13 19" rack adapter.

