



Your design. Our commitment.

Bring your vision to light with Lutron GPS™ (Global Project Solutions)



Challenges in doing business globally

As the world gets smaller, your job requirements are getting bigger. You are constantly working on projects involving players from several continents. There are more details to attend to, more variables to consider, and more stakeholders to work with across space and time.

Culture and geographical challenges:

- Language barriers
- Working across time zones
- Varying environmental/climate conditions
- Metric measurements vs English measurements
- Local standards and codes

Technical challenges:

- Different local light fittings/fixtures
- Varying voltages, frequencies, wiring methods, and electrical backbox form factors
- Unfamiliar manufacturers of light fittings/fixtures, wiring devices, A/V equipment, building management systems, thermostats, and other equipment when trying to integrate systems

Global consistency requirement from clients:

- Demand for consistent experience around the world
- LEED® and other “green” standards

Sound familiar? Rest assured.

The **Lutron GPS™ (Global Project Solutions) team**, made up of sales staff, application engineers and service personnel all over the world, can help you.



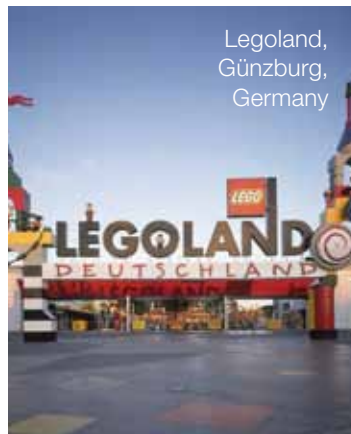
Lutron GPS™ team—Your global partner in delivering the best-in-class total light management solutions

In 1961, Lutron sold its first newly invented solid-state light dimmer. With this product, Lutron began its journey to becoming the worldwide leader in light control technology. Today, after years of working with clients all over the world, we are still dedicated to the same goal—offering our customers the most complete line of lighting control and shading solutions that meet or exceed their expectations, while staying within the budget.

Whether in New York, London, Dubai, Mexico City, Singapore, or anywhere else, you can be confident the **Lutron GPS team** is there to help you deliver the best light control solution for every project, from start to finish.

- 02 **Global locations**
- 04 **Global project example**
- 06 **Case study**
- 07 **Prestigious projects list**
- 08 **The Lutron difference**
- 10 **Expandable, energy-saving light control solutions**
- 12 **Global product guide**
- 14 **Global support reference guide**

Legoland,
Günzburg,
Germany



Capital Museum,
Beijing, China



Royal Mirage, Dubai,
United Arab Emirates



Global locations

The **Lutron GPS™ team** supports you in virtually every country and region in the world



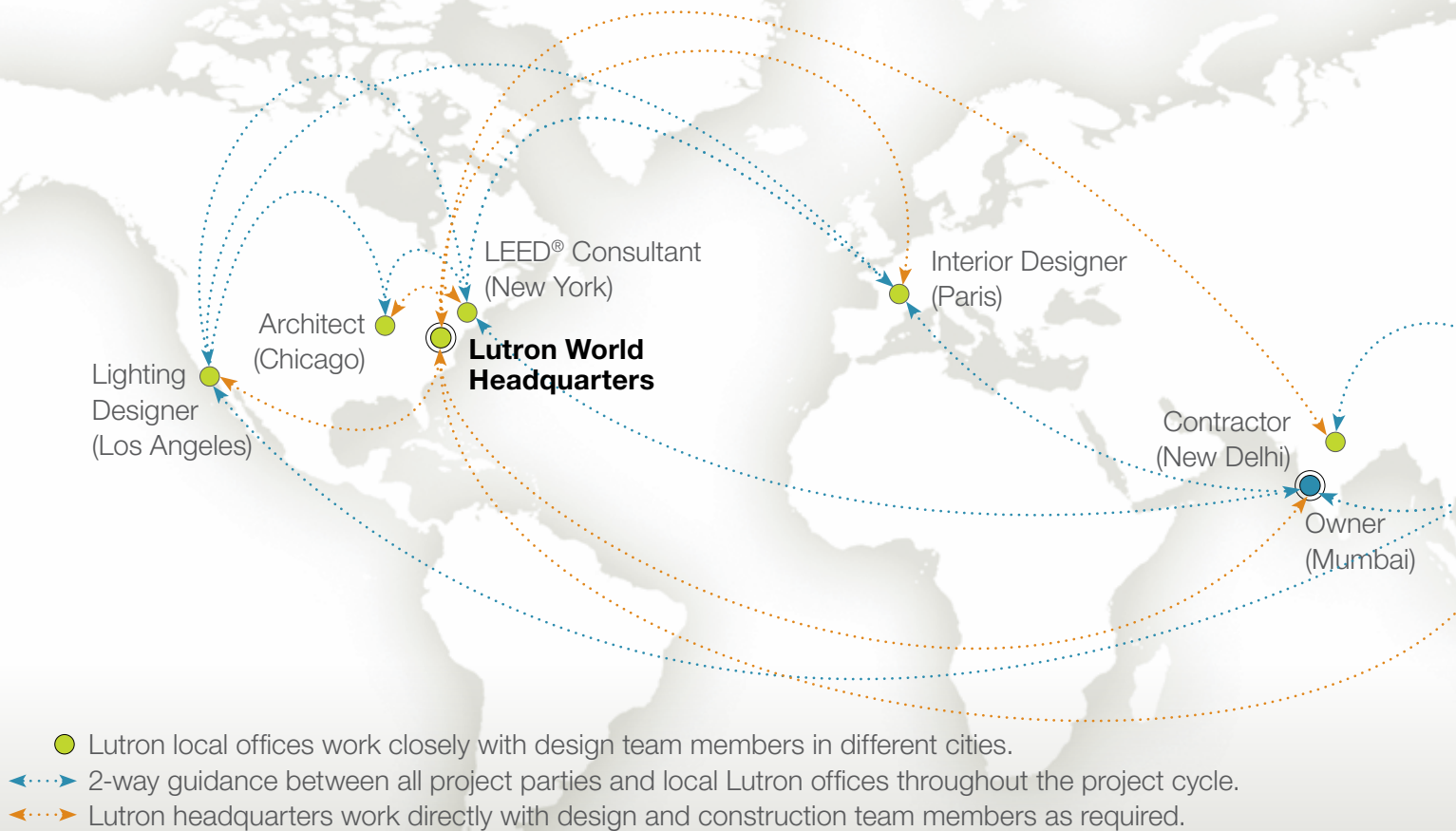
Lutron light control systems are installed in almost every country around the world, and regardless of where your job is, Lutron delivers the same superior service and support. The **Lutron GPS team** supports you through the entire project process—from concept development to start-up—providing information and experience where and when you need it.

See pages 14–17 for the languages we speak and detailed information on Lutron support worldwide.



Global project example

Let the **Lutron GPS™ team** help you navigate the project from start to finish—anywhere in the world



From years of experience with global projects, we understand that no two projects share exactly the same process. That's why the **Lutron GPS team** is available to help coordinate the project whenever and wherever it is necessary. Our goal is to achieve the result you envision for your client.

Throughout the process, the **Lutron GPS team** will

- collaborate on analyzing client needs and identifying the best solutions to meet project objectives and budgets
- play a proactive role in project team communications
- provide conceptual and detailed proposals on light control solutions
- participate in job coordination meetings on light control solutions
- offer 24/7 multilingual technical support

The Lutron GPS team will help you manage any project by working with everyone on the design team, no matter where they are located.

Architect

- Listen and understand project requirements
- Make value proposals, budget estimates, design assistance to meet project requirements
- Coordinate mock-ups when required
- Identify energy-saving light control strategies and solutions that can contribute to LEED® certification
- Provide global support to the design team

Interior Designer

- Harmonize with the design through colors/finishes, styles and fabric choices
- Coordinate technical issues such as the pocket size for shades, and strategies for minimizing wall clutter

Consulting Specifying Engineer

- Assist with drawings, submittals, specifications, budget estimates, and equipment selection

Lighting Designer

- Present control options
- Assist with drawings, submittals, specifications, budget estimates, and equipment selection

LEED® or Sustainability Consultant

- Identify energy-saving light control strategies and solutions that can contribute to LEED® certification

Contractor

- Review the specification and project design, and explain how the system is wired
- Assist with identifying local distributors
- Coordinate lead times and delivery
- Help with factory commissioning, pre-wire, installation, and post-installation

Owner

- Provide a solution with the highest quality and lowest life-cycle cost
- 8-year warranty program available
- Provide 24/7 technical support
- Provide global support to the project

We can also work closely with equipment and service providers of building management systems, information technologies, audio/video systems, etc.



Case study

Bank of China—Beijing, China A story of successful team effort



We have been working on projects worldwide for a long time. The Bank of China headquarters building, which was completed about 10 years ago, is an example of how we take pride in helping turn your vision into reality.

The Scenario

The Bank of China, Beijing, needed a lighting control solution to handle the complex lighting demands of this architecturally and culturally significant project.

The Design Team

The Bank of China in Beijing was a collaboration of key experts in the industry:

- Architect: Pei Partnership Architects, New York
- Lighting designer: Jerry Kugler of Kugler Tillotson Associates, New York
- Mechanical and electrical engineer: JB&B, New York
- Local architect: China Academy Of Building Research Architectural Design Institute, Beijing
- Contractor: China State Construction, Beijing
- Distributor: William Artists, Hong Kong

Local Lutron Presence

Lutron China and US teams coordinated between the stakeholders all around the world, and were able to meet and exceed all expectations including:

- voltage standards
- regulations and specification standards
- software support
- speaking the language of the key people
- advising on local design requirements
- ease of use
- vast energy savings

The Requirements

- Precise and reliable control of lighting to reveal the architectural details of the building, and help guide occupants and visitors through the space
- Local control, including override of universal presets
- A design to withstand power quality problems
- Line noise reduction
- Energy conservation
- Extended lamp life
- Ability to meet present and future lighting challenges

Lutron Service

Lutron presented the features and benefits of its solution on the construction site. The owner and the design team were impressed with the benefits of Lutron light control technologies, especially the RTISS technology (see page 08). Lutron coordinated efforts between the architect, mechanical and electrical engineer, and the lighting designer to come up with an integrated control solution to meet the owner's needs. Over 5,000 lighting circuits were controlled to create an innovative and reliable lighting control solution, which has stood the test of time.

The Result

A combination of traditional Chinese elements with an inspired brand of corporate modernism, The Bank of China headquarters is a highly recognizable symbol of modern China.

“Lutron provided support, reliability, and a great team effort. I have years of experience with them, and I knew they would support a client halfway around the world. And they have.”

Prestigious projects list

Lutron light control systems are installed in many of the world's most prestigious structures.

Below is a sampling of projects worldwide with Lutron products installed.

Convention Centers

Chivas Stadium, Guadalajara, Mexico
Ponce Convention Center, Puerto Rico
The Sands Convention Center, Singapore
Thyagraj Stadium, New Delhi, India

Corporate Offices

Bank of America Tower, New York, USA
International Financial Center, Hong Kong
JP Morgan, Lima, Peru
Microsoft Corporate Office, Gurgaon, India
World Financial Center Shanghai, China

Entertainment Venues

Legoland, Günzburg, Germany
National Theater London, England
Waves Cinemas, India

Educational Institutions

Harvard University, Cambridge, USA
King Abdullah University of Science and
Technology (KAUST), Thuwal, Saudi Arabia
Manchester University, England
Taiwan University, Taiwan
Yale University, New Haven, USA

Government Buildings

Department of Trade and Industry, England
Federal Ministry of Defense, Germany
National Police of Colombia, Bogotá, Colombia
The White House, USA

Hotels

Casino Thunderbird, Lima, Peru
Four Seasons Hotels, Worldwide
InterContinental Asiana Saigon,
Ho Chi Minh City, Vietnam
Mandarin Oriental Beijing, China
Marriott Ahmedabad, India
The Palm Jumeirah, Dubai, UAE
The Ritz Carlton Tokyo, Japan
Venetian Resort Hotel, Macau

Museums

Asian Civilization Museum, Singapore
National Museum of Chinese History,
Beijing, China
The British Museum, London, England

Public Buildings

Landmark Tower, Yokohama, Japan
Millennium Bridge, Gatehead, England
Statue of Liberty, New York, USA

Restaurants

Armani Exchange Café, Hong Kong
Centro 360 @ One Fullerton, Singapore
Geoffrey Restaurant at Ansal Plaza,
Ludhiana, India
Hard Rock Cafés, Worldwide

Retail Environments

Apple Stores, Worldwide
Centre Stage Mall, Noida, India
Dolce & Gabbana Stores, Worldwide
Giorgio Armani Store Tokyo, Japan
Harrods of London, England
La Garzota, Guayaquil, Ecuador
Louis Vuitton Stores, Worldwide

The Lutron difference

Everything we do at Lutron is based on our five principles.

Take care of the customer

Take care of the company

Take care of people

Innovate with a high standard of quality

Deliver value to the customer



Innovation

Lutron owns more than 250 patents and manufactures more than 15,000 products. For half a century, we have met and exceeded the highest standards of quality and service. Clear Connect™ RF Technology is one example of our innovation.

In 2008, Lutron introduced Clear Connect RF Technology—our latest advancement in reliable radio frequency (RF) communication. With seven RF-specific patents, Clear Connect RF Technology ensures reliable wireless communication between components, allowing for easy-to-install, versatile solutions for new construction and renovation.



Clear Connect RF Technology is built into many new Lutron products, including the popular Radio Powr Savr™ wireless sensors

Performance

More than 10 years ago, Lutron invented RTISS (Real-time Illumination Stability System) technology to address the issue of international power quality, specifically power line noise and its negative effect on dimmers. RTISS filters out line noises to the dimmer to ensure consistent, quality dimming performance regardless of local power conditions.



Conformance

Lutron international products meet or exceed the applicable standards around the world, giving you peace of mind.





International-style wallstations and matching accessories provide a consistent look in the design.

Aesthetics

Our product design starts with the customers, not the engineers. Lutron products are designed with functional, aesthetic, ergonomic and cognitive considerations in mind. The result is intuitive and timeless products.

Quality

Our commitment to quality starts with the components we use and is completed by the processes we follow. For instance, we performance-test 100% of our products to meet our own rigid quality standards. Customers receive products that have been tested to work the first time, every time.

A history of sustainability

At Lutron, sustainability is not a new concept. Since 1961, every Lutron product has been designed with industry-leading technology that saves energy and reduces greenhouse gas emissions.

Each year, Lutron solutions save over 9 billion kWh of energy.*

That's equivalent to saving:

- over 1 billion dollars in energy costs;
- as much energy as 2,000 windmills produce in one year;
- enough energy to light 4.5 million homes for one year; or
- as much CO₂ as 2 million acres of trees absorb in one year.

Lutron solutions can contribute up to 40 of the 110 possible LEED® points in NC (New Construction and Major Renovations). Our local LEED® professionals can help you with projects anywhere in the world.

Visit www.lutron.com/LEED for more information.



The Energy Foundation, San Francisco, CA
LEED® rating: Platinum



* Sources: Con Edison, Massachusetts Institute of Technology, Lutron sales data, and U.S. Department of Energy.

Expandable, energy-saving light control solutions

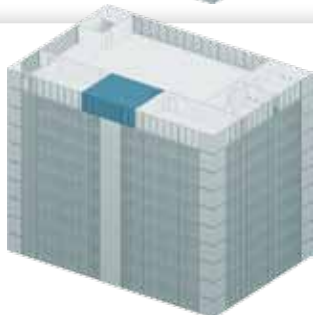
From a single-room to an entire building, Lutron provides completely expandable light control solutions.



0

Basic standalone solutions

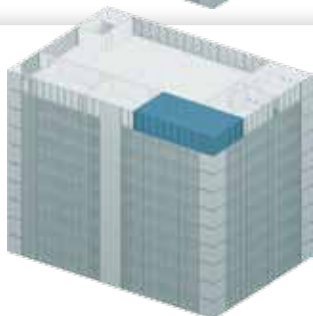
- Simple, standalone light controls that are perfect for retrofit applications with easy installation and setup
- The simplest and lowest-cost way to start saving energy



1

Single-space solutions

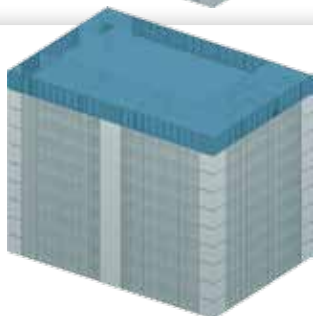
- Combine wireless occupancy sensors, daylight sensors, and dimming controls for a simple lighting system that saves energy and improves productivity



2

Small-area solutions

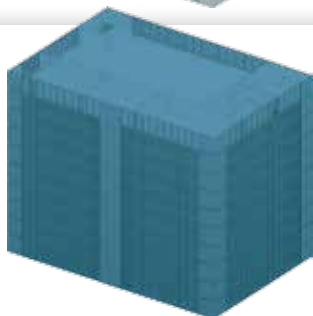
- Combine light and shade control to build wireless mini-systems that improve the usability of a multi-purpose space and save more energy



3

Tie multiple rooms together—up to an entire floor

- Expand the system with digitally addressable dimming ballasts for significant yearly savings from reduced energy costs, increased lamp life, and lower maintenance costs
- Change lighting fixture groups as floorplan changes, with no need for rewiring



4

Control an entire building or campus

- Manage, monitor and report on all the lighting energy usage in a building for optimal energy performance and increased productivity, while minimizing maintenance and operating costs

Each year, Lutron introduces innovative, new products to the global market.



Global guestroom light control solution

The intuitive guestroom solution is a cost-effective, simple-to-install lighting and shading solution for hotel guestrooms. Available in both wired and wireless options for new construction or renovations, this solution saves energy and puts control of room lighting in the hands of the guest. It can also integrate easily with other guestroom technologies.



Quantum® total light management

Quantum total light management solution manages both electric light and daylight to not only save energy and simplify operations, but also improve the comfort and productivity of the people in the building. The unique Green Glance® software (shown above) demonstrates the real-time environmental and energy savings that result from Quantum installations.

With Quantum, The New York Times Building is using 70% less lighting power than designed. ➤

The New York Times Building, New York, New York, USA



Global product guide ¹

• **NEW!**

100V/200V

220V–240V ²

Dimmers

Diva®
Maestro®
Nova T☆®
Skylark®
Spacer®

Lyneo™
• Pico® Wireless Control ⁴
Rania®
Rania Eco-minder™
Rania IR®
• Rania Wireless Switch ⁴
Solina™

Entire-room lighting controls

GRAFIK Eye® 3000/4000
GRAFIK Eye QS

GRAFIK Eye 3000/4000
GRAFIK Eye QS
• GRAFIK Eye QS Wireless ⁴
• Global Guestroom Solution
GRAFIK Integrale™

Sensors

Wired Daylight Sensors
Wired Occupancy/
Vacancy Sensors

Wired Daylight Sensors
Wired Occupancy/Vacancy Sensors
• Radio Powr Savr™ Wireless Daylight Sensors ⁴
• Radio Powr Savr Wireless Occupancy/Vacancy Sensors ⁴

Larger commercial lighting control systems

GRAFIK 5000™
GRAFIK 6000®
GRAFIK 7000™
LCP128™
Softswitch128®

GRAFIK 5000
GRAFIK 6000
GRAFIK 7000
LCP128
Softswitch128
• EcoSystem® ²
• Energi Savr Node™
• Quantum®

Fluorescent dimming ballasts and LED drivers

Compact SE™
Hi-lume®
Hi-lume 3D

• Compact SE ²
Hi-lume ²
Hi-lume 3D ²
• Eco-10® ²
• EcoSystem ²

Whole-home lighting controls

HomeWorks®

HomeWorks

Shading Solutions

- Sivoia QED® and Sivoia® QS motorization technologies for:
 - roller shades
 - drapery tracks
 - Roman shades
 - tensioned shades

- Sivoia QED, Sivoia QS, and Sivoia QS Wireless ⁴ motorization technologies for:
 - roller shades
 - drapery tracks
 - Roman shades
 - tensioned shades
- Hyperion™ Solar-adaptive Shades

110V – 127V³

Abella™	• Eco-dim® Series	• Maestro with built-in Occupancy Sensor	• Pico Wireless Control ⁴
Attache®	• Eco-minder™ Series	Maestro IR®	Skylark
Ariadni®	• Eco-timer Series	Maestro Wireless® ⁴	Spacer
Ceana™	Glyder®	• MeadowLark®	Spacer System®
Centurion®	Lumea®	Nova®	Rotary
Credenza®	Lyneo Lx	Nova T☆	Vareo®
Diva	Maestro		Vierti®

GRAFIK Eye 3000/4000
 GRAFIK Eye QS
 • GRAFIK Eye QS Wireless⁴
 • Stanza™⁴

Wired Daylight Sensors
 Wired Occupancy/Vacancy Sensors
 • Radio Powr Savr™ Wireless Daylight Sensors⁴
 • Radio Powr Savr Wireless Occupancy/Vacancy Sensors⁴

GRAFIK 5000	EcoSystem
GRAFIK 6000	• Energi Savr Node
GRAFIK 7000	Quantum
LCP128	
Softswitch128	

Compact SE	• Hi-lume A-Series LED Drivers
Hi-lume	Tu-Wire®
Hi-lume 3D	TVE™
Eco-10	
EcoSystem	

HomeWorks	AuroRA® ⁴
• HomeWorks QS ⁴	• RadioRA® 2 ⁴

- Sivoia QED, Sivoia® QS, and Sivoia QS Wireless⁴ motorization technologies for:
 - roller shades
 - drapery tracks
 - Roman shades
 - tensioned shades
 - Kirbé™ vertical draperies
- Hyperion Solar-adaptive Shades



The Innovative Light Management Brochure is available in several languages.

• NEW!

- 1 For detailed product availability for each country, contact your Lutron representative.
- 2 All products meet CE standards except for Compact SE, Hi-lume, Hi-lume 3D, Eco-10, and EcoSystem.
- 3 For products available for Mexico, 277V, and 347V, contact your Lutron representative.
- 4 Radio frequency requirements vary in different countries and regions. Contact your Lutron representative for more information.

Global support reference guide

For almost 50 years, Lutron has been delivering specialized service on a global scale with engineering solutions to meet the needs of each customer. The **Lutron GPS™ team** will always be available wherever the project is located.

The **Lutron GPS team** speaks the following languages:

- Arabic
- Catalanian
- Chinese (Mandarin and Cantonese)
- Dutch
- English
- Farsi
- Finnish
- French (Canada)
- French (France)
- German
- Hebrew
- Indian (Hindi, Punjabi, Marathi, Gujarati, Bengali, Kannada, and Tamil)
- Italian
- Japanese
- Lingala
- Polish
- Portuguese (Brazil)
- Portuguese (Portugal)
- Russian
- Spanish (Latin America)
- Spanish (Spain)
- Swahili

In addition, our local partners are fluent in many localized languages to ensure clear communication on every project.

See back cover for our office locations around the world.

Voltage information is for reference only. For a specific project, please work with your Lutron representative.

country	voltage ¹	supported from
Africa		
Algeria	230V(CE)	Paris
Angola	220V	London
Benin	220V	London
Botswana	230V	London
Burkina Faso	220V	London
Burundi	220V	London
Cameroon	220V	London
Canary Islands	220V	Madrid
Cape Verde	220V	London
Central African Republic	220V	London
Chad	220V	London
Comoros	220V	London
Congo, Dem. Rep. of (former Zaire)	220V	London
Congo, People's Rep. of	230V	London
Cote d'Ivoire	220V	London
Djibouti	220V	London
Egypt	220V	Dubai
Equatorial Guinea	220V	London
Eritrea	230V	London
Ethiopia	220V	London
Gabon	220V	London
Gambia	230V	London
Ghana	230V	London
Guinea	220V	London
Guinea-Bissau	220V	London
Ivory Coast (See Cote d'Ivoire)		
Kenya	240V	London
Lesotho	220V	London
Liberia	120V	London
Libya	127V	London
Madagascar	220V	Paris
Malawi	230V	London

country	voltage ¹	supported from
Mali	220V	London
Mauritania	220V	London
Mauritius	230V	London
Morocco	127/220V	Paris
Mozambique	220V	London
Namibia	220V	London
Niger	220V	London
Nigeria	240V	London
Rwanda	230V	London
Réunion Island	220V	London
São Tomé and Príncipe	220V	London
Senegal	230V	London
Seychelles	240V	London
Sierra Leone	230V	London
Somalia	220V	London
South Africa	220/230V	London
Swaziland	230V	London
Tanzania	230V	London
Togo	220V	London
Tunisia	230V	Paris
Uganda	240V	London
Zambia	230V	London
Zimbabwe	220V	London

Asia

Afghanistan	220V	Coopersburg
Bahrain	230V	Dubai
Bangladesh	220V	New Delhi
Bhutan	230V	New Delhi
Brunei	240V	New Delhi
Cambodia	230V	Singapore
China, People's Republic of	220V	Shanghai/Beijing
East Timor	220V	Singapore
Hong Kong	220V	Hong Kong
India	230V	New Delhi

country	voltage ¹	supported from
Indonesia	127/230V	Singapore
Iraq	230V	Dubai
Israel	220V	London
Japan	100/200V	Tokyo
Jordan	230V	Dubai
Kazakhstan	220V	London
Kuwait	240V	Dubai
Kyrgyzstan	220V	London
Laos	230V	Singapore
Lebanon	110/220V	Dubai
Macau	220V	Hong Kong
Malaysia	240V	Singapore
Maldives	230V	New Delhi
Mongolia	220V	London
Myanmar (formerly Burma)	230V	New Delhi
Nepal	230V	New Delhi
Oman	240V	Dubai
Pakistan	220V	London
Philippines	220V	Singapore
Qatar ²	240V	Dubai
Russia	220V	London
Saudi Arabia ²	127/220V	Dubai
Singapore	230V(CE)	Singapore
South Korea	220V	Tokyo
Sri Lanka	230V	New Delhi
Syria	220V	Dubai
Tajikistan	220V	London
Taiwan	110V	Hong Kong
Thailand	220V(CE)	Singapore
Turkey	230V(CE)	London
Turkmenistan	220V	London
United Arab Emirates ²	220V	Dubai
Uzbekistan	220V	London
Vietnam	127/220V	Singapore
Yemen, Rep. of	220/230V	Dubai

Continued on next page ➤

1 Primary source: www.kropla.com/electric2.htm

2 Scheduled to require products with CE Marking in 2011.

Global support reference guide

country	voltage ¹	supported from	country	voltage ¹	supported from
Europe			Macedonia (FYROM)	220V(CE)	London
Albania	220V	London	Madeira	220V	Madrid
Andorra	230V	Barcelona	Malta	240V(CE)	Paris
Armenia	220V	London	Moldova	220/240V	London
Austria	230V(CE)	Berlin	Monaco	127/220V	Paris
Azerbaijan	220V	London	Montenegro	220V	London
Azores	220V	Madrid	Netherlands	230V(CE)	London
Balearic Islands	220V	Barcelona	Netherlands Antilles	127/220V	London
Belarus	220V	London	Norway	230V(CE)	London
Belgium	230V(CE)	London	Northern Ireland (see United Kingdom)		
Bosnia	220V	London	Poland	230V(CE)	London
Bulgaria	230V(CE)	London	Portugal	230V(CE)	Madrid
Channel Islands	230V	London	Romania	230V(CE)	London
Croatia	230V(CE)	London	San Marino	230V	Milan
Cyprus	240V(CE)	Paris	Scotland (See United Kingdom)		
Czech Republic	230V(CE)	London	Serbia	220V	London
Denmark	230V(CE)	London	Slovak Republic	230V(CE)	London
England (See United Kingdom)			Slovenia	220V(CE)	London
Estonia	230V(CE)	London	Spain	230V(CE)	Barcelona, Madrid
Faroe Islands	220V	London	Sweden	230V(CE)	London
Finland	230V(CE)	London	Switzerland	230V(CE)	London
France	230V(CE)	Paris	Ukraine	220V	London
Georgia	220V	London	United Kingdom	230V(CE)	London
Germany	230V(CE)	Berlin	Vatican City	230V(CE)	Milan
Gibraltar	240V	London	Wales (See United Kingdom)		
Great Britain (See United Kingdom)					
Greece	220V(CE)	London	North America/ Central America/Caribbean		
Hungary	230V(CE)	London	Anguilla	110V	Coopersburg
Iceland	220V(CE)	London	Antigua	230V	Coopersburg
Ireland (Eire)	230V(CE)	London	Aruba	127V	Coopersburg
Isle of Man	240V	London	Bahamas	120V	Coopersburg
Italy	230V(CE)	Milan	Barbados	115V	Coopersburg
Latvia	220V(CE)	London	Belize	110/220V	Chihuahua
Liechtenstein	230V(CE)	London			
Lithuania	220V(CE)	London			
Luxembourg	220V(CE)	London			

country	voltage ¹	supported from
Bermuda	120V	Coopersburg
Canada	120/347V	Coopersburg
Cayman Islands	120V	Coopersburg
Costa Rica	120V	Chihuahua
Dominica	230V	Chihuahua
Dominican Republic	110V	Chihuahua
El Salvador	115V	Chihuahua
Greenland	220V	Coopersburg
Grenada (Windward Is.)	230V	Coopersburg
Guadeloupe	230V	Chihuahua
Guatemala	120V	Chihuahua
Haiti	110V	Chihuahua
Honduras	110V	Chihuahua
Jamaica	110V	Coopersburg
Martinique	220V	Coopersburg
Mexico	127V	Chihuahua
Montserrat (Leeward Is.)	230V	Chihuahua
Nicaragua	120V	Chihuahua
Panama	110V	Chihuahua
Puerto Rico	120V	Coopersburg
St. Kitts and Nevis (Leeward Is.)	230V	Coopersburg
St. Lucia (Windward Is.)	240V	Coopersburg
St. Vincent (Windward Is.)	230V	Coopersburg
Trinidad & Tobago	115V	Coopersburg
United States of America	120/277V	Coopersburg
Virgin Islands (British and U.S.)	115V	Coopersburg

Oceania

American Samoa	120V	Singapore
----------------	------	-----------

country	voltage ¹	supported from
Australia	240V	Singapore
Cook Islands	240V	Singapore
Fiji	240V	Singapore
Guam	110V	Singapore
Kiribati	240V	Singapore
Marshall Islands	110V	Singapore
Micronesia (Federal States of)	120V	Singapore
Nauru	240V	Singapore
New Caledonia	220V	Singapore
New Zealand	230V(CE)	Singapore
Palau	110-120V	Singapore
Palmyra Atoll	120V	Singapore
Papua New Guinea	240V	Singapore
Samoa	230V	Singapore
Solomon Islands	220V	Singapore
Tahiti	110/220V	Singapore
Tonga	240V	Singapore
Tuvalu	220/240V	Singapore
Vanuatu	230V	Singapore

South America

Argentina	220V	Chihuahua
Bolivia	220/230V	Chihuahua
Brazil	110/220V	São Paulo
Chile	220V	Chihuahua
Colombia	110V	Bogotá
Ecuador	120-127V	Chihuahua
Falkland Islands	240V	Chihuahua
French Guiana	220V	Chihuahua
Guyana	240V	Chihuahua
Paraguay	220V	Chihuahua
Peru	220V	Chihuahua
Suriname	127V	Chihuahua
Uruguay	220V	Chihuahua
Venezuela	120V	Chihuahua

Contact your Lutron representative for countries not listed.

¹ Primary source: www.kropla.com/electric2.htm

US World Headquarters

Lutron Electronics Co., Inc
7200 Suter Rd
Coopersburg, PA 18036-1299 USA
Tel: +1.610.282.3800
Technical Support: 800.523.9466
Customer Service: 888.LUTRON1
(888.588.7661)
intsales@lutron.com
www.lutron.com

Brazil, São Paulo

Lutron BZ do Brasil
Av. Ipiranga, 104 - 2º e 3º andares
São Paulo - SP - Brasil - 01046-918
Tel: +55.11.3257.6745
brasilsales@lutron.com

Canada

Supported by US World Headquarters.
See contact information above.

China, Beijing

Lutron GL Electronics (Shanghai)
Co., Ltd.— Beijing Branch
5th Floor, China Life Tower
No. 16, Chaowai St.
Chaoyang District
Beijing 100020, China
Tel: +86.10.5877.1818
lutronchina@lutron.com

China, Shanghai

Lutron GL Electronics (Shanghai)
Co., Ltd.— Shanghai Branch
Suite 7, 39th Floor, Plaza 66
1266 Nan Jing West Road, Puxi
Shanghai 200040, China
Tel: +86.21.6288.1473
lutronchina@lutron.com

France, Paris

Lutron LTC SARL—Paris
101, avenue des Champs Elysees
75008 Paris, France
Tel: +33.1.56.52.93.01
lutronfrance@lutron.com

Germany, Berlin

Lutron Electronics GmbH—Berlin
Landsberger Allee 201
13055 Berlin, Germany
Tel: +49.309.710.4590
lutrongermany@lutron.com

Hong Kong

Lutron GL Ltd.—Hong Kong
Unit 2808, 28/F
248 Queens Road East
Wanchai, Hong Kong
Tel: +852.2104.7733
lutronhk@lutron.com

India, Bangalore

Lutron GL Sales and Services
Pvt. Ltd. (Bangalore)
15th Floor, Concorde Towers
U.B.City, 1 Vittal Road
Bangalore, India 560001
Tel: +91.80.4030.0485
lutronindia@lutron.com

India, Mumbai

Lutron GL Sales and Services
Pvt. Ltd. (Mumbai)
Trade Centre, Regus 1st Floor
Bandra Kurla Complex
Bandra Mumbai, India 400051
Tel: +91.22.4070.0867
lutronindia@lutron.com

India, New Delhi

Lutron GL Sales and Services Pvt. Ltd.
Level 6, JMD Regent Square
Mehrauli Gurgaon Road
Gurgaon, Haryana, India 122001
Tel: +91.124.471.1900
lutronindia@lutron.com

Italy

Lutron LDV S.r.l
Tel: 800.979.208
lutronitalia@lutron.com

Japan, Tokyo

Lutron Asuka Co., Ltd.—Tokyo
No. 16 Kowa Bldg. 4F
1-9-20 Akasaka, Minato-ku
Tokyo 107-0052, Japan
Tel: +81.3.5575.8411
asuka@lutron.com

Mexico, Chihuahua

Lutron CNC S de RL de CV
Rudyard Kipling No. 11530
Complejo Industrial Chihuahua
Chihuahua C.P. 31109, Mexico
Tel: 888.235.2910
informacion@lutron.com

Mexico, Mexico City

Lutron CN S de RL de CV
AV. Patriotismo 229 Piso B
Sand Pedro Delos Pinos
Mexico, D.F. 03800
Tel: +52.(33).3128.0575
informacion@lutron.com

Singapore

Lutron GL Ltd.—Singapore
15 Hoe Chiang Road
#07-03 Euro Asia Centre
Singapore 089316
Tel: +65.6220.4666
asiasales@lutron.com

Spain, Barcelona

Lutron CC, SRL—Barcelona
Gran Via Carlos III, 84 planta 4 a
08028 Barcelona, Spain
Tel: +34.93.496.5742
lutroniberia@lutron.com

Spain, Madrid

Lutron CC, SRL—Madrid
Calle Orense 85
28020 Madrid, Spain
Tel: +34.91.567.8479
lutroniberia@lutron.com

UAE, Dubai

Lutron GL Ltd.
P.O. Box 54759
Dubai, UAE
Tel: +971.4.2991224
lutronme@lutron.com

United Kingdom, London

Lutron EA Ltd.—London
Lutron House
6 Sovereign Close
Wapping, London E1W 3JF
England
Tel: +44.207.702.0657
lutronlondon@lutron.com

www.lutron.com



© 06/2010 Lutron Electronics Co., Inc. | P/N 367-1773

LEED is a registered trademark of the United States Green Building Council.

