

NEW!
Venetian blinds with
Intelligent Tilt Alignment™



The Avant Collection™ | residential shading solutions





NEW Venetian blinds with Intelligent Tilt Alignment™
Above and front cover - Color: Tuberose, Queen Anne valance

The Avant Collection™ by Lutron®

Letting light into our homes and controlling it with the touch of a button is powerful. It acknowledges daylight as a practical, sustainable light source and recognizes that technology has advanced to allow for its precision control.

Lutron, the world leader in light control, has brought innovation to electronically controlled shades by creating new shading systems, new technologies, and by providing a palette of materials that brings these solutions to life.

The Avant Collection by Lutron is a new chapter in precision control of shades that are innovative, customizable, and stylish.

NEW Venetian blinds with Intelligent Tilt Alignment™	pg 02
NEW Venetian blinds color and style options	pg 06
Kirbé® vertical drapery system	pg 12
Roman shades with CERUS® safety technology	pg 16
Complete drapery systems	pg 22
Cornice top treatments	pg 26
Fabric offering	pg 28
Avant Collection notes	pg 46
Total light control	pg 51

NEW Venetian blinds
with Intelligent Tilt Alignment™



Lutron® has redefined
Venetian blinds

Venetian blinds are an attractive and effective way to ensure privacy, while still allowing daylight to filter into a space.

Lutron exclusive Intelligent Tilt Alignment™ technology maintains uniform tilt and lift positions across blinds, combines smooth, quiet motion with separate control of tilt and lift, and features presets to recall blinds to a predetermined height and tilt angle for the ultimate in performance and style.



NEW Venetian blinds with Intelligent Tilt Alignment™



Style

Lutron® Venetian blinds ensure the perfect complement to any home décor. Options include an extensive line of genuine hardwoods, available in designer paints or rich wood stains, painted or brushed aluminum choices, decorative tapes, and 4 valance styles. All slats come with finished ends for the finest in quality.



Venetian color and finish options

Lutron offers a variety of colors and finishes. Custom color matching is available for the Elite Collection only. Customers Own Material (COM) may also be used. Contact Customer Service for details.



Decorative tapes (optional)

Decorative tapes conceal the operational cords while adding a colorful accent to Venetian blinds. Decorative tapes also increase light blockage when slats are in a closed position.

Lutron® innovation

Lutron Venetian blinds offer independent control of lift and tilt

- Independent control adjusts height of blinds and provides access to a window without affecting tilt

Intelligent Tilt Alignment™ maintains uniform tilt and lift positions across multiple shades

- Tilt position between adjacent shades will remain within 1/16th of an inch
- Blinds feature Intelligent Hembar Alignment™, a hallmark of all Lutron shading systems, which maintains hembar position within 1/8th of an inch at all times

System provides the ability to store and recall presets

- Blinds go to a pre-determined height and tilt angle when a preset is recalled
- Multiple presets can be defined for the same blind or group of blinds

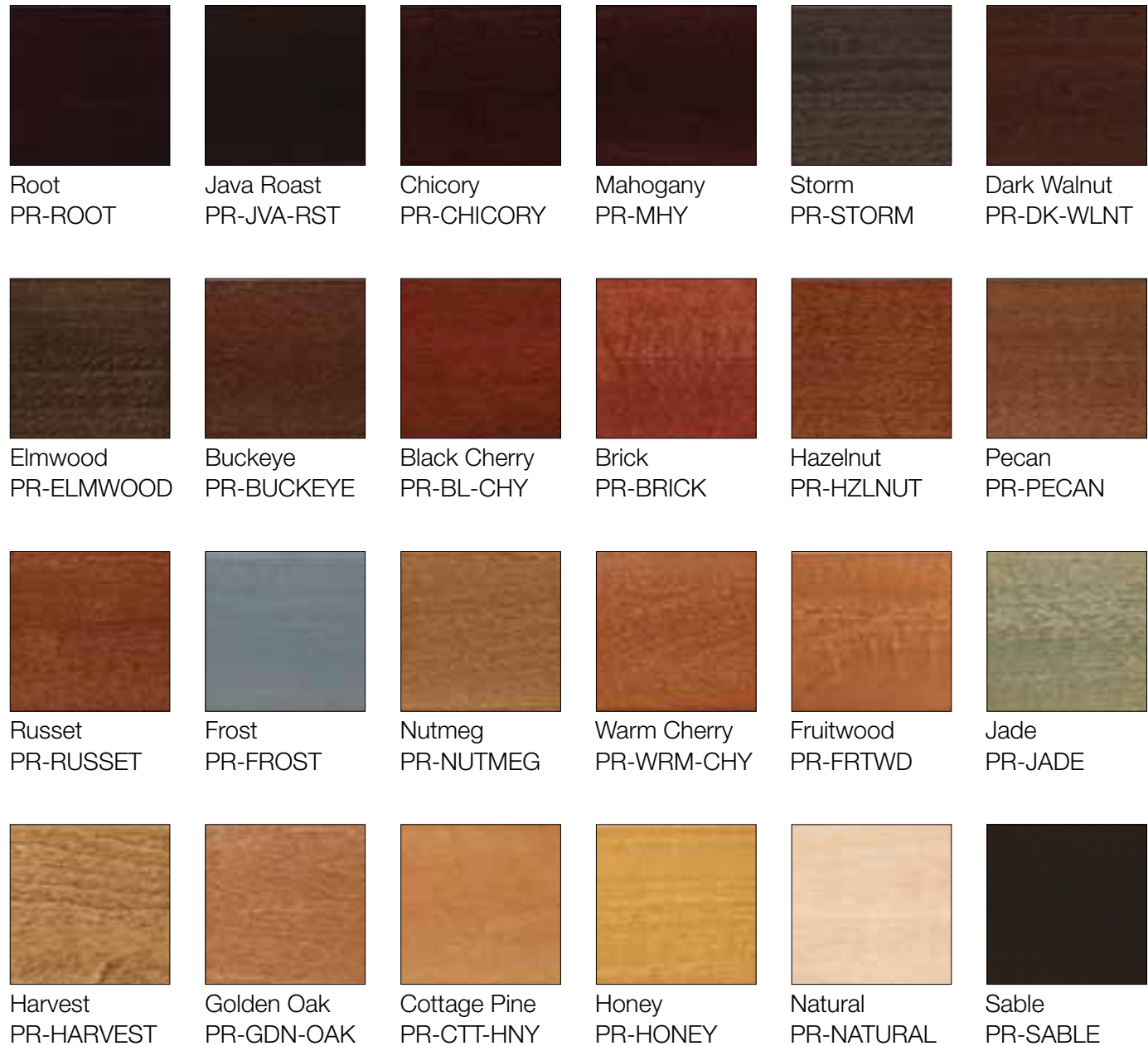
Venetian blind controls offer tilt adjustment buttons for precise positioning

Range of tilt can be adjusted from full tilt in either direction down to a fixed tilt angle

Elite Collection



Premium Collection



Please note that due to the printing process, the color of material swatches may not be exact. When selecting, please refer to a physical sample available in the Venetian Binder, P/N VENETIAN-BINDER. For more information, contact Customer Service at 1.888.LUTRON1.

aluminum slats

Venetian blinds with Intelligent Tilt Alignment™



decorative tapes

Venetian blinds with Intelligent Tilt Alignment™



valance styles

Venetian blinds with Intelligent Tilt Alignment™

Lutron® offers four valance styles to cover the headrail system. Valances come standard on all Venetian blinds, however, customers can also choose to order a blind without this decorative top treatment. Additionally, valances can be ordered separately for use with other shading applications or if a different finish than the Venetian blind slats is desired.

For inside mount applications, valances will be 0.25 in. less than order width; headrails and slats will be 0.5 in. less than order width.

For outside mount applications, valances will have returns. The default return depth is 2.75 in., which will bring the valance return flush to the wall when the headrail brackets are mounted to the wall. Other return depths can be specified to account for different mounting situations, such as partial recess mounting or mounting on trim.



Camelot



Cavalier



Majesty



Queen Anne¹

system capacities

Wooden slats

Width range: 24 in. - 96 in. (610 mm - 2438 mm)
Height range: 12 in. - 120 in. (305 mm - 3048 mm)
Maximum system size: 80 sq. ft. (7 sq. m)

Aluminum slats

Width range: 24 in. - 144 in. (610 mm - 3658 mm)
Height range: 12 in. - 120 in. (305 mm - 3048 mm)
Maximum system size: 120 sq. ft. (11 sq. m)

Frequently Asked Questions

What systems are compatible with Venetian Blinds?

Venetian blinds are available for Sivoia® QS, Sivoia QS Wireless, RadioRA® 2 and HomeWorks® QS.

If you would like to integrate Venetian blinds into an existing HomeWorks Illumination system, there is an application note available online that details how wired Sivoia QS shading solutions can interface via RS-232. Please contact Shading Quotes or Technical Support for details.

What is the standard lead-time?

The standard lead-time is 30 business days.

Do Lutron Venetian Blinds have a fire retardant (FR) rating?

Wooden blinds are not FR rated. However, it is possible to treat the material or use a non-wood material such as aluminum or a wood substitute to achieve FR rating status. Wood substitute Venetian blinds are not standard in the Lutron line, but can be sourced as a custom solution. Please contact Shading Quotes for details.

How thick is a single slat?

Wooden slats are approximately 0.125 in. (3.17 mm) thick, while Aluminum slats are .008 in. (0.2 mm) thick.

What is “stack”?

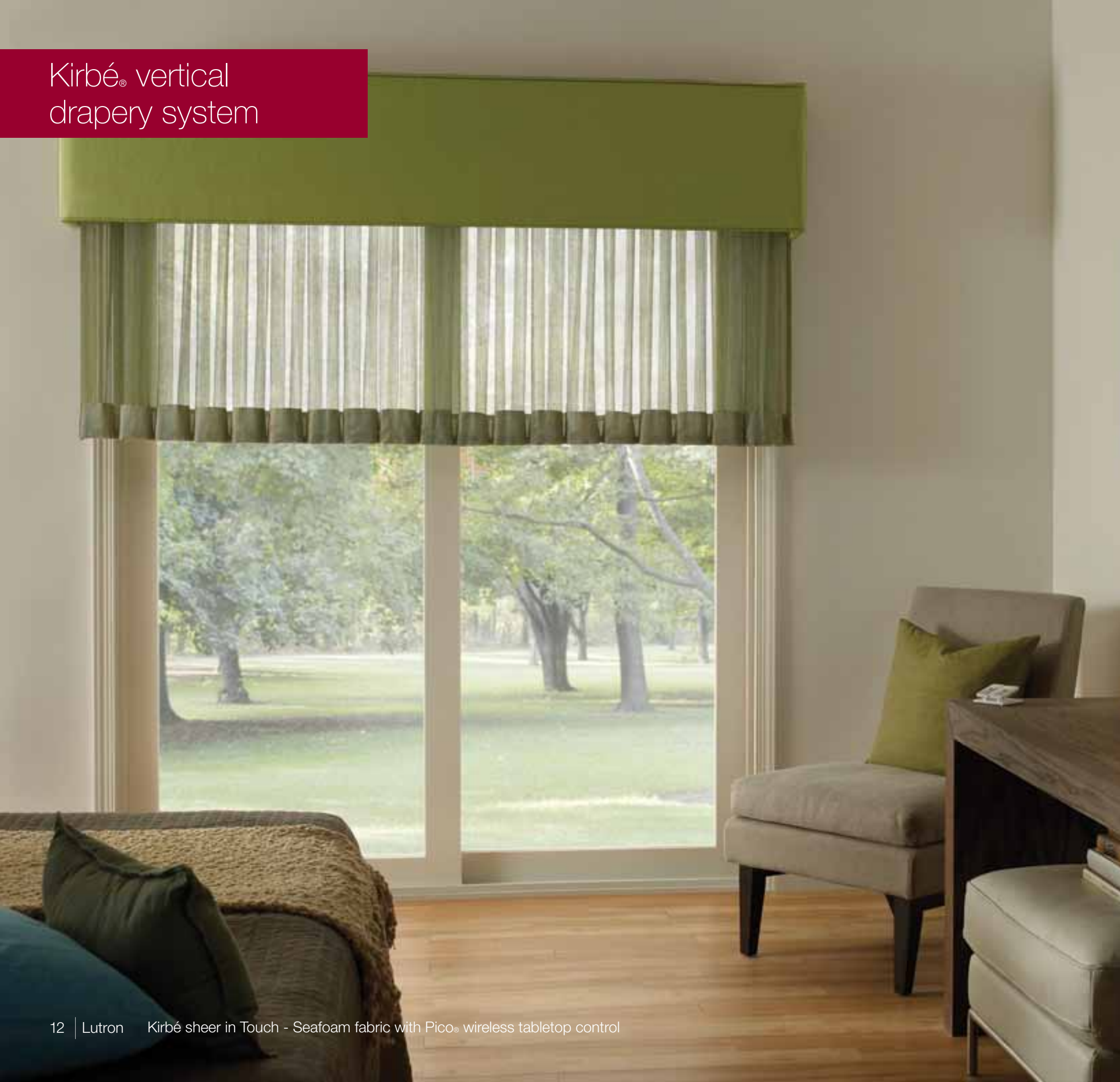
Stack results when the slats of the Venetian blinds amass on top of each other when the blind is fully open, blocking the top portion of the window. To preserve the full outdoor view, create a recessed pocket or simply mount the blind above the window frame, making sure to account for additional system height.

Can stack be calculated?

Yes. This parameter is reported in the Shade Configuration Tool (SCT) and only includes the height of the slats and bottom rail – valance and headrail are not included in this calculation. To calculate total height from the ceiling to the base of the bottom rail, add 3.75 in. to the reported stack height.



Kirbé® vertical drapery system



Lutron® has taken drapery in a whole new direction

An industry first – this entirely new type of window treatment smoothly pulls the drapery up and completely out of the way at the touch of a button. The Kirbé® vertical drapery system captivates with its unique and unexpected motion.



Winner of two 2010 Window Covering Manufacturers Association Awards:



Product of the Year



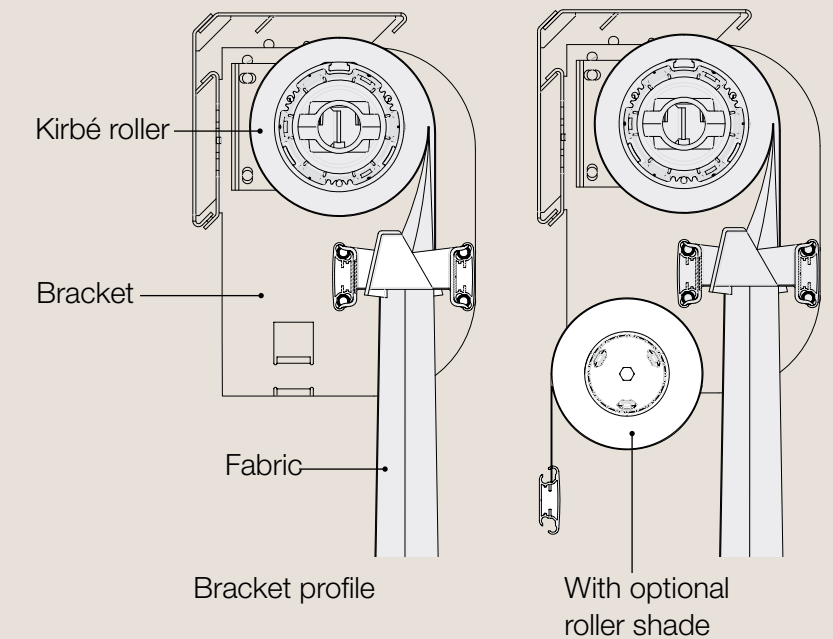
Most Innovative Overall Design - Motorization

Winner of a 2010 TOPS Award from Electronic House magazine:



Motorized Window Treatments and Windows

Kirbé® vertical drapery system



Style

Kirbé is offered with sheer or privacy fabrics that range from traditional neutrals to bold, shimmering patterns. Custom printing is also available (see pg 47).



Kirbé pleat
Unique, yet most similar to a ripplefold pleat.



Optional integrated Lutron® roller shade
Pair with a Lutron blackout roller shade for privacy and light blocking capability.



The finishing touch
Top with a Lutron cornice (pg. 26) to easily finish the look without the need for a recessed pocket.

Lutron® innovation

Kirbé® eliminates “stack back” – the mass of fabric remaining when a traditional drapery is opened. Stack back equates to one-third the total width of traditional drapery which blocks a great portion of your view. Utilizing the Kirbé increases the number of applications where you can use drapery, including tight spaces, French or sliding doors, or floor-to-ceiling windows by recessing the system into a pocket for totally unobstructed views.

The Kirbé vertical drapery system features a number of innovations that make rolling pleated fabric in a window treatment possible.

Header mechanism

Reliably and delicately smooths and pleats fabric as it is taken into and let out of the mechanism

Perma-pleat bottom bar™

Weights fabric and maintains a smooth and even pleat to keep drape uniform



Header mechanism



Perma-pleat bottom bar

Roman shades with CERUS® safety technology



Lutron® has revolutionized the design of Roman shades

Lutron has revolutionized the design of Roman shades by introducing CERUS®— Cord-Eliminating Roman Uptake System. This innovation allows for safer Roman shades by eliminating lifting cords typically associated with their construction, while adding aesthetic benefits as well.

Winner of two 2010 Window Covering Manufacturers Association Awards:



Judges' Award



Best Technical Innovation
- Roman, Roller, and
Pleated Shades

Roman shades with CERUS® safety technology

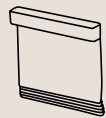


CERUS bands are color coordinated to virtually disappear against Roman shade linings when viewed from outside a home.

Style

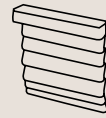
Roman shades are popular window treatments that offer an elegant use of soft fabrics to not only control light, but to add a decorative element to a home.

Four styles allow for a customized look.



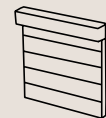
Flat

A simple, flat structure with no seams or horizontal stitching. Best showcases a fabric with pattern.



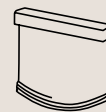
Hobbled

A tailored, cascaded design with a waterfall effect. Adds softness to a space and showcases how light plays off the cascade of fabric.



Knife

A clean, modern, flat style with distinct horizontal seams. Structured look lends itself to formal spaces or contemporary settings.



Casual

A softer, unstructured shade. Looks best with light-colored fabrics with little or no pattern.

Depending on fabric and style, Roman shades can have a wide range of looks and applications. They can have a formal appearance for a dining or living room or they may take on a casual look in kitchens and bedrooms.

Lutron® innovation

About CERUS® safety technology.

Eliminating cords from the traditional construction of Roman shades has four major advantages.

Reliable

With the elimination of cords, the Roman shade will never become tangled, ensuring the shade will work perfectly every time.

Improved performance

CERUS also allows for a smoother, more even travel of the shade, since a cord is not stacking and slipping as it rolls. Additionally, Lutron electronic drive units for Roman shades have upgraded software for enhanced precision movement.

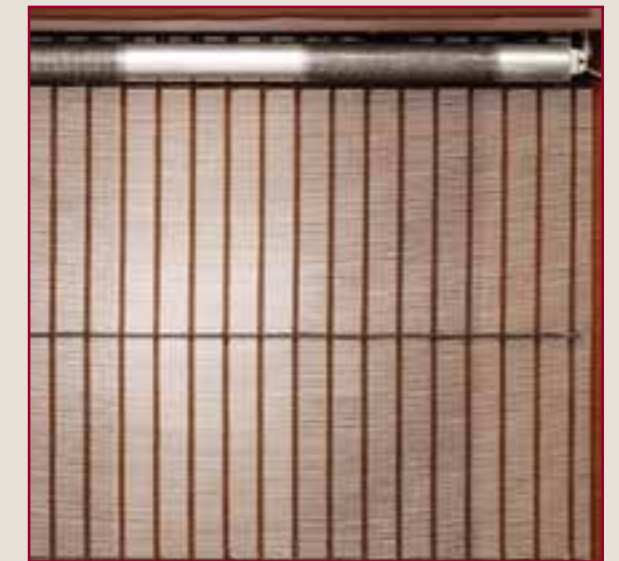
Quieter

Lifting cords slip and stack as the shade rolls, creating a noticeable noise that can be amplified if the cords become entangled. By replacing these cords with CERUS bands, these issues are eliminated, allowing your near-silent electronic drive unit (38 dBA at 3 ft.) to maintain quiet operation as to not disrupt a space.

Safer

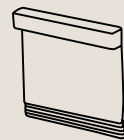
CERUS safety technology allows for a safer Roman shade system by utilizing uptake bands in place of exposed inner cords. Inner cords may pose a strangulation hazard to small children.

Roman shades with CERUS® safety technology



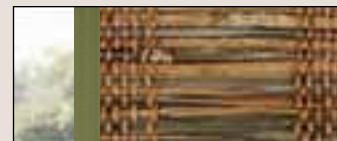
Style

Woven wood Roman shades can look casual for an informal setting or can equally suit a sophisticated, contemporary space.



Flat

Flat style is offered, and allows for an appreciation of these intricate materials.



Edge binding

Edge binding is an option that involves wrapping the ends of a woven wood shade with twill or fabric. This option protects the ends of delicate grasses and reeds from fraying and adds a decorative flair. Select which edges of the shade to be covered and in which hue and thickness (1.25 in. or 3 in.)

Options:

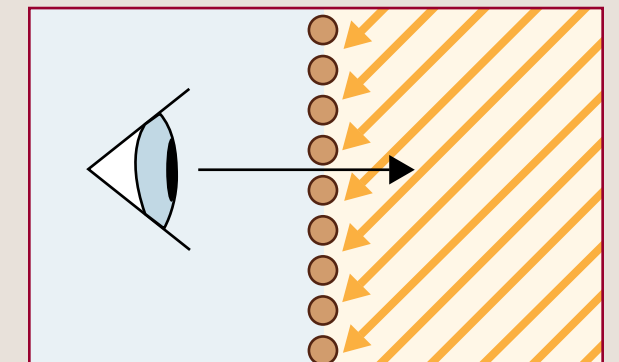


Flat Roman shade in Cheras - Walnut woven wood shown above

Lutron® innovation

CERUS® safety technology is standard for all Lutron Roman shades – soft fabric and woven wood construction.

CERUS bands are light-permeable and have been paired to each woven wood and lining to minimize disruption of light through the material.



Many woven woods permit views to the exterior, but function to shade an interior from solar heat and light. This is an intriguing optical effect similar to polarizing light.

Complete drapery systems



Lutron® now offers finished drapery panels for use on our electronically controlled drapery track

Lutron drapery systems are perfect for bedrooms. Use a dual drapery system — sheers provide light with privacy, and draperies darken a room for a good night's sleep.

Drapery systems also make a home more energy efficient by providing added insulation around windows when closed.

Specifying a drapery solution just got easier now that all components are available from Lutron — your single source for style and technology.



Lutron® finished draperies



Manual open carrier

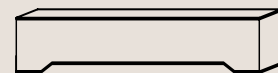
Style



Pinch pleat is named for the pleated look created by pinched gatherings of fabric at the top of the drapery. Pins on the back of the drapery are simply looped through the carriers on the track when installed.



Ripplefold pleat style is named for the soft, consistent ripples created by the drapery as it hangs from the track. It offers an elegant, contemporary look.



The finishing touch:

Top with a Lutron cornice (page 26) to easily finish the look without the need for a recessed pocket.

Lutron® innovation

Lutron drapery track systems feature a number of innovations:

Manual open carrier

The Lutron patented spring release system is field-adjustable to customize the force necessary to manually open a drapery. This provides access to the outside in the event of a power loss.

Self-aligning splice bar

Precision engineering aligns tracks within 1/16 inch tolerance. This allows for easier shipment of long drapery tracks in sections that are then assembled on the job site.

Custom curved track

Standard arcs as well as custom bends – up to 90° curves possible with a minimum bend radius of 20 inches.

Please refer to Lutron drapery catalog for a complete listing of features and system capacities: P/N 367-1527.



Self-aligning splice bar



Custom curved track

Lutron® cornices



Lutron® offers top treatments to easily finish a shading solution

Cornices may be used on the Kirbé® vertical drapery system, traditional drapery systems, as well as Lutron roller shades. They afford flexibility as they permit outside mounts for shading systems with no need for construction of pockets.

Clean lines of a straight cornice lend themselves to a contemporary or transitional space. Select a shaped cornice for traditional décor.



Straight cornice



Shape C



Shape A



Shape D



Shape B

The Avant Collection™ fabrics

Style made easy – Innovation made beautiful

The Avant Collection includes a line of sheers, soft fabrics, and woven woods to finish your Lutron® shading system.

This new selection offers a mixture of contemporary and traditional fashions, and can be used to construct your Roman shade, Kirbé® vertical drapery, cornice or traditional drapery.

Sheers	Traditional drapery
	Kirbé vertical drapery system*
Soft fabrics*	Traditional drapery
	Roman shades with CERUS® safety technology
	Cornices
Woven woods	Roman shades with CERUS safety technology

* Exception: Tendril - Can be used with the Kirbé vertical drapery system; Cannot be used with Roman shades

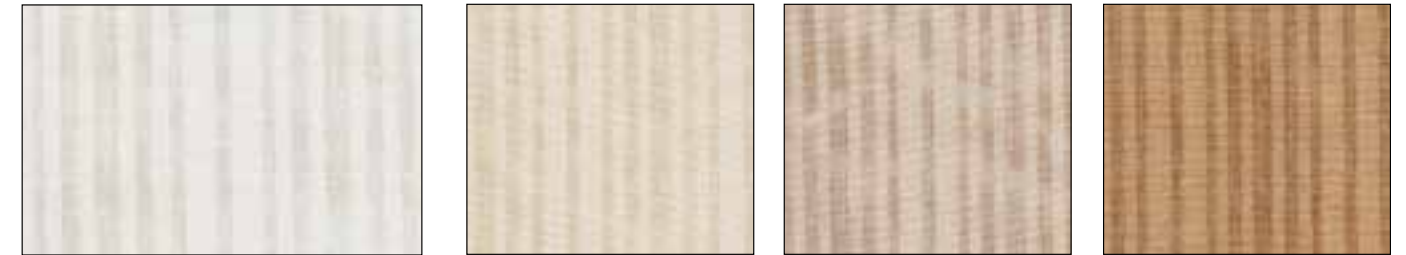
- **Custom printing** - Available for unlimited design possibilities. For more information, see page 47.
- **COM (customer's own material)** - May be used to create Roman shades, drapery panels and cornices. Contact Customer Service for more information on submitting COM for testing and approval.
- **Part numbers** - Include color code **(XX)** to specify fabric color.
- **Roman shade styles** - Some fabrics are better suited to a particular style of Roman shade and will be indicated when such an instance occurs on the following pages.

Please note that due to the printing process, the color of fabric and wood swatches may not be exact. When selecting fabrics, please request a fabric or woven wood sample from Customer Service at 1.888.LUTRON1, or refer to the Avant Collection binder, P/N AVANT-BINDER.

sheers

- Traditional drapery
- Kirbé® vertical drapery system

Dalton



Available colors: Sand (SD), Parchment (PM), Linen (LN), Jute (JT)
 Part number: DALTON-**XX**
 Width: 118 in. (2997 mm)
 Fire retardancy: yes
 Composition: 100% Polyester

New Batiste



Available colors: Snow (SW), Bone (BN), Antique White (AW), Malt (MT), Cedar (CD)
 Part number: NEWBAT-**XX**
 Width: 118 in. (2997 mm)
 Fire retardancy: yes
 Composition: 100% Polyester

sheers

- Traditional drapery
- Kirbé® vertical drapery system

Touch



Available colors: Dusk (DK), Seafoam (SF)
Part number: TOUCH-**XX**
Width: 106 in. (2692 mm)
Fire retardancy: no
Composition: 100% Polyester

fabrics

- Traditional drapery
- Roman shades with CERUS® safety technology
- Cornices

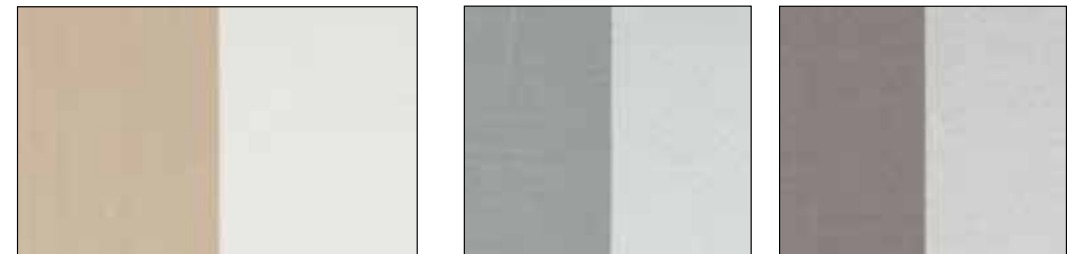
Acaulis



Available colors: Cream (CR), Latte (LT), Icewinkle (IC), Olive (OL)
Part number: ACAULIS-**XX**
Width: 54 in. (1372 mm)
Fire retardancy: no
Composition: 99% Polyester, 1% Lurex

Recommended Roman shade styles: Flat, Casual

Aveeno

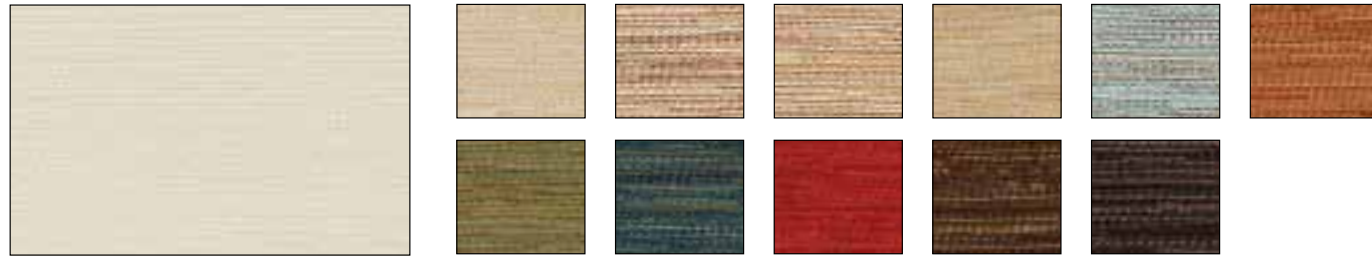


Available colors: Cream (CR), Seaspray (SS), Silver (SL)
Part number: AVEENO-**XX**
Width: 56 in. (1422 mm)
Fire retardancy: no
Composition: 100% Polyester

fabrics

- Traditional drapery
- Roman shades with CERUS® safety technology
- Cornices

Bangkok



Available colors: Ivory (IV), Sand (SD), Toffee (TF), Golden (GD), Latte (LT), Spa (SP), Harvest (HT), Basil (BL), Teal (TL), Paprika (PK), Coffee (CF), Java (JV)
 Part number: BANGKOK-**XX**
 Width: 54 in. (1372 mm)
 Fire retardancy: yes
 Composition: 100% Polyester

Cana



Available colors: Golden (GN), Moss (MS), Cordovan (CD), Black (BK)
 Part number: CANA-**XX**
 Width: 54 in. (1372 mm)
 Fire retardancy: no
 Composition: 65% Polyester, 35% Cotton

Bangle



Available colors: Sand (SD), Ocean (OC), Sage (SG), Bluebeige (BB), Old Gold (OG), Chocolate (CH)
 Part number: BANGLE-**XX**
 Width: 57.75 in. (1467 mm)
 Fire retardancy: no
 Composition: 55% Polyester, 45% Nylon

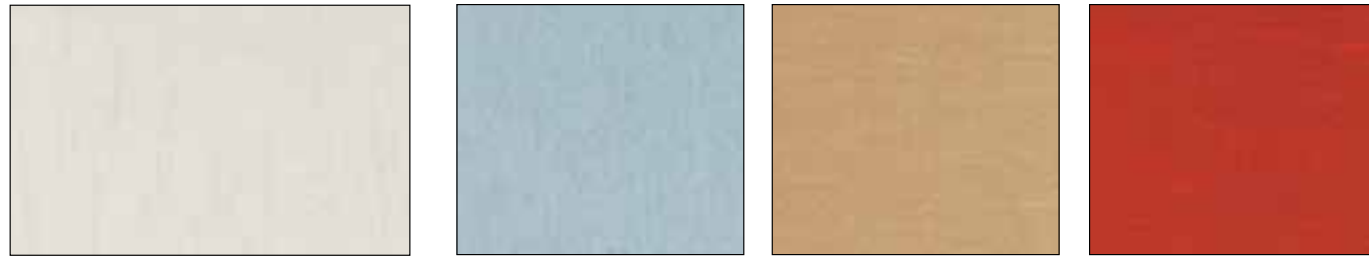
Chateau



Available colors: Copper (CP), Gold (GD), Merlot (MT)
 Part number: CHATEAU-**XX**
 Width: 57.5 in. (1461 mm)
 Fire retardancy: no
 Composition: 100% Polyester

- Traditional drapery
- Roman shades with CERUS® safety technology
- Cornices

Chic



Available colors: Cameo (CM), Azure (AZ), Sand (SD), Paprika (PK)
 Part number: CHIC-XX
 Width: 54 in. (1372 mm)
 Fire retardancy: yes
 Composition: 100% Polyester

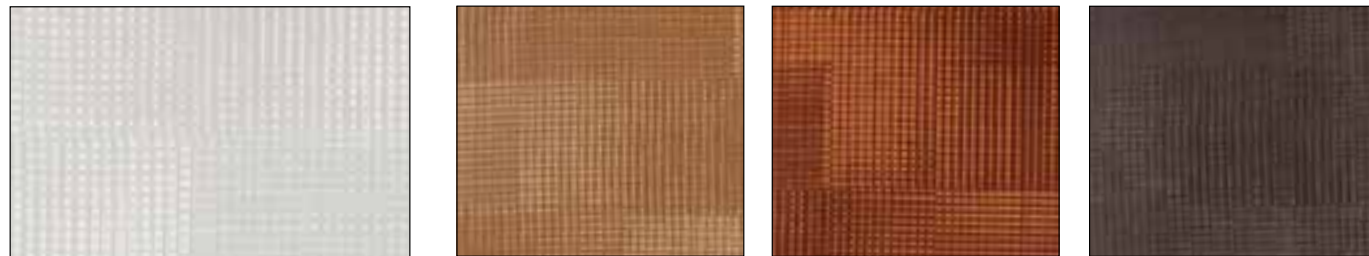
Recommended Roman shade styles: Flat, Casual

Eris



Available colors: Ice (IC), Nutria (NT)
 Part number: ERIS-XX
 Width: 54 in. (1372 mm)
 Fire retardancy: no
 Composition: 100% Silk

Demeter



Available colors: Ivory (IV), Glow (GL), Copper (CP), Granite (GT)
 Part number: DEMETER-XX
 Width: 58 in. (1473 mm)
 Fire retardancy: no
 Composition: 50% Polyester, 50% Acrylic

Recommended Roman shade styles: Flat, Casual

Fausta



Available colors: Water Blue (WB), Green Tea (GT), Garnet (GN), Oak (OK)
 Part number: FAUSTA-XX
 Width: 54 in. (1372 mm)
 Fire retardancy: no
 Composition: 55% Linen, 45% Rayon

- Traditional drapery
- Roman shades with CERUS® safety technology
- Cornices

Hermes



Available colors: Brick
 Part number: HERMES-BK
 Width: 54 in. (1372 mm)
 Fire retardancy: no
 Composition: 100% Silk

Honduras



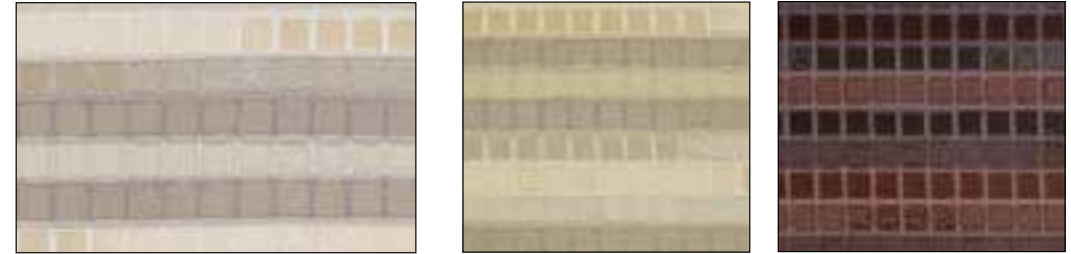
Available colors: Camilla (CM), Opal (OP)
 Part number: HONDU-XX
 Width: 55 in. (1397 mm)
 Fire retardancy: no
 Composition: 100% Polyester with 100% Rayon embroidery

Jameson



Available colors: Glow (GW), Kiwi (KI)
 Part number: JAMESON-XX
 Width: 54 in. (1372 mm)
 Fire retardancy: yes
 Composition: 100% Polyester

Nevis



Available colors: Gray Cloud (GC), Limeaid (LA), Aubergine (AE)
 Part number: NEVIS-XX
 Width: 54 in. (1372 mm)
 Fire retardancy: no
 Composition: 100% Polyester

Recommended Roman shade styles: Flat, Casual

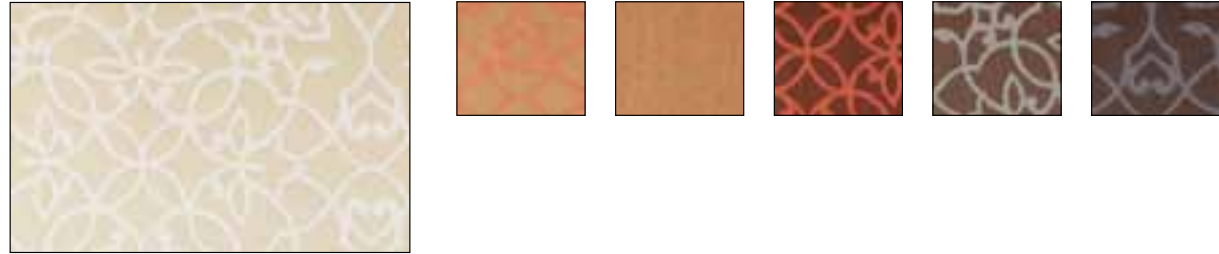
Paddock Shawl



Available colors: Misty Sage (MS), Crimson (CR), Spa (SP)
 Part number: PADDOCK-XX
 Width: 54 in. (1372 mm)
 Fire retardancy: no
 Composition: 100% Cotton

- Traditional drapery
- Roman shades with CERUS® safety technology
- Cornices

Ragen



Available colors: Cream (CR), Autumn (AT), Gingerroot (GR), Cinnamon (CN), Taupe (TP), Granite (GT)
 Part number: RAGEN-**XX**
 Width: 60 in. (1524 mm)
 Fire retardancy: no
 Composition: 100% Polyester

Recommended Roman shade styles: Flat, Knife Pleat, Hobbled

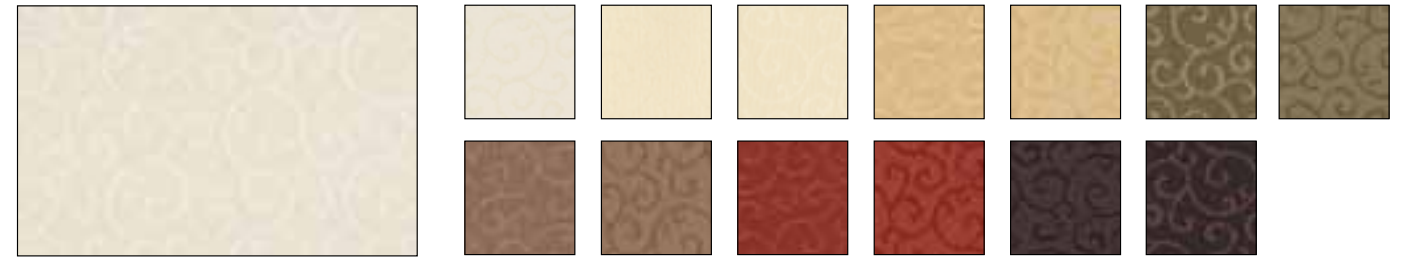
Suspicion



Available colors: Artic (AR), Cockateel (CT), Malt (MT), Sandstone (ST), Cassis (CS), Americana (AM), Pimento (PM), Mediterranean (MN), Ultraviolet (UV)
 Part number: SUSPIC-**XX**
 Width: 58 in. (1473 mm)
 Fire retardancy: yes
 Composition: 100% Polyester

Recommended Roman shade styles: Flat, Casual

NEW Tendril



Available colors: Lily (LLY), Lotus (LOTUS), Primrose (PRMRSE), Daisy (DAISY), Buttercup (BTTCP), Goldenrod (GDNROD), Moss (MOSS), Lichen (LICHEN), Bamboo (BMBOO), Mushroom (MSHRM), Amaryllis (AMRYLS), Tigerlilly (TGRLLY), Dahlia (DAHLIA), Bark (BARK)
 Part number: TND-**X**
 Width: 118 in. (2997 mm)
 Fire retardancy: yes
 Composition: 100% Polyester

Note: Tendril can be used with Kirbé™ vertical drapery system; cannot be used with Roman shades

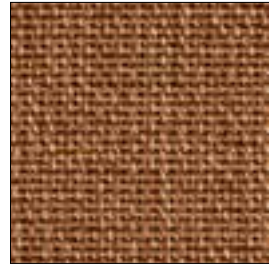
Torrey Pines



Available colors: Glow (GL), Wild Plum (WP)
 Part number: TORREY-**XX**
 Width: 54 in. (1372 mm)
 Fire retardancy: no
 Composition: 60% Cotton, 40% Polyester



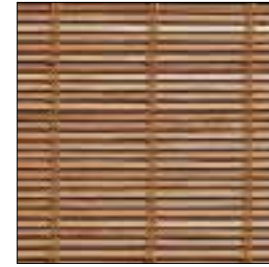
Angel River - Honeydew
 ANGRVR-HD
 CERUS band: Almond
 Width: 96 in. (2438 mm)



Aris - Ginger
 ARIS-GN
 CERUS band: Gold
 Width: 96 in. (2438 mm)



Bacopa - Camel
 BACOPA-CM
 CERUS band: Gold
 Width: 96 in. (2438 mm)



Batang - Oak
 BATANG-OK
 CERUS band: Gold
 Width: 96 in. (2438 mm)



Hanoi - Camel
 HANOI-CL
 CERUS band: Gold
 Width: 96 in. (2438 mm)



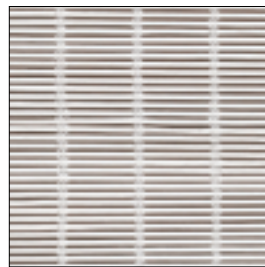
Hunan - Hemp
 HUNAN-HH
 CERUS band: Gold
 Width: 96 in. (2438 mm)



Jambu - Adobe
 JAMBU-AB
 CERUS band: Brown
 Width: 96 in. (2438 mm)



Jambu - Smoke
 JAMBU-SK
 CERUS band: Brown
 Width: 96 in. (2438 mm)



Batang - White
 BATANG-WH
 CERUS band: White
 Width: 96 in. (2438 mm)



Beijing - Dusk
 BEIJING-DK
 CERUS band: Gold
 Width: 96 in. (2438 mm)



Bengali - Grass
 BENGALI-GR
 CERUS band: Brown
 Width: 72 in. (1829 mm)



Cheras - Walnut
 CHERAS-WT
 CERUS band: Black
 Width: 96 in. (2438 mm)



Jilin - Camel
 JILIN-CM
 CERUS band: Almond
 Width: 96 in. (2438 mm)



Jilin - Natural
 JILIN-NT
 CERUS band: Almond
 Width: 96 in. (2438 mm)



Juba - Berber
 JUBA-BR
 CERUS band: Gold
 Width: 96 in. (2438 mm)



Kaede - Mist
 KAEDE-MT
 CERUS band: Black
 Width: 96 in. (2438 mm)



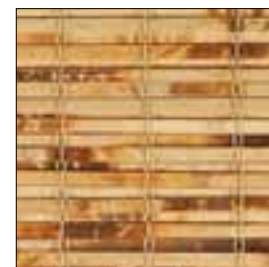
Dynasty - Teak
 DYNASTY-TK
 CERUS band: Brown
 Width: 120 in. (3048 mm)



Dynasty - Walnut
 DYNASTY-WT
 CERUS band: Black
 Width: 120 in. (3048 mm)



Gentle Orchid - Coral
 GNTORC-CL
 CERUS band: Gold
 Width: 96 in. (2438 mm)



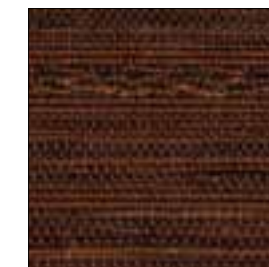
Ha Tien - Bamboo
 HATIEN-BM
 CERUS band: Almond
 Width: 96 in. (2438 mm)



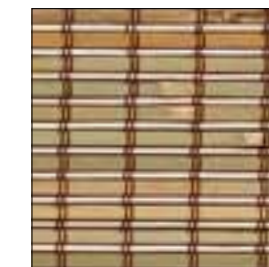
Madras - Jute
 MADRAS-JT
 CERUS band: Gold
 Width: 96 in. (2438 mm)



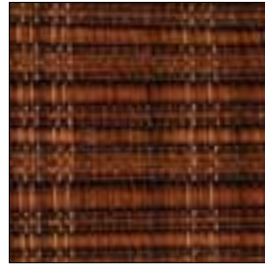
Madras - Oak
 MADRAS-OK
 CERUS band: Gold
 Width: 96 in. (2438 mm)



Mohave - Umber
 MOHAVE-UM
 CERUS band: Gold
 Width: 96 in. (2438 mm)



Nepal - Tropic
 NEPAL-TM
 CERUS band: Gold
 Width: 96 in. (2438 mm)



Rucca - Umber
RUCCA-UM
CERUS band: Brown
Width: 96 in. (2438 mm)



Sapporo - Malt
SAPPORO-MM
CERUS band: Gold
Width: 96 in. (2438 mm)



Sapporo - Natural
SAPPORO-NT
CERUS band: Almond
Width: 96 in. (2438 mm)



Sapporo - White
SAPPORO-WH
CERUS band: White
Width: 96 in. (2438 mm)



Taishan - Mocha
TAISHAN-MC
CERUS band: Gold
Width: 96 in. (2438 mm)



Waja - Ebony
WAJA-EB
CERUS band: Brown
Width: 96 in. (2438 mm)



Waja - Malt
WAJA-MT
CERUS band: Almond
Width: 96 in. (2438 mm)



Waja - Walnut
WAJA-WT
CERUS band: Brown
Width: 96 in. (2438 mm)



Sasarido - Ebony
SASAR-EB
CERUS band: Brown
Width: 96 in. (2438 mm)



Sasarido - Umber
SASAR-UM
CERUS band: Brown
Width: 96 in. (2438 mm)



Satria - Ebony
SATRIA-UM
CERUS band: Black
Width: 96 in. (2438 mm)



Satria - Walnut
SATRIA-WT
CERUS band: Brown
Width: 96 in. (2438 mm)



Zhen - Jute
ZHEN-JT
CERUS band: Gold
Width: 96 in. (2438 mm)



Sibü - Natural
SIBU-NT
CERUS band: Almond
Width: 82 in. (2083 mm)



Steffe - Sea
STEFFE-SE
CERUS band: Gold
Width: 96 in. (2438 mm)



Sumo - Woodland
SUMO-WL
CERUS band: Brown
Width: 96 in. (2438 mm)



Taipei - Straw
TAIPEI-ST
CERUS band: Almond
Width: 96 in. (2438 mm)

Please note that availability of all materials shown is subject to change at any time. For the most current information, please refer to the SCT or contact Customer Service at 1.888.LUTRON1.

edge binding

Roman shades with CERUS® safety technology

Twill binding



Khaki
Actual size*
(1.25 in. wide)



Fabric binding



Seafoam
Actual size*
(1.25 in. wide)

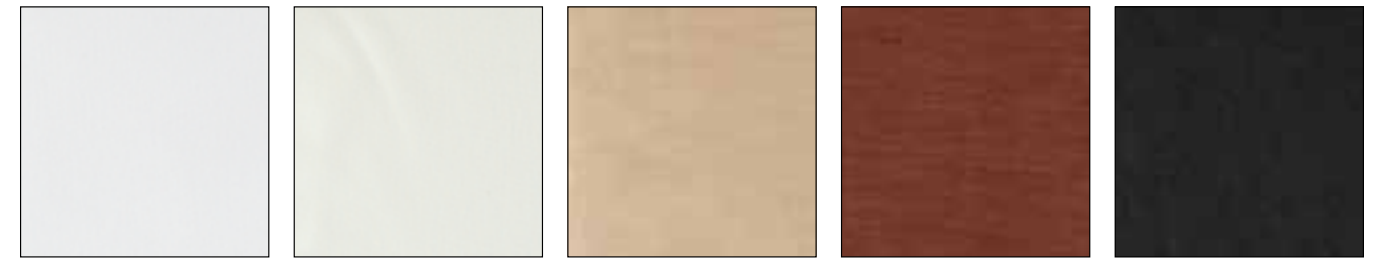


* 0.625 in. of binding will be visible on front and back of shade.
3 in. binding option is also available; 1.5 in. of binding will be visible on each side.

linings

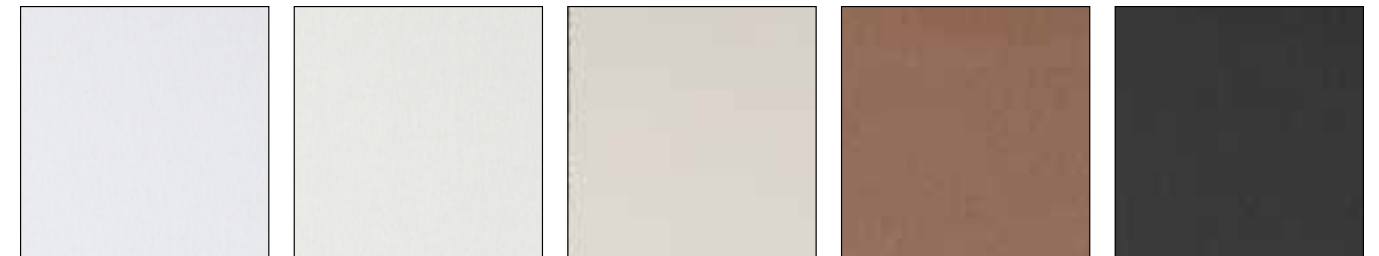
Roman shades with CERUS® safety technology

Light filtering lining



White Ivory Linen Chocolate Black

Opaque lining

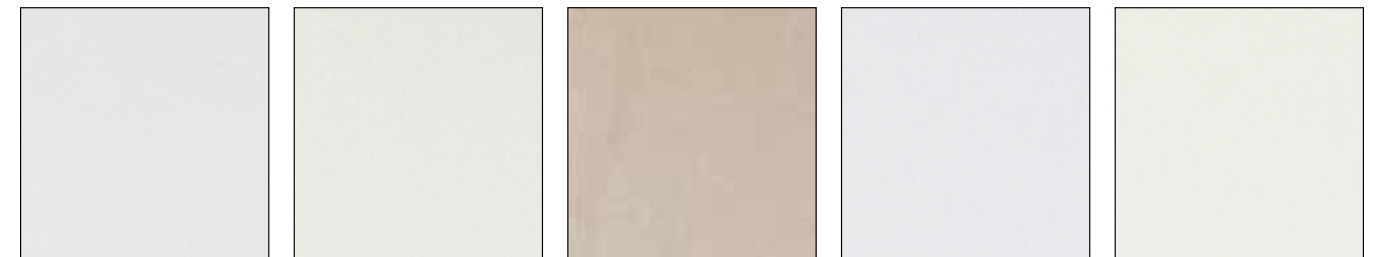


White Ivory Natural Coffee Duotone Black Duotone

linings

Traditional drapery

Light filtering lining



Classic Napped - White Classic Napped - Ivory Classic Napped - Khaki Chateau Sateen - White Chateau Sateen - Ivory

Opaque lining



Outblack Lining - White Outblack Lining - Ivory

Avant Collection™ notes

The following details can aid in ordering and installing The Avant Collection window treatments.

Privacy

Please note that some materials have open weaves. Although they may block outside views during the day, at night they may not provide sufficient privacy. To achieve privacy for the Kirbe® vertical drapery system, pair with the optional roller shade feature. For woven wood Roman shades, use a fabric lining.

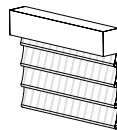
Roman shades

Soft fabric Romans **must** be lined. Woven wood Roman shades do not require lining.

Railroading

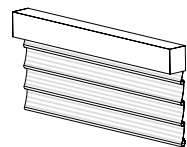
Railroading fabric is an option for applications that require shades wider than the usable roll width in order to avoid vertical seams. Railroading rotates fabric 90 degrees from its typical orientation. Please note: If the fabric has a distinct pattern, this pattern will be rotated 90 degrees, thereby altering the final appearance of the shade.

Standard fabric orientation



For applications within the usable roll width

Railroaded fabric orientation



For applications wider than the usable roll width

Natural materials

The following are inherent characteristics to be aware of when ordering natural materials.



Woven wood Roman shades are fabricated from genuine reeds, grasses, palm leaves, bamboo, and woods. As a result, the final appearance of your shade is left to nature. Discrepancies between shades may occur, especially in wood grain, texture, pattern, and color. Natural woven materials can have a slight bow or camber, causing horizontal lines or bottom hems to be skewed. Woven woods may also exude a scent of grass, especially after being tightly enclosed during shipping, but the scent will dissipate with time.



Lutron Venetian blinds are 100% genuine hardwoods. As a result, your Venetian blind will exhibit grain textures, pin knots, mineral deposits, and burl figures, all elements of the tree and environment it came from, causing variations from slat to slat. Wood fibers inherently absorb moisture as the environment changes, which may result in slight warping over time.

Consolidating orders

Fabric and woven wood samples aid in material selection. However, fabric runs and woven wood dye lots are subject to subtle variation. Paint colors and the yarn used to weave woven woods together may also exhibit color variation. To ensure the best possible color match, all shades destined for the same space should be placed on the same order.

Some variation may still occur within the same order with woven woods since some of these materials are not color processed. Bamboo may appear green at the time of installation, but with time, will age to a beige-brown hue.

Fabric relaxation

Soft fabrics have not experienced gravity. They have been stored on a roll until made into a drapery or Roman shade. It is natural for fabrics to “relax” and sometimes lengthen over time. When measuring for drapery length, please allow proper clearances for sills and floors. Lining drapery adds structure and can minimize relaxation.

Woven woods are a natural – and sometimes heavy – shading material. These materials may relax over time as well. However, edge binding restricts the natural stretching of woven wood shades. This may result in a bowed center, causing a “smile” at the bottom of the shade, or a pucker just above the bottom batten. The larger the shade, the more pronounced this effect tends to be.

Horizontal patterns

Several woven wood selections display a distinct horizontal pattern. Due to variations in the shade material and weaving process, these patterns may not match perfectly across adjacent shades.

NEW Custom printing

Give window treatments a signature look with custom printing — available for Kirbé® vertical drapery systems, drapery panels, and cornices. Take advantage of the exciting possibilities by submitting a fabric design, or simply specify a color to be applied onto a smooth privacy fabric.

When submitting a fabric design, Shading Quotes requires a .TIF file of the pattern that should be 100 PPI or higher. To ensure the accuracy of your design, feel free to provide the desired pantone colors.

To submit, simply create a standard quotation for the shading solution in the Shade Configuration Tool, and then send image files to Lutron Shading Quotes at shadingquotes@lutron.com.

Custom printing is also available for roller and tensioned shades. For more information, contact Shading Quotes at 1.888.LUTRON1.

Fabric before custom printing



After

Steaming Fabrics

Test fabric for color fastness in an inconspicuous spot. Heavier fabrics may require repeated steaming. Steaming is not recommended for fabrics with embroidery or injected yarns because the material may shrink and pucker around the embroidery.

Wrinkle Remover Spray

Wrinkle remover spray is permissible on the following fabrics: Cana, Jameson, Paddock Shawl, Torrey Pines, and Touch. Test fabric in an inconspicuous spot. Using wrinkle remover spray on other fabrics can adversely affect the appearance of the shade.

General fabric care notes

- **Acrylic** is a lightweight fiber that produces hypoallergenic and quick-drying fabrics. Acrylic can take only low heat.
- **Cotton** is a plant fiber with short fibers. It can take high temperatures, which permits steaming and ironing at a high setting. Blends of cotton and polyester have permanent press properties and extended wear resistance.
- **Linen** is a plant fiber (flax) with long fibers and is 2 or 3 times stronger than cotton. Due to poor elasticity, linen fabrics do not spring back and constant creasing in the same place can break threads. Wrinkles may not always come out.
- **Linen/cotton blends** may use light iron, light steam, or wrinkle-out spray.
- **Nylon** is elastic and resilient, but sensitive to heat - iron at a low setting on the fabric's reverse side.

- **Polyester** is a fiber made from coal and petroleum products. It is resistant to creases but melts at medium to high temperatures.
- **Rayon** is a cellulose (wood) fiber and has many of the same qualities as cotton. Rayon is strong, extremely absorbent, comes in a variety of qualities and weights, and can be made to resemble natural fabrics. Rayon does not melt, but can burn at high temperatures.
- **Silk** is a protein fiber (silkworm). Press cloths and a steam iron are recommended because silk may yellow or fade with the use of a high iron setting. Silk can also be weakened by direct sunlight exposure.

For more information, visit www.lutron.com/fabrics

The Avant Collection™ binder

P/N AVANT-BINDER

The Avant Collection of soft fabrics, woven woods, sheers, and linings are showcased in this fabric binder. Soft fabrics are separated by color group, sheers and linings to simplify the selection process. Each selection indicates which style of window treatment can work with each material. All samples are easily removable and include key material information.

Additional material samples

Larger material samples are available for order to assist with the final process.

Woven woods = 30 in. x 30 in.

Soft fabrics = roll width x 18 in.

Venetian blinds with Intelligent Tilt Alignment™

P/N VENETIAN-BINDER

The newest addition to the Avant Collection has a separate binder to aid in the selection process. The binder contains samples for all of its slat collections, valances, and decorative tapes. Samples are arranged by color and finish for ease of display while sample decks are easily removable for hands-on review. Individual decks are also available for order.

Both the Avant and Venetian binders, and larger material samples may be ordered from the SCT or by contacting Lutron Customer Service at 1.888.LUTRON1.

For additional information on any Avant Collection material, visit www.lutron.com/fabrics



Avant Collection binder with cards



Soft fabric samples



Woven wood samples



Venetian blinds with Intelligent Tilt Alignment binder with sample decks

Total light control

Integrate shades seamlessly with Lutron® lighting control systems for complete control of all the light in a space.

Single room solution: GRAFIK Eye® QS with wireless technology

The GRAFIK Eye QS is a fully customizable preset light and shade control system, providing convenient control, energy savings, and enhancement of the visual environment, now incorporating Lutron Clear Connect™ RF technology for reliable communication.

Visit www.lutron.com/grafikeyeqs



(not actual size)

Whole-home control: RadioRA® 2

RadioRA 2 is a wireless control system that provides convenient and intuitive control of lights, shades, appliances and temperature in a single room or throughout an entire home. Lutron Clear Connect RF technology provides consistently reliable communication.

This total home control system can now be controlled over a Wi-Fi network via Apple's iPad, iPhone, or iPod Touch using the new Lutron Home Control application. Please note that Sivoia QS Wireless shades must include a RadioRA 2 Main Repeater, and the system must be programmed via the RadioRA 2 software version 3.1.14 or later, available only to authorized providers.

Visit www.lutron.com/radiora2



iPad App (not actual size)

Sivoia® QS Wireless roller shades - Bali - Linen fabric
Lutron® Ivalo® Collection sconces: Aliante

Apple, iPad, iPhone, iPod touch, and iTunes Store are trademarks of Apple Inc., registered in the U.S. and other countries.



About Lutron®

Our commitment

Lutron is committed to bringing our customers best-in-class products and solutions that offer superior performance with world-class service and global support.

Light control is environmentally responsible. Lutron develops high-quality, elegant lighting solutions that reduce energy costs significantly. We innovate in advance of emerging market needs and continually streamline our quality, our delivery, and our value.

Lutron has hundreds of issued U.S. utility and design patents, and many more granted patents and design registrations in countries around the world. For almost 50 years, we have met and exceeded the highest standards of quality and service. Every one of our products is quality-tested before it leaves the factory. We are available to help, on the phone or in the field, whenever we are needed.

Unmatched support

Expert design assistance

- Product, application and system knowledge to identify the best solutions to meet project objectives
- Design assistance for the specification community with drawings and written specifications
- Quick turnaround to meet construction schedules
- Product demonstrations, samples, and installation documentation
- Global project management

Expert service

- Ongoing commitment to service and reliability
- Global field service engineers handle factory commissioning and support
- 24/7 multilingual technical phone support
- Assured performance plans include annual warranty extension, annual comprehensive preventative maintenance, and customized training

Lutron® has been the world's leading manufacturer of lighting controls and systems for almost 50 years. With the addition of shading solutions, Lutron has opened a new world of possibilities by seamlessly integrating electric and daylight control with a focus on innovation, world-class engineering, and customer service. Lutron blends technology with design and environmental sensitivity to provide the ideal solution for total light control.

www.lutron.com/shadingsolutions

Lutron Electronics Co., Inc.
7200 Suter Road
Coopersburg, PA 18036-1299

World Headquarters +1.610.282.3800
Technical Support Center 1.800.523.9466
Customer Service/Quotes 1.800.446.1503
Email: shadinginfo@lutron.com

© 05/2011 Lutron Electronics Co., Inc.
P/N 367-1678 REV D

