



**STELLAR® 3315 TECHNICAL SPECIFICATION GUIDE**

3315

Service Crane and T1-11 Service Body



*Our People. Our Products.*

# STELLAR® 3315 TECHNICAL SPECIFICATION GUIDE

## ■ SPECIFICATION INFORMATION

Crane Rating: 11,500 ft-lbs (1.59 ton-meters)  
Standard Boom Length: 7' (2.13 m) from CL of Crane

Boom Extension:  
• 1st stage: Hydraulic 48" (121.9 cm)  
• 2nd stage: Manual 48" (121.9 cm)

Max. Horizontal Reach: 15' (4.57 m) from CL of Crane

Maximum Vertical Lift: 16' 9" (5.11m)  
(from crane base)

Boom Elevation: -5 to +80 degree

Stowed Height: 32.5" (82.6 cm)  
(crane only)

Mounting Space Required: 18" x 15" (45.7 x 38.1 cm)

Shipping Weight: 800 lbs (360 kg)

Controls: Radio control standard for all functions

### Winch

- Rope Diameter: 1/4" (.64 cm)
- Line pull speed: 30 ft/min (9.1 m/min)
- Max. single part line: 1600 lbs (725 Kg)
- Max. double part line: 3200 lbs (1450 Kg)

Rotation: 370 degree power  
(worm gear)

Lifting Capacities: 1625 lbs @ 7' (737 Kg @ 2.1 m)  
750 lbs @ 15' (340 Kg @ 4.6 m)

Power Supply Required: 12 volt power unit  
2.0 gpm @ 2300 psi  
(7.57 lpm @ 159 bars)

(Also available in hydraulic versions)

## ■ DEFINING CHARACTERISTICS

### Planetary Drive Winch System

To maximize winch speed, Stellar Industries has incorporated a planetary drive winch system with line speeds up to 30-feet per minute. In addition to speed, the planetary winch also provides mechanical and hydraulic breaks for added security.

### Hexagonal Boom Design

Hexagonal booms are stronger and greatly reduce boom flex and side to side movement.

### Greaseless Bushings

Maintenance free greaseless bushings.

### Stainless Steel Pivot Pins

Lower maintenance and extend life.

### 15' of Reach

Hydraulic 1st stage extension. Manual 2nd stage extension.

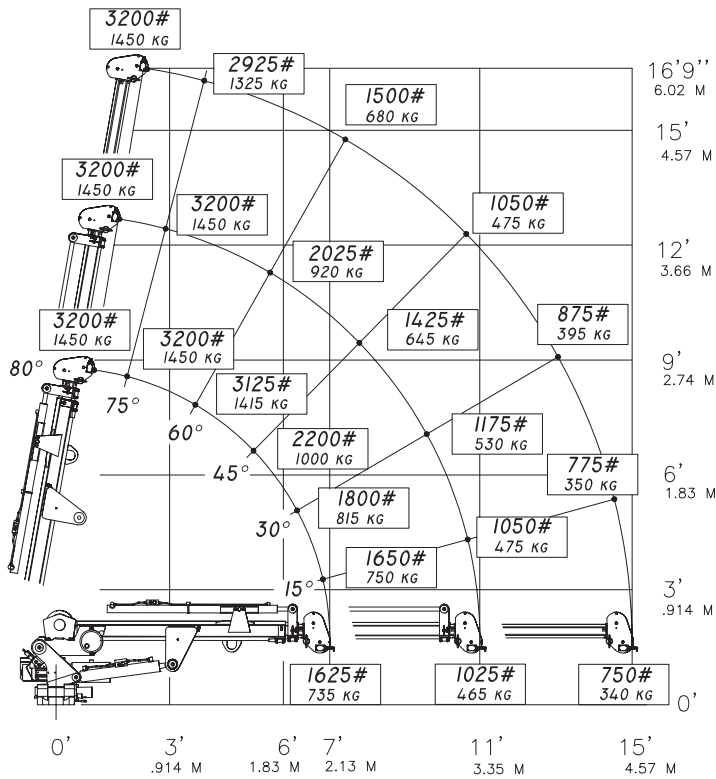
### Dual Acting Counter Balance Valves

Integrated into cylinders.

### Flip Sheave Standard

### Anti Two-Block Device

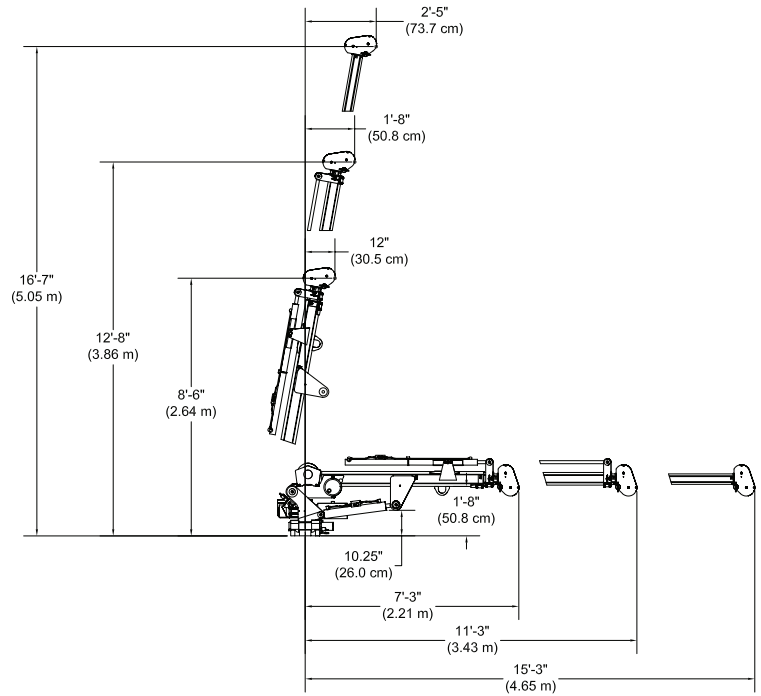
### 3315 CAPACITY CHART



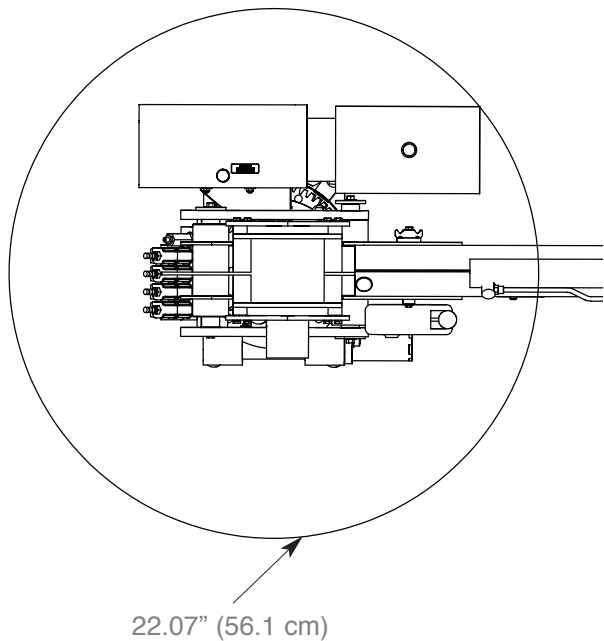
Weight of load handling devices are part of the load lifted and must be deducted from the capacity.

Maximum 1 - part line capacity is 1600 lbs. (725 kg). For greater loads, use 2 - part line.

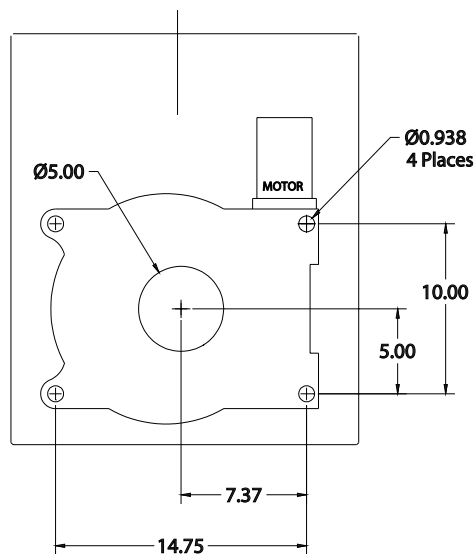
### GEOMETRIC DIMENSIONS



### ROTATIONAL CLEARANCE



### HOLE MOUNTING DETAIL



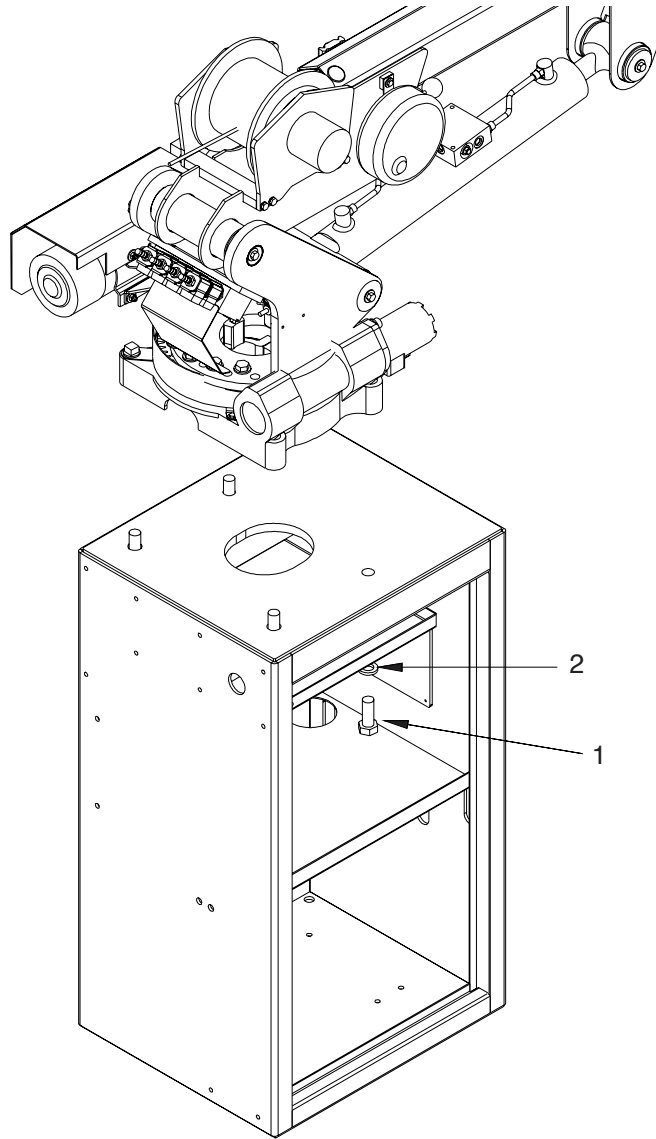
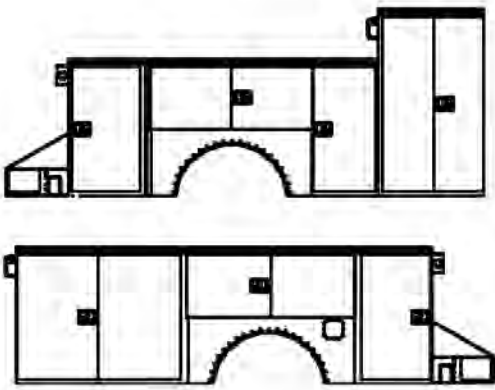
■ Service Bodies

**T1-11 Service Body**

Applicable Chassis: 16000 GVWR to  
19000 GVWR Chassis

Crane Models: 3315  
4420  
5520  
6620  
6628

Cab to Axle: 84" (213.36 cm)  
Body Length Nominal: 133" (337.82 cm)  
Body Height: 44" (111.76 cm)  
Body Width: 94" (238.76 cm)  
Compartment Depth: 22" (55.88 cm)  
Floor Width: 50" (127 cm)  
Net Weight: 3220 lbs (1460.37 kg)



Item	Part	Description	Qty.
1	17688	Cap Scr 0.88-9x2.25 HHGR8	4
2	8648	Washer 0.88 SAE GR8	4

Your local dealer:



*Our People. Our Products.*

190 State Street  
P.O. Box 169  
Garner, IA 50438  
Telephone: (641) 923-3741 • (800) 321-3741  
Fax: (641) 923-2812  
Internet: [www.stellarindustries.com](http://www.stellarindustries.com)  
Email: [sales@stellarindustries.com](mailto:sales@stellarindustries.com)

An Employee Owned Company.  
Copyright © 2008 Stellar Industries, Inc.