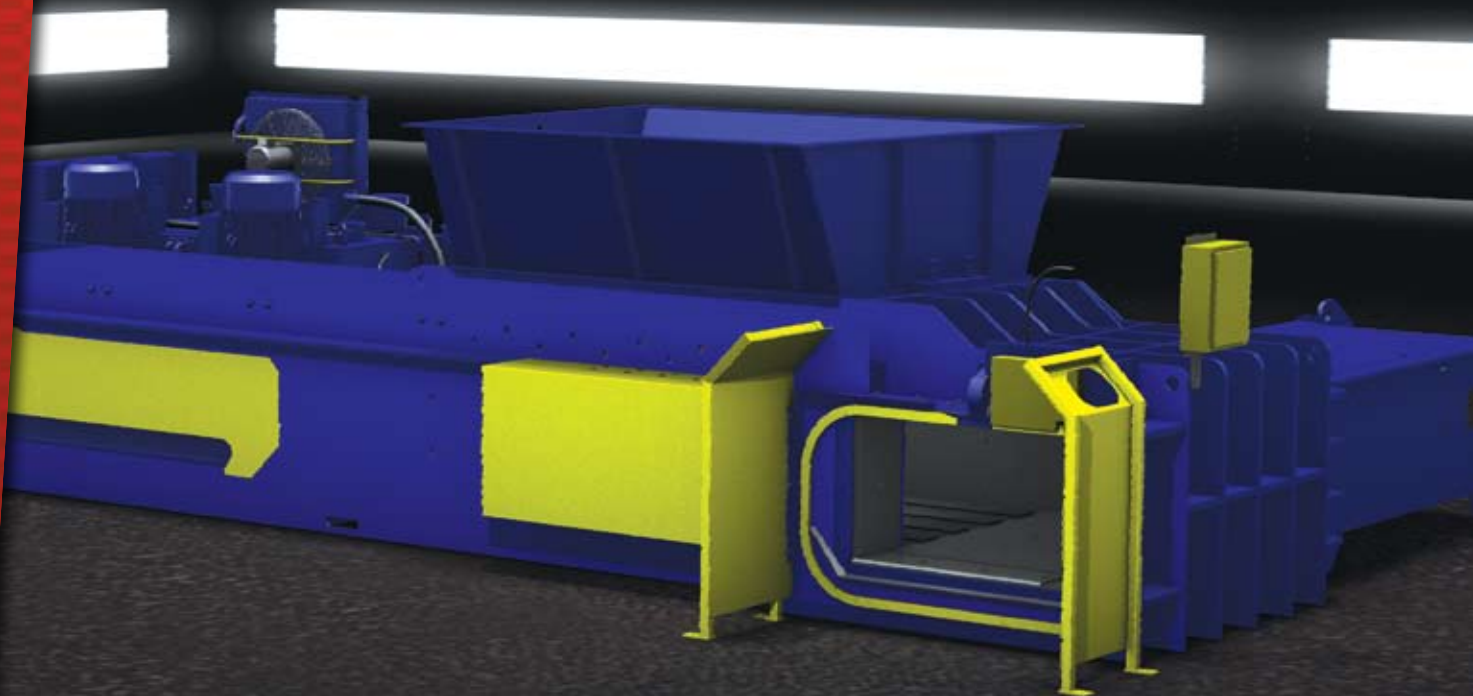




Harris[®]

**CENTURION EHD
TWO RAM BALER**



Why the HRB Centurion EHD

Power, speed, strength - this two ram baler tops its class. Harris took a bottom-up approach and designed a baler that would be faster and stronger, while being cheaper to operate and takes up less space in your facility.



Power Savings

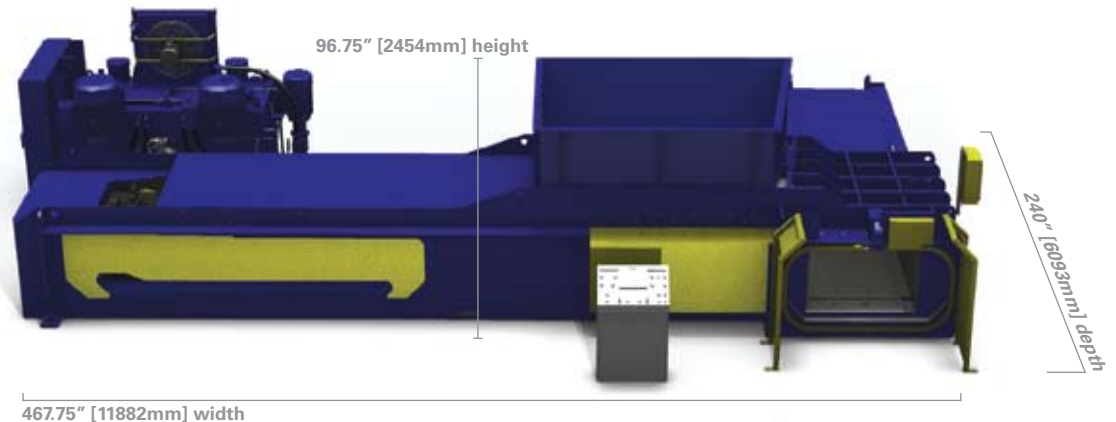
The new and improved high efficiency power unit consumes 50% less power compared to traditional 200hp two ram balers. Are you looking to lower your bottom line? Slice your machine's utility cost in half.

Environmentally Friendly



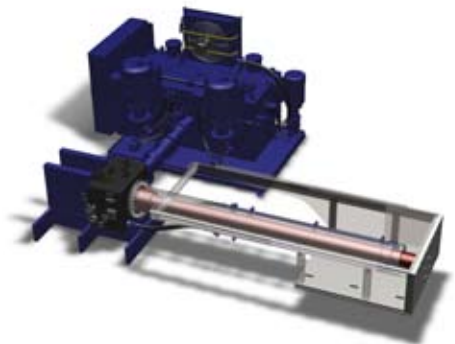
Design

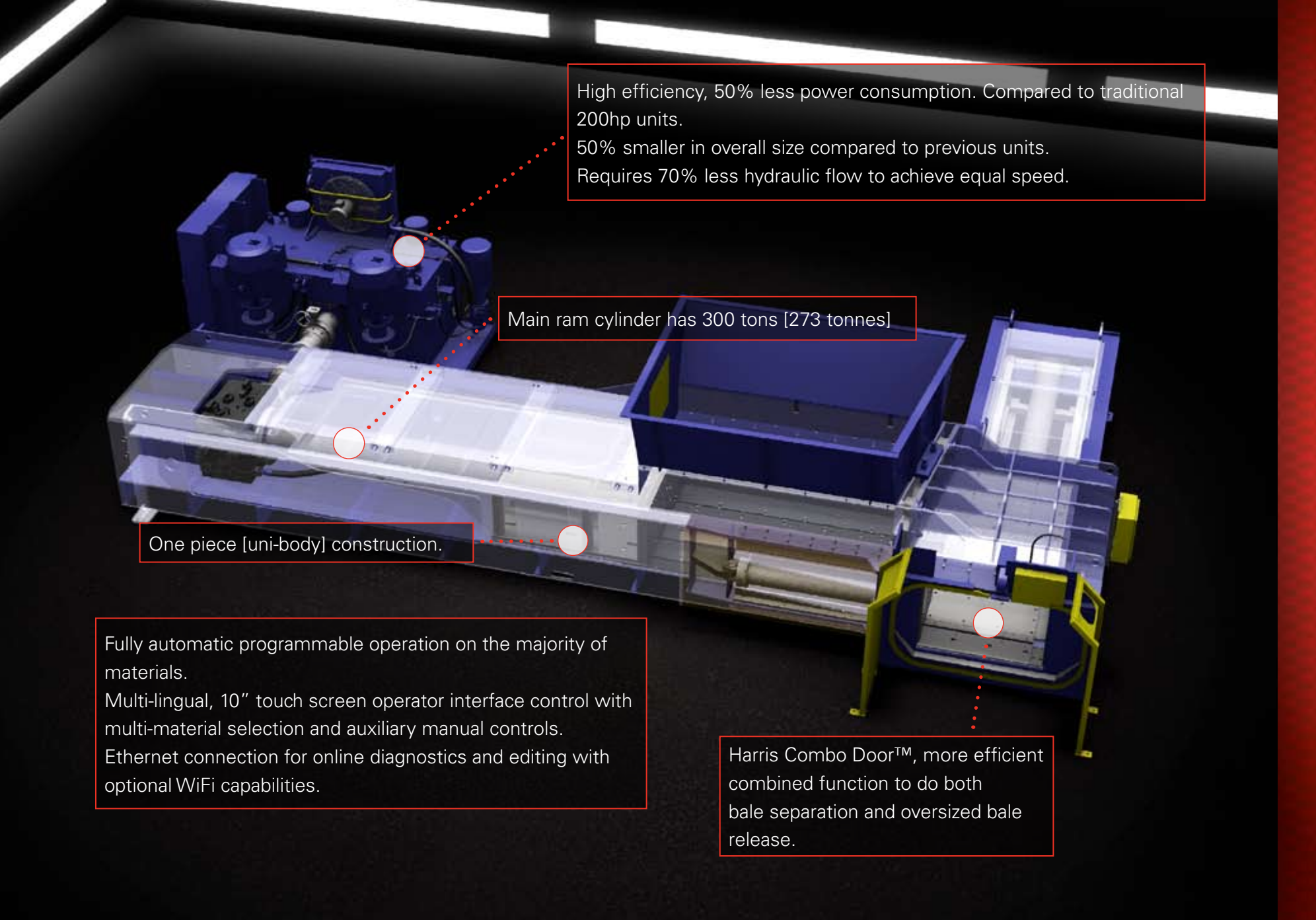
Harris focused more than ever on the end user in the design of the Centurion EHD. It is smaller, faster and stronger than traditional balers in the same category. At every step the design was engineered with longevity and strength, lower maintenance, and overall cost reduction in mind.



Hydrodynamics

Harris would like to introduce you to Efficient Hydrodynamics (EHD). Our EHD hydraulic system decreases cycle times to 8.5 seconds, 30% faster than traditional 200hp two ram balers. The system requires less fluid flow for the same results and with optional new "green" fluid you can help the environment and get 4 times the fluid life than traditional fluids.





High efficiency, 50% less power consumption. Compared to traditional 200hp units.

50% smaller in overall size compared to previous units.
Requires 70% less hydraulic flow to achieve equal speed.

Main ram cylinder has 300 tons [273 tonnes]

One piece [uni-body] construction.

Fully automatic programmable operation on the majority of materials.
Multi-lingual, 10" touch screen operator interface control with multi-material selection and auxiliary manual controls.
Ethernet connection for online diagnostics and editing with optional WiFi capabilities.

Harris Combo Door™, more efficient combined function to do both bale separation and oversized bale release.

Harris is a worldwide leader in the design, manufacture, and support of scrap processing, recycling, and waste handling equipment.



200 Clover Reach Dr.
 Peachtree City, GA 30269
 800.373.9131
 770.631.7290
 www.harrisequip.com

Harris © 2009 - CentEHD2009 -

Harris CENTURION EHD

JUST THE NUMBERS

FEATURE	Specification Information	
Horsepower	2 - 100hp (2 - 75 kW)	
Total Flow	246 GPM (931 Liters per minute)	
Dry Cycle Time	8.5 seconds	
Bale Size	45" x 30" x 63" (1143mm x 762mm x 1600mm)	
BALE DENSITY & WEIGHT	Density lb/ft ³ (kg/m ³)	Weight lbs (kg)
Bulk OCC	up to 33 (529)	1250-1700 (567-771)
Solid Waste	up to 47 (753)	1800-2700 (816-1225)
Newsprint	up to 38 (609)	1400-1900 (635-862)
Whole Aluminum Cans	up to 28 (449)	1050-1350 (467-612)
Steel Cans	up to 51 (817)	1550-2500 (703-1134)
Plastic	up to 32 (513)	1200-1900 (544-862)
Non-ferrous	up to 54 (865)	1000-2750 (454-1247)
DIMENSIONS	Specification Information	
Hopper Opening	86" x 105" (2185mm x 2667mm)	
Charge Box Opening	58.5" x 101" (1486mm x 2566mm)	
Charge Box Volume	162 CF (4.6 cubic meters)	
Estimated Weight (Inc. Power Unit)	53 Tons (48 tonnes)	

The Centurion EHD is designed to process Aluminum/tin cans, Aluminum sheeting/siding/extrusions, Copper, Wire, Some nonferrous, Select ferrous materials, Corrugated cardboard (OCC), High grade paper, Wooden pallets, Newsprint, PET, HDPE, MSW (solid waste), and White goods.

The Centurion EHD is perfect for MRFs, Transfer Stations and Recycling facilities.