



# Side Squeeze Shear

## Processes:

Steel Mill Scrap

Pipe and Plate

No. 1 Heavy Melting Scrap

No. 2 Heavy Melting Scrap

Selected sections of freight cars  
and ship scrap.

The Harris side squeeze (SS) shear with lid is designed to confine and compress heavy steel mill scrap, freight car, and ship scrap. It provides maximum productivity through continuous, efficient production while requiring only limited maintenance due to simplicity of operation.

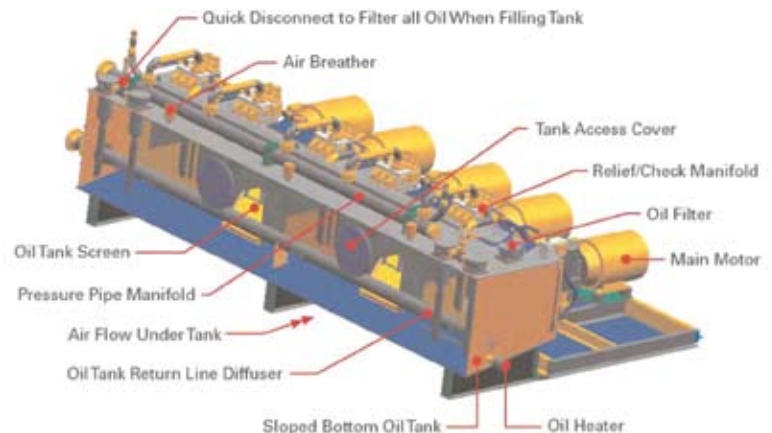
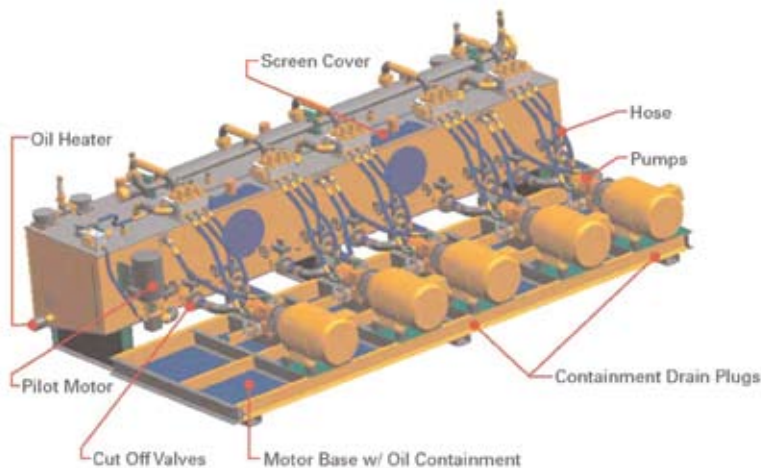


# Side Squeeze Shear



## Standard Features

- Flooded suction tanks guarantee pump priming increasing pump life and eliminates dry start-ups.
- Same brand matched pumps are used for optimum flow and pressure.
- Pumps and motors are more accessible with built in drip pan.
- Kidney loop filtration/ cooler pumps are positive displacement type for better filtration and cooling flow.
- Increased use of heavy-duty hoses reduce vibration and noise. Soft shift vents extend pump life by reducing shock and noise in the system.



Call today for more information

770-631-7290

800-373-9131

[www.harrisequip.com](http://www.harrisequip.com)

\*All products and features are subject to change. Photos not necessarily representative of new equipment



Harris © 2010 - SSShear10 -