

## Moditech Rescue Solutions BV

With more than 10 years experience with data-acquisition and software development for the collision repair industry, Moditech Rescue Solutions BV has developed a specialty in design and implementation of mobile information systems for rescue workers. The company owns a large database containing technical information for passenger cars, vans and trucks. Due to close relationships with car manufacturers on international level, Moditech continually maintains and keeps this valuable source of information up to date: data for a new model often is available before the official market release! Translation of the database with technical information into a practical solution for rescue workers was a logic step that led to the development of the new Crash Recovery System<sup>®</sup>, a mobile vehicle information system that enables the rescue worker to work quicker and safer during extrication of victims from crashed vehicles.



First Name \_\_\_\_\_ Last Name \_\_\_\_\_

Company \_\_\_\_\_

Address \_\_\_\_\_ Suite \_\_\_\_\_

City \_\_\_\_\_ State \_\_\_\_\_ Zip \_\_\_\_\_

Phone ( \_\_\_\_ ) \_\_\_\_\_ Email \_\_\_\_\_ @ \_\_\_\_\_

- I would like to place an order for the Moditech Crash Recovery System.  
Please contact me to complete the sales transaction.
- Please have a representative contact me with additional information.

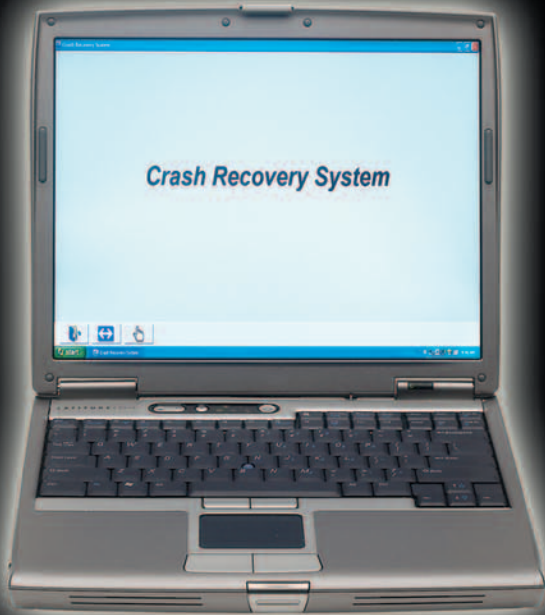
I am not interested at this time but would like for a representative to follow-up with me in the following timeframe:

- 3-6 months
- 6-9 months
- 9-12 months

## The FUTURE For Rescue Workers

This mobile information system allows rescue workers to extricate victims quickly and safely from crashed vehicles.





**Get the Inside Information**



Hurst has been manufacturing state-of-the-art rescue tools for over 30 years. During this rich history, their trademark Jaws of Life® systems have been instrumental in saving thousands of lives. From race track beginnings in 1972 to the rescue heroes of today, Jaws of Life systems travel with more than 35,000 rescue squads, fire and police departments throughout the world.

Today, Hurst is proud to sell a complete line of rescue tools and equipment under the Jaws of Life, Hurst Centaur, Vetter and Moditech brand names. For more information please visit [www.jawsoflife.com](http://www.jawsoflife.com).

**Hurst Jaws of Life**

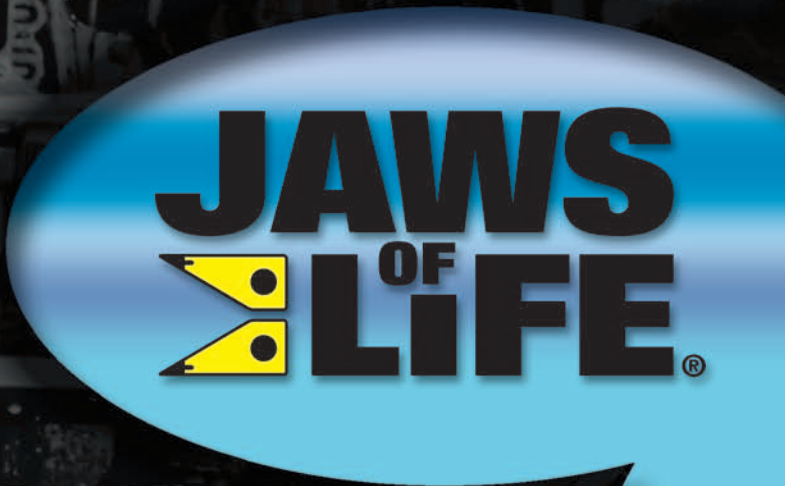
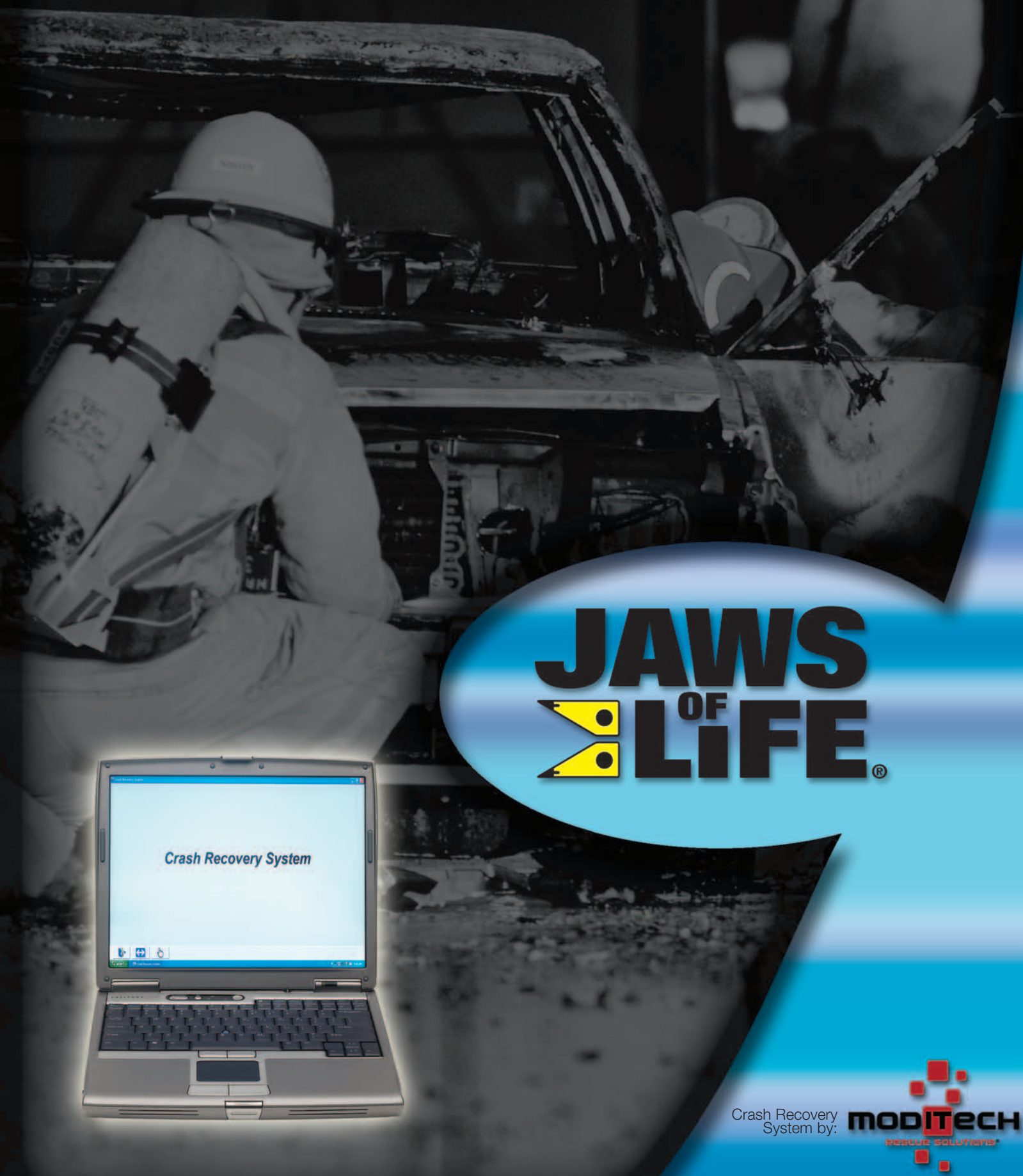
711 N. Post Road  
Shelby, NC 28150 USA

**1.800.537.2659**



# Crash Recovery System

Get the Inside Information



Crash Recovery System by: **MODITECH**  
RESCUE SOLUTIONS®



# The Conflict Between Safety And Accessibility

Due to all these safety systems the survival rate of victims of vehicle accidents has increased significantly. After an accident, however, these new technologies make it more difficult for the rescue worker to access and extricate victims from the wrecked vehicle. Many safety restraint components turn into a potential hazard for the rescue worker and the victim after an accident. Known examples are undeployed airbags, airbag gas generators and belt pretensioners. Therefore, determining the locations and deactivation procedure of these components is extremely important during the extrication process. This is not an easy task considering the locations and specifications of safety components can be significantly different for various makes and models of vehicles. Moreover, new models and systems appear on the market continuously, making it an impossible task for the rescue worker to keep up with technology!

## The Solution

Moditech Rescue Solutions BV recognized the need of a practical solution for this problem at a very early stage. Resulting in the introduction of the Crash Recovery System®: a mobile vehicle information database. This database runs on virtually every tablet, desktop or laptop PC. The mobile (wireless) communication is performed via any mobile data network.

With the Crash Recovery System®, the rescue worker can quickly and easily retrieve all necessary information right at the scene of the accident. After selecting the correct vehicle model (All American models vehicles are included from the year 2000 and forward) a graphic of the selected vehicle model appears on the screen. The rescue worker then has access to an interactive top and side view of the vehicle, displaying all safety components as well as other relevant items such as the battery, fuel tank, windshields, etc. in one window. After clicking a component of choice, the rescue worker instantly receives important information about the component such as its location, specifications and deactivation method. By delivering this critical information, the Crash Recovery System® ensures an efficient and safe extrication process and supports the rescue worker to choose the best methods.



# Features AND BENEFITS

## Quick and easy to use

- Technical information about the safety restraint system and other relevant components appears instantly on the screen.
- Clearly organized graphics show the exact locations of all components that are potentially dangerous.
- Detailed specifications and deactivation instructions of all components are displayed after just a single click on the component.

## Saves valuable time

- No time is wasted scanning the vehicle for the locations of potentially dangerous components.
- Deactivation instructions enable quick elimination of all possible hazards.
- The rescue worker is able to focus quickly on his main objective: extrication of victims.

## Increases safety

- Information about locations and deactivation procedures of potentially dangerous components makes it possible to work safely.
- Minimizes all risks for the rescue worker and victim because the rescue worker has an overview of all relevant components in the vehicle.

## Mobile and up to date

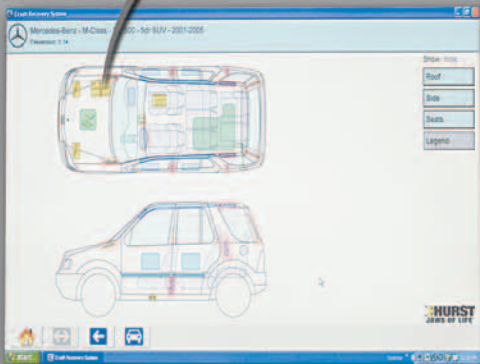
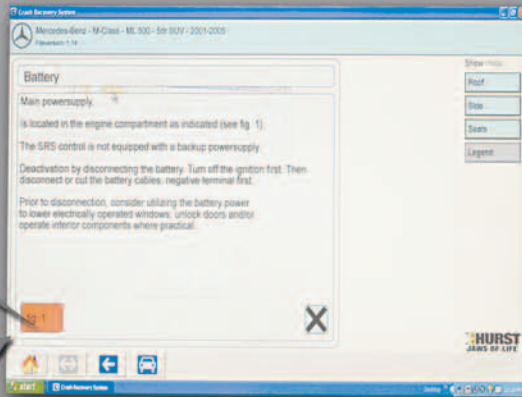
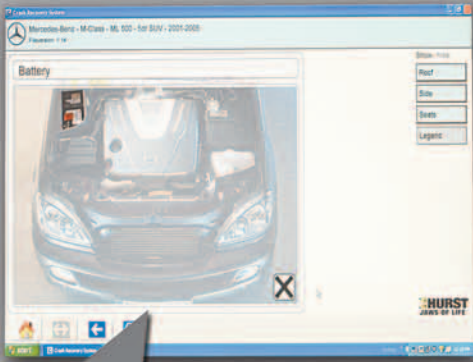
- Instant access to vehicle information on the scene of the accident.
- Automatic download of updates.



Moditech Rescue Systems features clear and concise navigation that allows rescuers to find needed information quickly and easily.

Interactive vehicle diagrams allow rescuers to click on specific vehicle components to instantly receive important information such as location, specifications and deactivation method.

*Note: Sample images below correspond to the 2005 Mercedes-Benz M Class*



# Editions AND Options

The Crash Recovery System® software is available in the Standard Edition. It features manual selection of the vehicle through make, model, type and year of the vehicle. This edition runs on every modern desktop, laptop, or tablet PC with a Pentium III or higher processor and Microsoft Windows 2000 Professional or XP Professional. The Crash Recovery System® has been developed with the future in mind. Software updates are downloaded via an internet connection. This ensures that the information in the database is always up to date with the latest developments in the automotive industry available for the rescue worker.

*“Above all, the Crash Recovery System® is a support system that provides extra safety, for both the rescue worker and the victims.”*

HENK DEN ROOIJEN,  
Commanding officer

Place  
Stamp  
Here

**Hurst Jaws of Life**  
Attn: Moditech  
711 N. Post Road  
Shelby, NC 28150 USA