

COLLAPSIBLE CONTAINERS



Moving and Storage

- LIGHTWEIGHT
- COLLAPSIBLE
- DURABLE
- SECURE
- WEATHERTIGHT
- CONVERTIBLE
- BRANDABLE

BENEFITS

- The latest in cutting-edge container technology for your clients
- 8' L x 5' W x 8' H, heavy-duty design with nearly 250 cu. ft. of usable storage space, and an 8,000-lb. capacity (when not stacked)
- Easily accommodates a standard sofa as well as other essential household items
- Collapses to one-third the original height when empty, providing significant freight savings during repositioning
- Ability to haul 30 collapsed units on a 53' trailer or 16 units in a 40' ISO container
- Household goods are secure during the moving and storage cycle—from pickup, to warehouse, to delivery
- Additional accessories such as e-track and tie-downs available
- Ventilated design reduces humidity buildup, protecting against mold and mildew
- Weathertight protection from inclement weather
- Translucent roof provides natural lighting for identification and removal of contents
- Two-sided access for efficient loading and unloading
- Ease of mobility—container can be brought directly to any home or office location
- Molded construction, with UV-resistant color and labeling options, allows customization of the container, eliminating the need for expensive vinyl covers
- The container is brandable with customized company logos and advertising, including optional permanent molded-in graphics
- Modular design allows replacement of parts without having to replace the entire container

USES

- Temporary portable warehouses
- Storage containers



Model 858

OUTSIDE DIMENSIONS

Length 96 in (244 cm)

Width 60 in (152 cm)

Height 97 in (246 cm)

INSIDE DIMENSIONS

Length 86 in (218 cm)

Width 52.5 in (133 cm)

Height 87 in (221 cm)

CAPACITIES/WEIGHTS

Empty Weight

746 lbs (339 kg)

Weight Capacity

2,000 lbs (907 kg) if stacked

8,000 lbs (3,629 kg) if unstacked

Maximum Gross Weight

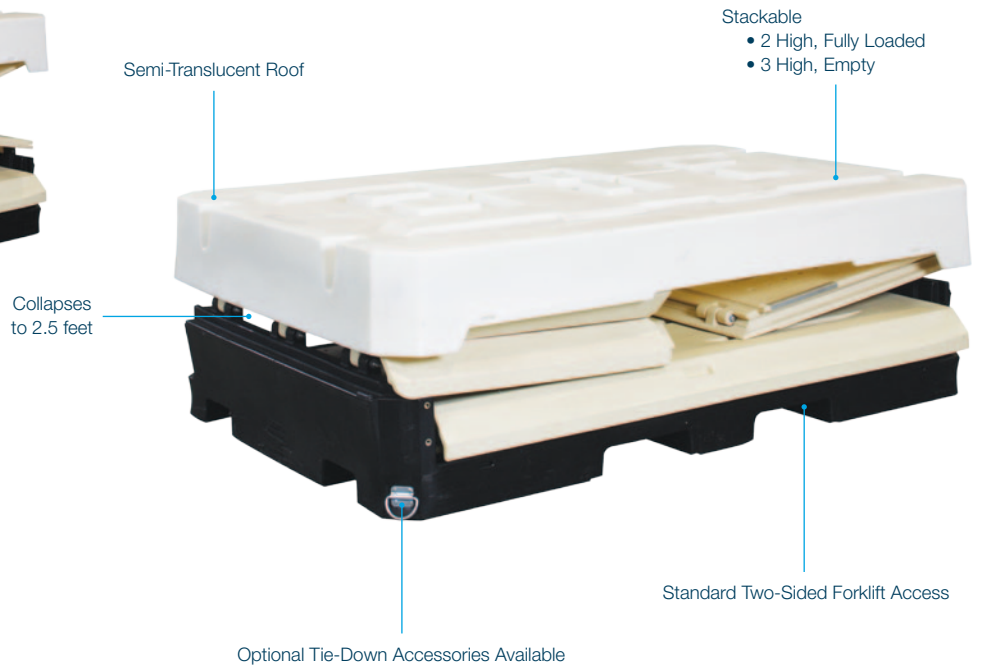
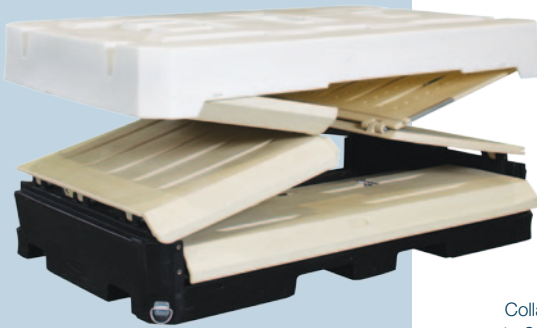
2,800 lbs (1,270 kg)

Cubic Capacity

248 cubic feet (7.1 cubic meters)

Design Load Density

8 lbs/ft³ (128 kg/m³)



Sales Office

COSMO Container Solutions
Inspirion Ventures Inc.
1555 Coraopolis Heights Road
Moon Township, PA 15108
1-88-USE-COSMO
(1-888-732-6766)
support@cosmocontainers.com
www.cosmocontainers.com

 is a trademark of Inspirion Ventures Inc.

The information contained herein is provided for general reference purposes only. By providing the information contained herein, Inspirion Ventures Inc. makes no guarantee or warranty and does not assume any liability, with respect to the accuracy or completeness of such information, or product results in any specific instance, and hereby expressly disclaims any implied warranties of merchantability or fitness for a particular purpose or any other warranties or representations whatsoever, expressed or implied. Nothing contained herein shall be construed as a license to use the products of Inspirion Ventures Inc. in any manner that would infringe any patent. Nothing herein shall be copied, reproduced, or otherwise used without the express written permission of Inspirion Ventures Inc.