



ALVARADO

protecting assets and controlling the flow of people



SECURED ENTRY CONTROL

Optical Turnstiles • Full Height Turnstiles • Waist High Turnstiles • Pedestrian Security Gates



EDC-BN Turnstiles (p.8)
& VSG Gate (p.9)



MST Turnstiles (p.6)



Supervisor 3000
Optical Turnstiles (p.5)



MSG Security Gate (p.9)

Alvarado

When it comes to security,

there can be no compromise in quality.

In the world of corporate security and access control, nobody knows turnstiles like Alvarado. Designing and manufacturing turnstiles for security applications for over half a century, our blueprint for success has remained simple and unchanged ... provide high quality products designed for years of trouble-free service.

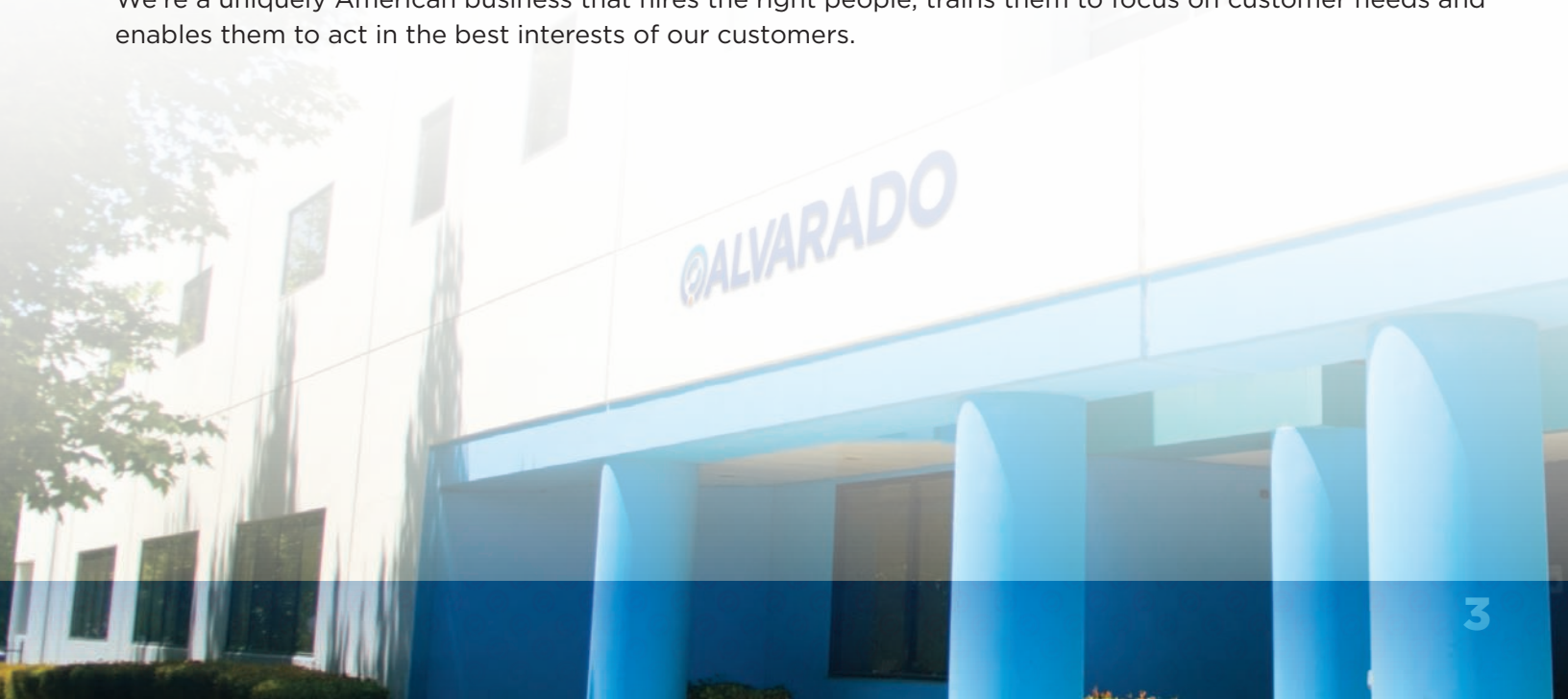
We have an in-depth understanding of the challenges faced when designing a safe and reliable physical security system, and we stand ready to assist our customers to find the best turnstile and access solution for their entrance security needs.

We take great pride in providing attractive, reliable products that secure government or private facilities in the United States and worldwide.

Architects and specifiers choose Alvarado because our wide selection of products look great and work flawlessly. Our products can be customized to blend with specific installation sites. We have readily accessible CAD files and specifications, and can provide custom drawings as needed. Turnstiles may not be something our customers deal with often, so our experienced staff routinely assists with product selection, plan review and site inspections.

Integrators and dealers choose Alvarado because we're a good partner. We provide great sales support. Our products are easy to install. We ship faster than anyone else and provide knowledgeable and responsive technical support.

End users love our long history of expertise and the continuity we provide. They understand we're not part of a slow moving, multinational conglomerate or some forgotten division of a big, bureaucratic organization. We're a uniquely American business that hires the right people, trains them to focus on customer needs and enables them to act in the best interests of our customers.



Optical Turnstiles

Optical turnstiles from Alvarado provide secure bi-directional entry control, while blending beautifully with high end environments. Some of the benefits of using optical turnstiles include: increased facility security; more organized entry/exit process; and a reduction in staff required to monitor guest/employee access.

All models integrate with nearly any access control system and provide quiet, highly-reliable operation and rapid throughput. A combination of integrated sensors and motorized barriers control access, block unauthorized entry attempts and detect “tailgating” on allowed entries. Sounds and lights alert when an unauthorized passage is attempted. Center cabinet designs allow for space-saving, multilane configurations. All models are available in widths that meet ADA requirements. Baseplates that avoid cutting into expensive or historic flooring are available.



Supervisor 5000 Optical Turnstile with Swinging Barriers

The Supervisor 5000 is the thinnest optical turnstile available. It has clear, bi-directional swinging motorized barrier panels and a stylish, architectural design that enhances any access control installation. Barriers can be ordered in various heights.



Supervisor 4000 Optical Turnstile with Sliding Barriers

The Supervisor 4000 has stylish sliding barriers and a color TFT monitor that displays user-definable images and video. Barriers can be ordered in various heights.



Supervisor 3500 **Optical Turnstile with Barrier Wings**

The Supervisor 3500 has stylish, clear “barrier wings” that move quickly out of the way to provide high throughput rates in either direction.



Supervisor 3000 **Optical Turnstile with Barrier Arms**

The Supervisor 3000 has motorized barrier arms that quickly retract out of the way to provide high throughput rates in either direction.

SU2000-MD



Supervisor 2000 **Barrier Free Optical Turnstiles**

The Supervisor 2000-MD is ideally suited for installations where access control is needed, but a physical barrier is not desired.

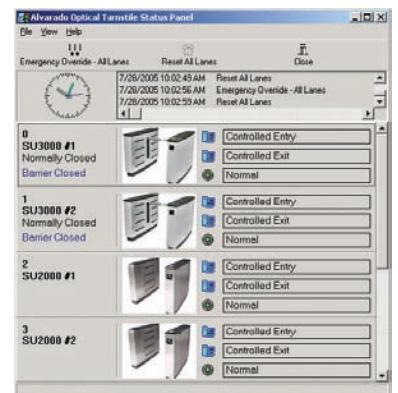
The Supervisor 2000-SM is our thinnest barrier-free turnstile. Its compact form is well suited for applications where space is at a premium.



SU2000-SM

GateKeeper **Turnstile Control & Monitoring Software**

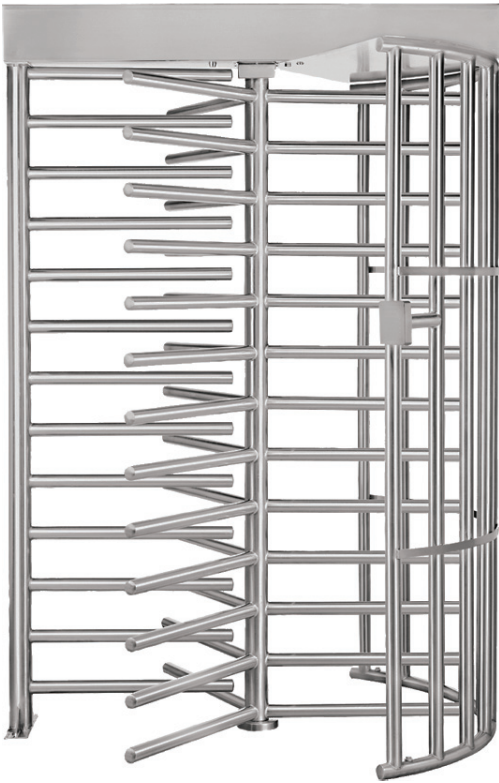
GateKeeper is an easy-to-use software program that allows any of Alvarado’s optical turnstiles to be configured, monitored and administered from a Windows-based PC. It allows control of virtually all operational functions, including entry/exit designation, opening/closing lanes or passage overrides. A built-in Event Scheduler allows day-to-day operational changes to be scheduled and implemented automatically.



Full Height Turnstiles

Full height turnstiles from Alvarado secure sensitive and restricted areas and provide entry control for all kinds of applications. Turnstiles do what a gate or door cannot, provide directional control of each passage and limit access to one person per activation. A turnstile does not sleep, take breaks, play favorites or require a paycheck, it simply provides a secure, unmanned point of entry that significantly increases facility security.

All full height turnstiles feature HydraLine™- Alvarado's revolutionary speed control that self-adjusts to the pushing force of the user to ensure a controlled and quiet rotation with automatic self-centering for improved security and safer passage. Electrically controlled models work with nearly any access control system.



MST

The MST is the most trusted, secure and reliable full height turnstile available. It is installed in thousands of locations throughout the world. Also available as a tandem.

Tandem Turnstiles

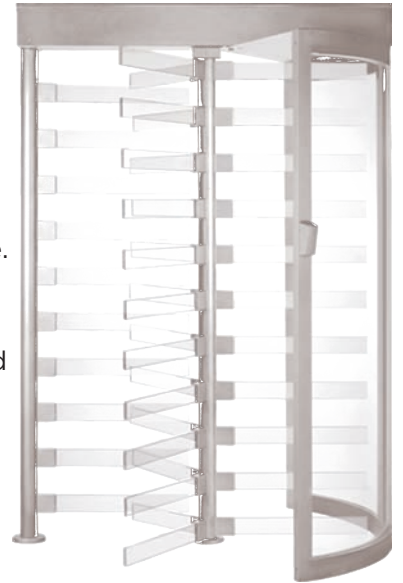
Tandem full height turnstiles provide directional control in areas that need two full height turnstiles, but require a smaller installation footprint. Our tandem turnstiles use 30% less space than two individual turnstiles. Models available as tandem include: MST, CLST (pictured at right) & CPST.





CLST

The CLST combines fully welded construction with a clear side panel. The fully welded Roto and OV eliminate bolts & fasteners for increased strength & security, while the clear side panel helps improve visual sightlines. Also available as a tandem.



CPST

The CPST is our most stylish full height turnstile. Highly secure, the CPST's clear arms and side panel provide a less industrial look than a traditional all-metal turnstile. It serves as a good alternative to expensive revolving doors. Also available as a tandem.

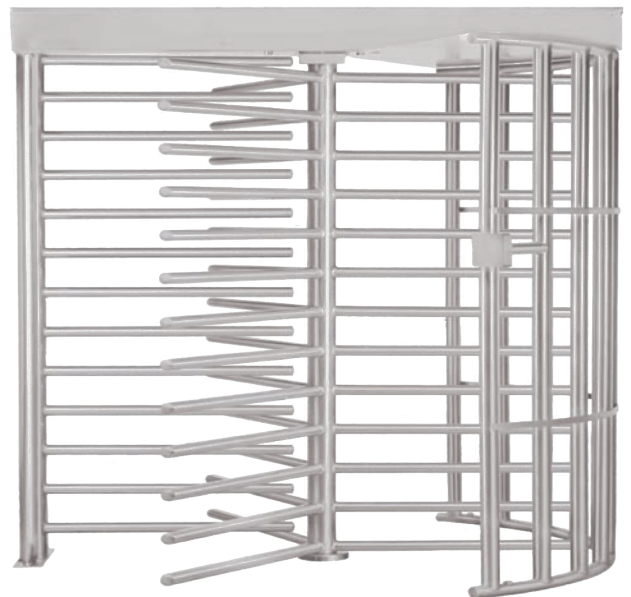


FMST

The FMST is a four arm, full height turnstile. Four arm turnstiles have a smaller patron passage area, making it more difficult to piggyback in access control applications.

MST47

The MST47 is the extended arm version of our trusted and reliable full height MST. Its 47" arms provide the flexibility of a wider passage area.



Waist High Turnstiles

Waist high turnstiles from Alvarado provide safe, reliable bi-directional access control. All turnstiles are designed for years of smooth, trouble-free operation and are available in manual and electrically controlled models.

Alvarado's waist high turnstiles feature hydraulically damped arm rotation with automatic self centering. The attractive bullet style head and arms provide a comfortable patron passage. All models ship fully assembled for quick and easy installation. Each turnstile is available in a satin stainless steel or powder coat finish. Electrically controlled models work with nearly any access control system.



EDC Bullnose

The elegant rounded cabinet design of the EDC-BN makes it our most stylish waist high turnstile. No external bolts are visible on the turnstile.



EDC

The EDC is Alvarado's most popular waist high turnstile, featuring a modern design that blends well with any facility. No external bolts are visible on the turnstile.



SLT

The SLT turnstile is economical, effective and ideal for direction control and pedestrian counting applications.

Pedestrian Security Gates

Alvarado security gates are engineered for safe and reliable operation. Gates are used for disabled or special patron access, parcel delivery or large group access, and are often used in conjunction with turnstiles.

Electrically controlled gates work with basic entry devices (buzzers/push buttons) and nearly any access control system. Gates ship fully assembled.



MSG

Available in a variety of models, this full-height gate ships pre-hung, ready for installation. All MSG gates feature heavy-duty hydraulic closures that can withstand years of use. Electric locking models, push or panic bar options (inset), key/thumb locks and card reader attachment plates are available. Select from galvanized or powder coated finishes.



VSG

This self-locking, single-direction stainless steel gate is an ideal complement to our waist high and optical turnstiles. The VSG is available in manual and electric locking models.

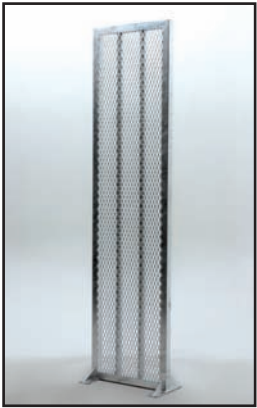


SSG

This manual, single-direction gate has a durable gravity closure mechanism which automatically closes the gate. The SSG is an inexpensive and effective way to control pedestrian flow without use of an access control system.

Complementary Products & Popular Options

Alvarado can customize select products and provides many optional features. Below are some of the more popular custom solutions we can provide. Contact your sales representative to discuss your particular installation needs.



Full Height Barriers

Our full height barriers blend seamlessly with our full height turnstiles and gates. They can be used in lieu of fencing material to fill gaps or close off openings. Available in a variety of widths to fit your installation needs.

Waist High Barriers

Custom built waist high barriers blend perfectly with our optical and waist high turnstiles. They can fill gaps in your installation, direct pedestrians and provide an integrated appearance.



Powder Coating

Any of our secured entry products can be powder coated. We offer a variety of standard and custom colors. Pick your color at www.alvaradomfg.com/powdercoat_chart.

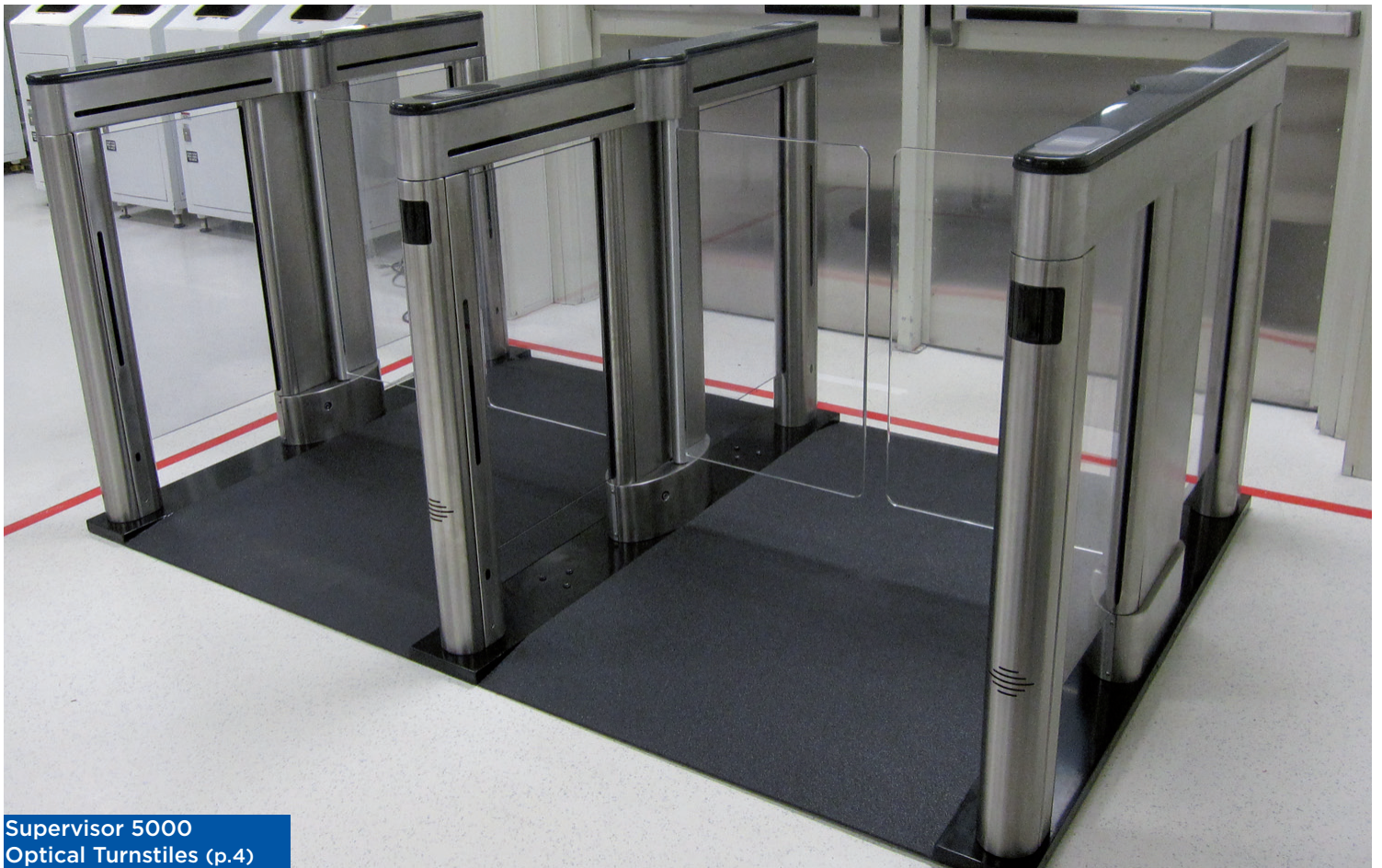
Alternate Materials

Our optical turnstiles can be customized with alternate cabinet and lid materials. We've built cabinets from exotic woods and supplied granite and marble lids to match lobby floors and furniture.



Etched Panels

We can etch your company logo, text or artwork on any of our acrylic or glass panels.



**Supervisor 5000
Optical Turnstiles (p.4)**



**Supervisor 3500
Optical Turnstile (p.5)**



**MST-47 Turnstile (p.7) &
MSG Security Gate (p.9)**

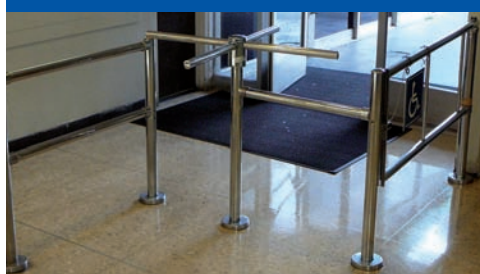
Other Alvarado Products & Solutions

ENTERTAINMENT VENUE SOLUTIONS



Alvarado provides gate admission and patron counting systems, intelligent scanning devices, entry turnstiles, gates and railing. With thousands of installations around the globe, Alvarado has the experience to get your venue running smoothly.

QUEUING & ENTRY CONTROL



Alvarado offers a wide selection of retractable belt stanchions, posts, rails, entry turnstiles and pedestrian gates. Let our knowledgeable staff recommend solutions for your next project.

ASSET PROTECTION



Our fixture protection equipment protects overhead doors, store fixtures, walls and storage racks. Our products extend the life of fixtures and save thousands in replacement and retrofit costs.

ALVARADOMFG.COM
information@alvaradomfg.com

12660 Colony Street • Chino, CA 91710 USA
+1.909.591.8431 • Fax: +1.909.628.1403 • Toll Free: 800.423.4143