



# B53 BLUELIFT

## The BLUELIFT Series

Back in blue alongside the ReachMaster brand! Meet our new line of aerial lifts from the well-renowned Italian manufacturer Bluelift s.r.l., now exclusively distributed in the US, Canada and Mexico by SKAKO Lift, Inc. Innovation, quality, superior design and above all safety are trademarks of Bluelift s.r.l.. With working heights from 39 to 72 feet, in and outdoor use and access through a single or double door, the BLUELIFT series appeals to a broad range of applications: Rental industry (residential as well as commercial), window cleaners, building maintenance, tree care industry and HVAC operators to mention a few.

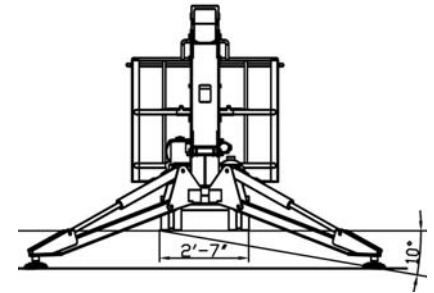
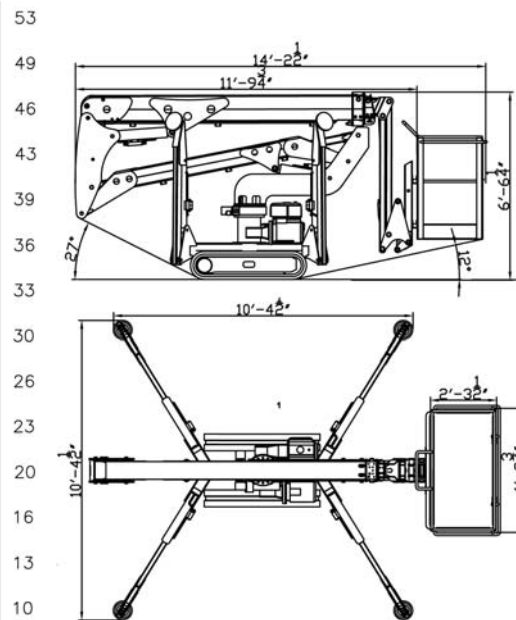
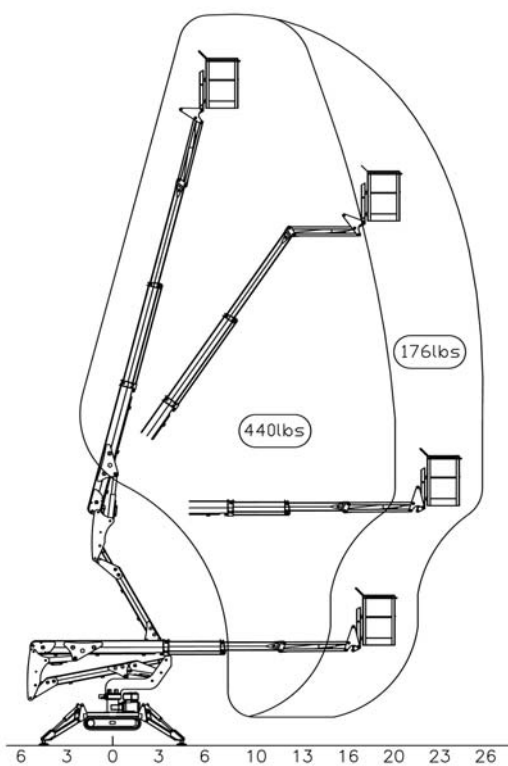
- Available in 4 models from 39ft - 72ft
- Pass through a single or double door opening
- Automatic outrigger setting
- Full workheight with 440lbs in the basket
- Remote and wireless control
- 110V to the basket
- Set up on uneven surfaces
- Detachable basket
- FMS (Function Memory System)
- Automatic turret center stop

## Model

## B53

Working height	53ft
Basket height	47ft
Max outreach	27ft (176lbs)
Basket load	440lbs
Basket dims	4ft3 $\frac{3}{4}$ in x 2ft3 $\frac{1}{2}$ in
Basket rotation	+/-90°
Turret rotation	360°
Height	6ft6 $\frac{1}{2}$ in
Length (w/o basket)	11ft9 $\frac{3}{4}$ in
Length (w/ basket)	14ft2 $\frac{1}{2}$ in
Width (w/o basket)	2ft7in
Footprint	10ft4 $\frac{1}{2}$ in
Weight (approx)	4,730lbs
Max pressure, tracks	8.3psi
Max pressure, footplate	65.4psi
Track size (per track)	44in x 6 $\frac{1}{2}$ in
Foot pad size (per pad)	48 $\frac{1}{2}$ sq in
110V drive motor	Standard
Honda, single cylinder	Standard
Hatz diesel engine	Option
Honda upgrade	Option

We reserve the right to alterations



# B53 BLUELIFT

## Standard Equipment

- Automatic stability & outreach control
- 180° (+/-90°) basket rotation
- Computer controlled (can-bus)
- Proportional controls
- Self propelled
- 110V drive motor
- Honda, single cylinder
- 360° non cont. turret rotation
- Manual pump for emergency lowering
- Width of only 2ft7in
- 2 person basket
- Full work height with 440lbs in basket
- Full outreach with 176lbs in basket
- Space for tools etc in basket
- 110V to the basket
- Remote Control
- FMS (Function Memory System)
- Automatic turret center stop

## Optional Equipment

- Non marking tracks
- Air/water to the basket
- Honda iGX440 15HP engine
- Hatz diesel engine
- Wireless control
- Adjustable tracks

## Additional Specifications

Boom angle	0°/ +75°
Oil tank capacity	8gal
Max windspeed	28mph
Operating speed	0.9mph
Travel speed	0.9mph
Drive gradability	15°/28%
Set-up gradability	10°/18%



**SKAKO**  
LIFT

Skako Lift, Inc  
1416D Stonehollow Dr.  
Kingwood, TX 77339  
TF: 1-866-358-7088  
Tel: 281-358-7088  
Fax: 281-359-3500  
www.skakoliftusa.com