

# HYDRONIC HEATING PRODUCTS

## Dual Check With Atmospheric Port

### MODEL DCAP

### DUAL CHECK WITH ATMOSPHERIC PORT BACKFLOW PREVENTER



Protects residential and commercial water supply lines from back-siphonage or back-pressure of non-potable substances. Suitable for hot or cold water service. Low head loss.

#### FEATURES

- Approved by **ASSE & CSA**
- Maximum working pressure: 175 psig
- Independently acting check valves
- Sizes 1/2" and 3/4"
- Corrosion resistant
- Economical
- Durable
- Easy to install, maintain and repair
- Operating temperature: 33°F to 210°F
- Designed, manufactured, assembled and tested in South Carolina, USA



#### PART NUMBER:

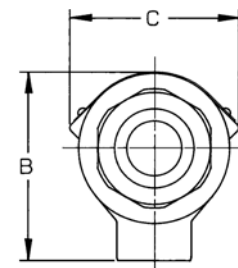
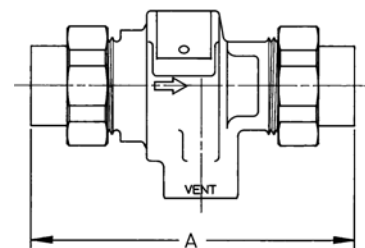
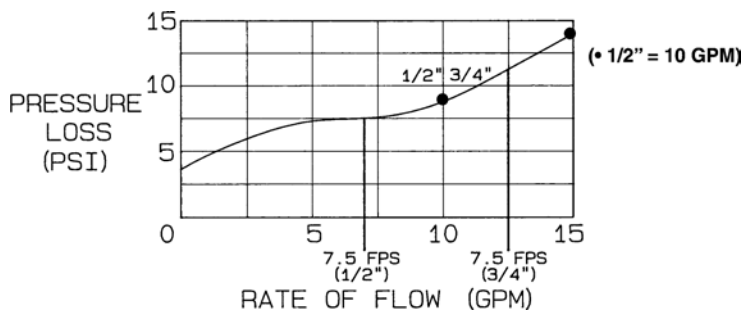
40-4	X	X	-	X	X	M
INLET CONNECTION		INLET SIZE	OUTLET SIZE (IN.)		OUTLET CONNECTION	
A – FNPT		3 – 1/2	3 – 1/2		A – FNPT	
H – Solder joint		4 – 3/4	4 – 3/4		B – MNPT	
2 – Female BSPP					F – Female BSPP	
					H – Solder joint	

#### MODEL NUMBER:

DCAP	X	X	X
INLET CONNECTION	OUTLET CONNECTION	INLET AND OUTLET SIZE (IN.)	
F – FNPT	F – FNPT	12 = 1/2"	
S – Solder joint	M – MNPT	34 = 3/4"	
B – Female BSPP	S – Female BSPP		
	B – Solder joint		

#### FLOW CURVES

(\*) Rated flow as determined by USC's FCCC&HR and ASSE design performance standards.



Dimensions (in.) Size (in.)	Weights (lbs.) 1/2, 3/4
A	5.00
B	2.94
C	2.62
Unit Weight	1.90