

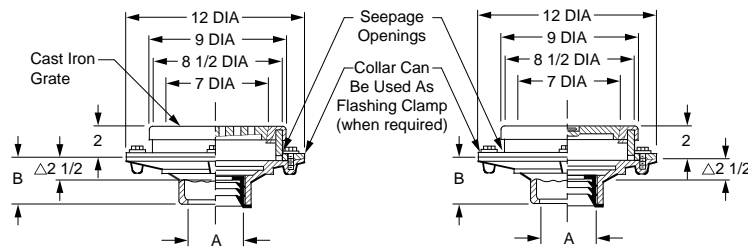


SPECIALTIES, STAINLESS AND CARBON STEEL

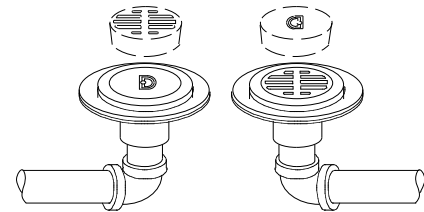
FIG. 9205 DECONTAMINATION FLOOR DRAINS



FUNCTION: Used in areas where hazardous or otherwise contaminated waste is present. Consists of two individual drains. Slotted grate drain permits drainage of contaminated waste to a separate storage tank, while the adjacent drain connected to the sewer is covered by a solid ground joint plug, thus preventing contaminated waste from entering the sewer system. Switching the solid cover and grate will allow washed down decontaminated waste to be directed to the sewer without entering the contaminated waste storage tank.



△ This dimension to internal stop of Speedi-Set gasket.



TYPICAL INSTALLATION
Drains are located close to each other for ease of switching grate and plug

OUTLET VARIATIONS (Specify type of outlet and pipe size in inches.)

A OUTLET SIZE	TOP SIZE DIA	FREE AREA SQ IN	DUCO CI PB TOP	DUCO CI NB TOP	APPROX. WT. LBS.	
02, 03, 04"	9"	10.30	915.00	2,275.00	2,598.00	50

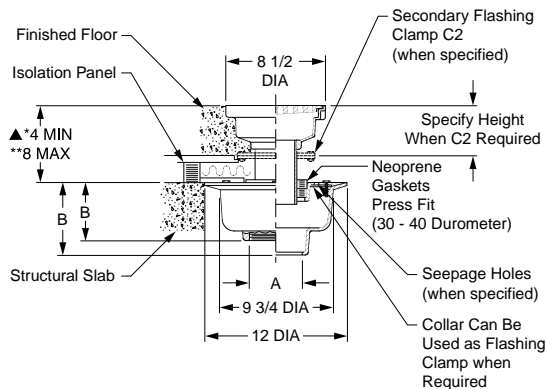
REGULARLY FURNISHED: Two (2) Duco Cast Iron Bodies with Flashing Collar and Bronze Rim. Cast Iron Grate and Ground Joint Plug.

Outlet Type	Outlet Designation	Outlet Type/Pipe Size	"B" Body HT. DIM.	ADD
Inside Caulk	C02, C03, C04		3 3/4"	N/C
Speedi-Set Outlet SW	L02, L03, L04		3 3/4"	N/C
Speedi-Set Outlet XH	LXH02, LXH03, LXH04		3 3/4"	N/C
Threaded	T02, T03, T04		2"	95.00
No-Hub	Y02, Y03, Y04		3 3/4"	N/C

OPTIONS:	ADD
-ARC Acid Resistant Coated	455.00
-FBSCI Flat Bottom Str, CI, (ea)	36.00
-G Galvanized CI	514.00
-M Ductile Iron Grate and Plug	330.00
-RB Bronze Grate and Plug	1,360.00

FIG. 9340 DRAIN FOR FLOATING (ISOLATED) FLOOR SYSTEMS

FUNCTION: Used in areas which may have to be isolated from the other parts of the building; such as mechanical equipment rooms, studios, music rooms, laboratories and data processing areas.



OUTLET VARIATIONS (Specify type of outlet and pipe size in inches.)

A OUTLET SIZE	TOP SIZE DIA	FREE AREA SQ IN	DUCO CI PB TOP	DUCO CI NB TOP	APPROX. WT. LBS.	
02, 03, 04"	8 1/2"	14.25	1,029.00	1,295.00	1,358.00	90

REGULARLY FURNISHED: Duco Cast Iron Lower Body and Flashing Collar, Adjustable Nipple, Upper Body, Grate and Neoprene Isolation Gaskets.

Outlet Type	Outlet Designation	Outlet Type/Pipe Size	"B" Body HT. DIM.	ADD
Inside Caulk	C02, C03, C04		6"	N/C
Speedi-Set Outlet SW	L02, L03, L04"		6"	N/C
Speedi-Set Outlet XH	LXH02, LXH03, LXH 04"		6"	N/C
Threaded	T02, T03, T04		4 3/4"	47.00
No-Hub	Y02, Y03, Y04		6"	N/C

OPTIONS:	ADD
-C Underdeck Clamp	146.00
-G Galvanized CI	730.00
-R Sump Receiver Plate	164.00
-U Vandal Proof Screws	89.00
-W With Seepage Holes	90.00

*Add 1/4" for Nickel Bronze or Polished Bronze Top.
**If greater dimension than shown from lower flange to top is required specify a longer nipple.
▲ Nipple may require cutting to achieve minimum dimension.

